



July 2008

| | |
|------------------|------------|
| Customer Name | Account No |
| Dealer | Order No |
| Address | Order Qty |
| Tel No | Order Date |
| Delivery address | |

Invacare[®] Action³ Junior - S
 Dealer
 Max User Weight 80 Kg (12½ Stone)

Standard Features
 Choice Of 5 Frame Colours
 Select From 4 Widths And 2 Seat Depths
 7° Sling Back Style
 Removable Desk Armrests
 Solid Or Pneumatic Rear Tyres
 Fixed Or Folding Back
 Push To Lock Brakes
 Fire Retardant Lap Belt
Standard Base Price £462

Please make your selection with a cross in the box ◆ Standard feature ○ Free of Charge
 NC = Incompatibility with option XXX99

| Code | Customer weight = | Description (NB: All Sizes Are Approximate) | Dealer |
|-----------------------------|-------------------|---|--------|
| CNC0001 | X | Action ³ Junior Evolutive (NC:0340) | £462 |
| CNCSPEC | | Special | TBC |
| 0025 | X | Action3 Junior | |
| PROPULSION TYPE | | | |
| 0100 | | Self Propulsion (NC :1170) | ○ |
| 0110 | | Transit Propulsion (NC: 0270,0280,1180,1190,1195,1201,1390) | ○ |
| SEATING TYPE | | | |
| SEAT WIDTH | | | |
| 0140 | | 20.5 cm | ○ |
| 0141 | | 23cm | ○ |
| 0142 | | 25.5cm | ◆ |
| 0143 | | 28cm | ○ |
| SEAT DEPTH | | | |
| 0160 | | Adjustable Seat Depth 20cm To 25cm (Delivered at 23cm) (NC:1060,1070,1075,1190,1195) | ○ |
| 0161 | | Adjustable Seat Depth 25cm To 30cm (Delivered at 28cm) | ○ |
| 0162 | | Adjustable Seat Depth 30cm To 35cm (Delivered at 33cm) | ○ |
| SEAT HEIGHT | | | |
| 0260 | | 46 cm | ○ |
| 0270 | | 43.5 cm | ○ |
| 0280 | | 41 cm (NC : 1280,1375,1430,1440) | ◆ |
| SEAT UPHOLSTERY TYPE | | | |
| 0335 | | Nylon With Velcro Strips (Width and Depth Adjustable) | ◆ |
| BACKREST TYPE | | | |
| 0370 | | Fixed 0° (3 Heights) 37/40/43cm (Set at 40cm) | ○ |
| 0380 | | Fixed 7° Backrest (3 Heights) 37/40/43cm (Set at 40cm) | ○ |
| 0390 | | Reclining Ratchet Backrest 0°/30° 5 Heights 35/37/39/41/43 (Set at 39cm) (NC : 1190,1195) | £90 |
| 0395 | | Gas Sprung Recliner Back 0/30° 40cm height (NC : 1190,1195) | £135 |
| 0400 | | Folding Backrest (3 Heights) 37/40/43cm set at 40cm (NC:0480) | ◆ |
| 0420 | | Folding Backrest 40cm height with height adjustable push handles adjustable by 10 cm (NC: 0855) | £55 |
| 0425 | | Fixed 7° Backrest 40 cm height with height adjustable push handles adjustable by 15 cm (NC: 0855) | £55 |

Order No :

Customer Ref :

| BACKREST UPHOLSTERY TYPE | | | |
|--------------------------|--|---|------|
| 0475 | | Width & Height Adjustable Nylon Sling | ◆ |
| HANGERS/FOOTPLATES | | | |
| HANGERS RH TYPE | | | |
| 0505 | | 90° Straight Right Hand Removable Hanger UL 12.5cm To 26cm (NC:0565) | £20 |
| 0515 | | Outrigged Frame 30° Abduction UL 8.5cm cm To 20.5cm (+ 20cm with extension tube) (NC : 0555,0560,0561,0562,0563,0570,0600,0610,0880,0886,0890,0900) | ○ |
| HANGERS LH TYPE | | | |
| 0555 | | 90° Straight Left Hand Removable Hanger UL 12.5cm To 26cm | £20 |
| 0565 | | Outrigged Frame 30° Abduction UL 8.5cm cm To 20.5cm (+ 20cm with extension tube) (NC :0880,0886) | ○ |
| FOOTPLATE TYPE | | | |
| 0605 | | Flip Up Depth And Angle Adjustable (Adapt) | ◆ |
| ARMRESTS | | | |
| ARMREST RH TYPE | | | |
| 0640 | | Removable Desk Arm Adjustable RH 18 to 28 cm (NC: 0750,0745) | ◆ |
| 0645 | | Removable Desk Arm RH (Junior) Adjustable 15 to 25 cm (NC: 0750,0755) Face £ | ○ |
| 0650 | | Mudguard RH (NC: 0740,0745,0755,1471,1472) | ○ |
| 0655 | | Skirtguard RH (Junior) (NC: 0740,0745,1471,1472) Face Skirtguard | ○ |
| ARMREST LH TYPE | | | |
| 0740 | | Removable Desk Arm Adjustable LH 18 to 28 cm | ◆ |
| 0745 | | Removable Desk Arm LH (Junior) Adjustable 15 to 25 cm Face Skirtguard | ○ |
| 0750 | | Mudguard LH (NC:1471,1472) | ○ |
| 0755 | | Skirtguard LH (Junior) (NC: 1471,1472) Face Skirtguard | ○ |
| SEATING OPTIONS TYPE | | | |
| 0825 | | Customised Sticker Sheet | £22 |
| 0851 | | MSS Lite Cushion | £82 |
| 0860 | | Multi Adjustable Headrest (NC:1425) | £80 |
| 0865 | | Round Headrest Multi Adjustable (NC:1425) | £112 |
| 0870 | | Adjustable Heel Strap | ◆ |
| 0880 | | Adjustable Calf Straps | £8 |
| 0886 | | Footplate adjustment Kit, (front or rear set adjustment) | £15 |

Order No :

Customer Ref :

LPF0005L
Action3 SP
2 of 4

Subject to Invacare's standard Terms and Conditions.
Invacare reserve the right to alter product specification without prior notice.

| COLOURS | | | |
|------------------------|--|--|-------------|
| 0950 | | Tangerine Orange | ○ |
| 0960 | | Dark Red | ○ |
| 0970 | | Sapphire Blue | ○ |
| 0980 | | Anthracite Black | ○ |
| 0990 | | Bubble Gum Pink | ○ |
| FRONT WHEELS | | | |
| 1000 | | 12.5cm x 2.5cm (5"x 1") | ◆ |
| 1001 | | 12.5cm x 2.5cm (5"x 1") Flashing Lights Solid Tyre | £22 |
| 1005 | | 12.5cm x 4cm (5"x 1¼") | ○ |
| REAR WHEELS | | | |
| 1060 | | 56cm x 3.5cm (22" x 1.3/8") Pneumatic Tyre Spoke Rim | ○ |
| 1070 | | 56cm x 3.5cm (22" x 1.3/8") Solid Tyre Spoked Rim | ○ |
| 1075 | | 56cm x 3.5cm (22" x 1.3/8") Black Solid Tyre (NC : 1280) | ○ |
| 1080 | | 51cm x 3.5cm (20" x 1.3/8") Pneumatic Tyre (Spoked Rim) (NC:1280) | ○ |
| 1090 | | 51cm x 3.5cm (20" x 1.3/8") Solid Tyre (Spoked Rim) (NC:1280) | ○ |
| 1100 | | 30.5cm 5cm (12" x 2") Pneumatic Tyre (Plastic Rim) (NC : 1140, 1180, 1250, 1251, 1252, 1390,1391,1392) | ○ |
| 1110 | | 30.5cm 5cm (12" x 2") Solid Tyre (Plastic Rim) (NC : 1140, 1180, 1250, 1251, 1252, 1280, 1390,1391,1392) | ○ |
| HANDRIM TYPE | | | |
| 1140 | | Aluminium Pre-anodized Handrim | ◆ |
| REAR WHEELS AXLE TYPE | | | |
| 1170 | | Fixed Axle (NC : 1201) | ◆ |
| 1180 | | Quick Release Axle | ○ |
| REAR WHEELS POSITION | | | |
| 1190 | | Standard | ◆ |
| 1195 | | Comfort Position | ○ |
| 1200 | | Amputee Rear Wheel Position | ○ |
| 1201 | | Dual amputee rear wheels position (NC : 1280,1375) | £50 |
| PUMP | | | |
| 1230 | | Pump And Support | £7 |
| CHASSIS OPTIONS TYPE | | | |
| 1250 | | Spoke Guard Smiley | £40 |
| 1251 | | Spoke Guard Spider | £40 |
| 1252 | | Spoke Guard Flower | £40 |
| BRAKES TYPE | | | |
| 1270 | | Push To Lock Brakes | ◆ |
| 1280 | | Attendant Hub Brakes Including Push To Lock Brakes | £110 |
| SAFETY OPTIONS TYPE | | | |
| 1350 | | Velcro Belt | ○ |
| 1370 | | Rear Anti Tippers (PAIR) (NC: 1430, 1440) | £25 |
| 1380 | | Reflectors Kit (Wheels And Chassis) | £5 |
| 1390 | | Brake Extension (PAIR) | £10 |
| 1391 | | Brake Extension RH | £5 |
| 1392 | | Brake Extension LH | £5 |
| ATTENDANT OPTIONS TYPE | | | |
| 1425 | | Push Bar | £28 |
| 1430 | | Tipping Aid Right Hand | £10 |
| 1440 | | Tipping Aid Left Hand | £10 |
| ACCESSORIES TYPE | | | |
| 1471 | | Right Hand Swingaway Acrylic Tray | £145 |
| 1472 | | Left Hand Swingaway Acrylic Tray | £145 |
| PRICE | | | |
| | | | Total Price |

Order No :

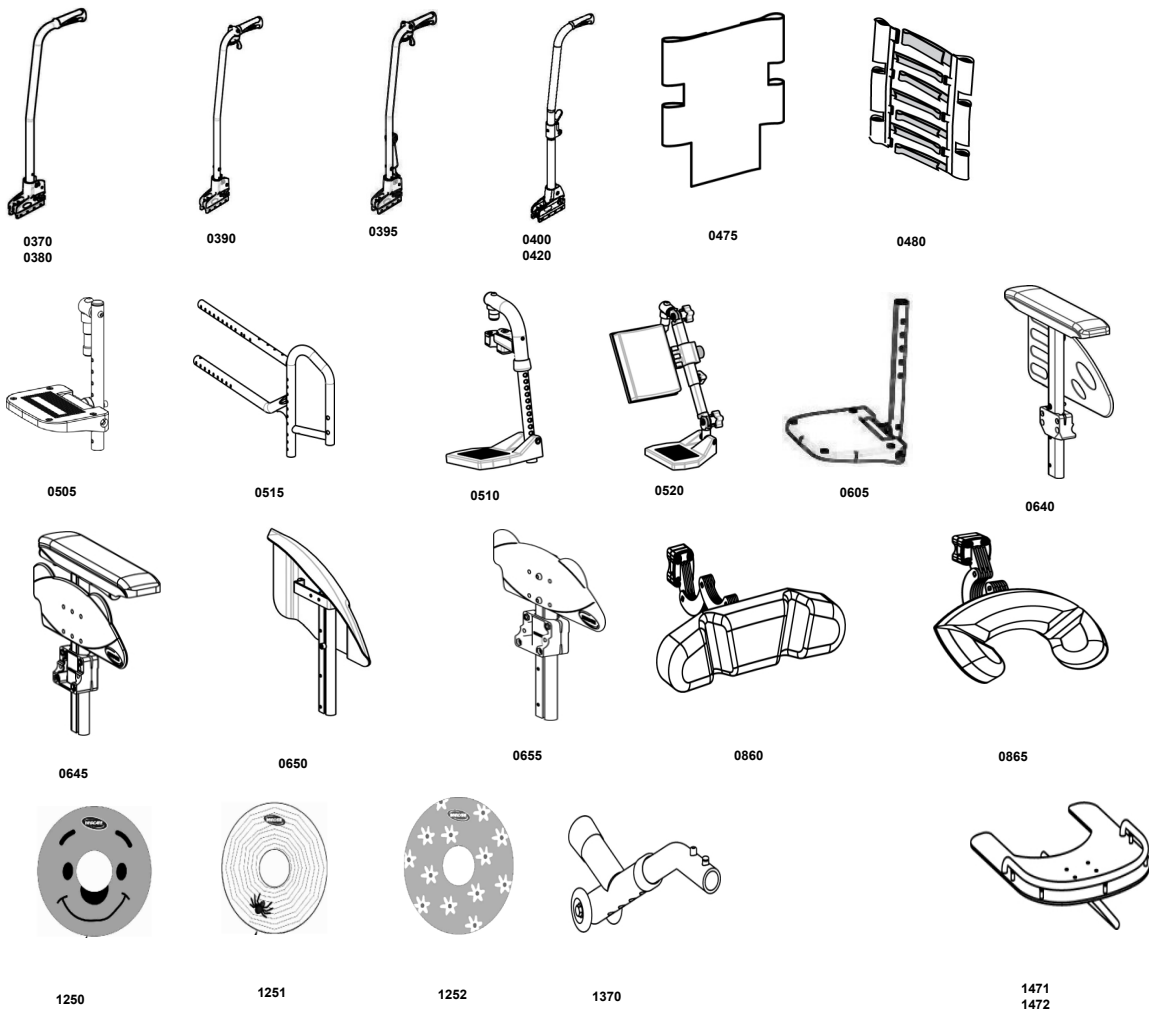
Customer Ref :

LPF0005L
Action3 SP
3 of 4

Subject to Invacare's standard Terms and Conditions.
Invacare reserve the right to alter product specification without prior notice.

Non Conforming Items Guide

| | |
|------|--|
| 0270 | 43.5 cm |
| 0280 | 41 cm |
| 0480 | Tension adjustable nylon |
| 0745 | Removable Desk Arm LH (Junior) Adju |
| 0750 | Mudguard LH (NC:1471,1472) |
| 0755 | Skirtguard LH (Junior) (NC: 1471,1472) |
| 0825 | Customised Sticker Sheet |
| 0880 | Adjustable Calf Straps |
| 0880 | Footplate adjustment Kit, (front or rear set adjustment) |
| 1170 | Fixed Axle |
| 1180 | Quick Release Axle |
| 1190 | Standard |
| 1195 | Comfrot Position |
| 1250 | Spoke Guard Smiley |
| 1251 | Spoke Guard Spider |
| 1252 | Spoke Guard Flower |
| 1280 | Attendant Hub Brakes Including Push To Lock Brakes |
| 1390 | Brake Extension (PAIR) |
| 1425 | Push Bar |
| 1430 | Tipping Aid Right Hand |
| 1440 | Tipping Aid Left Hand |



Order No :

Customer Ref :

LPF0005L
Action3 SP
4 of 4

Subject to Invacare's standard Terms and Conditions.
Invacare reserve the right to alter product specification without prior notice.