



Pro-tech



WHEELCHAIR BACK SYSTEMS



The Pro-tech Wheelchair Back System makes available a range of products individually designed to promote good posture and deliver exceptional user comfort.

The products featured within this brochure have been developed and enhanced to give improved performance and greater application.

Pro-tech Wheelchair Back Systems - Features

- Wide range of posterior, anterior, lateral and angle adjustment can be facilitated, allowing accommodation for growth and individual user needs.
- Improved design to facilitate easy adjustment.
- Backrest system can be applied to a wide range of wheelchair frames. (12"/30cm - 24"/61cm).
- Backrest system can be used separately, or in conjunction with the drop seat board and other accessories to create a full seating system specific to a clients' needs.
- Extensive range of harnesses and pelvic belts are now available, with easy-to attach fixings.
- Mounting systems and accessories are now constructed in high grade aluminium - strong and lightweight.
- Crash tested to ISO16840- 4.

The Pro-tech Wheelchair Back System standard package includes the back shell, castellated foam cushion with cover, L-brackets (4), and the selected mounting system.

A detachable lumbar pad is also provided to offer increased comfort and positioning in the lumbar / pelvic region.



The Pro-tech Back System



The Pro-tech Back System

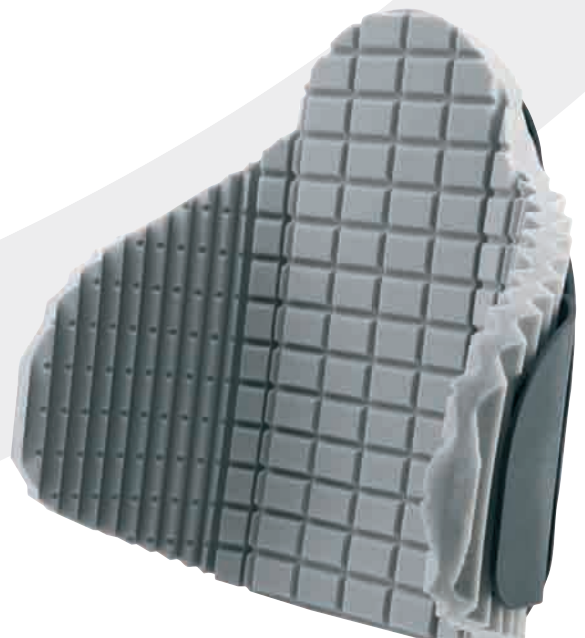
- Strong, lightweight back support shell, fabricated from durable, premium-grade Kydex.
- Increased trunk and pelvic stability, allowing for improved positioning and posture.
- Back Shell incorporates partially pre-drilled holes, easily punched out for precise mounting of L-brackets, headrests and lateral brackets.
- Choice of mounting systems available - the Easy Clamp or VERSALock mounting systems both ensure quick, easy and secure installation of the backrest onto a wheelchair.
- Backrest features a high quality castellated foam support surface.
- Available in Standard and Tall backshells. (see back of brochure for size details).



Deep Contour Kit

A Deep Contour back support is also available. This offers increased lateral support and is available as an upgrade on the Standard and Tall Pro-tech shells.

- Facilitates the option of converting the backrest to a deep contour format through the fitting of adjustable lateral extensions and a replacement castellated foam insert.
- Deep Contour backrest provides additional thoracic support, offering increased stability.
- Tall Deep Contour allows extra space for additional lateral supports if required. (Refer to page 7).
- All Standard and Tall shells can be upgraded to a Deep Contour shell.





Headrests

Pro-tech headrests provide additional comfort and support.

Slimline Headrest Pad

- Thin oval shaped pad covered with $\frac{1}{2}$ " / 1.3cm medium foam for discrete posterior support.
- Foam is rolled over the edges of the base for enhanced skin protection.

Size	Width	Height	Depth	Order Code
Small	8" / 20.3cm	5" / 12.7cm	$\frac{3}{4}$ " / 2cm	1493461
Medium	11" / 28cm	5" / 12.7cm	$\frac{3}{4}$ " / 2cm	1493462
Large	14" / 35.6cm	5 $\frac{1}{2}$ " / 14cm	$\frac{3}{4}$ " / 2cm	1493463

Soft Headrest Pad

- Soft headrest pad offering additional comfort and support.

Size	Width	Height	Depth	Order Code
Small	8" / 20.3cm	4 $\frac{1}{2}$ " / 11.4cm	2 $\frac{1}{2}$ " / 6.4cm	1493464
Medium	10" / 25.4cm	4 $\frac{1}{2}$ " / 11.4cm	2 $\frac{1}{2}$ " / 6.4cm	1493473
Large	12" / 30.5cm	4 $\frac{1}{2}$ " / 11.4cm	2 $\frac{1}{2}$ " / 6.4cm	1493474

Occipital Headrest Pad

- Discretely sized occipital headrest, designed to provide specific occipital support.
- Base is curved to provide comfortable support to the occipital area of the skull, whilst also offering some lateral head support
- Tapered and shaped to offer some neck support.

Size	Width	Height	Depth	Order Code
Small	8 $\frac{1}{2}$ " / 21.6cm	3 $\frac{1}{2}$ " / 9cm	3 $\frac{1}{2}$ " / 3.2cm	1493458
Medium	9" / 23cm	4" / 10.2cm	3 $\frac{1}{2}$ " / 3.2cm	1493459
Large	13" / 33cm	4" / 10.2cm	3 $\frac{1}{2}$ " / 3.2cm	1493460

Tripad Headrest

- Provides firm head support.
- Pads are curved with an occipital contour at the bottom of the middle pad.
- Features an adjustable lateral support, which allows more specific head positioning.
- Ideal for users whose head tends to fall sideways.

Size		Order Code
Regular	Side Pads: 3"H x 5" W x 1 $\frac{1}{2}$ " D 7.6 H x 12.7 W x 3.8 D cm Middle Pad : 4"H x 4 $\frac{1}{2}$ " W x 1 $\frac{1}{2}$ " D 10.2 H x 11.4 W x 3.8 D cm	1493475
Large	Side Pads : 3 $\frac{1}{2}$ " H x 6" W x 1 $\frac{2}{3}$ " D 8.9 H x 15.2 W x 4.2 D cm Middle Pad : 6"H x 5 $\frac{1}{2}$ " W x 1 $\frac{2}{3}$ " D 15.2 H x 14 W x 4.2 D cm	1493574



Please note: All Pro-tech headrests are designed to provide posterior head support and should be used in conjunction with the Pro-tech backrest to ensure an appropriate level of trunk support. Whilst the headrest cannot prevent the head from dropping forwards, using the Pro-tech backrest and drop seat board to create a slightly tilted sitting position can allow gravity to assist in holding the head back against the headrest.



Headrest Brackets

Standard Rock and Roll Headrest Stem

- Features innovative ‘dogbone’ link to allow a good range of fore and aft adjustment whilst retaining strength and maintaining the adjusted position.
- Supplied with a vertical slide track for ease of positioning.
- The headrest can also be offset laterally by up to 4” / 10cm.
- Headrest stem is supplied with a trigger release mechanism, allowing easy removal.
- Collar ensures the headrest is consistently correctly repositioned.
- Weight – 0.678kg.



Flip Down Rock and Roll Headrest Stem

- Features a flip down function and self-locking re-engagement mechanism.
- Supplied with a vertical slide track for ease of positioning.
- Uses innovative ‘dogbone’ link to allow a good range of fore and aft adjustment whilst retaining strength and maintaining the adjusted position.
- Ideal for users who are prone to misplacing accessories when attending school, college, day care etc...
- The ‘Rock and Roll’ flip down headrest allows quick removal; ideal for clients who are hoisted. Ensures consistent correct placement.



Product	Order Code
POSAlink Adjustable Headrest Stem	P18191
Standard Rock and Roll Headrest Stem	1493575
Flip Down Rock and Roll Headrest Stem	1493576

POSAlink Stem

- Multi-adjustable, enabling optimum positioning of the headrest pad.
- Stem is removable.
- Built to accommodate a range of headrest pads.
- Weight – 0.730kg.



Lateral Brackets



Fixed Lateral Brackets

- Deliver additional lateral support for the user.
- Designed to be mounted between the shell backrest cushion, giving discrete support.
- Now available in strong, lightweight aluminium with black powder coat finish.
- Two sizes available.
- Sold in singles.



Lift-up Swing-away Brackets

- Designed to lift up and swing out with minimal effort, enabling quick and easy transfers.
- Offers additional lateral support for the user.
- Now available in strong, lightweight aluminium with black powder coat finish.
- Available in two sizes, small and large.
- Sold in pairs.



Push Button Swing-away Brackets

- Simple button-operated swing-away mechanism allows quick and easy transfers.
- Side-to-side lateral adjustment.
- Offers additional lateral support for the user.
- Also allows some angle adjustment for fine-tuning the position.
- Sold in pairs.



When ordering lateral pads, please indicate which style of mounting bracket they are going to be fitted to, to ensure you receive pads with compatible fixings.

Lateral Supports



Lateral Pads

Choice of two styles of lateral pads:

- “Traditional” D shaped lateral pads for discrete support.
- Curved lateral pads, designed to provide a more contoured fit.

When ordering lateral pads, please indicate which style of mounting bracket they are going to be fitted to, to ensure you receive pads with compatible fixings.

NB. Curved lateral pads are designed for use with a swing-away bracket to ensure they do not impede the user’s ability to transfer in and out of their seat.

- Mount in between the backrest shell and cushion for adjustable trunk support.
- Suitable for use with individuals with poor sitting balance or a mild scoliosis.
- Swing-away option for easy transfers.
- Curved lateral pad option available for improved support.
- ½” / 1.3cm and ¼” / 0.63cm spacers available. (Refer to page 11).



Lateral	Size	Order Code
Fixed Lateral Hardware, fitted with D pads	Small	1494029
Fixed Lateral Hardware, fitted with D pads	Large	1494030
Lift-up Swing-away Lateral Hardware, fitted with Curved pads	Small	1494031
Lift-up Swing-away Lateral Hardware, fitted with Curved pads	Medium	1494032
Lift-up Swing-away Lateral Hardware, fitted with Curved pads	Large	1494033
Lift-up Swing-away Lateral Hardware, fitted with D pads	Small	1495224
Lift-up Swing-away Lateral Hardware, fitted with D pads	Large	1495225
Push-button Swing-away Lateral Hardware, fitted with Curved pads	Small	1503894
Push-button Swing-away Lateral Hardware, fitted with Curved pads	Medium	1503895
Push-button Swing-away Lateral Hardware, fitted with Curved pads	Large	1503896
Push-button Swing-away Lateral Hardware, fitted with D pads	Small	P25250+62
Push-button Swing-away Lateral Hardware, fitted with D pads	Large	P25252+62



Brackets and Securing Fixtures

Stopper

- One size fits both 7/8" / 2.2cm and 1" / 2.5cm tube diameters.

Stopper	Order Code
Stopper (single)	1497632

Easy Clamp Securing Clips

- Secures the Back Shell and Drop Seat Board, ensuring exact positioning every time.
- Easy Clamp snaps on, then is closed to secure.
- Easy to release.

Easy Clamp	Order Code
Easy Clamp 7/8" / 2.22cm (single)	1497613
Easy Clamp 1" / 2.5cm (single)	1497623

U Clamp

- One size fits both 7/8" / 2.2cm and 1" / 2.5cm

U Clamp	Order Code
U Clamp (single)	1497625

TensionHook Hardware

- Fitted to L-Bracket hardware secured to the Pro-tech Back shell.
- TensionHooks snap securely onto chair rails, ensuring easy installation and removal.
- Highly durable.

TensionHook	Order Code
TensionHook 7/8" / 2.2cm (single)	1497538
TensionHook 1" / 2.5cm (single)	1497611

VERSALock Securing Clips

- Designed to secure the Back Shell and Drop Seat Board, ensuring exact positioning every time.
- The top of the VERSALock hardware slides over the TensionHook with a spring-loaded snap action to ensure a precise, firm fixture.

VERSALock	Order Code
VERSALock Securing Clip (single)	P80010



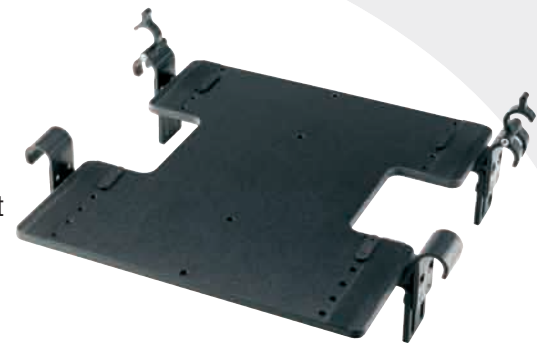


Drop Seat Board

The fully adjustable Pro-tech drop seat board provides a firm base of support for a wheelchair cushion.

- Can be adjusted to fit a range of different chair frames and widths with a central cross bar.
- Drop seat is supplied with a choice of the VERSALock, Easy Clamp, or Heavy Duty mounting systems for quick, easy and secure installation onto a wheelchair.
- Can be positioned with a front to back difference of up to 3" / 7.62cm if required.
- Provides a firm base for a wheelchair cushion removing the effects of 'canvas sag'. Canvas sag can reduce the effectiveness of anatomically shaped cushions and encourages unwanted hip adduction/internal rotation.
- Adjustable angle to suit individual need.
- Enables the seat cushion to be ramped to restrict forwards sliding.
- Can be used in conjunction with a Pro-tech Back to create a subtly tilted position. A tilted seat uses the effects of gravity to increase trunk support and help to prevent forwards sliding.
- Can be used in conjunction with a Pro-tech Back to create an acute seat angle (less than 90 degrees) to help to prevent mild extensor patterns.
- Allows seat to be lowered in the wheelchair to aid foot propulsion or transfers.

The actual width of the drop seat board will measure 2¾" / 7cm narrower than the frame width, e.g. the 18" / 45.72cm drop seat board will be 15¼" / 38.7cm wide, to fit an 18" / 45.72cm seat frame.



Drop seat, with Easy Clamp Complete Kit				
Description	7/8"	Order Code	1"	Order Code
Drop Seat board 12W 12D	7/8"	1503979	1"	1503989
Drop Seat board 12W 14D	7/8"	1503980	1"	1503990
Drop Seat board 14W 14D	7/8"	1503981	1"	1503991
Drop Seat board 16W 14D	7/8"	1503982	1"	1503992
Drop Seat board 14W 16D	7/8"	1503983	1"	1503993
Drop Seat board 16W 16D	7/8"	1503984	1"	1503994
Drop Seat board 18W 16D	7/8"	1503985	1"	1503995
Drop Seat board 20W 16D	7/8"	1503986	1"	1503996
Drop Seat board 18W 18D	7/8"	1503987	1"	1503997
Drop Seat board 20W 18D	7/8"	1503988	1"	1503998
Also available with VersaLock Kit				

Drop Seat Hardware Kit	Order Code
Drop Seat Hardware Kit for 12-14 seats inc 4 x Easy Clamps 7/8" / 2.2cm	1497361
Drop Seat Hardware Kit for 12-14 seats inc 4 x Easy Clamps 1" / 2.5cm	1497386
Drop Seat Hardware Kit for 16-24 seats inc 4 x Easy Clamps 7/8" / 2.2cm	1497829
Drop Seat Hardware Kit for 16-24 seats inc 4 x Easy Clamps 1" / 2.5cm	1497830
*All kits inc. 4 L. brackets	

Optional Heavy Duty Hardware

- Designed to securely fix the Drop Seat Board to a wheelchair frame.
- Suitable for the heavier user (up to 20 stone / 127 kg).

Heavy Duty Hardware	Order Code
Drop Seat Heavy Duty Hardware Kit with 4 x L-Brackets, 4 sets of weld nuts & screws. To fit size 12-14 Drop Seat	1503922
Drop Seat Heavy Duty Hardware Kit with 4 x L-Brackets, 4 sets of weld nuts & screws. To fit size 16-20 Drop Seat	1503923

Caution -
Using a drop seat board that is too small for the wheelchair width may reduce the strength of the board.





Abductors

Abductor Pads

The Abductor pad is used to position the user's legs out of adduction, for improved posture and stability.

- Constructed from a wood core, surrounded by foam.
- Pad is tapered, for additional comfort.
- Available in 4 sizes. (the foam thickness increases with pad size).

	Width (Tapering)	Length	Height	Order Code
Small	3" / 7.6cm to 2" / 5cm	3" / 7.6cm	3" / 7.6cm	1495288
Medium	3" / 7.6cm to 2" / 5cm	4" / 10.2cm	3" / 7.6cm	1495321
Large	4" / 10.2cm to 2" / 5.1cm	5" / 12.7cm	4" / 10.2cm	1495622
Xtra Large	5" / 12.7cm to 3" / 7.6cm	6" / 15.2cm	5" / 12.7cm	1495623



Flip Down Mounting Bracket

- Flip Down Mounting Bracket swings the pad under the seat to facilitate easy transfers.
- Large push-button release.
- Pad returns to the same position each time.

Product	Order Code
Flip Down Abductor; complete set of hardware - no pad included - Standard 3" / 7.6cm height	1503920
Flip Down Abductor; complete set of hardware - no pad included - Extended 5" / 12.7cm height	1503921

- Use to support good thigh alignment and prevent hip adduction (knees together).
- Fits to the drop seat board for adjustable positioning.
- Effective alternative when a Flo-tech Solution Xtra pommel is not sufficient, or impedes transfers.
- Select the extended track when using with cushions deeper than 3"/7.6cm.



Bracket - with Standard Track



Bracket - with Extended Track

Contraindications

Uncontrolled sliding forwards in the seat.

Adductors



Knee Adductors

- Adjustable design with multi-positioning rods and joints provides a pad and bracket combination which can be positioned at the side of the knee for optimum support.
- Sold in pairs; also available as a single unit.
- Used to support good thigh alignment and prevent hip abduction (knees splayed out).
- Ideal for use with swing away foot plates to allow easy removal for transfers.
- Effective alternative where Flo-tech Solution Xtra thigh aligners are not sufficient or impedes sliding transfers.

Adductor	Order Code
Knee Adductor 7/8" / 2.2cm	1495918
Knee Adductor 1" / 2.5cm	1495919

Contraindications Use with fixed front wheelchairs may restrict transfers.

Hip / Thigh Guides

- Fits to the Drop Seat Board.
- Facilitates good thigh alignment and helps prevent hip abduction.
- Can be fitted further back in the seat to assist centralising the pelvis.
- Supplied as a pair.
- 1/2"/1.3cm & 1/4"/0.63cm spacers are available. These can also be used on Lateral Brackets.

Hip/Thigh Guide	Length	Width	Depth	Order Code
Hip/Thigh Guides with Slimline Pad (Small)	6" / 15.2cm	1/2" / 1.3cm	4" / 10.2cm	1495931
Hip/Thigh Guides with Slimline Pad (Medium)	8" / 20.3cm	1/2" / 1.3cm	4" / 10.2cm	1495932
Hip/Thigh Guides with Slimline Pad (Large)	10" / 25.4cm	1/2" / 1.3cm	4" / 10.2cm	1495933
Hip/Thigh Guides with Standard Pad (Small)	6" / 15.2cm	1" / 2.5cm	4" / 10.2cm	1503877
Hip/Thigh Guides with Standard Pad (Medium)	8" / 20.3cm	1" / 2.5cm	4" / 10.2cm	1503879
Hip/Thigh Guides with Standard Pad (Large)	10" / 25.4cm	1" / 2.5cm	4" / 10.2cm	1503880

Hip/Thigh Guide with Offsets	Length	Width	Depth	Order Code
Hip/Thigh Guide with Offset and Slimline Pad (Small)	6" / 15.2cm	1/2" / 1.3cm	4" / 10.2cm	1496061
Hip/Thigh Guide with Offset and Slimline Pad (Medium)	8" / 20.3cm	1/2" / 1.3cm	4" / 10.2cm	1496062
Hip/Thigh Guide with Offset and Slimline Pad (Large)	10" / 25.4cm	1/2" / 1.3cm	4" / 10.2cm	1406093
Hip/Thigh Guide with Offset and Standard Pad (Small)	6" / 15.2cm	1" / 2.5cm	4" / 10.2cm	1503881
Hip/Thigh Guide with Offset and Standard Pad (Medium)	8" / 20.3cm	1" / 2.5cm	4" / 10.2cm	1503882
Hip/Thigh Guide with Offset and Standard Pad (Large)	10" / 25.4cm	1" / 2.5cm	4" / 10.2cm	1503883



Spacers	Order Code
Spacer 1/2" / 1.3cm	1495286
Spacer 1/4" / 0.6cm	1495287



Foot Supports

Shoe Holders

- Foot supports are form moulded in 5 different sizes.
- Supplied in pairs.



Foot Support Size	Overall Length	Overall Width	Inside Width	Order Code
Small	5" / 12.7cm	3½" / 9cm	2¼" / 5.7cm	1496425
Small / Medium	5¾" / 14.6cm	3¾" / 9.5cm	3" / 7.6cm	1496426
Medium / Large	7¼" / 18.4cm	4¼" / 10.8cm	3½" / 9cm	1496905
Large	8" / 20.3cm	5" / 12.7cm	4⅝" / 11cm	1496906
Xtra Large	10" / 25.4cm	5¼" / 13.3cm	4½" / 11.43cm	1496936

Dynamic High Tops

- Supplied as pairs.
- Designed to provide ankle support as well as foot positioning, the anatomical design offers a comfortable alternative to standard wheelchair heel loops or shoe holders.
- Robust construction, with 1" nylon webbing; comes fitted with a D-ring style mounting system.
- High Tops keep the feet positioned on the footplates and protect the heels from being knocked by the wheelchair casters as they turn.
- Enables specific positioning of the feet to be maintained to aid good overall leg and pelvic positioning whilst allowing some movement for increased comfort.
- Can help to prevent rotation, inversion or eversion of the foot.
- Can also be useful for clients who experience their feet 'jumping off' the footplates as a result of clonus or spasms.



Dynamic High Top Size	Webbing Minimum Ankle	Circumference Maximum Ankle	Circumference	Order Code
Xtra Small	1" / 2.5cm	5½" / 14cm	8½" / 21.6cm	1496391
Small	1" / 2.5cm	7½" / 19cm	10½" / 26.7cm	1496392
Medium	2" / 5cm	9½" / 24cm	12½" / 31.8cm	1496423
Large	2" / 5cm	11½" / 29.2cm	14½" / 36.8cm	1496424

Harnesses



All harnesses are available in static and dynamic versions. The dynamic style harnesses are made from Lycra which stretch to allow movement, whilst aiding good positioning back against the backrest when user is at rest. All harnesses can be removed for washing.

Anti-Thrust Harness

- Rests on top of the seat under the buttocks.
- Anterior straps come between the legs and outward over the thighs and buckle near the proximal hip/thigh.
- Straps are adjustable for different degrees of tension.
- Harness is available in four different sizes, in Static and Dynamic versions.
- Helps to prevent sliding in the seat, and can help to control thrusting. Can also help to reduce the tendency for pelvic rotation and pelvic obliquity. Does not restrict upper body movement.
- More comfortable than using a central groin strap.



Contraindications

- Hip dislocations.
- Please note this product may influence the effectiveness of a pressure redistribution cushion as it is designed to be used on top of the cushion.

	A	B	C	D	Order Code for Static Anti-Thrust Harness	Order Code for Dynamic Anti-Thrust Harness
Small	10" / 25.4cm	6" / 15.2cm	6" / 15.2cm	5" / 12.7cm	1503897	1496352
Medium	12" / 30.5cm	8" / 20.3cm	8" / 20.3cm	5" / 12.7cm	1503898	1496353
Large	16" / 40.6cm	12" / 30.5cm	12" / 30.5cm	6" / 15.2cm	1503899	1496372
Xtra Large	20" / 50.8cm	16" / 40.6cm	16" / 40.6cm	7" / 17.8cm	1503900	1436390

Thoracic Support Harness

- The straps on the Thoracic Support Vest are designed to be positioned over the shoulders for maximum comfort and control whilst leaving the neck area free from obstruction.
- Squeeze release buckles at all four strap ends allow for quick removal.
- Six sizes available, in Static and Dynamic versions.



	A	B	C	D	E	Order Code for Static Thoracic Support Harness	Order Code for Thoracic Support Harness
XX Small	4" / 10.2cm	12" / 30.5cm	3" / 7.6cm	6½" / 16.5cm	4½" / 11.4cm	1497839	1497940
Xtra Small	5" / 12.7cm	15½" / 39.4cm	3½" / 9cm	7¾" / 19.7cm	5½" / 14cm	1497882	1497941
Small	6¼" / 16cm	17¼" / 43.8cm	4¼" / 10.8cm	8¾" / 22.2cm	6" / 15.2cm	1497910	1497942
Medium	7¼" / 18.4cm	18½" / 47cm	5¼" / 13.3cm	10" / 25.4cm	7" / 17.8cm	1497911	1497943
Large	8" / 20.3cm	20" / 50.8cm	5¾" / 14.6cm	11½" / 29.2cm	8" / 20.3cm	1497938	1497973
Xtra Large	8½" / 21.6cm	21½" / 54.6cm	6¼" / 17cm	13" / 33cm	9½" / 24cm	1497939	1497974

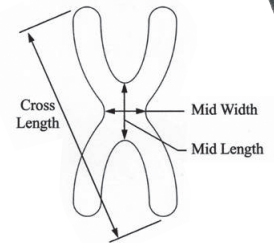


X Chest Harness

Traditional cross-shaped harness for anterior support, complete with 1" / 2.54cm webbing straps and buckle release.

- Ideal for supporting the shoulders back against the backrest whilst leaving the neck area free from obstruction.
- Squeeze release buckles at all four strap ends allow for quick removal.
- Six sizes available.

	Cross Length	Mid Width	Mid Length	Order Code for Static X - Chest Harnesses	Order Code for Dynamic X - Chest Harnesses
Xtra Xtra Small	14" / 35.6cm	3¼" / 8.3cm	3½" / 9cm	1497975	1498007
Xtra Small	16" / 40.6cm	3¼" / 8.3cm	4" / 10.2cm	1498002	1498084
Small	18" / 45.7cm	3½" / 9cm	4½" / 11.4cm	1498003	1498159
Medium	20" / 50.8cm	3½" / 9cm	5" / 12.7cm	1498004	1498188
Large	22" / 56cm	4" / 10.2cm	6½" / 16.5cm	1498005	1498189
Xtra Large	24" / 61cm	4" / 10.2cm	6¼" / 16cm	1498006	1498190

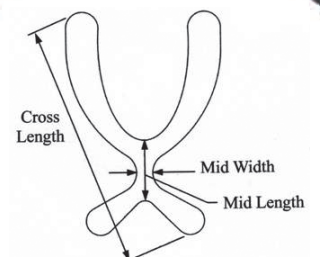


Free Form Harness

The Free Form Harness is shaped specifically to provide maximum comfort for female users.

- Provides anterior trunk support which can help stabilise the trunk, allowing better use of the upper limbs when used in conjunction with a firm back support such as the Pro-tech backrest and a suitable pelvic belt.
- Can also be used to prevent individuals from falling forwards when sitting.

	Cross Length	Mid Width	Mid Length	Order Code for Static Free Form Harness	Order Code for Dynamic Free Form Harness
Xtra small	11" / 28cm	1¼" / 3.2cm	4" / 10.cm	1498233	1498336
Small	15" / 38.1cm	1" / 2.5cm	4¾" / 12cm	1498250	1498337
Medium	18" / 45.7cm	1" / 2.5cm	4¾" / 12cm	1498332	1498351
Large	21" / 53.3cm	1¼" / 3.2cm	6" / 15.2cm	1498333	1498357
Xtra Large	23½" / 59.7cm	1¾" / 4.4cm	7" / 17.8cm	1498334	1498416





Harnesses

Y-Style Harness

- Designed to support and position for spinal / shoulder rotation, requiring the pull and control on one body side only.
- Allows for a close, comfortable fit around the shoulder and across the body.
- Can be applied to the left or right side of the client; suitable for both male and female body contours.

Product	Size	Order Code
Dynamic Y-style Harness	Small (18" / 45.7cm)	1503924
Dynamic Y-style Harness	Medium (20" / 50.8cm)	1503925
Dynamic Y-style Harness	Large (24" / 61cm)	1503926



Dynamic Chest Support

The Dynamic Chest Support is made from Lycra to provide anterior chest support whilst allowing some trunk movement.

- Not as restrictive as traditional harnesses.
- Helps to prevent falling forwards.
- Available in two sizes.
- Not static

Dynamic Chest Support	Height	Depth	Order Code
Regular	4" / 10.16cm	10" – 16" / 25.4cm – 40.64cm	1498445
Large	5" / 12.7cm	12" – 18" / 30.48cm – 45.72cm	1498446



Strap Risers

- Designed to be fitted to Pro-tech back shell, facilitating guidance of harness straps.
- Available as a pair.

Product	Order Code
25 degree Strap Risers	1498447



Safety

Postural harnesses are designed to provide postural support only and should not be used as a passenger restraint for transportation. A separate passenger restraint should always be used in line with the recommendations of the wheelchair manufacturer. The harness should be fitted over the sternum and not be positioned around the neck.

Allow enough space between the neck and the harness to ensure it does not pose a choking risk.

Always use in conjunction with an appropriately fitted pelvic belt, and ensure that the pelvis is well supported to minimise the risk of the user slipping down in the seat and choking on the harness.



Pelvic Belts

A choice of four styles of release mechanism are available with the pelvic belts, fitted with a single central pull for easy adjustment.

“Auto Style” Belt

This robust and strong single action release is similar to the mechanism used for car seat belts.



Size	Strap Width	Length	Order Code
Medium	1½" / 3.8cm	56" / 142.4cm	1498724
Large	2" / 5.1cm	60" / 152.4cm	1498730

“Aircraft Style” Belt

Similar to the belt systems used with passenger aircraft seats. The large pull lever mechanism makes it possible for a user to release using only large motor skills.



Size	Strap Width	Length	Order Code
Medium	1½" / 3.8cm	56" / 142.4cm	1498731
Large	2" / 5.1cm	60" / 152.4cm	1498732

Standard Push Button Belt

The Standard Push Button style pelvic belt is also available in a rear dual pull version for additional pelvic control.

- Can be used to correct flexible pelvic obliquity by pulling the pelvis back down into the seat. In order to do this, position the belt in front of, and below, the Anterior Superior Iliac Spine (ASIS) with the belt attached to the wheelchair at an angle which can bring the pelvis back into a neutral position. An angle of approximately 45 degrees can often be effective.



Size	Strap Width	Length	Order Code
Extra Small	1" / 2.5cm	46" / 116.8cm	1498487
Medium	1½" / 3.8cm	56" / 142.4cm	1498499
Large	2" / 5.1cm	60" / 152.4cm	1498700

Rear Dual Belt

Size	Strap Width	Length	Order Code
Extra Small	1" / 2.5cm	46" / 116.8cm	1503838
Medium	1½" / 3.8cm	56" / 142.4cm	1503839
Large	2" / 5.1cm	60" / 152.4cm	1503840



Pelvic Belts

Standard Squeeze Belt

The Standard plastic squeeze release mechanism is simple and effective, only requiring the finger and thumb to enable a quick release.



Size	Strap Width	Length	Order Code
Extra Small	1" / 2.5cm	46" / 116.8cm	1498708
Medium	1½" / 3.8cm	56" / 142.4cm	1498709
Large	2" / 5.1cm	60" / 152.4cm	1498723

Pelvic straps can be used in conjunction with a seat and backrest in order to stabilise the pelvis.

Four Point Pelvic Strap

Provided with a plastic squeeze release and a dual central pull adjustment for specific positioning.

- 4 Point Style Pelvic Belt can be used to correct pelvic rotation or anterior pelvic tilt, in order to do this, position the main part of the belt over the Anterior Superior Iliac Spine (ASIS) and fix to the backrest horizontal to the seat. Fix the secondary straps to the seat to prevent the belt riding up.



Size	Strap Width	Length	Order Code
Extra Small	1" / 2.5cm	46" / 116.8cm	1498448
Medium	1½" / 3.8cm	56" / 142.4cm	1498464
Large	2" / 5.1cm	60" / 152.4cm	1498473

Safety

- Postural harnesses are designed to provide postural support only and such not be used as a passenger restraint for transportation.
- A separate passenger restraint should always be used in line with the recommendations of the wheelchair manufacturer.



Size Information

Pro-tech Back System. Standard Easy Clamp Kit

Includes: Back Shell, Castellated Foam back cushion with cover, (4) L Brackets, TensionHooks, (2) Easy Clamps with positioning guides and fasteners.

To fit 7/8" / 2.22cm frame tubes

Frame Range	Shell Size	Standard	Tall	Deep Contour Standard	Deep Contour Tall
12"- 13"/ 30.5 - 33cm	12	1503931	1503938	1503943	1503950
12"- 15"/ 30.5 - 38cm	14	1503932	1503939	1503944	1503951
14"- 17"/ 35.6 - 43cm	16	1503933	1503940	1503945	1503952
16"- 19"/ 40.6 - 48.2cm	18	1503934	1503941	1503946	1503953
18"- 21"/ 45.7 - 53.3cm	20	1503935	1503942	1503947	1503954
20"- 23"/ 50.8 - 58.4cm	22	1503936	N/A	1503948	N/A
22"- 24"/ 56 - 61cm	24	1503937	N/A	1503949	N/A

To fit 1" / 2.54cm frame tubes

Frame Range	Shell Size	Standard	Tall	Deep Contour Standard	Deep Contour Tall
12"- 13"/ 30.5 - 33cm	12	1503955	1503962	1503967	1503974
12"- 15"/ 30.5 - 38cm	14	1503956	1503963	1503968	1503975
14"- 17"/ 35.6 - 43cm	16	1503957	1503964	1503969	1503976
16"- 19"/ 40.6 - 48.2cm	18	1503958	1503965	1503970	1503977
18"- 21"/ 45.7 - 53.3cm	20	1503959	1503966	1503971	1503978
20"- 23"/ 50.8 - 58.4cm	22	1503960	N/A	1503972	N/A
22"- 24"/ 56 - 61cm	24	1503961	N/A	1503973	N/A

Pro-tech Back System. Standard VersaLock Kit




Includes: Back Shell, Castellated Foam back cushion with cover, (4) L Brackets, TensionHooks, VersaLock positioning guides and fasteners.

Frame Range	Shell Size	Standard	Tall	Deep Contour Standard	Deep Contour Tall
12"- 13"/ 30.5 - 33cm	12	PSV12	PTV12	PSV12DC	PTV12DC
12"- 15"/ 30.5 - 38cm	14	PSV14	PTV14	PSV14DC	PTV14DC
14"- 17"/ 35.6 - 43cm	16	PSV16	PTV16	PSV16DC	PTV16DC
16"- 19"/ 40.6 - 48.2cm	18	PSV18	PTV18	PSV18DC	PTV18DC
18"- 21"/ 45.7 - 53.3cm	20	PSV20	PTV20	PSV20DC	PTV20DC
20"- 23"/ 50.8 - 58.4cm	22	PSV22	N/A	PSV22DC	N/A
22"- 24"/ 56 - 61cm	24	PSV24	N/A	PSV24DC	N/A

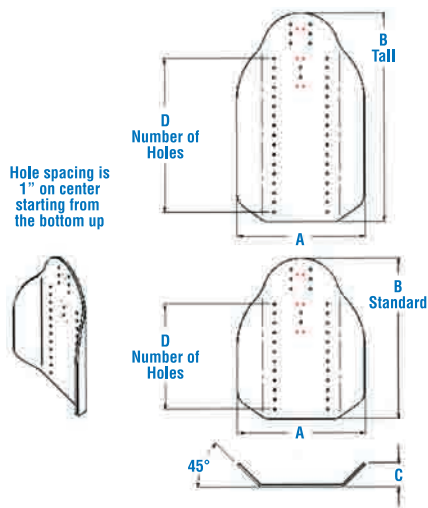
User Weight Limits

12 – 20 shell sizes	17.5 Stone / 113kg
22 – 24 shell sizes	30 Stone / 190kg
Crash Testing	Passed ISO16840-4
Warranty	Lifetime on all hardware - 3 years on all other parts
Replacements	All Parts

Back Shell Size Selector

			
	DI Drop In	FW-DI Full Width Drop In	FW Full Width
Measurement across the outside of the Backrest posts	10" / 25.4cm		12
	11" / 28cm		12
	12" / 30.5cm	12	14
	13" / 33cm	12	14
	14" / 35.6cm	14	16
	15" / 38cm	14	16
	16" / 40.6cm	16	18
	17" / 43cm	16	18
	18" / 45.7cm	18	20
	19" / 48.26cm	18	20
	20" / 50.8cm	20	22
	21" / 53.3cm	20	22
	22" / 56cm	22	24
	23" / 58.4cm	22	24
	24" / 61cm	24	





Standard Shell Dimensions					
		A	B	C	D
Shell Size	12	9 1/4	12 1/4	2	9
	14	11 1/4	14 3/4	2 1/4	11
	16	13 1/4	16 3/4	2 1/2	12
	18	15 1/4	18 1/4	2 3/4	13
	20	17 1/4	18 3/4	3 1/4	13
	22	19 1/4	20	3 1/2	13
	24	21 1/4	21	3 5/8	14

Tall Shell Dimensions					
		A	B	C	D
Shell Size	12	9 1/4	15 1/4	2	12
	14	11 1/4	18 3/4	2 1/4	15
	16	13 1/4	21 3/4	2 1/2	17
	18	15 1/4	23 1/4	2 3/4	18
	20	17 1/4	23 3/4	3 1/4	18



Invacare Ltd
South Road
Bridgend Industrial Estate
Bridgend
CF31 3PY
United Kingdom

T +44 (0) 1656 647 327

F +44 (0) 1656 649 016

E uk@invacare.com

W www.invacare.co.uk

Invacare MSS Ireland Ltd
Unit 5 Seatown Business Campus
Seatown Road
SWORDS
County Dublin
Ireland

T +353 18 107 084

F +353 18 107 085

W www.invacare.ie

Registered in Ireland number 6431019E

In keeping with our policy of continuous improvement, we reserve the right to modify designs without prior notice. All rights reserved.
Registered Trademarks of Invacare Ltd : Pro-tech, Flo-tech

