

**JAY**®

QUICK REFERENCE  
J3 BACK GUIDE

J3

# OVERVIEW

---



**STEP 1** Contour Depth

**STEP 2** Level of Support

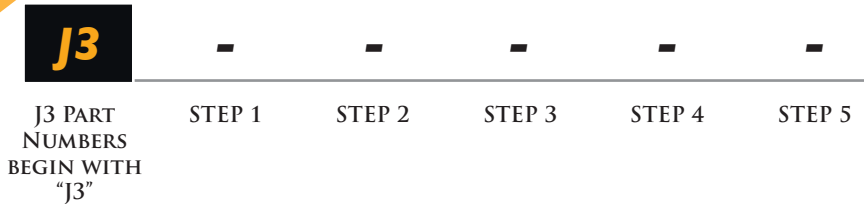
**STEP 3** Back Support Height

**STEP 4** Backrest Width

**STEP 5** Mounting Hardware

# For a custom-fit J3 Backrest, follow this 5-Step Guide to determine your **J3 Smart Part Number.**

*The part number that is generated over  
the next several pages is for illustrative purposes.  
Actual part numbers may vary.*



# STEP 1

## CONTOUR DEPTH

*Backrests shown  
from top view.*



Posterior (PA)



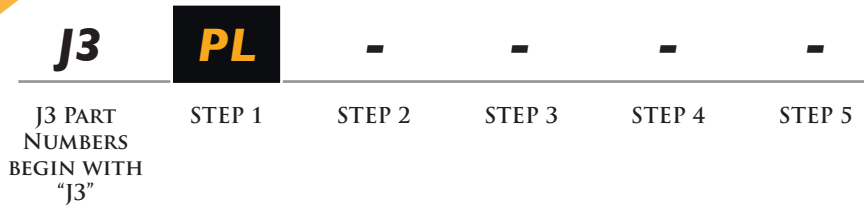
Posterior  
Lateral (PL)



Posterior  
Deep Lateral  
(PDL)



**Step 1** will determine Contour Depth.  
How much lateral support is needed: Posterior,  
Posterior Lateral or Posterior Deep Lateral?



# STEP 2

## LEVEL OF SUPPORT

*Each individual, depending on their functional needs and level of trunk stability, requires a different level of support.*



**Step 2** will determine Level of Support.  
Choose from Lower Thoracic up to  
Shoulder Height.

<b>J3</b>	<b>PL</b>	<b>UT</b>	-	-	-
J3 PART NUMBERS BEGIN WITH "J3"	STEP 1	STEP 2	STEP 3	STEP 4	STEP 5

# STEP 3

## BACK SUPPORT HEIGHT

*Within each level of support (Step 2), we offer short, medium, and tall height options to accommodate differences in the user's torso height*



Short (S)



Medium (M)



Tall (T)

In **Step 2** the user's Level of Support is chosen. Each of these support levels are offered in three Back Support Heights: Short, Medium, or Tall (**Step 3**).



# STEP 4

## BACKREST WIDTH



Posterior



Posterior  
Lateral



Posterior  
Deep Lateral

### Width

14 16 18 20

14 16 18 20

14 16 18 20



### Chair Back Cane Width

Based on outside  
back cane to  
outside back cane.

14 16 18 20  
to to to to  
16 18 20 22

14 16 18 20  
to to to to  
16 18 20 22

14 16 18 20  
to to to to  
16 18 20 22

### Trunk Width

Measure the widest  
part of the trunk  
supported by the  
back.

13 15 17 19

11.5 13.5 15.5 17.5

11 13 15 17

**Step 4** will determine the Backrest Width.  
Measure the widest part of the trunk covered by the back. Reference the chart to the left to select which width works best for the user.

<b>J3</b>	<b>PL</b>	<b>UT</b>	<b>M</b>	<b>18</b>	<b>-</b>
J3 PART NUMBERS BEGIN WITH "J3"	STEP 1	STEP 2	STEP 3	STEP 4	STEP 5

# STEP 5

## MOUNTING HARDWARE



**Standard (SH)**  
Adjustable Hardware  
Offers 1 1/2" posterior depth adjustment and may be required to achieve a maximum recline angle (22 degrees) without impacting seat depth.



**Extended (AH)**  
Adjustable Hardware offers an additional 1 1/2" of posterior depth.

In **Step 5** we'll select our mounting hardware.  
All backs accept Standard Adjustable Hardware  
or Extended Adjustable Hardware.

<b>J3</b>	<b>PL</b>	<b>UT</b>	<b>M</b>	<b>I8</b>	<b>SH</b>
J3 PART NUMBERS BEGIN WITH "J3"	STEP 1	STEP 2	STEP 3	STEP 4	STEP 5

# RECAP

## EXAMPLE SMART PART NUMBER

### Example Smart Part Number:

**J3PLUTMI8SH**

- |        |           |  |
|--------|-----------|--|
| STEP 1 | <b>J3</b> | J3 Back  |
|        | <b>PL</b> | Posterior and lateral support, meets 25mm posterior contour and 75mm lateral depth requirements. |
| STEP 2 | <b>UT</b> | Designed for supporting the back through the upper thoracic spine.                               |
| STEP 3 | <b>M</b>  | Medium height back in the upper thoracic support position.                                       |
| STEP 4 | <b>I8</b> | Designed to fit wheelchairs 18-20 inches in width.   |
| STEP 5 | <b>SH</b> | Standard adjustable attaching hardware.  |

# Let's **Recap** how we obtained our **J3 Smart Part Number.**

*This part number is for illustrative purposes.  
Actual part numbers may vary.*

**J3**

**PL**

**UT**

**M**

**18**

**SH**

J3 PART  
NUMBERS  
BEGIN WITH  
"J3"

STEP 1

STEP 2

STEP 3

STEP 4

STEP 5

# ACCESSORIES

## Spine-Align Kits

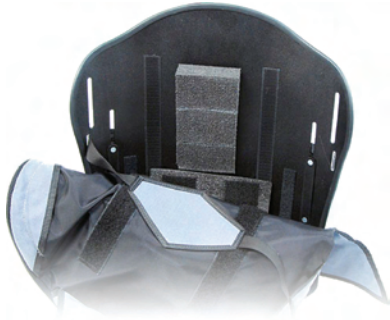
Spine-Align Kit I



Spine-Align Kit II



## Spine-Align Components



The components slip between the shell and the cover. It is not necessary to open the foam cover.



Small Lumbar

Large Lumbar

Lateral Shim

Posterior/  
Lateral Pelvic

Wedge



Curved Shim

Flat Shim

Small Bean Bag

Large Bean Bag

# ACCESSORIES

## Headrest



Plush  
*Cobra Mount & Bracket*



C-Plush  
*AXYS Mount  
& Bracket*



Contour Cradle  
*Cobra FB Mount &  
Bracket*

## Laterals



Fixed Lateral



Swing-Away Laterals

## ***Chest Strap Harness***




Contour Style



Classic Style



Center Opening  
with Buckle



For more information, please visit the J3 Webpage at [J3.sunrisemedical.com](http://J3.sunrisemedical.com) or call 1-800-333-4000

© 2007 Sunrise Medical. Sunrise Medical and Jay® are trademarks of Sunrise Medical.



303-218-4600 800-333-4000 In Canada 800-263-3390

105206 Rev. B 10.07