



2023

FormAlign[®]

Dynamic support **on time**



**Supplying
Innovative Mobility &
Seating Products.**

Making Your Day!

Free demos
Business support
Expertise on hand
Delivery nationwide

Contents

Mobility & Seating

Cushions	04
Backrests	12
Postural Support	16
Positioning & Accessories	22
Belts & Harnesses	28

Our Story

Here at FormAlign® our team has its roots right at the heart of the healthcare industry. For over 30 years we have worked closely with healthcare professionals, providing care equipment and have developed a strong reputation to provide the right advice and the right product solution for the service user, based on a depth of understanding of the needs that exist.

Today we focus on postural seating products and component solutions, supporting our network of distributors, wheelchair services and community loan stores throughout the UK. Through close experiences and extensive networking, we have developed products focused around the needs of the industry. Our range of postural components and solutions for wheelchair seating, and cushions form a collection which delivers genuine value.

We know how important it is to deliver the right solutions on time, every time. Our distribution and warehousing operation is set up to offer competitive delivery times to support our trade partners – ensuring the right solution is prescribed on time for the end user who is at the centre of all that we do.

Reach out to us today to find out how together we can go further.



Cushions



Things to consider when choosing a cushion type

FormAlign® has eliminated the need for guesswork by streamlining and selecting high quality components to create our range of cushions. This saves valuable time and increases peace of mind, as well as a more consistent and dignified experience when a new cushion is issued.

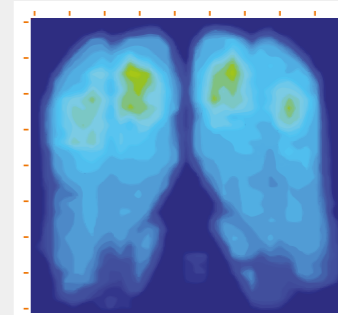
There are several components which offer a range of results which can be effective for many user needs. FormAlign has selected elements from each of these to create truly unique and modular solutions. The three primary variations include Gel, Air, and Foam.

Not only are our modular solutions ideally suited for a wide range of users and their changing needs, but they are also maintenance free and require minimal adjustment for the prescriber – once again saving time and increasing efficiency.

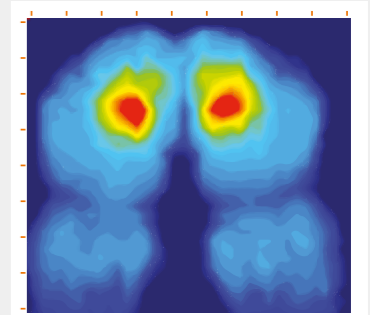
Bubble Foam Technology

Pressure Map Study

When independently tested at a rehabilitation institution, the FormAlign® cushion displayed far better pressure distribution than traditional contoured pressure relieving foam cushions. It exhibited minimal variance when alternating the pelvic tilt angle between posterior and anterior. When mapped the cushion was more comparable to an air cushion than its foam counterparts.



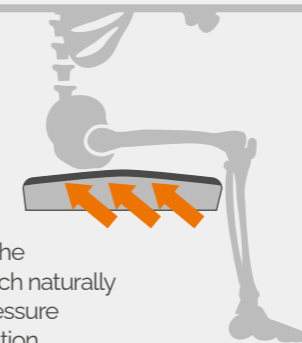
FormAlign® Cushion



"Other" Pressure Relieving Foam Contoured Cushion

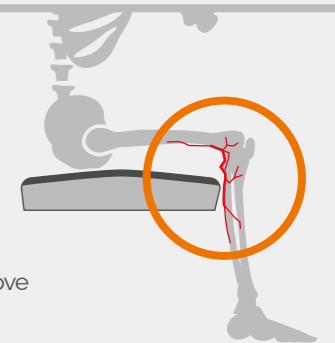
Shear Protection

The FormAlign® cushion's "bubble contouring" curved top surface gently restricts the forward tilt of the pelvis, which naturally reduces the risk of shear pressure regardless of the sitting position.



Improved Circulation

The mild forward curvature of the cushion relieves constriction to blood vessels behind the knee helping to improve circulation to the lower limbs.



Positioning For Asymmetrical Postures

The detachable pads shown below are used for accommodating or correcting asymmetrical postures. The pads may be layered according to the degree of the asymmetry and can be accurately positioned anywhere on the base of the cushion. You can cut these to shape with a sharp knife or scissors.



Woven Air

Leading the way in pressure area care!

KEPT IN STOCK

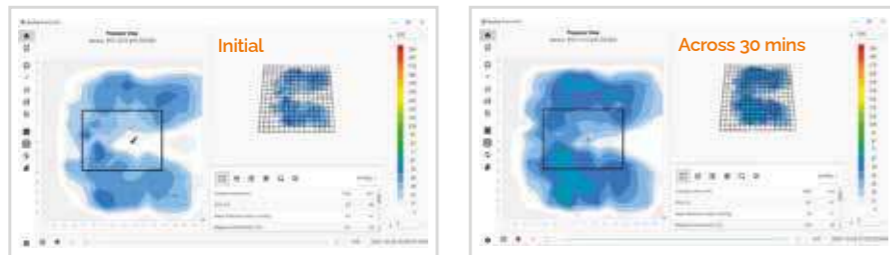


NEW

Woven Air

The all-new air cushion. Providing superior posture control that you've come to know, combined with the superior levels of pressure care

- ✓ Maintenance free air system
- ✓ Provides very high levels of pressure care
- ✓ Lateral stability and high-level posture care
- ✓ Available as a component-based unit for third party applications



Seat Width (")	Seat Depth (")	Code
14	14	FGA1739
14	16	FGA1740
14	18	FGA1741
15	15	FGA1742
15	17	FGA1743
15	19	FGA1744
16	16	FGA1745
16	18	FGA1746
17	17	FGA1747
17	19	FGA1748
18	18	FGA1749
18	20	FGA1750
18	22	FGA1751
19	19	FGA1752
20	20	FGA1753
20	18	FGA1754

Woven Air Tubes are available to purchase separately

Patented Woven Air™ Technology

How does it work?

Air travels through multiple air-tight tubes which are woven through a tube mat. The air tubes compress under the weight of the user redistributing the pressure.



Full Cushion

The result is an adjustable air cushion which has fantastic stability, great comfort, immersion & pressure redistribution without any ongoing maintenance.

The lightweight design offers a great choice for active users. Typically a 18x18 Woven Air cushions weighs in at approx. 1.35kg

Woven Air Inserts coming soon!



FormAlign® Assist

The FormAlign® Assist cushion is a comfortable seating solution for long term seated patients that have good core stability. This cushion contours around your patient for long lasting comfort whilst maintaining enhanced weight distribution and improves circulation in their lower limbs.

- ✓ 4 Way Stretch water-resistant cover
- ✓ Includes a set of 4 positioning pads for pelvic obliquity
- ✓ 15mm high contouring
- ✓ Pressure relief
- ✓ 136kgs SWL

Seat Width (")	Seat Depth (")	Code
8	8	FGA1306
	10	FGA1307
10	10	FGA1308
	12	FGA1309
12	12	FGA1310
	14	FGA1311
14	14	FGA1312
	16	FGA1313
	18	FGA1314
16	16	FGA1315
	18	FGA1316
	20	FGA1317
18	16	FGA1318
	18	FGA1301
	20	FGA1319
20	18	FGA1320
	20	FGA1302

KEPT IN STOCK



KEPT IN STOCK



FormAlign® Contour

The FormAlign® Contour cushion offers excellent weight distribution and stability. It is comfortable with its deep contour which assists with hip and thigh alignment. This is the perfect solution for long term seated patients who have reduced core stability and skin integrity.

- ✓ 4 Way Stretch water-resistant cover
- ✓ Includes a set of 4 positioning pads for pelvic obliquity
- ✓ 60mm high contouring
- ✓ Pressure relief
- ✓ 136kgs SWL

Hip Width (")	Seat Width (") <small>*external cushion width measurement</small>	Seat Depth (")	Code
6.5/7	8	8	FGA1112
		10	FGA1077
8.5/9	10	10	FGA1113
		12	FGA1078
		14	FGA1066
10.5/11	12	12	FGA1062
		14	FGA1067
		16	FGA1068
12.5/13	14	18	FGA1114
		16	FGA1069
		18	FGA1070
		20	FGA1071
16.5/17	18	16	FGA1072
		18	FGA1073
		20	FGA1074
		18.5/19	20
		20	FGA1076

Custom size options available

Contact us today to book your Woven Air System Demo



F1 Cushion

Lightweight and low profile, the F1 pressure care cushion is ideal for community applications. The gel component allows for pressure care to be added to standard riser recliner chairs and domestic seating in the community without compromising the seat size and dynamics.

- ✔ Paediatric and adult sizes available
- ✔ Size: 17 x 17 x 4"
- ✔ Plus size options available



F4 Cushion

The visco topped cushion in the F4, moulds to the shape of the user as the body warms the visco to allow for an increased positive immersion. The increased contact surface in turn reduces the risk to any specific area of skin by spreading the body loading. This medium level pressure cushion is an effective solution for those at risk of pressure sores.

- ✔ Paediatric and adult sizes available
- ✔ Size: 17 x 17 x 4"
- ✔ Plus size options available

F2 Cushion

The F2 static cushion is created from a single piece foam and is the entry level foam cushion on the series. Complete with a PU 4 way stretch cover, 2 sided zip and large zip cover to assist with infection control, this simple cushion provides a stable seat for those with limited mobility.

- ✔ Paediatric and adult sizes available
- ✔ Size: 17 x 17 x 4"
- ✔ Plus size options available



F2X Cushion

Designed for superior comfort through greater immersion, the air flow design is a first within a castellated cushion family, which also assists with temperature control. The 4 way air flow allows effective control of body temperature, combined with the breathable cover. The 4 way stretch cover also means pressure care is high on the agenda.

- ✔ Paediatric and adult sizes available
- ✔ Size: 17 x 17 x 4"
- ✔ Plus size options available

F5 Cushion

The F5 offers low to medium level pressure care whilst allowing effective guidance for high alignment. The gentle postural control in the F5 cushion provides support without the restriction access, function or comfort for the semi-active user.

- ✔ Paediatric and adult sizes available
- ✔ Size: 17 x 17 x 4"
- ✔ Plus size options available



F3 Cushion

The added layer of column gel provides superior seating for stability and pressure care. The unique layered design provides an effective solution for high risk pressure needs. The PU 4 way stretch cover and zip cover also assists with infection control. Particularly effective when temperature control of the user is a challenge and the gel provides shear reduction to maintain increased levels of posture.

- ✔ Paediatric and adult sizes available
- ✔ Size: 17 x 17 x 4"
- ✔ Plus size options available



F5+ with Gel Cushion

The combined solution of postural control and gel layer works to encourage an effective posture along with a high pressure care solution. The deep thigh and hip guides being integral allow for increased postural alignment. The wipeable cover and 4 way stretch means it is practical for use in many applications.

- ✔ Paediatric and adult sizes available
- ✔ Size: 17 x 17 x 4"
- ✔ Plus size options available

FormAlign® G3

The FormAlign® G3 Cushion is a lightweight mildly contoured, cushion designed for active users who have high pressure management needs. The ischial well is adjustable to accommodate fixed sacral postures or where some pelvic correction is the objective. It is a comfortable, long term solution for active users who have reduced stability and skin integrity.

- ✓ Integral Ischial well adjustment
- ✓ Lightweight ideal for active user
- ✓ 4 Way Stretch water-resistant cover
- ✓ Includes a set of 10 positioning pads for pelvic obliquity
- ✓ 15mm high contouring
- ✓ Pressure relief options
- ✓ 136kgs SWL

Measurements:

Thickness 3"



Seat Width (")	Seat Depth (")	Code
12	12	FGA1395
	14	FGA1396
14	14	FGA1397
	16	FGA1379
	18	FGA1398
16	16	FGA1399
	18	FGA1380
	20	FGA1400
18	18	FGA1401
	20	FGA1381
	22	FGA1402
20	20	FGA1403



KEPT IN STOCK

Cushion Rigidiser

The cushion rigidiser is designed to work in combination with a cushion on a wheelchair seat canvas to prevent "sagging" and loss of structure to ensure best postural control. It is simply placed inside the cushion. The composite material which this product is manufactured from maintains structure whilst keeping the weight to a minimum.

- ✓ 4mm thick
- ✓ Velcro strips for secure adhesion to base



KEPT IN STOCK

Seat Width (")	Seat Depth (")	Code
8	8	FGA1157
	10	FGA1158
10	10	FGA1159
	12	FGA1160
	12	FGA1129
	14	FGA1130
14	14	FGA1131
	16	FGA1132
	18	FGA1133
16	16	FGA1134
	18	FGA1135
	20	FGA1136
18	16	FGA1137
	18	FGA1138
	20	FGA1139
20	18	FGA1161
	20	FGA1162

Cushion Lateral Support

This innovative yet simple product has been designed to provide extra support when required against strong abduction.

- ✓ Fits inside cushion cover
- ✓ Velcro strips for secure fit
- ✓ Lightweight

Measurements:

Height of lateral: 3"



KEPT IN STOCK

Lateral Support Height (")	Seat Width (")	Code
3	8	FGA1115
3	10	FGA1116
3	12	FGA1117
3	14	FGA1118
4	16	FGA1080
4	18	FGA1119
4	20	FGA1120

FormAlign® STX

Looking for structure and adjustability within a cushion? The FormAlign® STX cushion offers a great deal of structure which in turn makes it one of the most supportive cushions on the market for both symmetrical and severely asymmetrical postures. The modular design allows many asymmetric postural challenges to be accommodated or corrected such as wind-sweeping, pelvic rotation, and range of movement limitations within the hip - all within the one system! All within the one system! The STX has optional "Cluster Gel" packs which can be used to further distribute pressure accurately for your more complex postures and skin integrity challenges. From lowering of femurs to offsetting lateral thigh guides, the options are endless!

- ✓ Core structural design withstands constant forces
- ✓ Modular design – customisable off the shelf solution
- ✓ Integral Ischial well adjustment
- ✓ 4 Way Stretch water-resistant cover
- ✓ Includes a set of 10 positioning pads for pelvic obliquity
- ✓ 80mm high contouring
- ✓ Able to be reset and re-issued
- ✓ Pressure relief options
- ✓ 136kgs SWL

Measurements:

Thickness 4"

Custom size options available

Hip Width (")	Seat Width (") <i>external measurement of cushions</i>	Seat Depth (")	Clusters Required	Code
10.5/11	12	12	3	FGA1513
		14	3	FGA1514
12.5/13	14	14	4	FGA1515
		16	4	FGA1516
		18	6	FGA1517
14.5/15	16	16	4	FGA1518
		18	6	FGA1519
		20	6	FGA1520
16.5/17	18	18	6	FGA1521
		20	6	FGA1522
		22	6	FGA152
18.5/19	20	20	6	FGA1524

Please note, the above codes are for the cushion only, foam or gel pads will need to be ordered

Clusters	Code
Foam Cluster	FGA1337
Visco Cluster	FGA1412
Gel Cluster	FGA1238



Seat Pan

Our FormAlign® quick release seat pan is a great solution for use on folding mobility chassis. Transport safety approved to WC20 and ISO16840-4 standards for forward facing transportation in a motor vehicle.

The seating system can be mounted onto the seat pan and removed easily for storage by parents and carers.

- ✓ Ideal for wheelchair storage restrictions
- ✓ Fully crash tested

To fit to rails 17-25mm diameter



KEPT IN STOCK

Seat Width (")	Seat Depth (")	Code
12	12	FGA1104
	14	FGA1105
14	14	FGA1106
	16	FGA1081
	18	FGA1107
16	16	FGA1108
	18	FGA1055
	20	FGA1109
18	18	FGA1110
	20	FGA1054
20	20	FGA1111

Backrests



Designed with everyone in mind

Our backrest systems have been designed with everyone in mind - from the prescriber and the technician to the wheelchair user themselves! The hardware fitting is straight forward to install and easy to use. From a user point of view the varying solutions - from foams to gels and air - give the user the best experience. Alongside this we have the BAC positioning system which can be retrofitted, presenting another simple tool for therapists and dealers to match the specific shape of the user ensuring maximum stability and superior levels of comfort.

Formalign Ignite Backrest

NEW



Can be used anyway up to achieve multiple thoracic lateral height position



Ignite

The FormAlign Ignite Backrest is designed for the active user and single shell backrest market. With a aluminium shell as well as the proven "bubble foam" for breathability & comfort as well as the U2 hardware, we have you backed all the way!

- ✓ Available in sizes from Paediatric to Adult
- ✓ Easy to prescribe, easy to adjust and easy to order!
- ✓ Can be recycled and reissued

Comes complete with mounting hardware.



10 Day lead time
Other sizes available on

DEEP Contour Shoulder Height Backrest complete with quick release hardware

User Chest Width (mm)	User Back Height (mm)	Backrest Size (")	Will fit Wheelchair Width (")	Lateral Support Depth (mm)	Will fit Backrest Tube Dia. (mm)	Code
280	400	14 x 16	12 up to 16	130	Up to 25mm	FGA1642
280	450	14 x 18	12 up to 16	130	Up to 25mm	FGA1643
305	400	15 x 16	13 up to 17	130	Up to 25mm	FGA1644
305	450	15 x 18	13 up to 17	130	Up to 25mm	FGA1645
330	450	16 x 18	14 up to 18	150	Up to 25mm	FGA1646
330	500	16 x 20	14 up to 18	150	Up to 25mm	FGA1647
355	450	17 x 18	15 up to 19	150	Up to 25mm	FGA1648
355	500	17 x 20	15 up to 19	150	Up to 25mm	FGA1649
380	450	18 x 18	16 up to 20	150	Up to 25mm	FGA1650
380	500	18 x 20	16 up to 20	150	Up to 25mm	FGA1651
430	450	20 x 18	18 up to 22	150	Up to 25mm	FGA1652
430	500	20 x 20	18 up to 22	150	Up to 25mm	FGA1661



Active Contour



Mid Contour



Deep Contour

Contact us today to book your Ignite Backrest Demo

FormAlign® Contour

The FormAlign® Contour Backrest is a one-piece shell with integrated lateral supports. The Contour's signature "bubble" improves immersion, enabling the backrest to closely match the contour of the user.

This is perfect for the semi active user, providing comfortable torso support and stability which, in turn, encourages a mid-line sitting position.

- ✓ Can be recycled and reissued
- ✓ Fully Crash Tested
- ✓ Pressure relief
- ✓ Compatible with third party wheelchairs
- ✓ 136kgs SWL

Comes complete with mounting hardware.

"These backrests will fit to wheelchairs that are 2" bigger or 2" smaller than the specified backrest size"



Wheelchair Width (")	Backrest Height (")	Trunk Width (")	Code
8	10	6	FGA1084
	12	6	FGA1088
10	12	8	FGA1085
	14	8	FGA1089
12	14	10	FGA1001
	16	10	FGA1002
14	18	10	FGA1003
	16	12	FGA1004
16	18	12	FGA1005
	20	12	FGA1006
18	18	14	FGA1007
	20	14	FGA1008
20	22	14	FGA1009
	18	16	FGA1010
18	20	16	FGA1011
	22	16	FGA1012
20	18	18	FGA1013
	20	18	FGA1014
	22	18	FGA1015

KEPT IN STOCK



FormAlign® Growth Kit

The FormAlign® Growth Kit enables the backrest to grow in height up to an additional 4".

Backrest Width (")	Code
12	FGA1122
14	FGA1123
16	FGA1124
18	FGA1125
20	FGA1126

KEPT IN STOCK



U2 Second Base Clamps Hardware

The U2 Second Base Clamps Hardware are for attaching the backrest to a 2nd mobility base.

- ✓ Easy to install and use
- ✓ Crash tested
- ✓ Unique triple lock mount

Code:

FGA1167 – 50mm clamps for Contour/Support Backrest
FGA1919 – 35mm clamps for Ignite Backrest

FormAlign® Support

The FormAlign® Support Backrest is a perfect platform for attaching modular supports such as swing-away or fixed adjustable lateral supports.

This is a great solution for less active users with symmetrical or asymmetrical postures.

"BAC system compatible for the Support Backrest. See page 20 for details."

- ✓ Can be recycled and reissued
- ✓ Fully Crash Tested
- ✓ Pressure relief
- ✓ Compatible with third party wheelchairs

Comes complete with mounting hardware.

"These backrests will fit to wheelchairs that are 2" bigger or 2" smaller than the specified backrest size"



Wheelchair Width (")	Backrest Height (")	Physical Shell Width	Code
8	10	125mm	FGA1082
	12	125mm	FGA1090
10	12	175mm	FGA1083
	14	175mm	FGA1091
12	14	225mm	FGA1016
	16	225mm	FGA1017
14	18	225mm	FGA1018
	14	275mm	FGA1163
16	16	275mm	FGA1019
	18	275mm	FGA1020
18	20	275mm	FGA1021
	16	325mm	FGA1164
20	18	325mm	FGA1022
	20	325mm	FGA1023
22	325mm	FGA1024	
	18	375mm	FGA1025
20	20	375mm	FGA1026
	22	375mm	FGA1027
20	18	425mm	FGA1028
	20	425mm	FGA1029
	22	425mm	FGA1030

For backrests, under 12", please use Kids Lo Rise Lateral Brackets, see page 19.

KEPT IN STOCK



4 Point Upgrade Kit

An optional kit to mount the backrest at 4 points as opposed to the standard two points. This can be used where a user may have strong extensor patterns or constant involuntary movements and offers peace of mind from a durability viewpoint.

Code: FGA1140

KEPT IN STOCK



U2 Replacement & Mounting Kit

These clamps are complete with L brackets.

Kit with Clamp Height	Code
50mm Clamp Height	FGA1154
35mm Clamp Height (Usually used for Ignite systems)	FGA1800

Postural Supports



Offer support right the way through

All our postural products are component based and have been designed to provide our customers with the tools to create the solution they need for their customers - from building a complete seating system to selecting specific postural parts. FormAlign® are here to support you right the way through!

Lateral Pads

Our range of lateral pads can be purchased separately which empowers the prescriber to decide which pad works for each specific case. Next Day Delivery is available on all lateral pads.

Teardrop Lateral Pad

The FormAlign® Teardrop Lateral Pad comes in three different sizing options and can be used on any lateral bracket, shown over.

KEPT IN STOCK



Pad Size	Dimensions	Code
Small	16cm H x 16cm L	FGA1049
Medium	19cm H x 17cm L	FGA1050
Large	23cm H x 19cm L	FGA1051

Straight Lateral Pad

The FormAlign® Straight Lateral Pad comes in three different sizing options and can be used on any lateral bracket, shown over.

KEPT IN STOCK



Pad Size	Dimensions	Code
X-Small	9cm H x 14cm L	FGA1041
Small	11cm H x 16cm L	FGA1042
Medium	12cm H x 18cm L	FGA1043
Large	13cm H x 22cm L	FGA1044

Curved Lateral Pad

The FormAlign® Curved Lateral Pad comes in three different sizing options and can be used on any lateral bracket, shown over.

KEPT IN STOCK



Pad Size	Dimensions	Code
X-Small	9cm H x 14cm L	FGA1045
Small	11cm H x 16cm L	FGA1046
Medium	12cm H x 18cm L	FGA1047
Large	13cm H x 22cm L	FGA1048

Cane Mounts

Swing-away brackets are available with our range of lateral pad options to offer the best fit, level of support and stability for the end user. The triple lock mounting hardware secures the clamp without risk of slipping.

FormAlign® Clamp-on Lateral Bracket

The clamp on lateral bracket can be clamped to wheelchair backrest canes/back posts and will fit to cane diameters of 17mm – 25mm (3/4 of an inch to 1") without the need of spacers. The dual pivot bracket delivers market leading adjustment and the support for the user just where it's needed.

- ✔ Will fit to wheelchair when tension adjustable backrest is required
- ✔ Will fit to most brands of wheelchair chassis
- ✔ Durable design
- ✔ Can be recycled and re-issued

Bracket Type	Left/Right	Code
Clamp-on Lateral Bracket	Left	FGA1323
Clamp-on Lateral Bracket	Right	FGA1324



Interface Kits

The interface brackets create solutions to achieve multiple positions for the thoracic support pad for maximum effectiveness. Can be used:

- ✔ On Tension adjustable backrest upholstery
- ✔ When trunk is in forward position due to kyphosis
- ✔ Third party seating frames
- ✔ Restricted arm movement
- ✔ When trying to maximise function such as self-propel motion

Measurements are for a guide only

KEPT IN STOCK

Ideal for Self Propel Users



Ideal for Powerchairs



Comes as standard with FGA1323 and FGA1324

Plate Size	Dimensions (W x L)	Code
Long Plate	70 x 120 mm	FGA1902*
Mid Plate	70 x 60 mm	FGA1901*
Short Plate	70 x 40mm	FGA1900

*When ordering FGA1901 and/or FGA1902, FGA1900 must be ordered also for mounting purposes

Shell Mounts

Adjustable fixed and swing-away brackets are available with our range of lateral pad options to offer the best fit, level of support and stability for the end user.

FormAlign® Fixed Lateral Bracket

The FormAlign® fixed brackets are width, height and depth adjustable with an off-set attachment position to enable enhanced attachment opportunities.

- ✔ Can be recycled and reissued
- ✔ Compatible with FormAlign® Support Backrest
- ✔ Compatible with third party backrests
- ✔ Designed to meet asymmetric postures

KEPT IN STOCK

Bracket Type	Code
Fixed Bracket	FGA1469



Standard Swing-Away Bracket

The standard Swing-Away hardware offers a durable system which has an inbuilt dual pivot design, essentially offering an inbuilt "off set" bracket, allowing for maximum trunk support for the user and ultimate positioning. In turn this allows for pressure to be spread over the largest possible surface area which increases comfort by reducing pressure.

- ✔ Can be recycled and reissued
- ✔ Compatible with FormAlign® Support Backrest
- ✔ Compatible with third party backrests
- ✔ Designed to meet asymmetric postures

KEPT IN STOCK

Bracket Type	Left/Right	Code
Standard Bracket	Left	FGA1052
Standard Bracket	Right	FGA1053



Lo-Rise Swing-Away Bracket

Lo-Rise Swing-Away hardware is the next step up from the standard Swing-Away hardware. The main difference being the vertical adjustment slot. This slot offers superior levels of pad adjustment. It allows us to overcome the well-known challenge of hardware clashes leading to trunk positioning compromises. This solution is very useful when the space is limited on the backrest.

- ✔ Can be recycled and reissued
- ✔ Compatible with FormAlign® Support Backrest
- ✔ Compatible with third party backrests

KEPT IN STOCK

Bracket Type	Left/Right	Code
Lo-Rise Bracket	Left	FGA1039
Lo-Rise Bracket	Right	FGA1040
Kids Lo Rise Lateral Bracket	Left	FGA1141
Kids Lo Rise Lateral Bracket	Right	FGA1142

For backrests, under 12", please use Kids Lo Rise Lateral Brackets



Lo-Rise Swing-Away Pivot Bracket

The additional Pivot variation of the Lo-Rise Swing-Away bracket allows the pad to become height adjustable in terms of angle adjustment which is the perfect solution for asymmetric trunk shapes and ensuring the maintaining high levels of pressure distribution. This hardware offers the most adjustment and is the most adjustable on the market.

- ✔ Most adjustable in the range with additional vertical Lo-Rise slot
- ✔ Angle adjustment for pad to meet severe scoliosis
- ✔ Unique dual pivot bracket – negates need for "Z" bracket
- ✔ Twin depth adjustment plate for pad position
- ✔ Compatible with third party backrests

KEPT IN STOCK

Bracket Type	Left/Right	Code
Lo-Rise Pivot Bracket	Left	FGA1384
Lo-Rise Pivot Bracket	Right	FGA1385



Making Your Day!

KEPT IN STOCK



Axis Headrest Stem Hardware

The Axis hardware is another word for durability! The design is only a true engineer's handywork. Alongside the heavy-duty system, it is also infinitely adjustable and will offer head support for both kyphotic positions and hyper-extended presentations, along with lateral offset positions to accommodate an asymmetric pattern.

- ✓ 13" forward adjustment as standard
- ✓ Extra links can be added for further reach
- ✓ Lateral positioning
- ✓ Durable mini cog design delivers heavy duty solution
- ✓ Swan neck stem allows for wider range of reach
- ✓ Can be used on third party backrests
- ✓ Complete with mount hardware

Code: FGA1436

H1 Headrest

The FormAlign® H1 is designed to offer a solution as a guide for the user's head. The contour pad is effective and is used for those with reasonable head control but may require some support during times of fatigue or when using the tilt in space feature.

- ✓ Dual ball pivot system for effective positioning
- ✓ Height and depth adjustment
- ✓ Can be used on third party backrests
- ✓ Complete with mount

Code: FGA1475

KEPT IN STOCK



Axis Headrest with Contour Pad

The Contour Pad is to support with lateral positioning and can be effective for a guide for the user as well as correction for the head position. Mounted on the Axis stem hardware, this kit is highly adjustable but easy to use daily.

- ✓ Pad available in 2 sizes
- ✓ Occipital shaping for extra support and comfort
- ✓ Foam removal for modifications
- ✓ Self-Adhesive gel available for added pressure relief shear reduction
- ✓ Comes complete with mounting hardware

KEPT IN STOCK



Pad Size	Dimensions	Code
Small	22cm H x 14cm L	FGA1127
Large	28cm H x 16cm L	FGA1128

KEPT IN STOCK



Axis Headrest with Pivot-Wing Pad

This kit is an unstoppable solution! The perfect answer for the engineer, the therapist and the repair department – so adjustable, easy to fit and durable! With this one kit, infinite adjustment is an understatement. Paralleled to this, the extremely durable design stands it apart from most headrests for complex needs.

- ✓ Pad available in 2 sizes
- ✓ Wings are width and depth adjustable
- ✓ Removable foam sections for pressure care upgrades or environmental controls
- ✓ Lateral pads can be used any way up for ultimate head positioning
- ✓ Self-Adhesive gel available for added pressure relief and shear reduction
- ✓ Comes complete with mounting hardware

Pad Size	Dimensions	Code
Small	22cm H x 14cm L	FGA1325
Large	28cm H x 16cm L	FGA1298



Positioning & Accessories

Components to deliver postural support and pressure care solutions

Our handpicked positioning products are all designed to provide the prescriber and rehab dealers the tools to complete the seating system to the best of their ability and for the best user experience and comfort. Whether looking to accommodate an asymmetric foot shape position or to provide added postural stability, our solutions come with many years of hands-on experience and awareness of the daily challenges faced in the specialist seating industry.

P8 Self-Adhesive Gel Sheet

Our FormAlign® Gel sheet product is another clever solution to provide additional pressure care and extra comfort for your customers. Created especially for you, the sheet has a self-adhesive backing and can be cut to the exact shape making it perfect for adding to existing areas of the seating such as headrest pads, trunk support pads andommel blocks.

The sheet is very stretchable and will fold round the contours of an existing postural component which may be in use. The column design allows the surface to reduce shearing on the skin and is effective in maintaining posture. Its extremely lightweight structure enables users to enjoy its benefits whilst hardly even knowing it is there!

Please note product FG9037 is not to be used on top of a seating cushion. Refer to P7 Gel Sheet and Gel Wrap options.

- ✓ Shear reducing design
- ✓ Lightweight
- ✓ Easy to cut and shape
- ✓ Self-Adhesive Backing
- ✓ Non-Absorbing
- ✓ Can be used on endless applications
- ✓ One gel sheet measures 42 x 46cm and is 1.3cm in depth

Code: FG9037



With endless applications, talk to us today about your specific project requirements!

KEPT IN STOCK

P7 Gel Sheet

This is **The Solution** which offers users the ability to sit longer without discomfort. Lightweight and low profile, the P7 Gel product is designed to work with other seating products such as custom wheelchair seating and contract seating where improved skin care is required. The gel component allows for pressure care to be added into a vast range of seating applications and can be applied to foam seating by seating manufacturers and service providers.

- ✓ High level pressure care
- ✓ Proven pressure redistribution
- ✓ Effective temperature control design
- ✓ Shear reducing design
- ✓ Worry-free comfort

Code: FG9067



KEPT IN STOCK

FormAlign® Gel Wrap

Our gel wrap system is designed to offer the user extra pressure care. The continuous surface area works well for some active users and those who have specific daily needs. The product can be retrofitted to most cushions and is a simple solution to providing the user with an increased level of pressure care.

Designed to work with the STX cushion, but can be used on other cushions – contact us to discuss your requirements.

- ✓ Range of size options
- ✓ Wipeable outer cover
- ✓ 4 way stretch fabric assists with pressure care

Seat Width (")	Seat Depth (")	Code
12	12	FGA1476
	14	FGA1477
14	14	FGA1478
	16	FGA1479
	18	FGA1480
16	16	FGA1481
	18	FGA1482
	20	FGA1483
18	18	FGA1484
	20	FGA1485
	22	FGA1486
20	20	FGA1487



KEPT IN STOCK

Positioning Cluster Pad

The foam cluster pads are used within the cushion range to create a base within the ischial well for superior immersion. The small clusters are designed to work with adjustable well options and a good choice when working with a custom well and fixed pelvic asymmetry. These clusters can be upgraded to the visco and gel version to increase pressure care levels when required.

- ✓ Can be used on custom ischial wells for accommodating pelvic asymmetries
- ✓ Velcro backing increases application choices
- ✓ 4 way stretch cover
- ✓ Allows for immersion and thus spreads the loading of pressure
- ✓ Can be used in shell backrest products

Pad Type	Code
Foam	FGA1337
Visco	FGA1412
Gel	FGA1238



KEPT IN STOCK

BAC System

Accommodating mild asymmetrical back profiles is often challenging.

Products that do not offer adjustment to meet these shapes often introduce risks, instability and lack of function for the user. The BAC positioning system has been launched to help to solve these challenges simply with its integral adjustment sections which means mild spinal and rib cage asymmetries can be accommodated easily.

The BAC product is available in a range of sizes and is designed to fit inside the FormAlign® Support backrest. It can be added when the user requires it as needs change and develop.

- ✔ Compatible with most shelled backrests in the market
- ✔ Designed to meet asymmetric postures
- ✔ Provides increased levels of stability and user function
- ✔ Can be reset and re-issued



Backrest Width (")	Backrest Height (")	Physical Width	Code
8	10	125mm	FGA1086
	12	125mm	FGA1092
10	12	175mm	FGA1087
	14	175mm	FGA1093
12	14	225mm	FGA1064
	16	225mm	FGA1065
	18	225mm	FGA1094
14	14	275mm	FGA1165
	16	275mm	FGA1063
	18	275mm	FGA1095
	20	275mm	FGA1096
16	16	325mm	FGA1056
	18	325mm	FGA1057
	20	325mm	FGA1058
	22	325mm	FGA1097
18	18	375mm	FGA1059
	20	375mm	FGA1060
	22	375mm	FGA1098
20	18	425mm	FGA1099
	20	425mm	FGA1061
	22	425mm	FGA1100

P12 positioning Kit

Lumbar and lateral wedge kit designed to be purchased for any backrest situation to assist with adjusting the backrest profile for each user. Velcro strips are already adhered to the components making the kit simple to use and configure.

- ✔ Closed-cell foam delivers structure for positioning
- ✔ Velcro strip already adhered
- ✔ Easy to cut to shape
- ✔ Can be used on almost every backrest support

Code: FG1554

Pad Types	Dimensions
Side Wedges	120 H x 90cm L
Lumber Pad	170cm H x 90cm L



Thigh/Hip Guides

The hip guides are easy to adjust in height, depth and width. The hip guides may also be rotated to suit internal, external femoral rotation or wind-swept postures.

FormAlign® wheelchair Hip-Guides are transport safety approved and designed to attach to the seat pan enabling precise positioning for the user. The unique flip-down function maintains the pads in a ready position for quick and easy transfers with wide open access to the user.

- ✔ Adjustable for symmetrical and asymmetrical postures
- ✔ Pads overlaid with comfortable high-density pressure relieving foam
- ✔ Can be rotated to suit internal, external femoral rotation or wind-swept postures.
- ✔ Available in range of sizes



Size (")	Code
10	FGA1143
12	FGA1178
14	FGA1179
16	FGA1180
18	FGA1144

Obliquity Pads

The obliquity detachable pads are designed for accommodating and correcting asymmetrical postures. The pads can be layered according to the degree of the asymmetry, can be accurately positioned anywhere on the base of the cushion and can be cut to shape with a sharp knife or scissors.

Size (")	Code
<small>*refers to width of cushion</small> 8	FGA1184
10	FGA1185
12	FGA1186
14	FGA1187
16	FGA1188
18	FGA1189



Swing Down Pommel

The FormAlign® swing-down pommel offers comfortable, firm support. With its pressure relieving foam overlay inside a water-resistant cover, it makes a perfect solution for that added thigh support.

- ✔ Compact push button release
- ✔ Height, depth and width adjustable



Pad Size	Dimensions	Code
Small	11cm L x 9cm H x 7cm W at front	FGA1147
Medium	15cm L x 10cm H x 8.5cm W at front	FGA1148
Large	18cm L x 11cm H x 11.5cm W at front	FGA1149

Self Adhesive Hook & Loop

Our self-adhesive hook and loop solution is again designed with you and your user in mind. The self-adhesive component has an acrylic backing and has an ultra-strong adhesion to many surfaces and is especially effective in the special seating industry.

- ✔ Ultra-strong self-adhesive backing
- ✔ 25mm or 50mm width available
- ✔ Available on 25m roll



Description	Code
50mm wide x 25m roll - LOOP	FGA1491
50mm wide x 25m roll - HOOK	FGA1490

Crumb Foam Footplate Pillow

KEPT IN STOCK

The Crumb Foam Footplate Pillow is designed to strap onto existing footplates. The Crumb foam filling can be moved to accommodate asymmetric foot shapes. It's the perfect solution for vulnerable skin and high-risk pressure points.

- ✔ Designed to strap onto existing footplates
- ✔ Crumb foam filling can be moved to accommodate asymmetric foot shapes
- ✔ Perfect solution for vulnerable skin and high-risk pressure points

Measurements	Code
380 mm L x 90mm H x 280mm W	FG9003



T Roll

KEPT IN STOCK

Designed to maintain midline leg position when lying supine, the T Roll can be used to prevent lower limb contractures.

- ✔ Designed to maintain midline leg position when lying supine
- ✔ Can be used to prevent lower limb contractures
- ✔ Effective to prevent wind-sweeping
- ✔ Filling can be adjusted to allow for increased immersion
- ✔ Crumb foam filling provides effective pressure care
- ✔ Wipeable covers
- ✔ Replaceable covers
- ✔ Size: 780mm L x 450mm H x 220mm Ø

Code: FG6031



FormAlign® P6

KEPT IN STOCK

The Bolster Roll has many applications from arm supports to trunk support. It's adjustable in size and structural support.

- ✔ Many applications from arm supports to trunk support
- ✔ Adjustable in size and structural support
- ✔ Crumb foam filling effective pressure care
- ✔ Wipeable cover
- ✔ Replaceable covers
- ✔ Size: 780mm L x 220mm Ø

Code: FG6053



FormAlign® P1

KEPT IN STOCK

- ✔ Ideal for support to heels and knees
- ✔ Prevents skin to skin contact
- ✔ Crumb foam filling
- ✔ Moulds to user's body shape
- ✔ Wipeable covers
- ✔ Size: 400mm L x 300mm H

Code: FG6054



FormAlign® P2

KEPT IN STOCK

- ✔ Ultimately used between the knees
- ✔ Designed to keep the knees from adduction
- ✔ For bed or chair use
- ✔ Wipeable covers
- ✔ Size: 360mm L x 300mm W x 120mm H

Code: FG6055



FormAlign® P3

KEPT IN STOCK

- ✔ Ideal for supporting upper or lower limbs in elevation
- ✔ Assists with blood circulation
- ✔ Off loads pressure points
- ✔ Wedge cushion, crumb filled
- ✔ Wipeable covers
- ✔ Size: 800mm L x 300mm W x 80/0mm H

Code: FG6056



FormAlign® P5

KEPT IN STOCK

- ✔ Structural wedge
- ✔ To be used with other "P" crumb foam filled products to add structure to a position
- ✔ Wipeable covers
- ✔ Size: 400mm L x 400mm W x 100/20mm H

Code: FG6058



Belts & Harnesses

Designed with positioning in mind

All the FormAlign® belts and harnesses are manufactured to a high standard and are designed with positioning in mind along with comfort and dignity for the user. The range is available in both adult sizes and paediatric and are held in stock for quick delivery.

KEPT IN STOCK



2 Point Pelvic Belt

Option	Size	Hip Width	Code
Dual Pull Adjustment	Extra Small	13-23cm	FG6005XS
Dual Pull Adjustment	Small	18-28cm	FG6005S
Dual Pull Adjustment	Medium	23-38cm	FG6005M
Dual Pull Adjustment	Large	33-63cm	FG6005L
Centre Pull Adjustment	Extra Small	13-23cm	FG6063XS
Centre Pull Adjustment	Small	18-28cm	FG6063S
Centre Pull Adjustment	Medium	23-38cm	FG6063M
Centre Pull Adjustment	Large	33-63cm	FG6063L
Anti-Tamper	Small	18-28cm	FG6034S
Anti-Tamper	Medium	23-38cm	FG6034M
Anti-Tamper	Large	33-63cm	FG6034L

KEPT IN STOCK



4 Point Pelvic Belt

Option	Size	Hip Width	Code
Centre Pull Adjustment	Extra Small	13-23cm	FG6062XS
Centre Pull Adjustment	Small	18-28cm	FG6062S
Centre Pull Adjustment	Medium	23-38cm	FG6062M
Centre Pull Adjustment	Large	33-63cm	FG6062L
Anti-Tamper	Small	18-28cm	FG6037S
Anti-Tamper	Medium	23-38cm	FG6037M
Anti-Tamper	Large	33-63cm	FG6037L

KEPT IN STOCK



Chest Harness with Zip

Size	Shoulder Width	Code
Extra Small	23-33cm	FG6014XS
Small	33-43cm	FG6014S
Medium	43-53cm	FG6014M
Large	53-63cm	FG6014L

KEPT IN STOCK



Chest Harness without Zip

Size	Shoulder Width	Code
Extra Small	23-33cm	FG6015XS
Small	33-43cm	FG6015S
Medium	43-53cm	FG6015M
Large	53-63cm	FG6015L

KEPT IN STOCK



Shoulder Harness

Size	Shoulder Width	Code
Extra Small	23-33cm	FG6016XS
Small	33-43cm	FG6016M

KEPT IN STOCK



Groin Harness

Code	FG6064

KEPT IN STOCK



Calf Strap

Code	FG6040
Measurements	470mm wide x 160mm high

KEPT IN STOCK



Ankle Huggers

Code	FG6011

KEPT IN STOCK



D-Rings

Code	FG6060

KEPT IN STOCK



Universal Strap

Code	FG6042
Measurements (can be cut)	1500mm long x 70mm wide

Hardware Tube Clamp

When making life easier is something on the agenda, the hardware clamp product is designed to fit tubular without the need of extra drilling or spacers. The simple yet unique product allows fitting of belts harnesses even easier and hassle free.

- ✔ Can be used in combination with our cam-buckle product
- ✔ Comes complete with bolts
- ✔ Can be purchased as part of a TripSaver fixation kit
- ✔ Seat rails and backrest canes from 17mm-25mm (3/4" to 1")

Code: FG6078

KEPT IN STOCK



Cam Buckles

Offered in a range of sizes our cam buckles will suit most belt and harness systems on the market. Available in a time saving kit form, it is the perfect solution for the engineer offering the parts readily available for mounting and adjusting the seating system and ensuring there is no compromise and no time lost.

- ✔ 3 widths available
- ✔ Pre-drilled for mounting
- ✔ Available as a trip saver kit solution

Size (mm)	Code
25	FG6065
40	FG6066
50	FG6067

KEPT IN STOCK



Tri Glides

The FormAlign® Tri Glides allow you to adjust the length of webbing/ strap of a belt, making it suit the end user better.

Size (mm)	Code
25	FG6073
38	FG6074
50	FG6075

KEPT IN STOCK



Harness Retainer Kit

The harness retainer hardware is used to guide the harness over the shoulder and ensure the specific position, prescribed by the clinical team, is maintained for the best result for posture.

- ✔ Maintains harness position
- ✔ Easily adjustable for the prescriber
- ✔ Can be used on third party backrests

Measurements	Code
190cm L x 200cm W	FGA1101

KEPT IN STOCK




Talk to our team about your own TripSaver Kit

Notes

Notes

Notes



Contact our team to discuss how
FormAlign® can support your organisation:

01473 467 777

sales@formalgroup.co.uk

FormAlign.com

FormAL Group Ltd - Unit 7 Liberator House, Clopton Park, Clopton, Woodbridge, IP13 6QT