



CONSOLOR
Improving Posture
Encouraging Comfort

Kids

Product range



Contents

Page 3: About Consolor

MyWam products

Page 4: Grizzly product information

Page 5: Grizzly key features

Page 6: Grizzly accessories

Page 7: Yeti Jr product information

Page 8: Yeti Jr key features

Page 9: Yeti Jr accessories

Page 10: Zefir product information

Page 11: Zefir key features

Page 12: Zefir accessories

Page 13: VILA product information

Page 14: VILA key features

Page 15: VILA accessories

Anatomic Sitt products

Page 16: Delfi Pro

Page 17: Delfi Pro features

Page 18: Active G2

Page 19: Active G2 features

Page 20: Flipper G2

Page 21: Flipper Flex G2

Page 22: Guppy G2

Page 23: Seabass G2

Page 24: Starfish Pro Hygiene seat

Trekinetic products

Page 25: Trekinetic K2 & GTE

LCS products

Page 26: 3D Printed Seating

Page 27: WheelAir

Consolor products

Page 28: Carved Foam Seating

Page 29: Moulded Seating

Page 30: SOLO

Page 31: Matrix & Lynx

Page 32: Flurve

Page 33: Purchasing your new seating
or mobility system



Consolor offers an extensive range of specialist seating and mobility systems across the UK, placing the safety, comfort and quality of our clients' lives at the heart of everything we do.



Our team of highly skilled and dedicated clinical seating specialists, provide posture, seating and mobility assessments to Wheelchair Service clients and private individuals across the nation. Offering expertly tailored advice on the most appropriate solution to meet each client's specific needs.

Get it touch to find out more about our products, or to book an appointment with one of our clinical seating specialists.

Contact us:

01202 827650
admin@consolor.co.uk
www.consolor.co.uk



Introducing the Grizzly buggy, equipped with 'I GROW WITH YOU' system which allows for a smooth extension of the backrest height and seat depth as your child grows.

Suitable for users
85 - 140 cm
Max. user weight 45kg



Product Benefits:

- Adjustable backrest height & seat depth
- Adjustable head, hip & trunk pads
- Reclining backrest offers lying position
 - Adjustable footrest
- Reversible, rearward facing seat
 - Tilt in space
 - 4 wheel suspension

Available colours



Seat width	18-40 cm	Total weight	20-28 kg
Seat depth	25-37 cm	Total length	97-115 cm
Backrest height	57-70 cm	Total height	108-123 cm
Footrest adjustable	23-40.5 cm	Total weight	65 cm
Folded dimensions	Frame: L80 x W64 x H35 cm Seat: L72 x W43 x H47		

Grizzly Features



Tilt in space seat
0° to 30° | 4 positions



Reclining backrest
0° to 81° | 6 positions



Adjustable angle footrest
0° to 95° | 5 positions



Reversible seat
Rotate seat towards driver



Lying position
Fully adjustable seat and footrest



Light folding frame
Dismantle into separate parts



'I GROW WITH YOU'
Seat depth 25 to 37cm
Backrest height 57 to 70cm



Stabilisation System
Postural laterals:
head, trunk, hips & thighs



Driving support
Rear suspension, central foot
operated break, tip assisted lever

Grizzly | Included Accessories



Five-point belt



**Adjustable head,
torso & hip pads**



Abduction belts



Grab bar/ barrier

Grizzly | Additional Accessories



Travel bag

Grey: 5906076410109
Burgundy: 5906076410123
Blue: 5906076410116



Canopy

Grey: 5906076410383
Burgundy: 5906076410406
Blue: 5906076410390



Shopping basket

Grey: 5906076410345
Burgundy: 5906076410352
Blue: 5906076410345



Winter Gloves

Grey: 5906076410147
Burgundy: 5906076410154
Blue: 5906076410147



Sleeping bag

Grey: 5906076410161
Burgundy: 5906076410178
Blue: 5906076410161



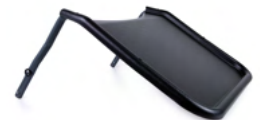
Pommel

Grey: 5906076410314
Burgundy: 5906076410321
Blue: 5906076410314



Sun umbrella

Grey: 5906076410192



Therapy Tray

Grey: 5906076410093



Rain cover

5906076410130



Mosquito net

5906076410185



Suitable for older or larger children, Yeti Junior comes equipped with the 'I GROW WITH YOU' system to enable smooth adjustments to the backrest height and seat depth as your child grows.



Suitable for users
130-175 cm
Max. user weight 80 kg

Product Benefits:

- Sturdy construction suitable for older /larger children
- Adjustable backrest height & seat depth
- Adjustable tension system to customise backrest & seat contour
- Reclining backrest offering flat lying position
- Quick release wheels for improved storage
- Fast folding mechanism
- Rear suspension

Yeti Jr Green (pictured)
5906076415036

Seat width	28/43 cm	Total weight	24-28.6 kg
Seat depth	31-45 cm	Total length	114.5-146 cm
Backrest height	65-85 cm	Total height	117-138 cm
Footrest adjustable	28.5-43.5 cm	Total weight	66 cm
Folded dimensions	L110 x W66 x H50 cm		

Yeti Jr Features



Tilt in space
9.5° to 29° | 5 positions



Reclining backrest
3° to 99° | 8 positions



Adjustable angle footrest
0° to 80° | 6 positions



Lying position
Fully adjustable seat & footrest



Windstopper
Reduces draughts & overstimulation



Light folding frame
Quick single frame fold



Adjustment options
4 adjuster pads



'I GROW WITH YOU'
Seat depth up to 45cm
Backrest height up to 85cm



Driving support
Rear suspension, central foot
operated brake, tip assist lever

Yeti Jr | Included Accessories



Five-point belt & abduction belt



Grab bar/barrier



Narrowing inserts



Headrest



Foot brake, tip assist lever



Canopy with window

Yeti Jr | Additional Accessories



Sun Umbrella
5906076411465



Therapy Tray
5906076410499



Pommel
5906076410512



Shopping basket
5906076413735



Winter Gloves
5906076411540



Travel bag
5906076413728



Sleeping bag
5906076413773



Rain cover
5906076410475

For more information on our full range of accessories please visit www.consolor.co.uk, or contact our friendly team for advice.

Lightweight, easy to fold and equipped with the 'I GROW WITH YOU' system, Zefir offers both convenience and support whilst transporting your child.

Suitable for users
80-140 cm
Max. user weight 40 kg



Product Benefits:

- Adjustable backrest height & seat depth
- Narrowing inserts for additional stability/ growth
 - Reclining backrest
 - Adjustable footrest
- Rear wheel suspension
- Swivel front wheels with directional lock
- Lightweight folding frame
 - Central foot brake
 - Tip assist lever

Available colours



Zefir black frame
5906076414930

Grey - white/black frame

Seat width	29/38 cm	Total weight	13-16/13-18* kg
Seat depth	24/30 cm	Total length	96-111/98-113* cm
Backrest height	50/60 cm	Total height	100-136/ 102-138 cm
Footrest adjustable	20/30/40 cm	Total weight	60/62* cm
Folded dimensions	3 x W59 x H26 / L85 x W60 x H31 *with all terrain wheels		

Zefir Features



Angled seat
25° | 1 position



Reclining backrest
0°, 27° | 2 positions



Adjustable footrest
20, 30, 40 cm | 3 positions



'I GROW WITH YOU'
Seat depth up to 30 cm | Backrest height up to 60 cm



Seat adjustments
Narrowing inserts



Light folding frame
Easy to store and transport



Driving support
Rear suspension, central foot operated brake, tip assist lever



Zefir | Included Accessories



Headrest



Narrowing inserts



Abduction belt



Grab bar/ barrier



Foot brake, tip assist lever

Zefir | Additional Accessories



Canopy with window
5906076410710



Pommel
5906076410727



Travel bag
5906076410789



Sun Umbrella
5906076410741



Therapy tray
5906076410819



Winter gloves
5906076410765



Sleeping bag
5906076410772



Rain cover
5901122279860

For more information on our full range of accessories please visit www.consolor.co.uk, or contact our friendly team for advice.

VILA

Crash tested for use within transport, VILA is a convenient and lightweight buggy that offers a variety of adjustments to enhance comfort and stability for your child.



Suitable for users
80-130 cm
Max. user weight 40 kg



Product Benefits:

- Adjustable backrest height & seat depth
- Adjustable head, trunk & hip pads
 - Adjustable backrest width & seat depth
 - Reclining backrest
- Lightweight folding frame
- 4 wheel shock absorption

Available colours



Light blue (pictured)

5906076415043

Seat width	18/39 cm	Total weight	21-24 kg
Seat depth	23/33 cm	Total length	97-108 cm
Backrest height	66 cm	Total height	122-135 cm
Footrest adjustable	21-40.5 cm	Total weight	61 cm
Folded dimensions	L93 x W61 x H40-52 cm		

VILA Features



Seated position
59° | 1 position



Reclining backrest
20° | 1 position



Adjustable footrest
3 positions



Seat adjustments
Seat depth up to 33 cm | Seat width up to 39 cm



Light folding frame
Easy to store and transport



Driving support
Rear suspension, central foot operated brake,
tip assist lever

VILA | Included Accessories



5 point belt



Adjustable head, torso & hip pads



Abduction belt



Grab bar/ barrier



Foot brake, tip assist lever



Canopy with window

VILA | Additional Accessories



Sun Umbrella
5906076411465



Pommel
5906076415135



Travel bag
5906076414442



Shopping basket
5906076410734



Therapy tray
5906076415142



Winter gloves
5906076411540



Sleeping bag
5906076414718



Rain cover
5906076411441

For more information on our full range of accessories please visit www.consolor.co.uk, or contact our friendly team for advice.

Available in 5 sizes, the Delfi Pro is a dynamic seating system which grows with the user; offering excellent comfort and flexibility for kids and teens.



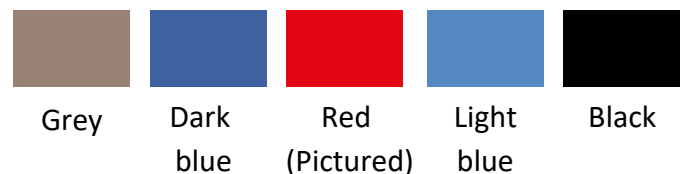
*pictured on a Guppy G2 base

Suitable for users
60-170 cm
Max. user weight 90kg

Product Benefits:

- Adjustable seat contours provide precise and stable positioning of the pelvis
- Integrated fully adjustable lumbar support for improved postural control
- Individually adjustable leg & pelvis supports
- Dynamic backrest allowing controlled movement and extension absorption
- Suitable for almost any manual or powered wheelchair base
- Wide range of accessories available

Available colours



Sizes	5	Axilla heights	24-50 cm
Abduction/adduction	+18/-9	Chest widths	17-31 cm
Max. user height	160 cm	Seat widths	18-36 cm
Max. user weight	90 kg	Seat depths	14-45 cm
Hip angles	-12/+26		

Key features

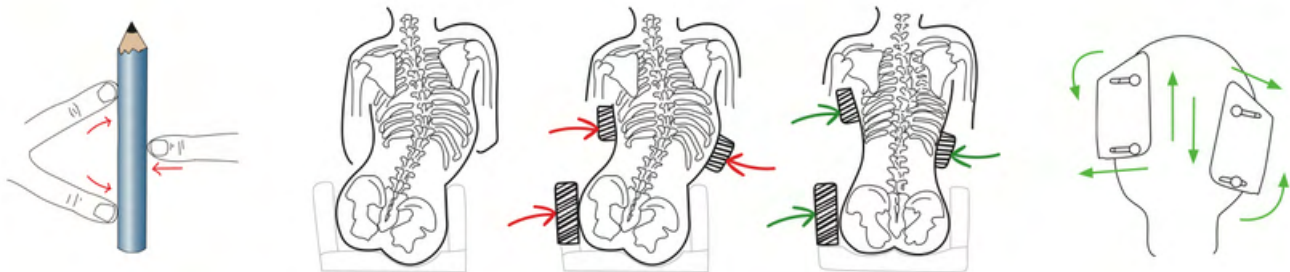
Positioning of the pelvis & legs

An integrated pelvic well with adjustable contouring helps facilitate activity, postural control, reduces shear and pressure under the pelvis. Leg sections of the Delfi Pro can be adjusted for adduction, abduction or windsweeping.



Positioning of the chest

Adjustable chest supports for better positioning of the body. Using 3 point correction and support principles, the Delfi Pro can support the body and align the spine and pelvis; enabling better head control and increasing opportunity for activity and alertness.



Dynamic seat system/ flex-joint

Equipped with a flex-joint to ensure controlled movement, variation and reduced effects of extension.



Specially designed to engage an active sitting position by strengthening balance and control, the Active G2 enables your child to participate in activities in a secure and comfortable upright position.



Suitable for users
100-185 cm
Max. user weight 90kg

Product Benefits:

- Ideal for use at school & during activities requiring an upright position
- Built in abductor to secure pelvis position & reduce sliding forward
 - Tilts and reclines for resting & initial positioning
- Dynamic back to support users with reduced muscle strength and/or extension
- Chest strap to secure upper body
 - Adjustable height backrest
 - Compatible with a range of high-low bases

Available colours



Black

Sizes	5	Back height	32-51 cm
User length	100-185 cm	Back profile length	39-63 cm
Max. user weight	90 kg	Hip angle adjustment	32°-38°
Seat depth	27-46 cm	Seat base angle	15° forward
Hip width	23-41 cm	Abduction	28°
Lateral width	20-32 cm (flexible +3cm with chest strap)		

Key features

Active sitting position

The active sitting position strengthens the user's balance and postural control. In this position, you sit in a 'rider's position (with the legs apart), encouraging you to raise your body and prevent it from collapsing. Similar to sitting on a horse, this position encourages you to sit with an upright, natural S shaped spine.



Integrated abductor

Secures pelvis in a neutral/ anterior position and discourages rearward tilt, flexing of the spine and sliding forward.

Resting position

Seat can be easily adjusted to a resting position by angling the backrest backwards and tilting the base.



Available in both manual and electric, the Flipper G2 indoor high-low base can have a variety of seating options fitted to it to suit your child's requirements.

Suitable for users
Max. load 130kg



*electric pictured

Product Benefits:

- Centred tilt to provide increased stability and better force
- Manual or electric height & tilt adjustment
 - Compatible with a wide range of seating systems
- Manual adjustment with foot pedal
- Suitable for larger users, with max. load of 130kg
 - Directional lock available

Available colours



Black

Sizes	size 2/ size 3/ size 4XL	Wheel standard	125 mm
Max. load weight	50kg/ 75kg/ 130kg	Total width	59/59/61 cm
Height adjustment	manual or electric	Total length	65/77/87 cm
Tilt adjustment	manual or electric	Seat height (min)	28/34/42 cm
Tilt angle	0° to 30°/ -5° to -25°	Seat height (max)	64/67/70 cm

Available in both manual and electric, the Flipper Flex G2 indoor/outdoor base can have a variety of seating options fitted to it to suit your child's requirements.



Suitable for users
Max. load 130kg

Product Benefits:

- Manual or electric height & tilt adjustment
- Centred tilt to provide increased stability & better force distribution on the chassis
- Compatible with a wide range of seating systems
- Adjustable driving bow
- Available with solid or pneumatic tyres
- Attendant brakes

*manual pictured

Available colours



Black

Sizes	1	Tilt angle	0° to 30° or -5° to -25°
Max. load weight	75 kg	Wheels	7" and 12/16"
Crash tested	75 kg	Total length	81 cm
Height adjustment	manual or electric	Seat height (min)	34 cm
Tilt adjustment	manual or electric	Seat height (max)	71 cm

Highly manoeuvrable, the Guppy G2 is a popular base which is compatible with a wide range of seating systems.

Suitable for users
Max. load 110kg

Product Benefits:

- Centred tilt to provide increased stability and better force
- Manual or electric height & tilt adjustment
 - Compatible with a wide range of seating systems
- Manual adjustment with foot pedal
- Suitable for larger users, with max. load of 130kg
 - Directional lock available



Available colours



Black

Sizes	4	Total width	51-55 cm
Max. load weight	75-110 kg	Total length	68-91 cm
Tilt angle	0° to 31° / -6° to 29°	Seat height (min)	46 cm
Wheels	16"/20"/22"/24"	Seat height (max)	50 cm

SEABASS G2

A pleasure to push, the Seabass G2 is suitable for use with larger seating systems.

Suitable for users
Max. load 135kg



Product Benefits:

- Adjustable seat depth
- Multiple wheel drive positions for optimum balance
- 5 different wheel sizes available
 - Quick release wheels
- Compatible with power assist add ons
- Suitable with most larger seating systems

Available colours



Black

Sizes	3	Total width	56-68 cm
Max. load weight	135 kg	Total length	69-77 cm
Tilt angle	0° to 35° / -7° to 28°	Seat height (min)	41/46 cm
Wheels	12"/16"/20"/22"/24"	Seat height (max)	19-20 cm

A modular hygiene solution, the Starfish Pro shower and toilet seat offers significant adjustability and postural support.



Suitable for users
Max. load 150kg

Product Benefits:

- Waterproof, comfortable and conforming lining covers whole seat surface
- Individually adjustable leg supports to accommodate abducted, adducted, windswept and difference in leg length
- Adjustable back angle to accommodate fixed hip flexion/extension
 - Tilt in space
- Height adjustable - manual, hydraulic or powered

Available colours



Blue

Sizes	3	Seat width	25-52 cm
Max. load weight	150 KG	Seat depth	30-55 cm
Tilt angle	-5° to -30°	Seat height	28-80 cm
Recline	10° to 35°		



Suitable for a range of more challenging terrains, the Telekinetic K2 and GTE is a great choice for your next adventure. With a 1m turning circle, it's also easy to use indoors and around town.

Suitable for users
Max. user weight 114kg



K2

GTE

Product Benefits:

- Available in Manual (K2) or Electric (GTE), with both user and attendant operated options
- Lightweight strong carbon fibre chassis
- Supportive and comfortable carbon fibre seat
- Easy to fold, with removable front wheels & rear castor folding down behind the seat
 - Vehicle use requires 5-point vehicle restraint system
 - Compatible with bespoke carved foam seating systems

Available colours

Seat shell available in over 200 colours!

Seat width sizes	40 cm or 48 cm	Chair height (std. leg)	78-84 cm
Max. user weight	114 kg	Chair height (long leg)	81-89 cm
Chair width (40cm)	70-75 cm	Chair length	120 cm
Chair width (48cm)	78-84 cm	Turning circle	1m
Manual chair weight	15.6 kg	Electric chair weight	34 kg

3D Printed Seating



Available in both standard formats or custom made, 3D-printed seating is constructed from a unique gyroid structure which delivers improved distribution of air-flow, temperature and moisture control.



Product Benefits:

- Programmable foam allows for varying areas of softness & hardness for precise pressure relief vs. support
- Highly durable with greater resilience to wear vs. traditional foam systems where repetitive movement is present
- Enhanced hygiene characteristics and washability through mesh design
- Removable and washable covers, available in a range of breathable spacer fabrics
- Compatible with a wide range of Consolor interfaces and wheelchair bases

How it's made:

For custom made solutions, one of our clinical seating specialists will undertake an assessment to capture the clients optimum postural position and anatomical contours, using our own unique design of Consolor Vacuum Cushions.

The vacuum formed shape is recorded via a digital scanner and manipulated digitally to determine the correct orientation of the backrest/cushion through to defining the exact outer shapes of the inserts. The final seat is then 3D-printed, using a unique gyroid structure to provide optimum temperature and moisture control.

Available fabrics & colours

Spacer Fabric - 100% Polyester



Black Blue Red Grey Purple

- Provides excellent air circulation & moisture wicking
- Fewer chances of creases appearing on contoured surface
- Comfort cushioning and shock absorption
- Machine washable & quick drying

WheelAir

Add active airflow to your seating system with WheelAir, an integrated cooling fan system which can be added to the majority of our seating systems for additional temperature and moisture control.

Product Benefits:

- Active airflow enables better self regulation of body temperature
- Even distribution of air across backrest and/or seat
 - Durable modular design
- Operated via wireless remote
 - 27hr battery life
 - 6 cooling settings
 - USB-C chargeable
 - Quiet airflow



Carved Foam Seating

Our completely custom made seating system tailored exactly to your child's individual needs; providing optimum comfort through precise pressure relief and postural support



Product Benefits:

- Precise shape replication to ensure safety & comfort at all times
- Excellent pressure management & weight distribution
- Different combinations of foam, memory foam, gel & air can be used to provide additional pressure relief
- Modular design to allow for easy adjustments to back & base
 - Optional swing away lateral support, flip down pommels & adjustable back widths
 - Specialist interface available to transfer seat between wheelbases
- Compatible with all indoor & outdoor bases
 - Removable covers for easy cleaning

Available fabrics & colours

Spacer Fabric - 100% Polyester



Black Blue Red Grey Purple

- Provides excellent air circulation & moisture wicking
- Fewer chances of creases appearing on contoured surface
- Comfort cushioning and shock absorption
- Machine washable & quick drying

Terrycloth Towelling - 100% Polyester



Black Grey Navy Royal Blue Purple Crimson Cerise

- Very soft, plush fabric with excellent stretch to conform to unique seating shapes
- Covers available as single layer for maximum stretch, or padded with 1/4" or 3/4" PU foam
- Versatile and durable
- Machine washable

Moulded Seating

Our lightest form of custom made seating, this versatile seat provides excellent corrective positioning, support and pressure management.



Product Benefits:

- Strong, firm seating system with great postural management capabilities
- Highly accurate shape replication to provide optimal comfort & correct positioning
- Different combinations of foam, memory foam, gel & air can be used for additional pressure relief
- Any shape can be achieved, therefore suitable for complex postural needs
- Optional flex-joint to offer a dynamic back for controlled movement & variation
- Standard interfacing adjustable for fine tuning reorientation of the seat
 - Specialist interface available to transfer seat between wheelbases
 - Removable covers for easy cleaning

Available fabrics & colours

Spacer Fabric - 100% Polyester



Black Blue Red Grey Purple

- Provides excellent air circulation & moisture wicking
- Fewer chances of creases appearing on contoured surface
- Comfort cushioning and shock absorption
- Machine washable & quick drying

Terrycloth Towelling - 100% Polyester



Black Grey Navy Royal Blue Purple Crimson Cerise

- Very soft, plush fabric with excellent stretch to conform to unique seating shapes
- Covers available as single layer for maximum stretch, or padded with 1/4" or 3/4" PU foam
- Versatile and durable
- Machine washable

SOLO

Our fully adjustable modular seating system, with unsurpassed pelvic control and stability built into the seat. Providing excellent postural alignment of the spine to maximise head control, position and function.

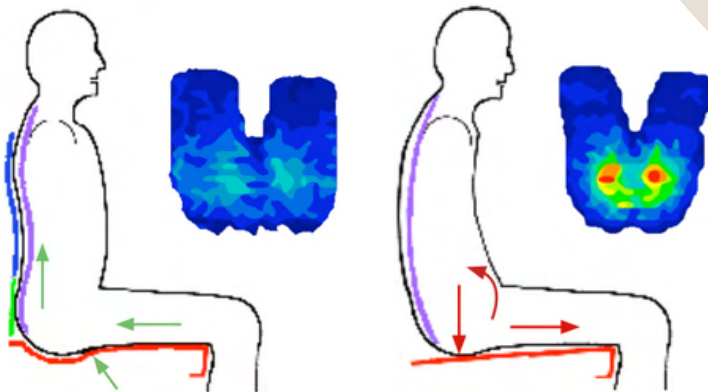


Product Benefits:

- Adjustable cushion shaping as standard, offering anterior pelvic support
 - Lateral adjustment of headrest position
 - Adjustable thoracic, pelvic & knee laterals
 - Adjustable sacral pad angle
- Adjustable harness & pelvic strap mounting positions
 - Removable pommel to limit adduction and align hips anatomically
- Adjustable pre-ischial bars under cushion change seat contours to maximise support & pressure relief
- Two part seat base adjustable up to 5cm leg length discrepancy
- Compatible with a wide range of wheelbases
 - Available in spacer fabric as standard

Anatomically shaped seat

Flat or ramped seat



Anatomically shaped seat relieves pressure, positions the pelvis neutrally and provides upright posture with a S shaped spine vs. a flat or ramped seat.

Sizes	6
Pelvic width range	20-53 cm
Seat depth range	17-53 cm
Shoulder height range	34-53 cm

Matrix & Lynx

Made of interlocking plastic ball and socket joints or slotted components which can be manipulated in any direction, these strong and highly adjustable seats offer excellent support and breathability.



Product Benefits:

- Firm supportive surface
- Available as a full seating system, or backrest only
- Highly adjustable to accommodate changes in shape & size
- Modular construction allows complex shapes to be formed
- Removable covers for easy cleaning
- Excellent air circulation & breathability

Available fabrics & colours

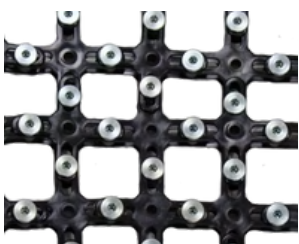
Spacer Fabric - 100% Polyester



Black Blue Red Grey Purple

- Provides excellent air circulation & moisture wicking
- Fewer chances of creases appearing on contoured surface
- Comfort cushioning and shock absorption
- Machine washable & quick drying

Lynx



Matrix



Flurve

Available in both standard and custom moulded formats, our Flurve armchair offers ultimate comfort and relaxation whilst still providing excellent postural support.

Custom Moulded



Product Benefits:

- Excellent pressure relief & postural management
 - Tilt in space
 - Reclining backrest
- Custom - precise shape replication using carved foam seating systems
- Custom - different combinations of foam, memory foam, gel & air can be used to provide required levels of pressure relief
- Range of colours available in breathable spacer fabric (seating) & vinyl (exterior)



Standard format

Available fabrics & colours

Spacer Fabric - 100% Polyester



Black Blue Red Grey Purple

- Provides excellent air circulation & moisture wicking
- Fewer chances of creases appearing on contoured surface
- Comfort cushioning and shock absorption
- Machine washable & quick drying

Purchasing your new seating or mobility system

When it comes to purchasing your new seating or mobility system there are a number of funding options which may be available to you.

You may use one or a combination of the funding options below, depending on your requirements and eligibility (as determined by the funding provider).

Wheelchair services

(NHS & privately commissioned services)

Wheelchair services will fund a mobility solution free of charge (paid for by the NHS) that suits your needs in as many scenarios as possible. Typically this would be a wheelchair or similar mobility system.

Product choice is determined by the NHS budget allowance, the recommendation of your Wheelchair Service Therapist and our Consolor clinical seating specialist.

Personal Wheelchair Budget*

Alternatively, you are legally entitled to a Personal Wheelchair Budget.

This monetary amount, equal to the product cost that would have been provided by the Wheelchair Services, could be put towards an alternative product which is not offered by the NHS. For example due to cost or your desired product being determined as over and above your clinical requirements.

If the product you wish to purchase is more expensive than the monetary amount you are entitled to, you may use the Personal Wheelchair Budget plus one of the alternative funding options below.

** This information is intended as a brief guide only, for more detailed information on Personal Wheelchair Budgets and specifically in relation to your personal circumstances please contact your Wheelchair Service directly for their terms and conditions.*

Private funding

Products can be purchased in part or in full using private funding sources e.g. personal finances.

Charity funding

It is also possible to apply to a number of charitable organisations for funding support.

This might be to cover the whole cost of the product, or to be used in combination with another funding source e.g. Personal Wheelchair Budget.

Product choice will be reviewed by the charity and provision of funding is subject to their approval. The process and criteria for approval will be individual to each charity.

For more guidance on funding and recommended charitable organisations speak to your Wheelchair Service Therapist, Consolor clinician or our friendly customer service team.



01202 827650

admin@consolor.co.uk

www.consolor.co.uk

Notes

Notes



Contact us:

01202 827650
admin@consolor.co.uk
www.consolor.co.uk