

QS5X



CE

ORDER FORM

Errors and imissions excepted.

Billing Address Or Customer-ID				Shipping Address		Identical To Billing Address	
C.-ID:				C.-ID:			
Name:				Name:			
Street:				Street:			
Town/PC:				Town / PC:			
E-Mail:				E-Mail:			
Phone:				Phone:			
Order Information				User Weight			
Order	Calculation	Built-4-Me®		Max. user weight 140 kg			
Purchase Order No.:				Art. No.: 71200000 / 71200001 IC			
Order Date:	Day	Month	Year	User Weight:	kg		

Base Price QS5 X

£1,750

Client Measurements all measurements without cushion

Seat Width measured from outside frame tube to outside frame tube

(mm)	340	360	380	400	420	440	460	480	500
	520	540							

Seat Depth

(mm)	340	360	380	400	420	440	460	480	500
------	-----	-----	-----	-----	-----	-----	-----	-----	-----

Front Seat Height Selection in dependence of front castors and frame versions

Fork Type (mm)	360	370	380	390	400	410	420	430	440	450	460	470	480	490	500	510	520	530	540
4"																			
Hemi Version (Alu 115/158 mm)							-			-	-	-	-	-	-	-	-	-	-
One arm fork (105 mm)	-	-	-	-	-	-					-	-	-	-	-	-	-	-	-
Aluminium (115 mm)	-	-	-	-	-	-	-					-	-	-	-	-	-	-	-
Aluminium (131 mm)	-	-	-	-	-	-	-	-						-	-	-	-	-	-
Aluminium (158 mm)	-	-	-	-	-	-	-	-	-	-	-					-	-	-	-
5"																			
Hemi Version (Alu 115/158mm)	-	-	-	-	-	-	-				-	-	-	-	-	-	-	-	-
Aluminium (115 mm)	-	-	-	-	-	-	-	-	-				-	-	-	-	-	-	-
One arm fork (105 mm)	-	-	-	-	-	-	-	-				-	-	-	-	-	-	-	-
Aluminium (131 mm)	-	-	-	-	-	-	-	-							-	-	-	-	-
Aluminium (158 mm)	-	-	-	-	-	-	-	-	-	-	-							-	-
6"																			
Hemi Version (Alu 115/158 mm)	-	-	-	-	-	-	-					-	-	-	-	-	-	-	-
Aluminium (131 mm)	-	-	-	-	-	-	-	-	-	-	-					-	-	-	-
Aluminium (158 mm)	-	-	-	-	-	-	-	-	-	-	-	-							-
7"																			
Aluminium (158 mm)	-	-	-	-	-	-	-	-	-	-	-	-	-						

Hemi version only with SA frame - upcharge for QSC080101 will apply.

Rear Seat Height Selection in dependence of rear wheel size

Rear seat height in mm	350	360	370	380	390	400	410	420	430	440	450	460	470	480	490	500	510	520
22"															-	-	-	-
24"	-	-															-	-
25"	-	-	-	-	-	-	-	-										-
26"	-	-	-	-	-	-	-	-	-	-								

The rear seat height can only be between 0 mm and 110 mm below the selected front seat height.

Seat Upholstery and Cushions

£

Seat sling		
QSC020014	Seat sling, nylon, 1 utility bag	0
QSC020000	Without seat sling	0
Seat cushion, cover with zipper, black		
QSC020101	Seat cushion, foam (medium-soft), cover with zipper, black, 30 mm	84
QSC020102	Seat cushion, foam (medium-soft), cover with zipper, black, 50 mm	84
QSC020103	Seat cushion, Latex (very soft), cover with zipper, black, 50 mm	84
JAY Cushions – for complete product range see JAY order forms		
JAY020002	JAY Basic	73
JAY020001	JAY Easy Visco C	177
JAY020007	JAY Easy Fluid	406
JAY020004	JAY Lite	286
Seat accessories		
QSC090018	Lap belt with buckle, metal	73

Backrest

£

Backrest height range		250 - 300	300 - 350	350 - 400	400 - 450	450 - 500		
Back height set at (mm)								
		250	300	350	400	450		
		275	325	375	425	475		
		300	350	400	450	500		
QSC030010	Backrest, fixed (90°)						0	
QSC030111	Lumbar curve 5° (to the front)						52	
QSC030110	Lumbar curve 5° (to the back)						52	
QSC030101	Backrest, half-folding (to the back) Available from backrest height 375mm, only with push handles, medium. Not with stabilizing bar or headrest						208	
QSC030031	Backrest, fold-down (to the front) Only available from backrest height 350mm, only with push handles, medium or push handles, fold-down. Not with stabilizing bar, headrest or JAY SHAPE, please see matrix on foldability on page 7						208	
QSC030012	Backrest, angle-adjustable (70 - 105°) not with backrest height 500 mm						68	
		75°	80°	85°	90°	95°	100°	105°

Push handles

QSC030201	Push handles, Medium	0
QSC030231	Push handles, Long +30 mm in length, not in combination with folding backrest (to the rear/ to the front)	52
QSC030203	Push handles, fold-down Not in combination with backrest, half-folding (to the back), not in combination with R20, only from back height 300 mm, not with JAY SHAPE	94
QSC030204	Push handles, height-adjustable Not in combination with backrest, half-folding (to the back), not in combination backrest, fold-down (to the front), only from back height 300 mm, not in combination with R20	219
QSC030205	Push handles, height-adjustable for JAY backs Not in combination with backrest, half-folding (to the back), not in combination backrest, fold-down (to the front), only from back height 300 mm, not in combination with R20	219
QSC030200	Without push handles Not in combination with backrest, half-folding (to the back), not in combination backrest, fold-down (to the front), not in combination with R20	0

Backrest upholstery (black)						
QSC030316	EXO Backrest sling, synthetic fibre, padded, adjustable, 1 accessory bag, black (EXO Evo version)					0
	Colour binding tape:	Black	Orange	Silver	Red	Blue
QSC030317	EXO PRO Backrest sling, padded, adjustable, breathable, spacer fabric, 1 accessory bag, black (EXO Evo version)					94
	Colour binding tape:	Black	Orange	Silver	Red	Blue
QSC030000	Without backrest upholstery					0

JAY Shape backrest		
JAY080001	JAY SHAPE Back SW 360 - 500 mm, from BH 375 mm, from RSH 440 mm, not in combination with backrest fold down to the front	255
JAY080011	JAY SHAPE Lateral supports 10 x 12 (Pair) not in combination with backrest fold down to the front	255
JAY080010	JAY SHAPE Lateral supports 15 x 15 (Pair) not in combination with backrest fold down to the front	255

Backrest accessories		
QSC030402	Stabilising bar, automatic folding Not in combination with backrest, half-folding to the front and to the back	156
QSC030410	Headrest, tall height, depth and angle-adjustable, 230 x 110 mm Not in combination with backrest, half-folding (to the back), not in combination with backrest, fold-down (to the front), only with push handles height adjustable (QSC030204, QSC030205)	255
QSC030411	Headrest, medium height, depth and angle-adjustable, 200 x 110 mm Not in combination with backrest, half-folding (to the back), not in combination with backrest, fold-down (to the front), only with push handles height adjustable (QSC030204, QSC030205)	255

JAY BACKS plus ACCESSORIES max . user weight 136 kg £

JAY J3 Back - Mid Deep Contour (150 mm contour depth)		Medium (M)	
Mid Thoracic	JAY030044	340 mm	827
Upper Thoracic	JAY030042	460 mm	827
JAY J3 Back, Deep Contour			
Upper Thoracic	JAY030021	460 mm	827
WHT030415	Whitmyer Headrest, COBRA XTRA, flip back only with JAY J3 backs		338
WHT030416	Whitmyer Headrest, AXYS, Standard only with JAY J3 backs		338

Armrests & Sideguards

£

Armrest Not in combination with 4° camber.		
QSC040052	Single-post sideguard, armpad (330 mm), depth adjustable, tool height-adjustable, removable	0
	Single post height adjustable amrest	
QSC040050	Single-post sideguard, armpad (250 mm), height-adjustable, removable	188
QSC040051	Single-post sideguard, armpad (360 mm), height-adjustable, removable	188
Desk Sideguard		
Not in combination with 4° camber.		
Combination of Half-folding backrest (QSC030101 and QSC030031) and desk sideguard only possible for backrest heights above 400 mm.		
QSC040005	Desk sideguard, flip-up, removable	156
QSC040144	Armpad for hemiplegic XL (length: 540 mm, width: 135 mm), left	156
QSC040145	Armpad for hemiplegic XL (length: 540 mm, width: 135 mm), right	156
QSC040146	Armpad for hemiplegic (length: 460 mm, width: 105 mm), left	156
QSC040147	Armpad for hemiplegic (length: 460 mm, width: 105 mm), right	156
QSC040001	Desk sideguard, armpad (250 mm), fixed, flip-up, removable	156
QSC040144	Armpad for hemiplegic XL (length: 540 mm, width: 135 mm), left	156
QSC040145	Armpad for hemiplegic XL (length: 540 mm, width: 135 mm), right	156
QSC040146	Armpad for hemiplegic (length: 460 mm, width: 105 mm), left	156
QSC040147	Armpad for hemiplegic (length: 460 mm, width: 105 mm), right	156
QSC040003	Desk sideguard, armpad (310 mm), fixed, flip-up, removable	156
QSC040144	Armpad for hemiplegic XL (length: 540 mm, width: 135 mm), left	156
QSC040145	Armpad for hemiplegic XL (length: 540 mm, width: 135 mm), right	156
QSC040146	Armpad for hemiplegic (length: 460 mm, width: 105 mm), left	156
QSC040147	Armpad for hemiplegic (length: 460 mm, width: 105 mm), right	156
QSC040002	Desk sideguard, armpad (250 mm), height-adjustable, flip-up, removable	156
QSC040004	Desk sideguard, armpad (310 mm), height-adjustable, flip-up, removable	156
QSC040117	Tubular armrest. Alu, swing away, padded, removable can be combined with sideguards QSC040102 /3 / 4 /7	167
Sideguards		
QSC040107	Sideguard, composite, removable, 210 mm high (310 mm long), black	0
QSC040102	Sideguard, aluminium , cold weather protection (in frame colour) (width between sideguards is SW +20 mm)	99
QSC040103	Sideguard, aluminium , fender, cold weather protection (in frame colour) (width between sideguards is SW +20 mm)	156
QSC040104	Sideguard, carbon fibre, fender, cold weather protection (black) (width between sideguards is SW +20 mm)	260
Trays		
Slide on tray		
QSC090011	Tray, push-fit only for SW 380 mm to 480 mm, only in combination with Desk sideguard QSC040004 or Single post sideguard, armpad QSC040052	177
QSC90046	Half side Tray, swing away only in combination with Desk sideguard QSC040004	177
	assembly left	
	assembly right	
Swing away tray		
only in combination with Desk sideguard QSC040004 or Single post sideguard, armpad QSC040052		
QSC090012	Tray, swing-away (to the side), SW 340 - 600 mm, left-mount	177
QSC090013	Tray, swing-away (to the side), SW 340 -600 mm, right-mount	177

Frame		£
QSC010010	Frame FF 75° (integrated footrest) (EU: 105°) not in combination with QSC080101 Expansion kit, designed for hemiplegic users and the Hemi front seat-heights indicated on page 1	0
QSC010011	Frame FF 85° (integrated footrest) (EU: 95°) not in combination with QSC080101 Expansion kit, designed for hemiplegic users and the Hemi front seat-heights indicated on page 1	0
QSC010016	Frame FF 85° (integrated footrest), inset (20 mm on each side), active (EU: 95°) not in combination with QSC080101 Expansion kit, designed for hemiplegic users and the Hemi front seat-heights indicated on page 1	0
QSC010015	Frame SA (removable footrest)	0
QSC090102	With crash test option ISO 7176-19:2022 approved as seat in a vehicle	0

Centre of Gravity (COG) measured from front of back post; choose only one option		£
COG25	Centre of gravity 25 mm	0
COG40	Centre of gravity 40 mm	0
COG50	Centre of gravity 50 mm	0
COG60	Centre of gravity 60 mm	0
COG75	Centre of gravity 75 mm	0

Frame Accessories		£
QSC090010	Transit wheels Not with crutch holder, tip assist and anti tip	245
Tip assist (step tube) & Crutch holder		
QSC090001	Tip assist, left	37
QSC090002	Tip assist, right	37
QSC090003	Tip assist, pair not in combination with anti-tip	73
QSC090009	Crutch holder, loop only in combination with tip assist	84
Anti-tip tubes, swing-away		
QSC090004	Anti-tip tubes, swing-away, left	130
QSC090005	Anti-tip tubes, swing-away, right	130
QSC090006	Anti-tip tubes, swing-away, pair not in combination with tip-assist	203
QSC090036	Anti-tip tubes, aluminium, lightweight, swing-away (forwards), pair not with tip assist	94
QSC110156	Twin LED Light	156
QSC010056	Auto folding fixation the Fold-N-Lock mechanism keeps the wheelchair locked in folded position	0
QSC010057	Touch points ergonomic rubber cover on the front frame tubes, only for FF frames	0

Hangers & Footplates		£	
Aluminium hanger			
QSC050002	Hanger angle 70° (EU: 110°)	0	
QSC050001	Hanger angle 80° (EU: 100°)	0	
QSC050041	Hanger angle 90° (EU: 90°)	0	
QSC050006	Hanger, aluminium, swing-away, LH	QSC050007 Hanger, aluminium, swing-away, RH	0
pick both	Hanger, aluminium, swing-away, Pair	0	
Composite hanger			
QSC050002	Hanger angle 70° (EU: 110°)	0	
QSC050001	Hanger angle 80° (EU: 100°)	0	
QSC050003	Hanger, composite, swing-away, LH	QSC050004 Hanger, composite, swing-away, RH	0
pick both	Hanger, composite, swing-away, Pair	0	

Elevating Legrest (ELR)		
QSC050009	Hanger, aluminium, flip-up (0° - 90°), swing-away, LH only in combination with footboard divided, aluminium or composite	162
QSC050010	Hanger, aluminium, flip-up (0° - 90°), swing-away, RH only in combination with footboard divided, aluminium or composite	162
pick both	Hanger, aluminium, flip-up (0° - 90°), swing-away, Pair only from SW 38, only in combination with footboard divided, aluminium or composite	
Amputee Support Pad		
QSC050014	Amputee support, left	162
QSC050013	Amputee support, right	162
QSC050012	Amputee support, pair	324
Footplate		
QSC050020	Footboard, divided, composite, angle-adjustable, flip-up (sideways), heel loop, black	0
QSC050050	Footboard, divided, aluminum, angle-adjustable, flip-up (sideways), heel loop, black from LLL 360 mm	156
QSC050102	Footboard, platform, aluminum, angle-adjustable, flip-up (sideways), heel loop, black not in combination with ELR	156
QSC050126	Swing-away mechanism for platform footboard from LLL 380 mm	104
QSC050062	Locking system, platform footplate, aluminium	78
Platform footrest, angle adjustable		
only up to seat width 500 mm		
QSC050131	Footboard, platform, lightweight, composite, angle & depth-adj. flip up (sideways), calf strap, black not in combination with ELR	156
QSC050132	Footboard, platform, lightweight, carbon fibre, angle & depth-adj. flip up (sideways), calf strap, black not in combination with ELR	240
QSC050127	Adjustable side protection, to create a side-stop on the footboard only in combination with Platform footrest	26
Autofolding		
only up to seat width 500 mm		
QSC050028	Footboard, platform, lightweight, composite, auto-folding, angle & depth-adj., calf strap, black not in combination with ELR and SA frame	312
QSC050027	Footboard, platform, lightweight, carbon fibre, auto-folding, angle & depth-adj., calf strap, black not in combination with ELR and SA frame	479

Lower Leg Length LLL in mm, Attention: LLL has to be 30 mm lower than seat height front

340	350	360	370	380	390	400	410	420	430	440
450	460	470	480	490	500					

Fork compare with your choice on the first page

£

QSC080029	Castor fork, Aluminium, black (anodized)	0
QSC080042	Colour Cast. Fork Silver (anodized)	
QSC080064	Castor fork Aluminium Powder coated	0
	Colour Cast. Fork Red Ruby (21)	
	Colour Cast. Fork Marsred (37)	
	Colour Cast. Fork White (32)	
	Colour Cast. Matt Marine (16)	
QSC080008	Castor fork, aluminium, one-arm. Standard colour: black	224
	Orange	
	Silver	
	Red	
	Blue	
QSC080101	Expansion kit, designed for hemiplegic users Lower and wider caster-links to achieve lower seat heights; not with 7" casters; SA frame only	141

Castor compare with your choice on the first page £

QSC080301	Castor, solid (hard), rim: composite, black	0
QSC080302	Castor, solid (soft), rim: composite, black only for 5" & 6" castors	0
QSC080305	Castor, pneumatic, rim: composite, black only for 5" & 6" castors	0

Castor with aluminium rim

QSC080304	Castor, solid (hard), rim: aluminium only for 4" & 5" castors	52			
QSC080306	Castor, solid (soft), rim: aluminium, silver only for 4" & 5" castors	52			
	Colour rim:	Black	Orange	Red	Blue

Rear Wheels compare with your choice on the first page £

QSC070000	Without rear wheel	0
QSC070001	Rear wheel, Universal, 36 spokes (silver), cross-wise spokes not in 25"	0
QSC070002	Rear wheel, Design, 36 spokes (silver), straight spokes only 24"	0
QSC070003	Rear wheel, Lightweight, 24 spokes (silver), straight spokes not in 26", max. user weight: 125 kg	94
QSC070004	Rear wheel, Proton, 24 spokes (black), straight spokes not in 26", max. user weight: 100 kg	260
QSC070005	Rear wheel, Spinergy, 18 spokes (black), straight spokes; hub: silver only 24"/25"	515
QSC070007	Rear wheel, Spinergy, 12 spokes (black), straight spokes, hub: black only 24"/25"	619
QSC070008	Rear wheel, drum brakes, 36 spokes (silver), cross-wise spokes only 22"/24"	442
QSC070009	Rear wheel, Mountainbike, 36 spokes (silver), straight spokes only 24"	375

One-hand operation

QSC070401	Rear wheel, one-hand operation, 36 spokes, cross-spoked, left actuation	832
QSC070402	Rear wheel, one-hand operation, 36 spokes, cross-spoked, right actuation	832

Tyres choose only one tyre type £

QSC070101	Tyre, pneumatic, fine profile, Schwalbe Right Run not with 25"	0
QSC070102	Tyre, puncture proof, tread only 24"/25"	0
QSC070107	Tyre, pneumatic, slick, Schwalbe One not with 26"	52
QSC070104	Tyre, pneumatic, puncture proof, tread, Schwalbe Marathon Plus Evolution not with 22"	99
QSC090163	Spares-kit: 1 extra tyre (same as on the chair) and 1 extra inner tube not with QSC070102 tyre, puncture proof	99

Handrims £

QSC070202	Handrims, aluminium, anodised, silver	0
QSC070201	Handrims, aluminium, powder-coated, clear	0
QSC070203	Handrims, aluminium, powder-coated, coloured	0
QSC070204	Handrims, stainless steel, silver	104
QSC070207	Handrims, Supergrip® 22" only with universal rear wheel and drum brake wheels	260
QSC070208	Handrims, Maxgrepp® only 22"/24"	364
QSC070212	Handrims, Ellipse 3R, black ergonomic handrims with rubber-strip, 24" and 25" only	130
QSC070200	Without handrims	0

Handrim mounting

QSC070307	Handrim mount, super narrow (7 mm) only with 24" stainless steel	0
QSC070317	Handrim mount, narrow (17 mm)	0
QSC070327	Handrim mount, wide (27 mm) not with Maxgrepp	0

Handrim cover

QSC070251	Handrim cover, Silicon not with 25"/26", Supergrip, Maxgrepp, Ellipse	115
-----------	--	-----

Wheel Camber

QSC070600	0°	0
QSC070602	2°	0
QSC070604	4°	0

Spoke Guards not with spinergy wheels, not with 25", not with mountainbike wheel £

QSC070831	Transparent not with 25"					156
QSC070822	Pool	QSC070820	Oriental			156
QSC070811	Feather	QSC070817	Hot Wheels	QSC070802	Basketball	156
QSC070814	Graffiti	QSC070806	Chrome	QSC070827	Silk	156
QSC070828	Space	QSC070812	Flying Water	QSC070803	Basketball 2	156

not with 25" and 26"

Wheel Locks choose only one option £

QSC060001	Standard brake					0
QSC060002	Knee-lever brake					99
	QSC060010	Brake lever extension, knee-lever brake, fold-down				52
QSC060023	Compact brake EVO					68
QSC060015	Push to lock brake, one-arm, left actuation					208
QSC060016	Push to lock brake, one-arm, right actuation					208

Accessories £

QSC090000	Tool kit					0
QSC090025	Air pump					21
QSC090024	High pressure pump (0 - 11 bar)					94
QSC090030	Back pack					78
QSC090026	Mobile phone pocket					58

Frame Colours Handrim: only with handrim colour powder coated; Hub/rim: only for universal wheel 22" or 24"

	Frame	Handrim	Hub / Rim		Frame	Handrim	Hub / Rim
01 Matte Black				17 Turbo Green			
02 Gloss Black				20 Mystic Purple			
03 Metallic Shadow				22 Velocity Yellow			
04 Starlight White				09 Salute Green			
05 Silver Ore				10 Velvet Sapphire			
06 Storm Gray				13 Brilliant Ocean			
07 Desert Tan				16 Cherry Lustre			
08 Desert Sage				18 Pink Power			
11 Midnight Blue				19 Satin Rose			
12 Royal Blue				21 Solar Orange			
14 Scarlet Noir				15 Red Pepper			
		78	204			78	204

Sticker Colours £

QSC100550	Black					0
QSC100551	Silver					0
QSC100552	Orange					0
QSC100553	Red					0
QSC100554	Blue					0

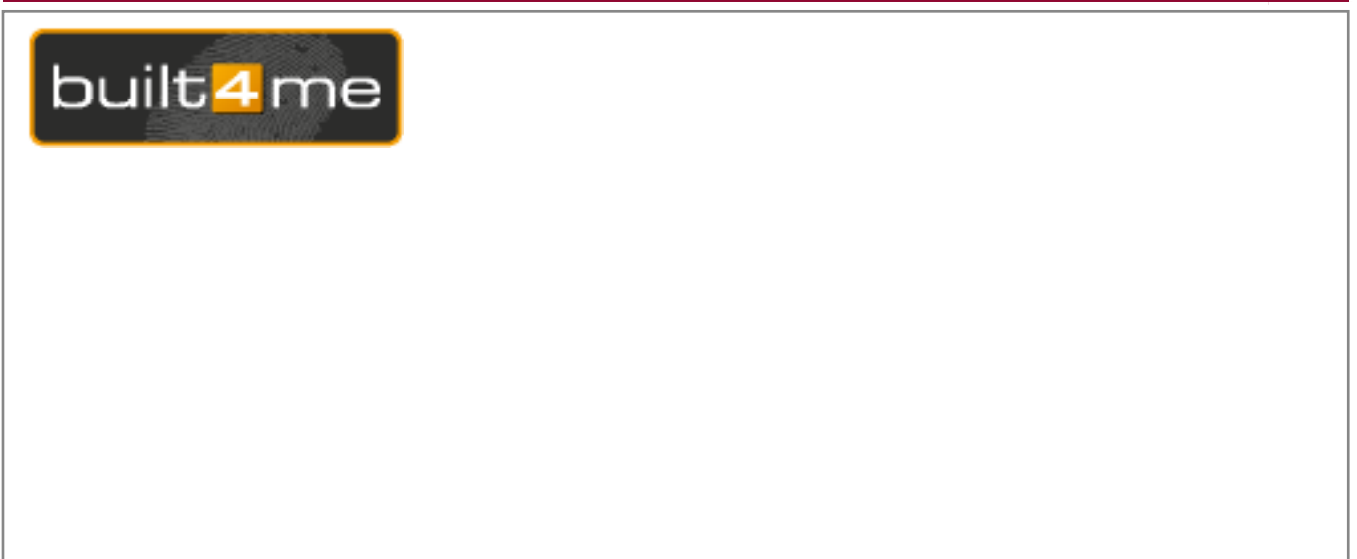
Cross brace and Footboard Colours £

QSC100587	Cross brace in frame colour	0
QSC100588	Footboard alu in frame colour only with aluminium footboards QSC050050 and QSC050102	0

24 " Light Weight Wheel Colours Hub and rim £

	Black	0
QSC100336	Anodized, orange	0
QSC100337	Anodized, blue	0
QSC100338	Anodized, red	0

Comments



Quickie QS5 X £

Base Price	00,000.00
Option Price	
Packaging And Transport	
Exclusive VAT	
VAT	
Total Price	

Date | **Signature**

Day Month Year



Sunrise Medical UK

Thornd Road, Brierley Hill
 DY5 2LD
 Phone: 0845 605 6688
 E-Mail: enquiries@sunmed.co.uk
 www.SunriseMedical.co.uk

Please follow this measuring method:

The following method is recommended on the basis of extensive practical experience. Deviations are possible in individual instances.

Seat width (SW):

- a) For the user: Allow space between sideguard and hip on each side of the chair (approx. 10 - 20 mm altogether).
- b) On the wheelchair: From outside frame tube to outside frame tube.

Seat depth (SD):

- a) For the user: When sitting upright: leave space for 2 - 3 fingers between front edge of the seat upholstery and back of knee (approx. 30 - 60 mm). Care must be taken with adjustable upholstery.
- b) On the wheelchair: From back tube to front of seat upholstery.

Front seat height:

- a) For the user: When sitting with 90° kneeangle: From back of knee to bottom of shoe sole.
- b) On the wheelchair: From front edge of the seat-upholstry, next to the seat-tube to the ground (min. 30 mm longer than user measurement). Remember to include the cushion height.

Rear seat height:

On the wheelchair: From rear edge of the seat-upholstery, next to the seat-tube to the ground.

Note: Maximum seat height difference rear to front is 110 mm.

Back height:

- a) For the user: From the seat, including cushion, to be no more than 10 - 20 mm below the lower shoulder blade.
- b) On the wheelchair: From top of the seat-upholstery to upper edge of backrest upholstery.

Note: The user's ability to sit upright has a major influence on the back height and it can therefore differ considerably.

Back angle:

Backrest-angle is measured in relation to the seat. 90°= perpendicular to the seat.

Technical Data

Max. overall height:	1020 mm	Max. overall width with:	24" Rear wheel	25" Rear wheel
Max. overall length:	1113 mm	For 0° camber:	SW + 180 mm	SW + 180 mm
Max turning circle:	1512 mm	For 2° camber:	SW + 230 mm	SW + 240 mm
Overall weight:	from 10,1 kg (SA); 9,9 kg (FF)	For 4° camber:	SW + 260 mm	SW + 270 mm
Weight of heaviest detachable part:	2,2 kg			
Transport weight (without rear wheels):	from 7,5 kg (SA); 7,3 kg (FF)			
Max. safe slope (with wheels locked):	10° (7°)			

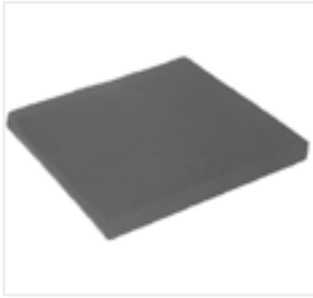
Please note that options such as i.e. armrest-sideguards or drum brakes can increase the overall width of the wheelchair.

Please note that in certain configurations the wheelchair may exceed a width of 700 mm. If this is the case, under certain circumstances, it may not be possible to use some or all of the available escape routes from a building. It may be more difficult or impossible to travel on public transport.

This product has been crash-tested according to ISO 7176-19:2022 and is allowed as seat in a vehicle if the option QSC090102 is chosen.

Manufacturing tolerances can be +/- 10 mm on all configurations

Seat Upholsteries & Cushions



// QSC020101-QSC020102
Seat cushion, cover with zipper, black



// QSC090018
Lap belt with buckle, metal



// JAY020002
JAY Basic (pictured without cover)



// JAY020001
JAY Easy Visco (pictured without cover)



// JAY020007
JAY Easy Fluid (pictured without cover)



// JAY020004
JAY Lite (pictured without cover)

JAY J3 Backs more JAY products available on separate JAY order forms



150/280 mm



// JAY J3 Back
Mid Deep Contour



250 mm



// JAY J3 Back
Deep Contour

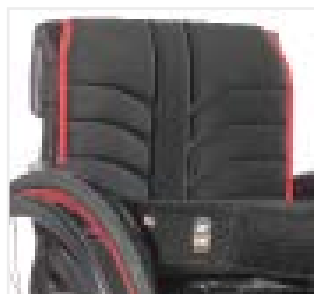
Backrest



// QSC030012
Angle adjustable back



// QSC030031
Backrest, fold down (to the front)



// QSC030316
EXO backrest sling (EXO Evo version)



// QSC030317
EXO PRO backrest sling (EXO Evo version)



// QSC030201
Push handles, Medium



// QSC030231
Push handles, Long



// QSC030203
Fold down push handles

// Matrix of Backrest, fold-down (to the front) with Standard Push handle

		Back height						
		350	375	400	425	450	475	500
Seat width	340							
	360							
	380							
	400							
	420							
	440							
	460							
	480							
	500							
	520							
540								

- folds 90° to the front on folded chair
- can't be folded full 90° to the front on folded chair in combination with fold-down pushhandles
- can't be folded full 90° to the front on folded chair

// Matrix of Backrest, half-folding (to the back) with Fold Down Push handle

		Back height						
		350	375	400	425	450	475	500
Seat width	340							
	360							
	380							
	400							
	420							
	440							
	460							
	480							
	500							
	520							
540								

Sideguard & Armrest



// QSC040050-QSC040051
Single post height adjustable armrest



// QSC040052
Single-post sideguard, depth adjustable, tool height-adjustable



// QSC040107
Sideguard composite detachable



// QSC040104
Sideguard carbon with fender



// QSC040103
Sideguard alu with fender



// QSC040002
Desk armrest, height adjustable, short armpad (250 mm)



// QSC040001
Desk armrest, fixed height, short armpad (250 mm)



Desk armrest without armpad

Frame



// QSC010015 QS5 X SA



// QSC010011 QS5 X FF 85°



// QSC010010 QS5X FF 75°



// QSC010016 Frame FF 85° (integrated footrest), inset (20 mm on each side), active



// QSC090102
Crashtest Option

Frame Accessories



// QSC090010
Transit wheels



// QSC090001-QSC090003
Tip assist



// QSC090009
Crutch holder



// QSC090004-QSC090006
Anti-tip swing away



// QSC050041
Aluminum hanger, 90°



// QSC050002-QSC050001
Composite hanger 70°/80°



// QSC050009-QSC050010
Elevating legrest



// QSC050012-QSC050014
Amputee Support Pad



// QSC050131
Platform footplate lightweight angle & depth adjustable composite flip up



// QSC050132
Footboard platform, lightweight, carbon fibre, auto folding



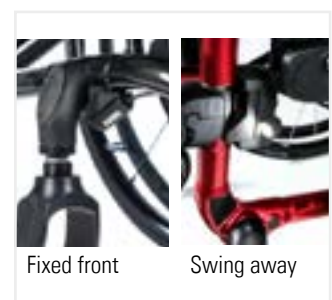
// QSC050020
Divided footplate composite



// QSC050050
Divided footplate aluminum



// QSC050102
Platform, angle and depth adjustable; flip up, aluminium with locking system



// QSC110156
Twin LED Light

Forks



// QSC080064 Castor fork
Aluminium Powder coated



// QSC080101 Expansion kit, designed for hemiplegic users

Rear Wheels



// QSC070001
Universal cross-spoked



// QSC070002
Design wheel



// QSC070003
Lightweight wheel



// QSC07005
Spinergy wheel, 18 spokes



// QSC070008
Drum brake wheel



// QSC070401-2
Rear wheel, one-hand operation, 36 spokes, cross-spoked

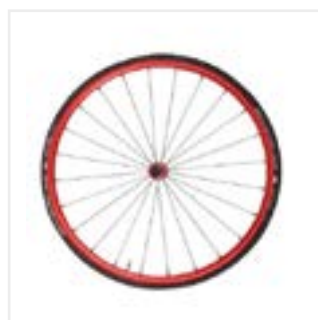
24 " Light Weight Wheel Colours



// QSC100336
Lightweight wheel, anodized orange



// QSC100337
Lightweight wheel, anodized blue

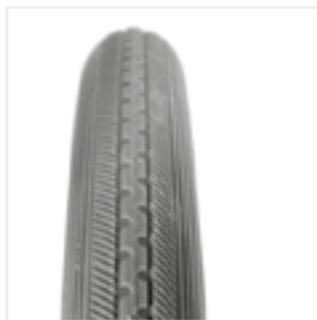


// QSC100338
Lightweight wheel, anodized red

Tyres & Handrims



// QSC070101
Right Run Tyre



// QSC070107
Solid Tyre



// QSC070104
Marathon Plus Evolution



// QSC070207
Supergrip



// QSC070208
Max Grepp



// QSC070212
Ellipse 3R Handrim

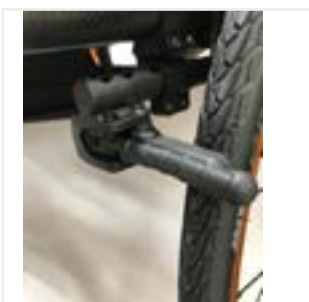
Wheel Locks



// QSC060002
Knee lever wheel lock



// QSC060010
Brake lever extension



// QSC060023
Compact brake EVO



// QSC060001
Standard brake

Accessories



// QSC090030
Back pack



// QSC090024
High pressure pump



// QSC090025
Air pump



// QSC090026
Mobile phone pocket