

Base price: £4455.00

Order no.:

Provide estimate only

Order

Attachment for custom fabrication enclosed

Billing address/customer number

Delivery address

Sales person

Name

.....
Date Signature

By placing the order, you agree to comply with the instructions for use/service manuals for accessories and products of other manufacturers when combining them with an Ottobock product, in addition to the instructions for use/service manuals of the respective Ottobock products. Also you confirm to have read, understood and accepted, our general terms and conditions. In addition, you agree, upon placing an order, to conduct your own conformity assessment or approval in accordance with national requirements if and when you implement modifications or attachments that do not meet the specifications of Ottobock instructions for use/service manuals.

Skippi

Power wheelchair for children

Max. load capacity: 50 kg/110 lbs
Article number: 490E55=00000_K



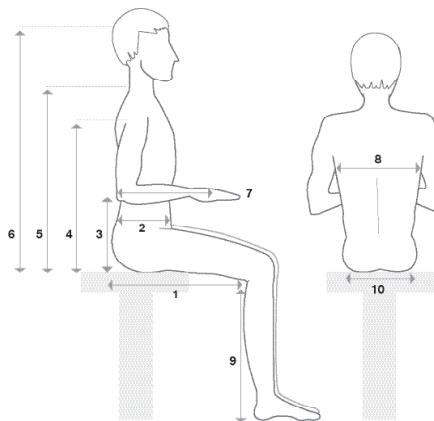
Standard equipment

- enAble40 with the ability to control two electric options
- 6 km/h
- 28 Ah (C5) AGM batteries
- Battery charger
- 8" PU caster wheels
- Standard seat with back bag
- Seat cushion (seat cushion thickness: 30 mm)
- Telescoping side panels
- Individual telescoping leg supports
- Wheel cover for drive wheels
- Drive wheels with aluminium rim, black
- Lap belt with buckle
- Electric lighting for footpaths

Basic data (voluntary information)

Gender _____ Indication _____

Age _____ Paying party _____



* This information will help to support user-oriented settings and product development. Ottobock guarantees the confidential and purely internal use of these data.

Mandatory information*

User height in cm _____

User weight in kg _____

1 Seat depth _____

2 Trunk depth _____

3 Arm support height _____

4 Armpit height _____

5 Shoulder height _____

6 Head height _____

7 Forearm length to the middle of the palm _____

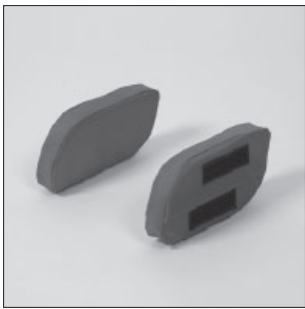
8 Trunk width _____

9 Lower leg length _____

10 Seat width _____

The number codes contained in this order form are not intended to be used as article numbers for spare parts orders. Please use the spare parts catalogue for spare parts orders.

Information



EE 37 Lateral pads



EC 50 Electric seat tilt



EB 02 Individual leg supports



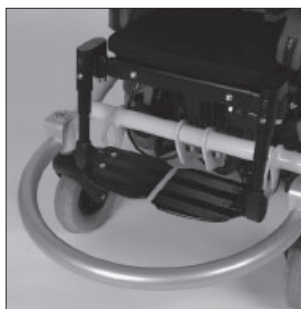
EU 15 Attendant control



EB 05 Single-panel leg support



EB 20 Elevating leg supports



ES 63 Bumper bar

Setting for standard seat	(SD 28 ... 38 cm, SW 30 ... 38 cm)	
Back support angle	<input type="checkbox"/> mechanical -9/1/11/21°	<input type="checkbox"/> mechanical 0/10/20/30°
Not available with electric back support angle adjustment!		
Seat depth SD in cm	<input type="checkbox"/> 28	<input type="checkbox"/> 30 <input type="checkbox"/> 32 <input type="checkbox"/> 34 <input type="checkbox"/> 36 <input type="checkbox"/> 38
Seat width SW cm (30 ... 38 cm, SW 24 ... 29 cm possible with removable lateral pads)	
Lower leg length cm (15 ... 38 cm) without seat cushion	

Push handles		
ED10	<input type="checkbox"/>	Height-adjustable, detachable £183.00

Seat tilt		
EC 51	<input type="checkbox"/>	Mechanical, continuous, range 20° £191.00
EC 50	<input type="checkbox"/>	Electrical, continuous, range 20° £455.00

Seat height adjustment		
EC57	<input type="checkbox"/>	Electrical, continuous, range 20 cm / 7.9" £1029.00

Back support angle adjustment		
ED 50	<input type="checkbox"/>	Electrical, continuous, range 25° £571.00 (not available in combination with seating shell adapter)

Seating system accessories		
EE 30	<input type="checkbox"/>	Mounting accessories for head support £33.00
EP 65	<input type="checkbox"/>	Lap belt with buckle Inclusive
EE 37	<input type="checkbox"/>	Lateral pads, detachable, for side panel (pair, thickness 1.2"/3 cm, not available in combination with seating shell adapter for Mygo seating unit) £77.00
ED 11	<input type="checkbox"/>	Back support extension (35 cm / 13.8" - 46 cm / 18.1") £154.00

Information on head supports, lap belts and other accessories can be found in the accessory catalogue

Leg supports		
EB 02	<input type="checkbox"/>	Individual leg supports with aluminium foot plates (standard equipment, LL 23 - 38 cm) Inclusive
EB 05	<input type="checkbox"/>	Single-panel leg support with aluminium foot plate (LL 23 - 38 cm) £142.00
EB 06	<input type="checkbox"/>	Individual leg supports for short lower leg length with aluminium foot plates (LL 15 ... 22 cm) £203.00
EB 16	<input type="checkbox"/>	Leg support for short lower leg length with single-panel aluminium foot plate (LL 15...22 cm) £289.00
EB 20	<input type="checkbox"/>	Mechanically elevating leg supports (LL 15 ... 33 cm) £511.00
EB 07	<input type="checkbox"/>	Without leg supports Inclusive

Information on foot positioning can be found in the accessory catalogue

Frame colour		
017	<input type="checkbox"/>	Yellow RAL 1023 (back support upholstery blue, wheel covers black) Inclusive
018	<input type="checkbox"/>	Signal red RAL 3001 (back support upholstery blue, wheel covers yellow) Inclusive
010	<input type="checkbox"/>	Marine blue (back support upholstery red, wheel covers yellow) Inclusive
016	<input type="checkbox"/>	Silver metallic (back support upholstery black, wheel covers black) Inclusive
037	<input type="checkbox"/>	Pink (back support upholstery black, wheel covers black) Inclusive

Tyres		
EF 10	<input type="checkbox"/>	Puncture-proof 8" PU caster wheels, drive wheels 12 1/2 " pneumatic, black aluminium rims (standard equipment) Inclusive
EG 06	<input type="checkbox"/>	Puncture-proof tyres for all wheels £109.00

Battery charger			
EU 91	<input type="checkbox"/>	Battery charger (standard equipment)	Inclusive
EU 92	<input type="checkbox"/>	Battery charger without fan (low-noise)	£59.00
Control panel			
EU 85	<input type="checkbox"/>	Control panel "enable 40" with LCD and buttons for lighting (standard equipment)	Inclusive
Control panel holder			
EU 19	<input type="checkbox"/>	Control panel holder (standard equipment)	Inclusive
EU 20	<input type="checkbox"/>	Swing-away in parallel control panel holder	£174.00
Control panel holder mounting side (not for mid-tray control)			
	<input type="checkbox"/>	Right	
	<input type="checkbox"/>	Left	
Activation of the drive-away lock			
	<input type="checkbox"/>	Yes	
	<input type="checkbox"/>	No	
Control device accessories			
EU 15	<input type="checkbox"/>	Attendant control (height-adjustable, removable push handles required)	£497.00
EU 22	<input type="checkbox"/>	Protective bow for control panel	£46.00
EU 23	<input type="checkbox"/>	Fork for tetraplegics (hand width 4-8 cm/ 1.6"-3.1")	£117.00
EU 24	<input type="checkbox"/>	Stick S80 (Joystick handle 80 mm/ 3.1")	£59.00
EU 25	<input type="checkbox"/>	Soft ball, black covered	£61.00
EU 26	<input type="checkbox"/>	Ball top, small (diameter 43 mm/1.7")	£80.00
General accessories			
ES 05	<input type="checkbox"/>	Lighting according to German Motor Vehicle Safety Standards (StVZO)	£356.00
ES 39	<input type="checkbox"/>	Manual horn (Kangaroo)	£20.00
ES 35	<input type="checkbox"/>	Tray, swing-away (including mounting accessory, cut-out for control panel has to be custom-made)	£394.00
ES 40	<input type="checkbox"/>	Pennant	£28.00
ES 63	<input type="checkbox"/>	Front bumper bar, detachable, silver (only up to LL 32 cm)	£199.00
EZ 52	<input type="checkbox"/>	Tool kit with air pump	£38.00
ES 60	<input type="checkbox"/>	Vehicle transport kit according to ISO 7176-19	Inclusive