



SEDEO

SEATING & POSITIONING

Setting the
NEW
STANDARD



2010:
*good industrial
design*

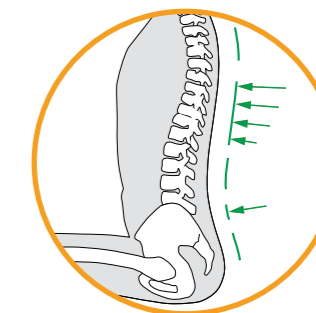
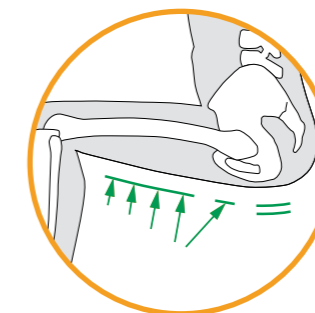
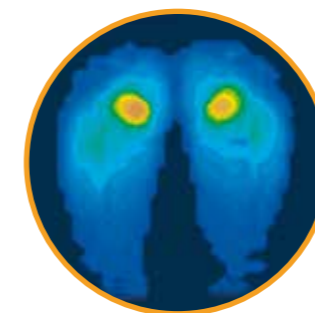


The Sedeo seating system...

It is our belief that ergonomic seating is the basis of an optimal mobility solution. Clearly, good seating is highly personal by nature. It is all about creating a seating posture which makes it possible to achieve individual objectives related to physical support as well as social and practical challenges. This requires effective support of the body, particularly the pelvis and thorax areas. And naturally, optimal pressure distribution is essential to limit the risk of skin breakdown. All of this is fully reflected in Sunrise Medical's, award-winning Sedeo seating system. Truly modular in design, Sedeo provides a new level of functionality, comfort and design.

Sedeo combines a highly adjustable seat frame – Sedeo Lite and Sedeo Pro - with a wide choice of support and positioning options, including a full range of high-quality seat cushions and backrests. It can be easily customized to suit individual requirements, and quickly adapted to changing needs. Providing ergonomic seating and enhancing independence in everyday life, Sedeo is available on most Sunrise Medical wheelchairs.

...ergonomic seating made easy



Excellent choice of support & positioning options...

SEDEO LITE

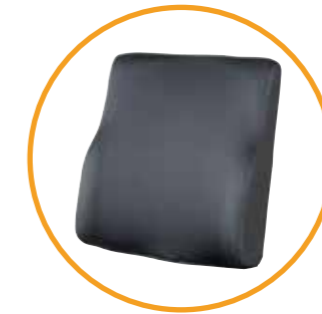


SEDEO PRO



...'mix and match' for the right fit

Sedeo offers you a wide choice of support and positioning options. Two seat frame types are available as a basis. Sedeo Lite, a no-nonsense, robust seat frame for those who can cope with simpler functionality. Maximum user weight 130 kg. And Sedeo Pro, highly functional and adjustable for those requiring high positioning support. User weight up to 160 kg. Most Sedeo options, including a complete range of comfort seat cushions, backrests, armrests and legrests, can be easily combined with both seat frames, always providing an ergonomic seating solution. And allowing you to easily add and/or exchange options (upgrade) to adapt to changing needs.



Full range of high-quality seat cushions and backrests...

Good seating starts with your personal needs. These may include enhanced postural stability, slouching prevention or freedom of movement for easy transfers - just to name a few. No matter what challenges you are facing, creating a seating posture that allows you to meet your specific objectives is essential. This requires the right level of support in the right spots, particularly the pelvis and thorax areas.

Sedeo offers an extensive range of comfort seat cushions and backrests, each with their specific properties to meet your support requirements. Naturally, they also optimize pressure distribution and avoid shear forces to limit the risk of skin breakdown, which is particularly important if you sit in your wheelchair for extended periods of time. New breathing, waterproof and washable cushion covers - with zippers - ensure good hygiene.

However, there is more to ergonomic seating than choosing the right cushion. Only when combined with an individually adjusted seat frame – armrest height, legrest length, seat angle etc. – maximum seating comfort can be achieved.

SEAT CUSHION GUIDE

	Seating objective	Seat cushion 5 cm	Padded seat	Memory foam seat	Support seat	Support TR seat with memory foam	Form seat	Balance seat	Fluid seat	Air seat
Postural support requirements	Enhance freedom of movement	●●●●	●●	●	●	●	●	●●	●	●
	Help prevent slouching	●	●●	●●	●●●●	●●●●	●●●●	●●	●●	●
	Enhance lateral stability	●	●●	●●	●●●●	●●●●	●●●●	●●●●	●●	●●
Risk of skin breakdown	Provide optimal pressure distribution	●	●	●●	●●	●●●●	●●●●	●●●●	●●	●●●●
	Limit risk of shear forces	●	●	●●	●●●●	●●●●	●●●●	●●	●●●●	●●●●
	Help prevent deformation of soft tissue	●	●	●●	●●	●●	●●	●●	●●	●●●●

BACKREST GUIDE

	Seating objective	Sling backrest	Padded backrest	Webbed backrest	Support backrest	Backrest with adjustable straps passive	Backrest with adjustable straps active	Backrest with adjustable straps passive flexible	Backrest with adjustable straps active flexible	Extra deep backrest with adjustable straps active flexible
Postural support requirements	Enhance freedom of movement	●●●●	●●●●	●●	●	●	●●	●	●●	●
	Help prevent slouching	●	●	●	●	●●●●	●●●●	●●●●	●●●●	●●●●
	Enhance lateral stability	●	●	●	●●	●●	●●	●●●●	●●●●	●●●●

... maximum seating comfort



Seat cushion 5 cm
Basic seat cushion



Padded seat
Maximum comfort and unrestricted freedom of movement

Sling backrest
Basic backrest



Padded backrest
Maximum comfort and unrestricted freedom of movement



Memory foam seat
Distributes pressure more evenly and reduces peak pressure. Good positioning support



Support seat
Very good postural stability and good pressure distribution

Webbed backrest
Good pressure distribution, excellent comfort and good positioning support



Support backrest
Maximum comfort. Extra lateral support for good postural stability



Support TR seat with memory foam
Very good postural stability and good pressuredistribution



Form seat
Excellent postural stability and good pressure distribution

Backrest with adjustable straps passive
Multi-functional backrest enhancing sitting posture. Good postural stability



Backrest with adjustable straps active
Multi-functional backrest enhancing sitting posture. Good postural stability with unrestricted freedom of movement



Balance seat
Excellent pressure distribution combined with high lateral stability. Helps prevent slouching



Fluid seat
Excellent pressure distribution ensures high skin protection. Good positioning and stability

Backrest with adjustable straps passive flexible
Multi-functional backrest enhancing sitting posture. Good postural stability and adjustable lateral support



Backrest with adjustable straps active flexible
Multi-functional backrest enhancing sitting posture. Good postural stability with unrestricted freedom of movement and adjustable lateral support



Air seat
Optimal pressure relief ensures high skin protection. Good positioning and heat regulation



Pan seat
Universal solution for anti-decubitus cushions

Extra deep backrest with adjustable straps active flexible
Multi functional backrest enhancing sitting posture. Good postural stability and extra deep adjustable lateral support

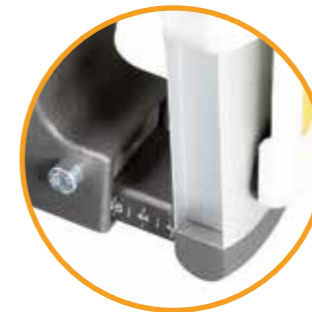


Highly adjustable...

To meet your individual seating needs today and in time, you want total flexibility. That is why our Sedeo seating system not only offers a wide choice of support options, but is also fully adjustable. All adjustments - including common adjustments like seat depth and width, backrest angle and height, legrest angle, lower leg length, armrest height and depth, and headrest height - can be done quickly and easily, creating the right seating posture for you. And allowing for easy customisation in case of changing requirements. To optimise driving characteristics, just change the centre of gravity by repositioning the complete seat unit on the carrier. You will keep all your personal adjustment settings – and thus a perfect fit.



... quick and easy to suit individual needs





reddot design award
winner 2012

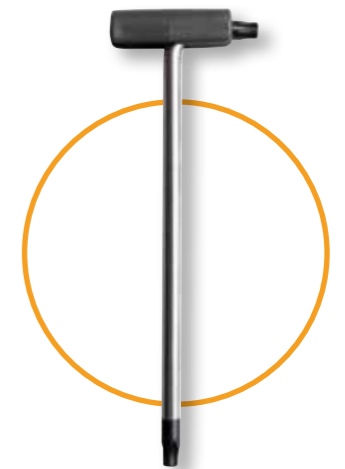


Easy to work with...

Sedeo is a seating system that works for the healthcare professional. A modular design with a wide choice of interchangeable positioning options combined with high adjustability allows them to create a perfect fit for each client. Also in case of changing needs or re-use. Quick and easy to adjust with self-explaining measuring scales and one simple working routine - using just ONE tool delivered with the chair - allows for more personal attention. No extra parts are required. Moreover, Sedeo fits on most of our wheelchairs. Easy to clean with waterproof, breathable and washable cushion covers, and high finishing of components.

... always a good seating solution

Fully
adjustable
with just
one tool





Easy to use...

Naturally, a good seating solution provides you with excellent positioning support. Yet to enhance independence in everyday life, it must also be highly user-friendly. This is reflected in the ergonomic design of all Sedeo operating levers. Clearly visible due to a light-grey colour, all adjustment options are easily accessible. Low operating forces are required. Swing away or remove your armrest and/or legrests for an easy transfer.

... maximum independence



Co-designed with industry experts...

Sunrise Mediocla has a reputation for high quality and safety. This is also reflected in our Sedeo seating system. Developed and designed in close cooperation with international industry experts, we have again raised the bar. State-of-the-art manufacturing techniques and high-quality materials have been used to ensure durability. And the system has been tested beyond the highest industry standards, including strength tests for all individual parts. While creating a highly functional, ergonomic and robust seating solution, however, we have certainly not overlooked the importance of aesthetics. This has made Sedeo the first 'Good Industrial Design' award winning seating solution out there.

... highest quality and safety



2010:
good industrial
design

SEDEO LITE

Sedeo Lite is a no-nonsense, robust seat frame, designed for those who can cope with simpler functionality. It comes with upgradable comfort and can be easily combined with a wide choice of positioning and support options. Maximum user weight up to 136 kg.



• Seat cushion 5 cm



• Padded seat



• Memory foam seat



• Support seat
• Support seat with memory foam



• Form seat



• Balance seat



• Fluid seat



• Air seat



• Pan seat with depth adjustable lip
• Pan seat with rear pan
• Board seat



• Incontinence cover
• Comfort cover
• For seat cushions and backrests



• Abduction support



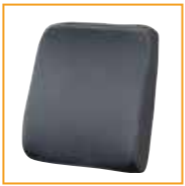
• Sling backrest



• Sling backrest with straps



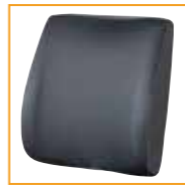
• Padded backrest



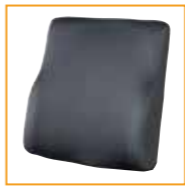
• Webbed backrest
• Backrest with lumbar support
• Backrest extra soft



• Support backrest



• Backrest with adjustable straps passive



• Backrest with adjustable straps active



• Flexible backrest with adjustable straps passive
• Flexible backrest with adjustable straps active



• Extra deep backrest with adjustable straps active flexible



• Thoracic supports



• Third party backrest frame



• Standard legrests with heelstrap



• Manually elevating legrests with calf support



• Sedeo Original legrests
• Calf strap



• Heel straps



• Sedeo Original manually or electrically elevating legrests
• Calf support with or without depth adjustment



• Knee pads



• Amputation support



• Central legrest
• Manually elevating central legrest



• Central calf support
• Central calf support with side support



• Thigh support



• Removable armrests



• Removable armrests with quick-lock
• Widened and raised armrests with quick-lock



• Flip-up armrests



• Armrest pad, 30 cm



• Armrest pad, 40 cm
• Armrest pad narrow, 40 cm



• Angle adjustable armrest pad with quick-lock



• Hemiplegia armrest



• Side supports synthetic



• Side support PU



• Side supports wedge shaped



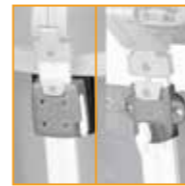
• Headrest PU small



• Headrest flexible



• Headrest large



• Headrest socket on cushion
• Headrest socket on pushbar Sedeo Pro
• Headrest socket on pushbar Sedeo Lite



• Headrest metal parts width adjustable

SEDEO PRO

Sedeo Pro is a highly functional and adjustable seat frame, designed for those requiring high positioning support. It offers total flexibility to meet individual seating needs today and in time. And all adjustments can be done quickly and easily with just one tool! Maximum user weight up to 160 kg.



Excellent choice of options to create a perfect fit

Sedeo.
Ergonomic seating made easy.

Specifications

		SEDEO PRO		SEDEO LITE	
Seat frame					
User weight	kg stone	160	25.2	136	21.4
Seat width	mm inch	420 - 540	16.5 - 21.3	420 - 510	16.5 - 20
Seat width option	mm inch	520 - 680	20.5 - 26.8		
Seat depth	mm inch	440 - 600	17.3 - 23.6	420/440/460/480/500	16.5/17.3/18.1/19/19.7
Point of gravity	mm inch	95	3.7	0/20/40/60	0/0.8/1.6/2.4
Seat					
Seat cushion depth position	mm inch	-20 / 0 / +20	-0.8 / 0 / +0.8	-20 / 0 / +20	-0.8 / 0 / +0.8
Backrest					
Backrest height	mm inch	500 - 640	19.7 - 25.2	480	18.9
Backrest angle	° °	89 - 128	89 - 128	92 / 97 / 102 / 107	92 / 97 / 102 / 107
Armrest					
Armrest pad width per side	mm inch	-20 / 0	-0.8 / 0	-20 / 0	-0.8 / 0
Armrest pad height	mm inch	170 - 290	6.7 - 11.4	170 - 290	6.7 - 11.4
Armrest pad height option	mm inch	270 - 390	10.6 - 15.4		
Armrest depth	mm inch	80	3.1	80	3.1
Armrest pad depth remote side	mm inch	50	2	50	2
Armrest pad depth non remote side	mm inch	160	6.3	160	6.3
Armrest pad angle (vertical)	° °	0 - 15	0 - 15		
Side support					
Side cushion height	mm inch	65	2.6	80	3.1
Sedeo Original legrest (set)					
Lower leg length	mm inch	360 - 530	14.2 - 20.9	360 - 460	14.2 - 18.1
Knee angle	° °	70	70	70	70
Ankle angle	° °	0 - 180	0 - 180		



Sedeo.

Ergonomic seating made easy.



reddot design award
winner 2012



PUMA 20



PUMA 40



IBIS



www.SunriseMedical.eu
www.SunriseMedical.co.uk