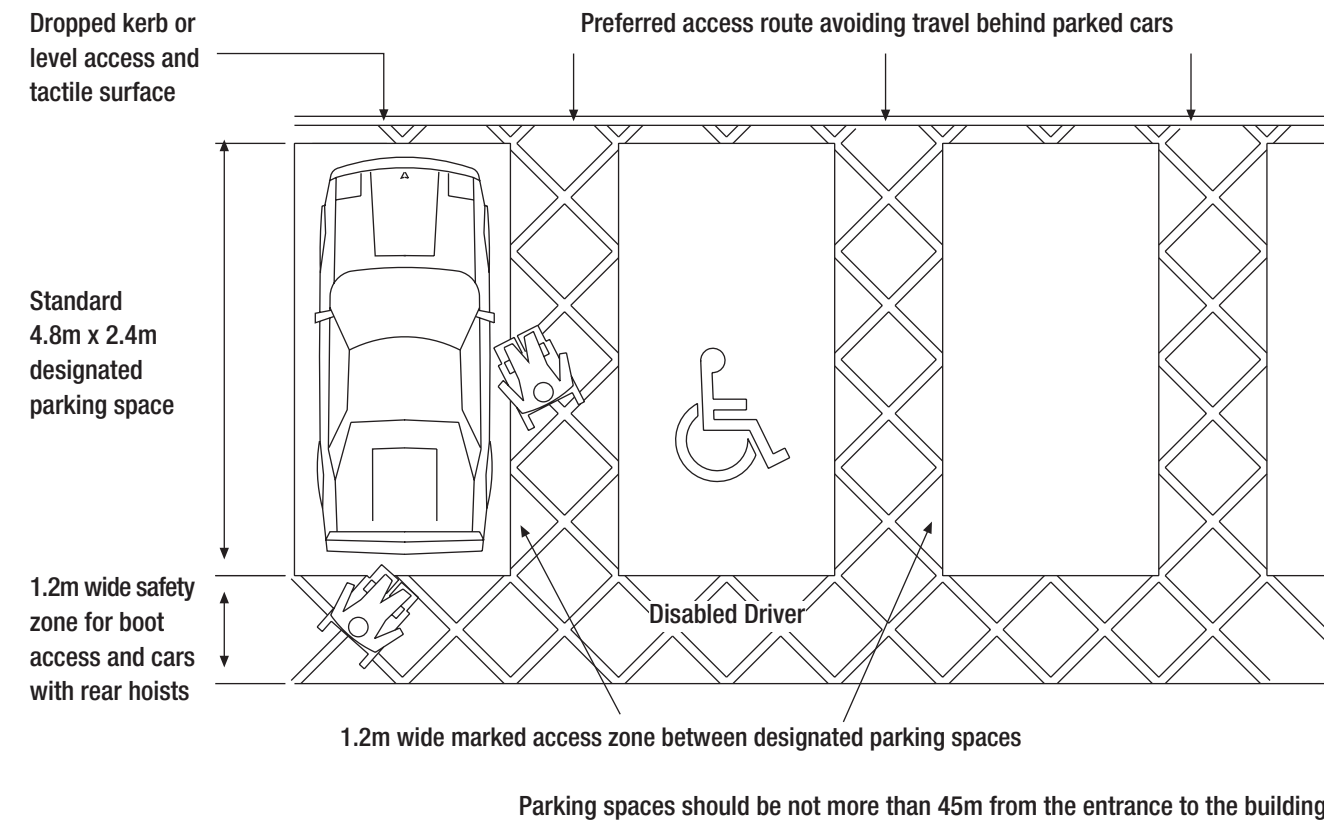




parking

Access around designated off-street parking spaces



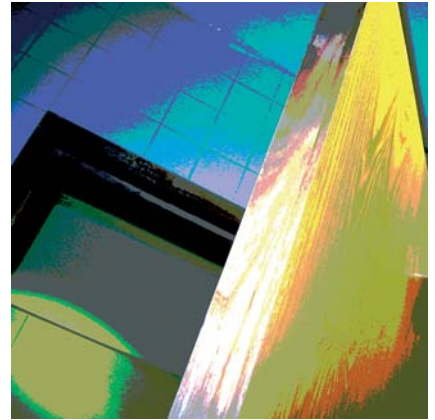
The Access Guide

Removing barriers helps create an inclusive society for everyone



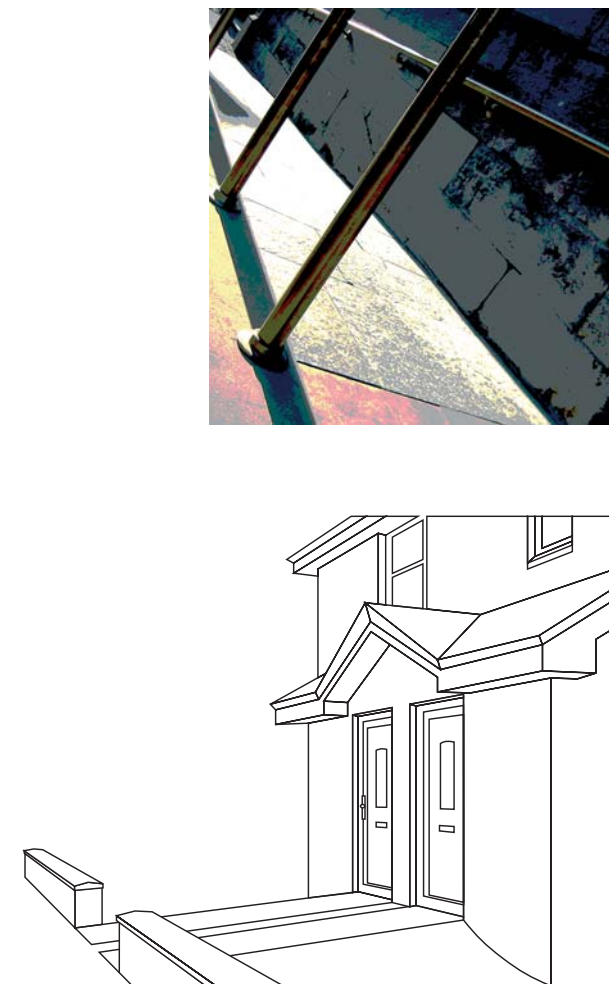
doorways

Door location and side clearance

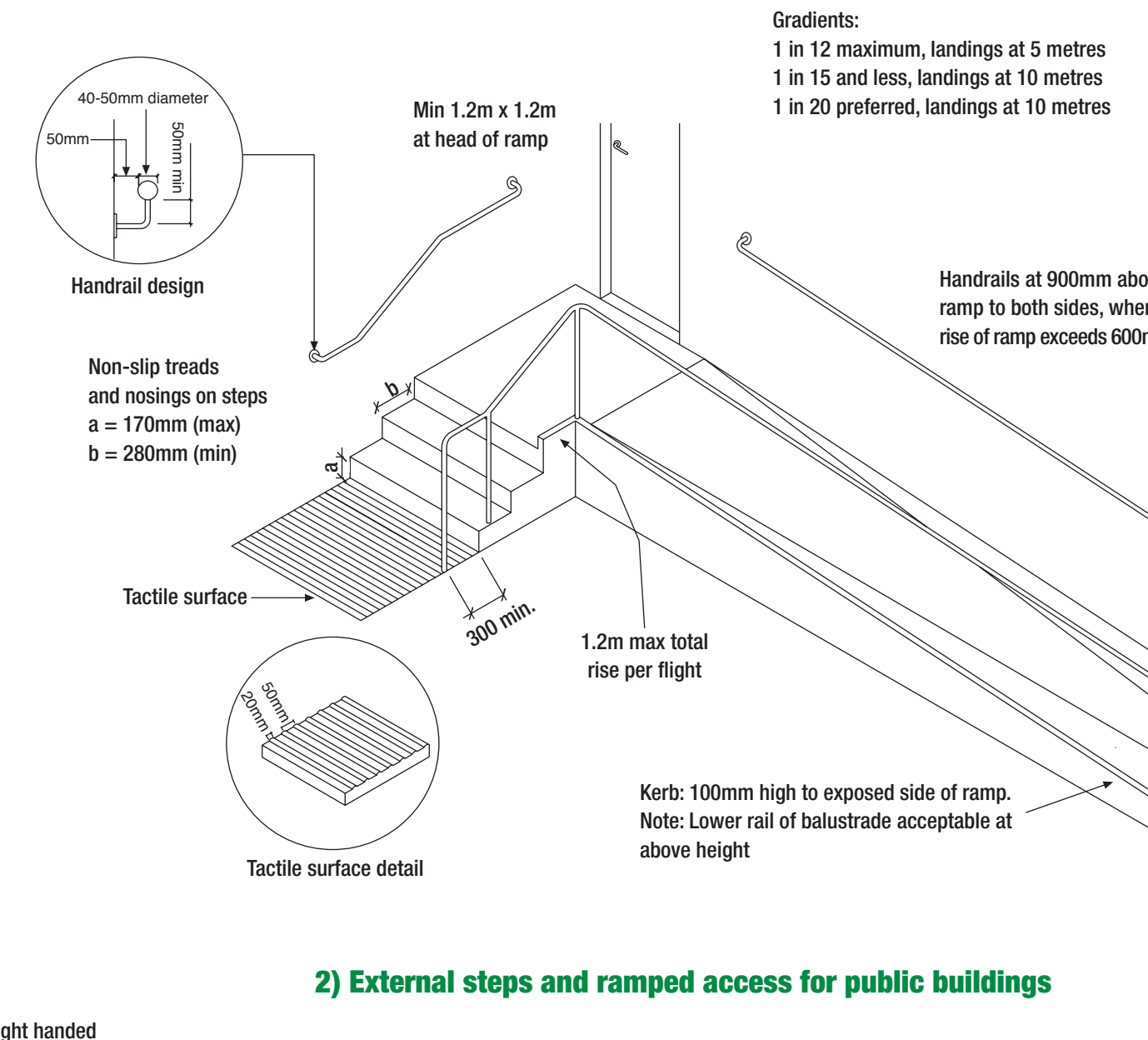


entrances

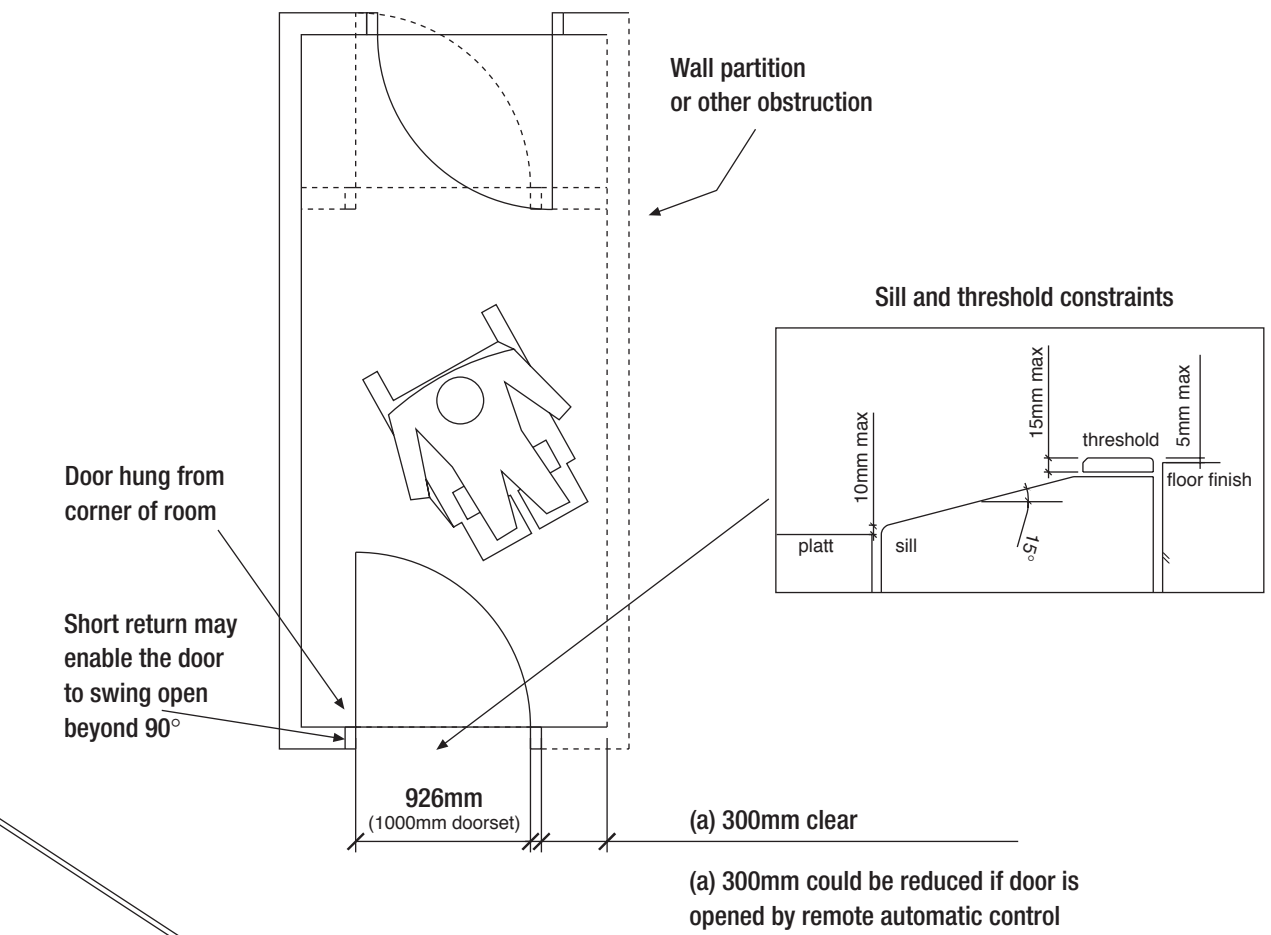
1) Housing and 2) Public buildings



1) Level thresholds for homes



2) External steps and ramped access for public buildings



sensory

Hearing

- Induction loops or infra red systems should be installed in conference rooms, churches, auditora – also booking and ticket offices
- Red flashing warning lights should be fitted in public places; visual indicators
- Portable Vibra-alarms should be available for hotel bedrooms

Visual

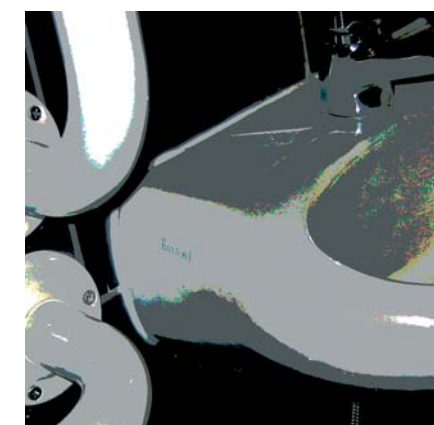
- Use colour contrast, textured and tactile surfaces, audible indicators. Avoid obstacles

Hearing and visual

- Well-lit areas are essential for lip-reading and partial vision

Floors and wall surfaces

- Avoid glare from ceilings, walls and floors
- Avoid deep pile carpets which which some wheelchair users will find difficult to propel over
- Avoid confusing patterns on any floorcoverings. Use contrasting colours between floorcovering and furniture
- Floor finishes should be non-slip wet or dry, impervious, non-glossy
- Avoid unexpected changes in level
- Use lighting, colours and texture to warn of low ceilings and changes in level. Avoid wall projections. Where possible, site radiators in recesses and/or use covers as protection



toilets

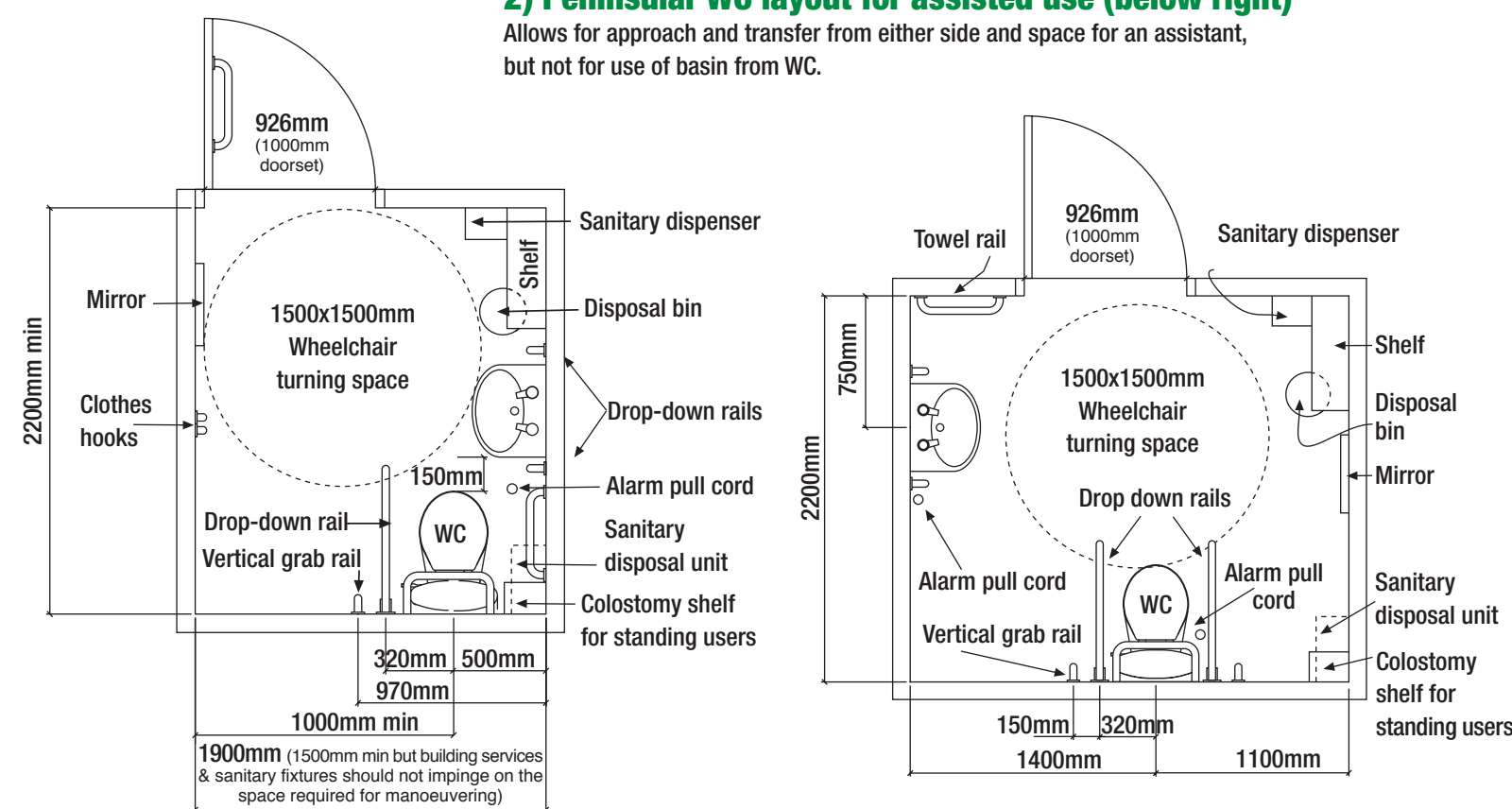
Unisex accessible WC layouts All layouts may be left or right handed

1) Corner WC layout for independent use (below left)

Can accommodate a variety of methods of transfer and allows most users to wash and dry their hands while seated on the WC before transferring back to their chair.

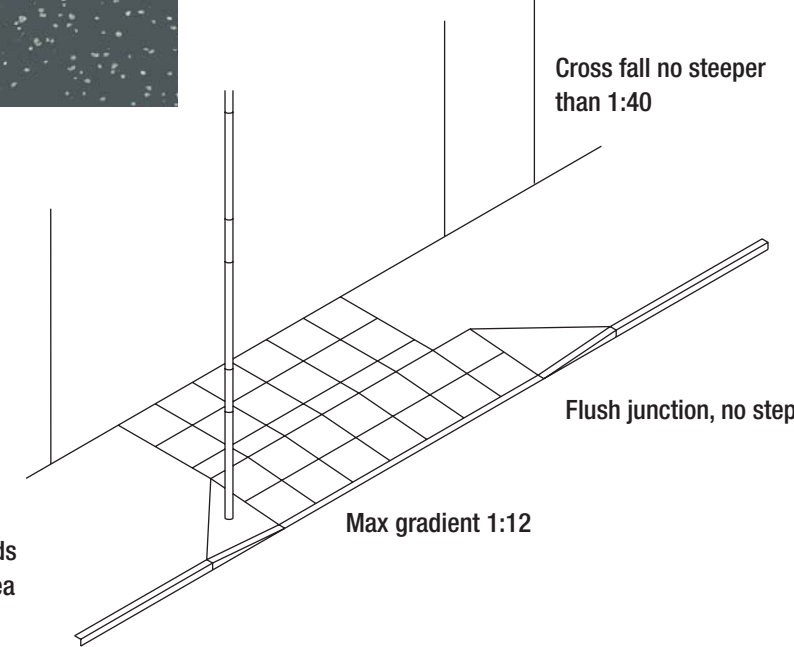
2) Peninsular WC layout for assisted use (below right)

Allows for approach and transfer from either side and space for an assistant, but not for use of basin from WC.



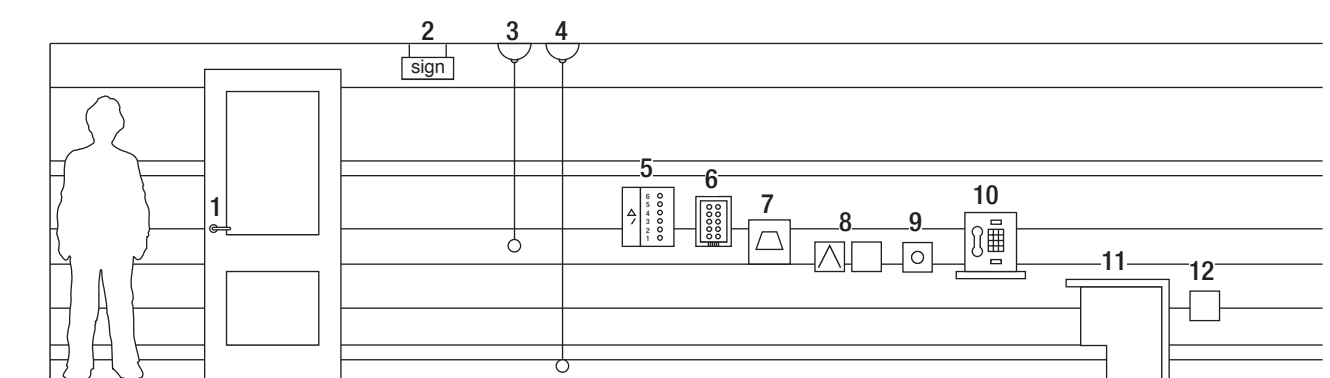
crossings

Example of blister surface at controlled crossing point



controls

Fixture control heights



- 1 Door handles 900-1100mm
- 2 Suspended & wall-mounted signs 2100mm
- 3 Pull cord 750-1000mm
- 4 Alarm cord 100mm
- 5 Lift controls 900-1100mm
- 6 Door entry system 750-1000mm
- 7 Electric hand dryer 800mm
- 8 Heating & vent controls 750-1000mm
- 9 Light switches 750-1200mm
- 10 Public telephone 700mm
- 11 Counters 700mm height, 300mm toe recess
- 12 TV, telephone, sockets 400-700mm

symbols



Symbol for Accessibility



The Information Symbol



Assistive Listening Systems



Access for People with Low Vision