

OPTIONS

Axle-Travelling Elevating Legrest

The VIP2 footrest stretches automatically during elevation, which allows users' legs to extend freely.



Traditional legrest



VIP2



Adjustable Curved Headrest with Sideways Adj



Tension Adjustable Seat



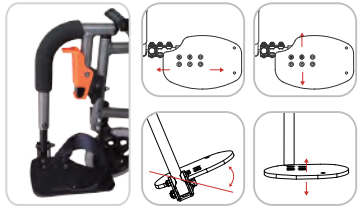
Flip-back Hemi Armpad Adj. in Height



20" Rear Wheel



20" Quick Release Rear Wheel



90° Straight Legrest with Multiple Directional Adjustable Footplate



Angle Adjustable Footplate



Crutch Holder



IV Pole Holder



Oxygen bottle Holder

SPECIFICATION

seat width	F/R wheels											Max. User Weight
16"	7"x14"	40	41	64	38	21-27	105	49	49/54	98	22.3 kg	115 kg
16"	7"x20"	40	41	68	42	21-27	105	49	49/54	98	22.5 kg	115 kg
16"	7"x14"	40	46	64	38	21-27	110	49	49/54	98	23.2 kg	115 kg
16"	7"x20"	40	46	68	42	21-27	110	49	49/54	98	23.4 kg	115 kg
18"	7"x14"	45	41	69	38	21-27	105	49	49/54	98	22.3 kg	115 kg
18"	7"x20"	45	41	73	42	21-27	105	49	49/54	98	22.5 kg	115 kg
18"	7"x14"	45	46	69	38	21-27	110	49	49/54	98	23.2 kg	115 kg
18"	7"x20"	45	46	73	42	21-27	110	49	49/54	98	23.4 kg	115 kg
16"	6"x14"	40	41	64	38	21-27	105	46.5	49/54	95	22.3 kg	115 kg
16"	6"x20"	40	41	68	42	21-27	105	46.5	49/54	95	23.2 kg	115 kg

" / " means optional : " - " means adjustable

karma

KARMA Mobility Limited
 Unit 6, Target Park, Shawbank Road,
 Redditch, B98 8YN, UK
 TEL:0845-630-3436 FAX: 0845-630-3736
 Email: Info@karmamobility.co.uk
 www.karmamobility.co.uk



KARMA reserves the right to modify information herein without further notice. Rev.00 Jul.2018

karma

A Better Wheelchair, A Better Fit



Manual Wheelchair

VIP2

Tilting, Reclining, and Foldable

Mobility should never be limited by distance. VIP2 allows clients with weak trunk control to travel like everyone else. The fantastic tilt-in-space and reclining function provide the optimal pressure relief and positioning settings. Its foldable and lightweight design also makes it the best chair to store and transport.



14" Rear Wheel

VIP2

Versatile Integrated Performance

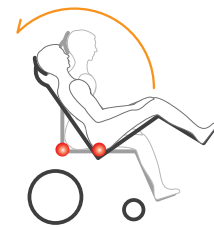


Tilt up to 35°

“... It's easy to fit into the trunk of a rental car and allows my ALS wife to travel on planes and use rental cars, even though she can't hold her upper body upright in a normal wheelchair...”

Weight Shifting With Comfort

The Karma VIP2 has been designed to reduce the anxiety of the user when going into and out of tilt. The unique weight shifting system allows the centre of gravity to travel between front and rear wheels while tilting, providing the steadiest balance possible and a great sense of security for the user.



The centre of gravity shifts between front and rear wheels.
● indicates COG of the chair

Modularized Design, Easy to Upgrade

The tilt only chair is equipped with Angle Adjustable Backrest: -5°/ 0°/ 5°/ 10°/ 15°.

It is also designed to be very friendly for after-market backrest systems, such as Jay and Matrix.



Strap Tension Adjustable Backrest

By adjusting each strap, the backrest can be best fitted to the user, especially for those who have contouring back. It helps to maximize functions and increase sitting tolerances.

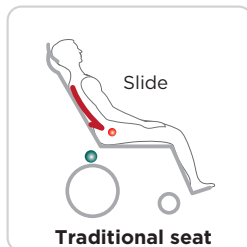


Anti-Sliding Reclining System

Sliding has always been one of the greatest concerns for people in a standard reclining chair. The VIP2 solves this problem by locating the reclining pivot point of the chair close to the human hip joint, which synchronizes the motion of the body and the chair.



Recline up to 30°



Traditional seat

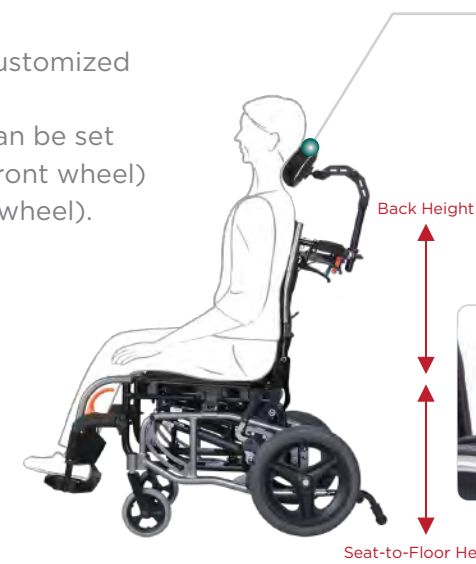


VIP2

● indicates human hip joint
● indicates the reclining pivot point of the chair

Multiple adjustments

The back height can be customized to be 49cm or 54 cm. The seat to floor height can be set to either 49 cm (with 7" front wheel) or 46.5 cm (with 6" front wheel).



Curved Headrest

The curved headrest can be adjusted horizontally, vertically, anteriorly, and posteriorly. The head pad angle can be adapted based on user's head curve.



Ergonomic Armrest

The armrests are height adjustable, detachable, and ergonomic.

Foldable and Durable

The VIP2 is light, foldable and easy to fit into the boot. The lateral push-bar strengthens the durability of this foldable chair and makes it more efficient to push.



Detachable footrest

The legrest can be swung away with one hand in one second. This design completely clears up the leg space, which provides user a safer front transfer.

