

ARJOHUNTLEIGH

GETINGE GROUP

MINSTREL

THE CLASSIC LOOP SLING LIFT



...with people in mind

SIMPLICITY AND SECURITY FROM ArjoHuntleigh...

From the busiest hospital to the smallest nursing home, carers are faced daily with the risk of crippling back pain and injury due to the manual moving and handling of resident/patients. As the problem grows and the costs rise, carers themselves need a helping caring hand. ArjoHuntleigh Patient Lifts are firmly established as the most appropriate for today's professional nurse and carer. They are easy to understand, simple to operate and offer maximum resident/patient comfort.



...A CLASSIC SOLUTION FOR TRADITIONAL PROBLEMS

The *Minstrel* combines classic lifting technology with the latest standards in safety, security and comfort for both resident/patient and carer alike. Incorporating a full range of head and body support slings, the electrically operated *Minstrel* means that carers can give their full undivided attention while lifting. No winding handles or hydraulic pumps mean that there is constant reassuring contact with their resident/patient at all times.

Minstrel has a solid hanger bar assembly that will prevent swinging and swaying of the resident/patient adding to their overall safety and sense of security.

Designed for use in smaller facilities or at home, the compact *Minstrel* will lift resident/patients weighing up to 190 kg or 419 lbs. Yet thanks to the large diameter, low friction castors, it is still easy to move and maneuver.

Be it lifting a resident/patient who has fallen to the floor or moving a him/her out of bed and into their favorite chair, the *Minstrel* is a classic and versatile solution to many general lifting problems. Because of the speed and smoothness of the lifting action the resident/patient has a feeling of safety and security, while the carer is able to maintain proper body posture and avoid injury.



One of the most dangerous tasks faced by carers is moving a resident/patient who has fallen to the floor. This may happen at night when fewer staff means that a carer will have to perform this lift alone. With the *Minstrel* one carer can safely and comfortably perform this task without needing to sit the resident/patient up.



Once lifted the resident/patient can be transferred smoothly and securely back to their room, thanks to the ergonomically designed push handles and the easy roll castors.



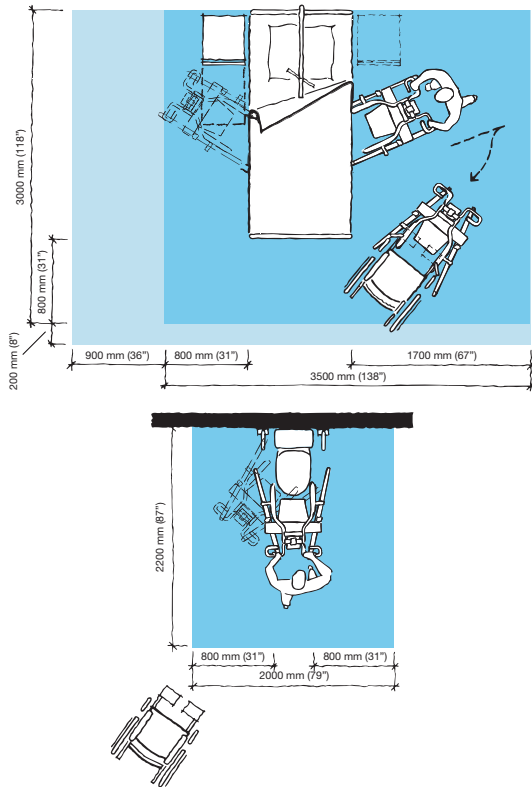
Operated by a simple foot pedal, the *Minstrel's* chassis can be easily adjusted to allow close access and maneuverability around large chairs, wheelchairs, beds and toilets. After a distressing fall the carer can easily bring the resident/patient back to bed with the minimum disturbance and maximum comfort.



The *Minstrel* is also available with a scale option, allowing the carer to quickly weigh their resident/patient whilst performing a transfer. Combining these two tasks not only reduces manual handling, but also facilitates the quality of resident/patient care.

PRODUCT SPECIFICATIONS

Space requirement



- Blue area shows the minimum working area required for the staff to be able to use the mechanical aids in an ergonomic way from one side.
- Light blue area shows required extension of working area to facilitate activities from either side to provide adequate access for the resident, mechanical aid and assisting carer.

Product information

Max. safe working load	190 kg (419 lbs)
Weight	56 kg (123 lbs)
Weight with Scale	57 kg (125 lbs)
Total length	1275 mm (50 ¼")
Min. lifting height	625 mm (24 ½")
Max. lifting height	2000 mm (78 ¾")
Height of chassis	110 mm (4 ⅜")
External width legs closed	620 mm (24 ½")
Internal width legs open	925 mm (36 ½")
Low friction castors, the rear two with brakes	
Battery	24V 4Ah
A battery and a charger are supplied with each Minstrel	
Protection class	Handset IP67 Lifter IPX4
Emergency stop and system failure override	

Approvals

The product is in compliance with current legislation and applicable product standards.

Only ArjoHuntleigh designed parts, which are designed specifically for the purpose, should be used on the equipment and products supplied by ArjoHuntleigh. As our policy is one of continuous development we reserve the right to modify designs and specifications without prior notice.

® and ™ are trademarks belonging to the ArjoHuntleigh group of companies.
© ArjoHuntleigh, 2010

Mobility Gallery™

Elderly Care



DORIS



EMMA

Special Care



DANIEL



EMIL

D, who has no capacity to support him/herself

E, who is almost completely bedridden and totally dependant

Please contact ArjoHuntleigh for further information on the Mobility Gallery™.

ARJOHUNTLEIGH

GETINGE GROUP

www.ArjoHuntleigh.co.uk

GETINGE GROUP is a leading global provider of products and systems that contribute to quality enhancement and cost efficiency within healthcare and life sciences. We operate under the three brands of **ArjoHuntleigh**, **GETINGE** and **MAQUET**. **ArjoHuntleigh** focuses on patient mobility and wound management solutions. **GETINGE** provides solutions for infection control within healthcare and contamination prevention within life sciences. **MAQUET** specializes in solutions, therapies and products for surgical interventions, interventional cardiology and intensive care.

ArjoHuntleigh UK – Head Office

ArjoHuntleigh House,
Houghton Hall Business Park,
Houghton Regis, Bedfordshire,
LU5 5XF, United Kingdom
Sales Phone: +44 (0) 1582 745700
Sales Fax: +44 (0) 1582 745745
Rental 24hr Helpline
Lo-call Phone: +44 (0) 8457 342000
Rental Fax: +44 (0) 1582 745843
Email: sales.admin@ArjoHuntleigh.com

ArjoHuntleigh UK Service and Technical Centre

St Catherine Street,
Gloucester, GL1 2SL,
United Kingdom
Phone: +44 (0) 8456 114114
Service Fax: +44 (0) 1452 525207
Email: ukservice@ArjoHuntleigh.com

ArjoHuntleigh (Ireland)

EA House,
Damastown Industrial Park,
Mulhuddart, Dublin 15,
Republic of Ireland
Phone: 01 809 8960
Fax: 01 809 8971
Email: dublin@ArjoHuntleigh.ie
www.ArjoHuntleigh.ie

ArjoHuntleigh (Ireland)

19 Heron Road,
Sydenham Business Park,
Belfast, BT3 9LE,
Northern Ireland
Phone: 028 9050 2000
Fax: 028 9050 2001
Email: belfast@ArjoHuntleigh.com
www.ArjoHuntleigh.ie