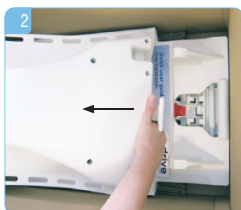


## Quick User guide - First installation

### 1. Remove from the carton and check stop lever



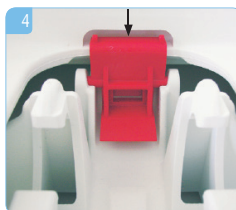
1. Raise the drive unit



2. Move the backrest forward



3. Raise the seat unit

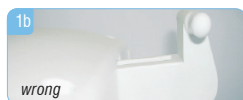


4. Please ensure that the red seat unit locking mechanism is engaged by pushing down on the seat.

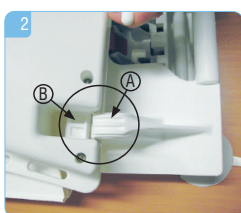
### 2. Attaching the backrest into the seat unit



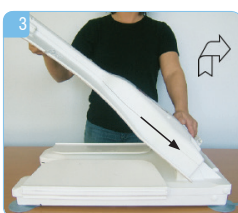
1a  
correct



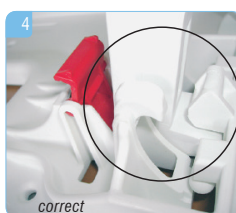
1b  
wrong



2. A: Bearing block – B: Guide pin  
Slide the backrest into the hinge located on the back of the seat unit.

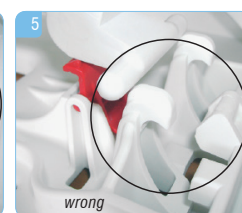


3. Lift the backrest to an 45° Angle until it clicks into the latch.



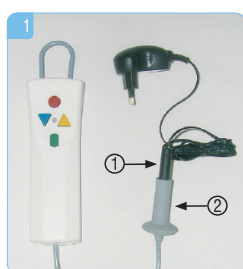
4. Important:

Please ensure that the actuator end is/sits properly in the base plate's ramp.



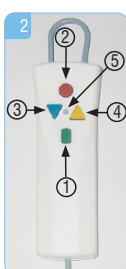
5  
wrong

### 3. Charging the battery • Attaching the hand control



Recharge the battery after application.  
1. Place the plug 1) of the charger into the socket of the cable 2) attached to the hand control. During the charging process, the red light will be on. The light changes to green when the battery is fully charged. After fully charging the battery, please disconnect the charger from the hand control.

Recommended value: Storage the hand control at room temperature.  
Don't place the hand control at a heater. Please avoid direct sunlight.

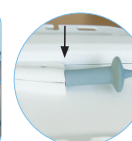


2. Hand control description:

1. Green: power On button
2. Red: emergency Stop
3. Blue: down button
4. Yellow: up button
5. Control light



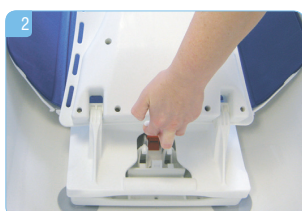
3. Plug the hand control to the bathlift (at the back of the backrest). Make sure that the socket is properly seated on the jack and the red ring on the jack is now hidden.



### 4. Placing or removing the bathlift into/from the bathtub



1.
  - Remove anti-slip mats or similar utilities.
  - The tongues of the rear suction caps must be directed outwards.
  - The suction cups at the bottom of the Bellavita must be clean and dry.
  - Make sure that the rear suction cups are located close to the bevelled edge of the bath.



2.
  - Attention! It is very important that both guide pins are inserted into the bearing blocks! (see point 2).
  - Pivot the attached backrest up until it reaches its final position.
  - **The backrest must not collide with the bathtub. In that case you have to reposition the bathlift.**



3.
  - Before usage, bring the lift into a position which allows seating comfortably.



4.
  - To remove, please turn 45° in advance and pull out. Remove backrest according point 2.
  - Remove the two rear suction cups by pulling the tongues. The seat unit can now be removed from the bathtub.

### 5. Side flap protectors (pair) - Installation and Usage (Accessories)



The bathlift side protectors should be used on baths fitted with grab handles or similar which protrude inside the bath.

To install the protectors, snap the hooked end over the grab handle and allow the long end to slide down the edge of the bath.

Once installed, the side flaps on the bathlift will slide against the protector rather than the edge of the bath. This removes the risk of the bathlift side flaps getting caught underneath the grab handles.

For longer bath handles, one or more protectors may be installed (as shown on picture).

The product code is 400 570 and protectors are supplied in pairs.

