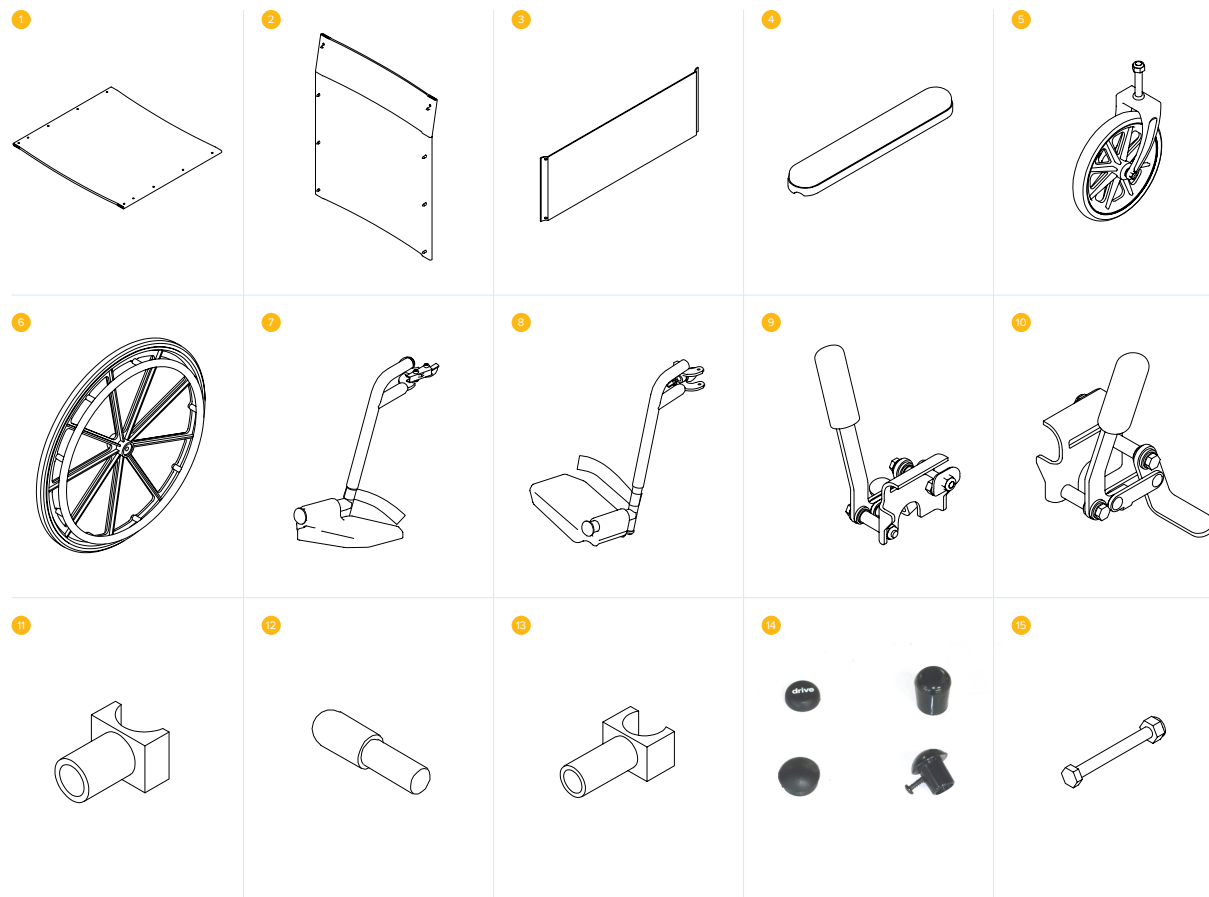


Silver Sport Wheelchair (SSP18FA-SF) Parts Catalogue



- 1 SEAT CANVAS, 18" VINYL, CS142A
CODE: **Z1210-24**
- 2 BACK CANVAS, 18" VINYL, CS142
CODE: **Z1250-24**
- 3 SIDE PANEL, 46CM X 15.5CM, BLACK
CODE: **Z1593-24**
- 4 ARM PAD, FULL LENGTH 35 X 5.5CM
(25.5CM HOLE SPACING) VINYL
CODE: **Z1592-24**
- 5 FRONT CASTOR FORK, 8-SPOKE
WHEEL AND NUT, CS142/SSP18
CODE: **Z1400-24**
- 6 24" MAG WHEEL WITH SOLID TYRE
AND 10MM AXLE, CS142/SSP18
CODE: **Z1460-24MAG**
- 7 RHS LEG REST, ADJUSTABLE TOOL
FREE, CS142 & SSP18FA-SF
CODE: **Z1600-24BLK**
- 8 LHS LEG REST, ADJUSTABLE TOOL
FREE, CS142 & SSP18FA-SF
CODE: **Z1600-24BLK**
- 9 BRAKE, RIGHT, CS142/SSP18
CODE: **Z1700-24**
- 10 BRAKE, LEFT, CS142/SSP18
CODE: **Z1750-24**
- 11 SEAT GUIDE, FRONT, CS142/SSP18
CODE: **Z1024-24**
- 12 LEG REST PIN FOR TR39, SSP18FA-SF,
CS142SP, CS142SPMAG
CODE: **Z12022-24A**
- 13 SEAT GUIDE, REAR, CS142/SSP18
CODE: **Z1025-24**
- 14 COVER SET FOR CS142SPMAG/
SSP18FA-SF
CODE: **Z1009-24**
- 15 CENTRE PIN 85XMB WITH NUT
CODE: **Z1010-24**