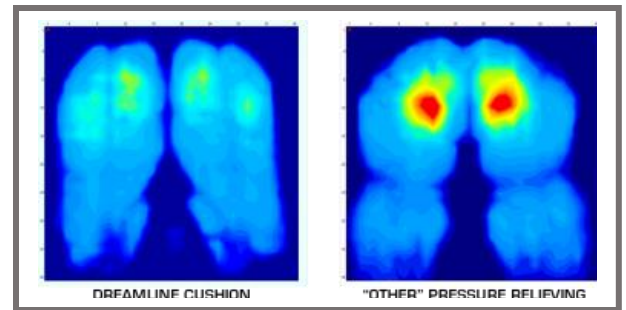


DREAMLINE STX CUSHION

The DreamLine STX cushion with its 80mm contour, is fully adjustable enabling stable positioning from symmetrical to severely asymmetrical postures



FEAUTURES & BENEFITS:

- ✓ The STX can be used in chairs, including specialist seating and standard home chairs
 - ✓ All adjustments made with hook & loop Velcro fasteners for quick adjusting.
 - ✓ Lowering femurs individually to accommodate hamstring tightening.
 - ✓ Accurate depth & Rotation adjustability of pre-ischial shelf for pelvic positioning.
 - ✓ Pelvic Obliquity built-up pads included.
 - ✓ Ability to offset laterals & Pommel for windswept postures.
 - ✓ Pommel may be widened / narrowed for Abduction / femoral rotation.
 - ✓ Leg length discrepancy cut-out.
- ✓ Components may be further cut with a sharp knife to get the size or position you require.



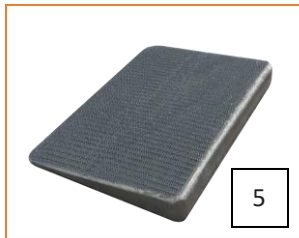
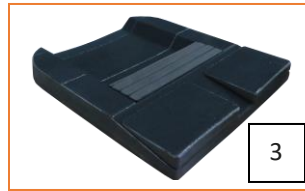
Standard Configuration:

- ✓ Positioning Base
- ✓ 2 x Thigh Wedges
- ✓ 2 x Ischial Pads
- ✓ 2 x Laterals
- ✓ 2 x Pommel (1 x Left side & 1 x Right Side)
- ✓ Comfort wrap
- ✓ Chipped foam pads (Qty depends on cushion size)
- ✓ Inner Cover (Incontinence liner)
- ✓ Outer Cover

SIZING & ACCESSORIES

		Cushion Width						
Cushion Depth		12	14	16	18	20	22	24
12	✓							
14	✓	✓						
16		✓	✓					
18		✓	✓	✓				
20			✓	✓	✓			
22						✓	✓	
24								✓

Accessories can be purchased separately as per the below images and description:



1. Outer Cover
2. Inner Cover
3. Positioning Base
4. Laterals
5. Thigh Wedge
6. Lateral Segments
7. Pommel
8. Comfort Wrap
9. Cluster Gel Pack
10. Pre Ischial Pad
11. BAC pads
12. Pre Ischial Wedges

Useful Information:

- ✓ Safe working load: 135kg
- ✓ Weight of Cushion: 2kg (average)
- ✓ Height Front (cm): 8.5
- ✓ Height Rear (cm): 7.5
- ✓ Warranty: 2 years

****Pricing in discussion****