

ottobock.

# Kimba family

For all life situations



Quality for life

# Foreword

“I want to provide children with the best possible support in all everyday situations – for a lifetime”

Jule Heintorf,  
Product Manager at Ottobock



Devices can make life twice as hard if they fail to adapt to a family’s needs. Parents of children with special needs often feel abandoned and wish for normality. This makes it all the more important to Ottobock that the Kimba family integrates perfectly into individual daily routines – without attracting a lot of attention.

It starts with easy handling and extends to the possibility of using various inlays, exactly the way you prefer them. Children should always have the opportunity to take part in social life. This puts the focus on what’s really important: being a family.







# Mastering daily life, every day.

Thousands of children around the world depend on devices for support because they have a physical or mental disability. Complications during birth or congenital diseases are the main reasons they require care.

## **Everyday support for maximum mobility**

Even the road to the right diagnosis is often rocky. Many diseases are difficult to diagnose. This may mean numerous stays in hospital, examinations by specialists and a constant roller coaster of worry and hope. Most affected individuals are totally unprepared. Only rarely, for example in case of Down's syndrome, is the disability picked up on before birth. Having a child that will depend on care for life and potentially on devices as well initially poses a major challenge for many parents.

The extent to which children require care is considerably different from that of adults. Devices for children have to grow with the child, and need to be individually adaptable and versatile in their use. They provide everyday support and ensure maximum mobility. Choosing the correct devices can also prevent additional malformations.

That's why all products in the Kimba family were developed and tested in cooperation with doctors, therapists and users – to support children and families around the world.







# Your daily routine, your preferences, your life

Our product portfolio provides for ongoing physical development, support and participation in social life. Our core principles for all our medical devices are as follows:

- ✔ Our devices provide the required support while simultaneously promoting and motivating a child's own initiative.
- ✔ The devices respond to the individual needs of each child.
- ✔ Comfort and maximum ease of use.
- ✔ Accompany/support therapy.
- ✔ Social and emotional integration.
- ✔ Making life easier.

## Contents

Rehab buggy.....	8
Kimba family .....	10
Kimba seating unit .....	11
Kimba buggy .....	16
Kimba Cross .....	19
Kimba Home .....	23
Cosa Active / Junior .....	24
Kimba indoor mobility base .....	26
Kimba Inline.....	27
The most common diagnoses.....	28
GMFCS – CP Classification system.....	31
Kimba padding.....	32
Reflective stickers .....	33
More Ottobock devices for children.....	34

# Kimba buggy

## A completely ordinary buggy

### Seat tilt

Nobody wants to sit stiffly in the same position for several hours. A simple, reliable seat tilt feature is therefore especially important. The seat can be easily adjusted depending on the everyday situation and mood. Regularly changing the sitting position also helps with pressure redistribution.

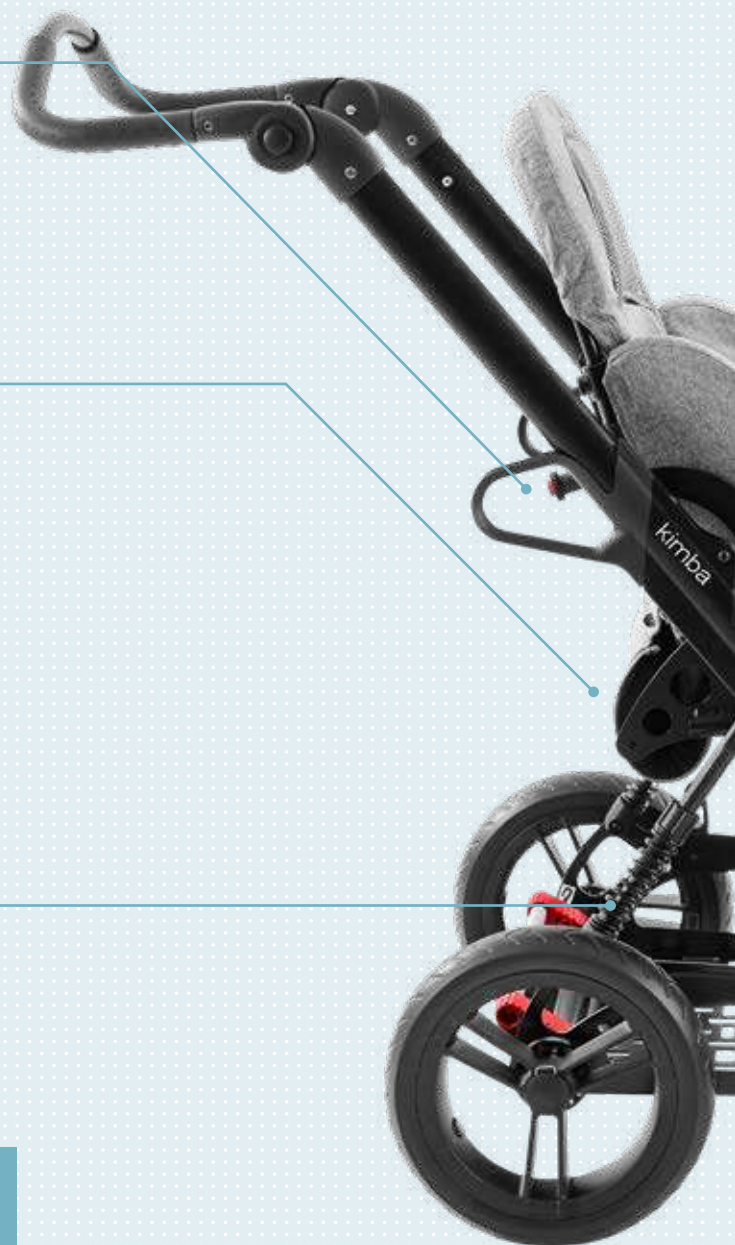
### Back support angle

For eating or sleeping – everyone has their favourite position. The back support angle on the Kimba buggy can be adjusted easily and safely in one movement.



### Good suspension

The large tyres and high-performance suspension of the Kimba buggy ensure ease of operation and good manoeuvrability. Shocks are softened to a significant degree, so walks are relaxing.



### Rehab buggy reimbursement

A buggy is standard equipment for a child. As a rule, the costs for a rehab buggy are therefore covered by health insurance. Obtaining information from other parents, therapists and doctors as well as experienced specialist dealers is worthwhile to help you find the appropriate buggy. Reimbursement by the health insurer requires a corresponding prescription that has to be issued by the doctor in advance.





### **Well positioned**

Every child is an individual and should be treated as such. With numerous available positioning and posture supports, the Kimba adapts to your child's very own needs.



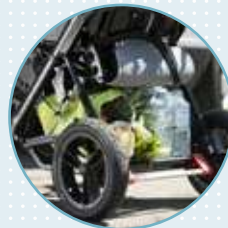
### **A matter of taste**

The Kimba buggy is available in two frame colours. Additional colour accents can be provided, not only with two reflector designs in three colours each, but also with coloured inlays – sewn by us or designed by you (page 32).



### **Folding mechanism**

Transportation and children are a challenge of their own – one that can often tax everyone's patience. A simple folding mechanism avoids wasting time.



### **Storage space**

For shopping, nappies, a sibling's skateboard or a respirator – storage space is important and always nice to have.

# For every challenge

## A seat with countless possibilities

The Kimba family offers numerous combination possibilities. With the appropriate mobility base for indoor or outdoor activities, at home or on the go, in the home, during excursions in the city or on uneven forest ground – your child enjoys optimal safety and support in all of these situations.



**Kimba Inline**  
On the go together (page 27)



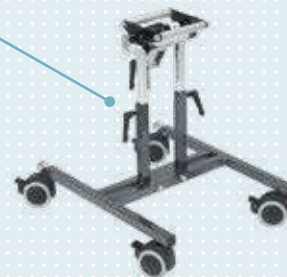
**Kimba buggy**  
Discover the world in safety and comfort (page 16)



**Kimba Home**  
Integration as equals (page 23)



**Kimba Cross**  
The sporty companion (page 19)



**Kimba indoor mobility base**  
For small, confined spaces (page 26)



Art. no. 470G71=5\_AA02\_C

- The seat can be positioned both in and against the direction of travel
- Lateral supports
- Incremental back support angle adjustment – for enhanced safety
- Adjustable hip supports
- Seat tilt adjustable from -10° to 40°
- Leg support with flip-up foot plate

## Kimba seating unit

### Individual and flexible

The Kimba seat was developed with a broad range of options for adaptation to the individual needs of each child. It offers numerous easy-to-use adjustment possibilities for different sitting positions.

#### Options (selection)

- Grabrail/padding for grabrail
- Coloured inlays
- Seat depth reducer
- Back support angle limiter
- Angle-adjustable leg support, also for short lower leg lengths
- Adjustable head supports
- Numerous straps
- Lateral supports
- Lumbar support padding
- Neck support
- Wedge cushion for sitting positioning
- Broad range of accessories for foot and leg positioning

Technical data	Size 1	Size 2
Seat width (min. / max.)	200–300 mm	260–350 mm
Seat depth with seat depth reduction from 140 mm	190–310 mm	240–400 mm
Back support height, shortened	315–455 mm	390–560 mm
Back support length	410–610 mm	560–700 mm
Back support angle	80° to 180°	80° to 180°
Seat tilt	-10° to 40°	-10° to 40°
Lower leg length (min. / max.)	190–310 mm	200–370 mm
Lower leg length, shortened (optional) from	120 mm	120 mm
Folding size (LxWxH)	580x370x420 mm	590x430x580 mm
Weight of seating unit	7.5 kg	9.5 kg
Max. load	40 kg	40 kg

**i** Further product information is available at [www.ottobock.com](http://www.ottobock.com) or directly from your specialist dealer.

# Weekend outings in nature



“Emilia showed us what’s  
really important in life,  
what really counts!”

When we found out about Emilia’s disability, it felt like the rug had been pulled out from under our feet at first. It took some time to accept the situation as it is. Today, we are overjoyed with our little sunshine. The most important thing is that Emilia is happy and able to laugh!” says her mother, Stephanie.

## **Outside in any weather**

The young family enjoys spending time in nature most of all. Fortunately, there are numerous beautiful lakes and child-friendly hiking trails in the vicinity. The Kimba buggy was the perfect companion for Emilia and her family right from the start. They opted for a rehab buggy relatively late in the process. This happens to many parents, because the differences and genuine benefits are not always evident right away. Also, a rehab buggy isn’t “normal”, and many times it isn’t

“attractive”, either. When Stephanie saw the Kimba buggy for the first time, she was elated and didn’t want any other buggy after that. It was love at first sight for Emilia as well. “We haven’t seen her this relaxed while sitting for a long time. Emilia sits in the Kimba seat as though it were a throne and feels right at home,” reports Andreas, Emilia’s father. Stephanie adds: “We’re glad we looked into getting a rehab buggy and that we found the Kimba family. Our everyday life has become much more varied and relaxed.” Aside from hiking, Emilia loves music. Whether it’s singing or dancing, she’s part of the fun. Her little sister, Marina, really enjoys this too. The two of them have a very special relationship.



Please see page 16 for the Kimba buggy with the Kimba seating unit.

### 100% integrated

Emilia's possibilities in everyday life have become virtually unlimited thanks to the Kimba family. Since the Kimba Home enables integration as an equal, the two sisters enjoy moments that would hardly have been possible before. They can also play without their mum sometimes because the Kimba seat provides Emilia with the necessary stability. "It makes me proud and unimaginably happy to see my two children playing together without having to reorganise the entire living room first, or Marina having to adjust to Emilia's sitting position. The big sister adapts to the little sister for a change," says Stephanie.



“We can’t forget  
how to see the world  
through a child’s eyes.”

Emilia is totally dependent on care due to a very rare illness. She is able to grasp things but can only ever hold them in her hand for a short time. Since she cannot stand or walk on her own and needs help eating, someone always has to be with her.



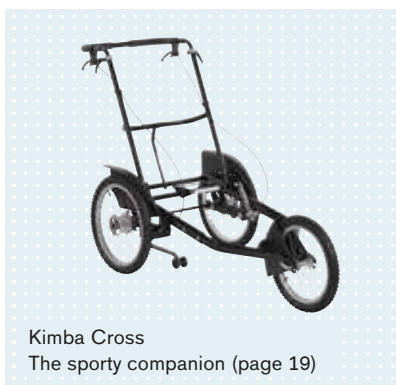
#### **What is Emilia’s illness?**

Inv DupDel 8p is an extremely rare chromosomal abnormality. Possible clinical symptoms include mental disability, severely delayed development (psychomotor and language development), muscle hypotension with a tendency to develop increasing muscle hypertonicity, curvature of the spine and joint contractures. Physiotherapy and occupational therapy are recommended from an early age. Music therapy has helped numerous patients as well.



“After work, I like to relax by going running with friends. Emilia can tag along with me in the Kimba Cross.”

Andreas, Emilia's father



Kimba Cross  
The sporty companion (page 19)





Art. no. 470G71=5\_AA04\_C  
(complete buggy; seating unit and outdoor mobility base)

## Kimba buggy

Discover the world safely and conveniently

On the way to nursery, the supermarket or therapy – and trips in the car, by bus or on foot: the Kimba buggy is the ideal companion. The Kimba buggy has been upgraded and numerous functions were optimised in cooperation with users, doctors and therapists. The focus was on easy handling and optimised posture support for the child along with a modern, attractive design.

### Options (selection)

- Safety cord
- Reflective colour accents (reflection factor RA1)
- Frame padding
- “Techno” buggy board
- Seating shell interface with foot support assembly
- Drum brake
- Foot support assembly for seating shell interface
- Nappy bag
- Tip-assist: left or right
- Tray
- Pneumatic tyres

Technical data	Size 1	Size 2
Overall width	595 mm	665 mm
Front/rear wheel diameter	170/280 mm	170/280 mm
Push handle (min./max.)	710–1,160 mm	710–1,160 mm
Folding size without seat (LxWxH)	790x595x460 mm	790x665x460 mm
Min. folding size with seat facing forward (LxW xH)	900x595x530 mm	970x665x590 mm
Seat tilt (min./max.)	-40° to +10° or -10° to +40°	-40° to +10° or -10° to +40°
Weight of outdoor mobility base	10.5 kg	11.5 kg
Weight of seating unit	7.5 kg	9.5 kg
Max. load, seating unit*	40 kg	40 kg
Max. load, storage basket*	15 kg	15 kg
Max. load, outdoor mobility base	55 kg	55 kg

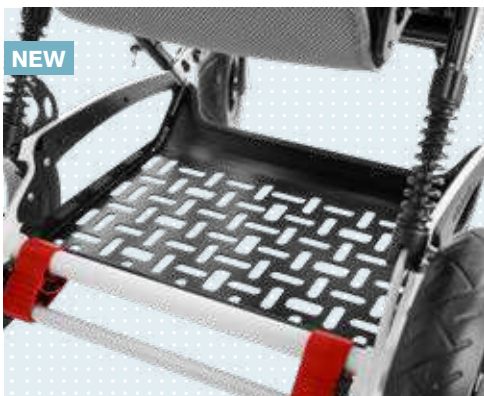
\*The maximum permissible overall weight of the user and load in the storage basket is 47.5 kg (size 1) or 45.5 kg (size 2).

### Inlayfarben



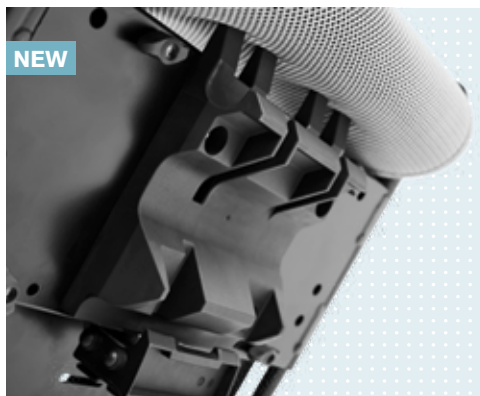
**i** Further product information is available at [www.ottobock.com](http://www.ottobock.com) or directly from your specialist dealer.





NEW

Generous storage space under the seat. Also usable as a platform for respirators.



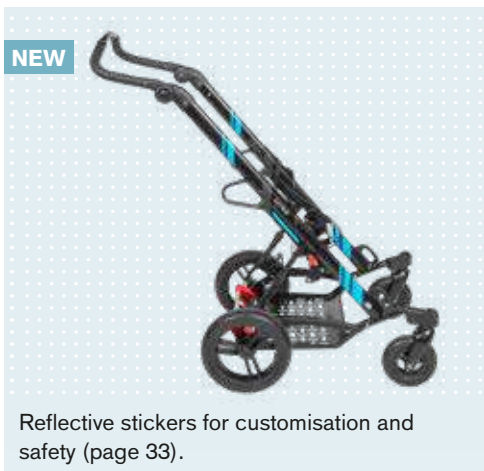
NEW

Optimised seat adapter for especially easy mounting and removal of the seat when loading.



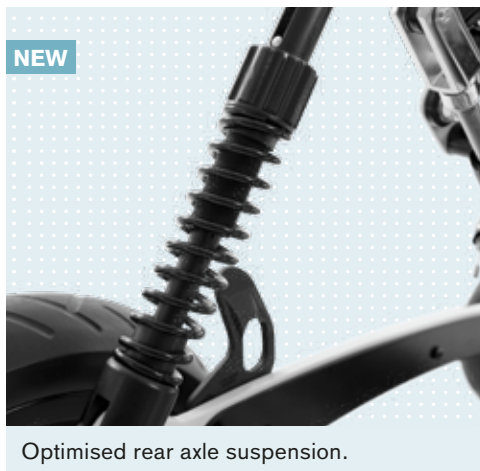
NEW

Tilt activation is positioned close by on the push bar for very convenient operation.



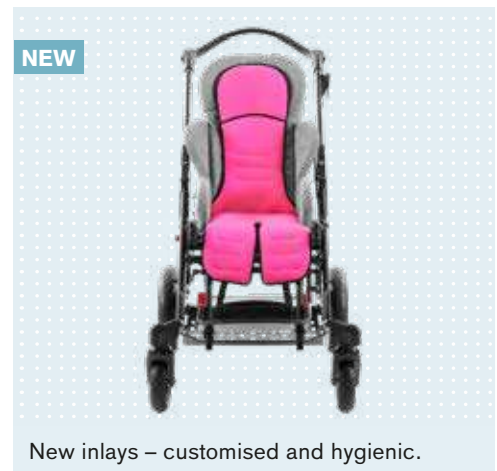
NEW

Reflective stickers for customisation and safety (page 33).



NEW

Optimised rear axle suspension.



NEW

New inlays – customised and hygienic.



NEW

Straightforward and safe back support angle adjustment thanks to locking pin.



The seating unit can be easily mounted in or against the direction of travel, depending on the situation.



NEW

Easy to fold, including automatic folding lock



### Combination of extension effect and inhibition of the pathological spastic pattern

Emilia wears custom orthoses. They provide her with added stability and improve the overall statics thanks to the extension effect. Ideally, she should wear them 23 hours a day to benefit from the combined extension effect and inhibition of the spastic pattern. All beginnings are difficult. Right now she is still practising wearing them, and the daily duration of use keeps getting longer.

"A child's first step is very special for parents. It was an incredible feeling for us to see that the orthoses give our little sunshine enough stability to take steps with some help."  
Andreas, Emilia's father



Custom fabricated orthoses

## The best for your child

### 3D-printed forearm-hand spiral orthosis

The custom fabricated functional orthosis to correct a malposition in the area of the forearm / hand was created using 3D SLS printing. What makes it special is that the optimal position is determined prior to fabrication in a simulation unit (SimBrace®), subsequently maximising the gain in functionality when the orthosis is applied.

### Ankle-foot orthosis with ring-shaped foot socket

Dynamic club / skew foot is one of the most common impairments in children and adults with cerebral palsy. However, this common malposition also occurs with other underlying neuromuscular diseases and disabilities. This is often due to a shortening of the calf musculature. Accompanying malpositions in the lower ankle, such as a skew or club foot, are usually observed as well. The club foot position often becomes more pronounced as the child grows because the muscles and skeleton grow at different rates.

Increased stiffening without extension treatment often leaves surgery as the only option for correction. Therapy using an ankle-foot orthosis with a ring-shaped socket can exhibit high success rates in the treatment of spastic club / skew foot.

Stabilisation of the hand or forearm with an orthosis is one of the most common device fittings. Hand and arm orthoses help make it possible to complete everyday tasks independently using the hands. Depending on the diagnosis, a custom arm orthosis corrects and positions the fingers, thumb, wrist, elbow and / or shoulder.

### Stirrup orthosis

The stirrup orthosis stands out for the ring-shaped foot socket. This defines the shape and volume, ensuring a reliable correction effect in the lower ankle. In contracture situations, the foot structure is enveloped, which ideally prevents the condition from worsening. Extension of the calf musculature is not possible here. In Emilia's case, this orthosis was used for a dynamic club foot position without shortening of the calf musculature.

### POHLIG GmbH – an Ottobock Group company

Emilia's orthoses were fabricated jointly with POHLIG GmbH. For further information about one of Germany's leading specialists for orthopaedic technology, visit [www.pohlig.net](http://www.pohlig.net).



Elastomer spring system

Drum brake

Rear wheels with 18" pneumatic tyres

Foldable and easy to disassemble

Height-adjustable push bar

Frame colour: black

Rigidly mounted front wheel with 16" pneumatic tyre, including splash guard

Frame for mounting the Kimba seating unit size 1 or 2, or a custom seating shell

## Kimba Cross

### The pro for any outing

The sporty Kimba Cross mobility base is designed like a jogger pushchair. It has two rear wheels and one front wheel with BMX tyres. The large wheels are especially well suited for long distances and uneven terrain. It can be readily combined with the Kimba seating unit, custom seating shells or other modular seating systems.

#### Options (selection)

- Clothing guard
- Spoke protectors
- Anti-tipper
- "Techno" buggy board
- Storage bag
- Bicycle adapter/bicycle drawbar (equipment package required according to German Motor Vehicle Safety Standards (StVZO))

#### Technical data

Overall width	610/705 mm (without wheels/with wheels)
Overall length	1,400–1,700 mm
Overall height	750–1,200 mm
Front/rear wheel diameter	400 or 300/450 mm
Folding size	1,000/1,270x610/700x320/480 mm (without wheels/with wheels)
Push handle height	940–1,195 mm
Seat tilt	-2° to +30°
Weight of outdoor mobility base	15.8 kg
Max. load	50 kg



Further product information is available at [www.ottobock.com](http://www.ottobock.com) or directly from your specialist dealer.



### The new Kimba buggy

Mira knows no buggy apart from the Kimba. Her family was one of the first to see and test the new Kimba. Initially, their response was guarded because at first glance, the storage space was the only new addition. But after a few hours of use, the parents recognised and came to truly appreciate all the other enhancements (page 16). Mira felt comfortable in her familiar buggy from the first.



“The Kimba buggy can be quickly stowed and unloaded again too.”

Lisa, Mira's mother

# A completely normal daily routine

A healthy lifestyle is part of Marcel, Lisa and Mira's day-to-day life just as much as sports. Whether running, swimming, cycling, snowboarding or riding, they prefer to spend their free time outdoors. Nor did this attitude towards life change during the pregnancy, which was uneventful. There was no diagnosis of any malformation, disease or disability. Mira's parents were simply looking forward to life as a threesome!

Complications during or after birth can also result in permanent disabilities. That was the case with Mira. She has severe motor development impairments due to unexpected complications during birth. This can be seen in the fact that she has inadequate control over her torso. She can hold her head up on her own but can't grasp in a purposeful way. Mira is now able to eat porridge by mouth despite a swallowing disorder. A central vision disorder also prevents her from making direct visual contact.

Mira's parents, Marcel and Lisa, needed some time to recover from the strain of the birth and Mira's diagnosis. Children shape every aspect of everyday life as it is, but a child who has a physical disability defines your life around the clock. "We are exceptional, mad, maybe also courageous, and have often been told that we are totally different than other families with a child who requires care."

They found everyday helpers based on recommendations from their medical supply company and their own online research.

Mira loves it when people sing and play with her. She likes anything that glints and makes music. Being entertained all day is what she loves the most. But she also likes listening to nursery rhymes or watching Winnie the Pooh. What's more, she has a real sweet tooth and enjoys just about anything sugary.

Spending time outdoors is another of the family's favourite things to do. All three of them love going on outings with their racing bikes and the Kimba Cross. This has also become much less stressful for her mum and dad now that Mira no longer has to ride in the old bicycle trailer. The Kimba Cross is easy to attach to a bike, and Mira is far more relaxed and safer in her familiar, comfortable seating unit.



The reasons for oxygen deficiency during birth are varied and are not fully understood.



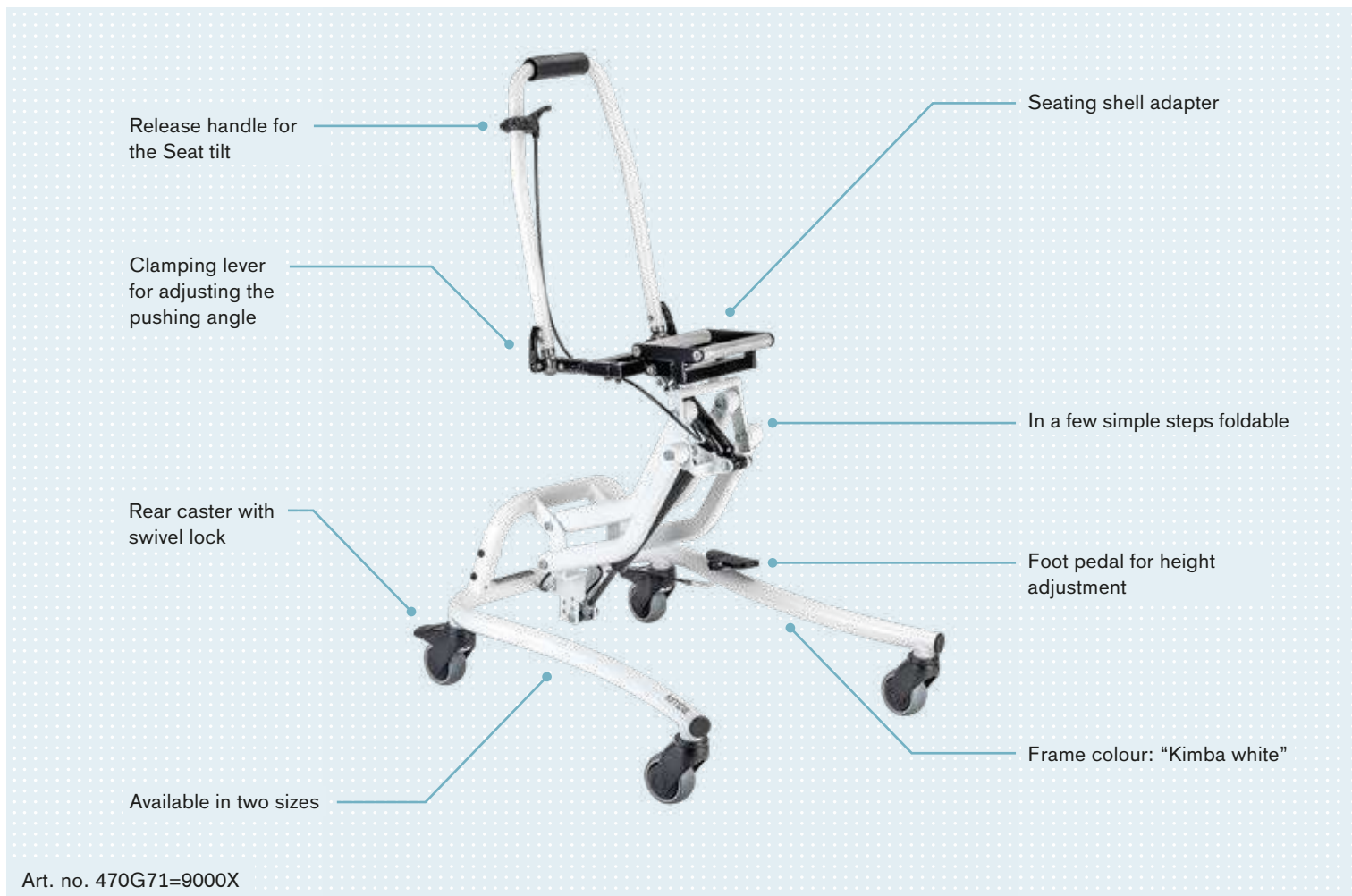
An active, varied day-to-day life is very important to the family. Mira uses a range of different devices to make everyday life as independent and convenient as possible for everyone involved. “When we’re at home, we use the Kimba Home for eating and sometimes for playing as well. The Kimba rehab buggy is our first choice for a relaxed walk, shopping or also eating out.” Mira’s physiotherapist, Tanja, also uses a hip abduction orthosis – the Cosa Active / Junior orthosis (page 24) – alongside therapy.



### Oxygen deficiency during birth

Für alle Eltern ein Alptraum. Ihr Baby, It’s a nightmare for any parent when their baby, who has passed every checkup with flying colours, is affected by oxygen deficiency during birth. Disaster strikes on the way into this world. The child is left with long-term physical and mental impairments. The risk is considerably greater for preemies. Every eighth to tenth child born before the thirtieth week of pregnancy has brain damage. The reasons for oxygen deficiency during birth are varied and not fully understood in many cases. Various early warning systems are being developed around the world.<sup>1</sup>

<sup>1</sup> www.welt.de



Art. no. 470G71=9000X

## Kimba Home

### Integration as equals

The Kimba Home mobility base is designed for indoor use. The seat angle and seat height can be adjusted in just a few seconds. This ensures the child is perfectly integrated and can always interact as an equal – whether they're playing on the floor or eating at a table. On top of that, our Kimba seating units and custom seating shells can be installed in a few simple steps. This way, the child can keep their familiar, individually adapted seating environment.

#### Options (enclosed on delivery)

- Anti-tipper

#### Options for custom seating shell fabrication

- Seating shell interface of Kimba type
- Foot support assembly

Technical data	Size 1	Size 2
Overall width	540 mm	640 mm
Height of seating shell adapter	190–560 mm	190–560 mm
Length of base frame	610 mm	750 mm
Frame height	270 mm	270 mm
Seat angle	-5° to +35°	-5° to +35°
Push handle	1.8 kg	1.8 kg
Weight incl. Push handle	11.8 kg	13.8 kg
Max. load capacity	50 kg	75 kg

**i** Further product information is available at [www.ottobock.com](http://www.ottobock.com) or directly from your specialist dealer.



Art. no. 28L100=\*/28L101=\*

## Cosa Active / Junior

### Inconspicuously effective

The Cosa Active / Junior is referred to as a hip abduction orthosis. If the patient has a scissor gait, the orthosis prevents crossing of the knees and allows for more stable standing and sitting thanks to the abduction pads. This means you or your child need to expend less energy to cover greater distances. The functional orthosis also promotes a physiological gait pattern thanks to the improved pelvic symmetry and increased freedom of movement for the knees. The Cosa Active / Junior is also helpful for those who use a wheelchair – it makes additional wheelchair pommels unnecessary. You can use the orthosis from childhood all the way up to adulthood.

#### Suitable for day or nighttime wear

The Cosa Active / Junior can be worn during the day and at night. It can help to prevent the knees from rubbing together at night in particular.

#### High level of wearer comfort

Soft, breathable material, straps that can be positioned individually and the zip (Cosa Active) – for easy application and removal – all make the orthosis very comfortable to wear

**i** Further product information is available at [www.ottobock.com](http://www.ottobock.com) or directly from your specialist dealer.

	28L100=* Cosa Junior				28L101=* Cosa Active						
Size	80	92	104	116	128	140	152	S	M	L	
<b>Standard sizing</b>	80	92	104	116	128	140	152	164 Women 34 Men 42	Women 36, 38 Men 44, 46	Women 40, 42 Men 48, 50	Women 44, 46 Men 52, 54
<b>User height (cm)</b>	74–86	86–98	98–110	110–122	122–134	134–146	146–158	158–170			
<b>Hip circumference (cm)</b>	57–59	59–62	62–64	64–68	68–72	72–78	78–86	86–96		96–105	105–109
<b>Pad number</b>	1		2		3			4		5	
<b>Thigh circumference (cm)</b>	26–32		32–36		36–44			44–54		54–62	



“Mira has more appointments than her mum and dad put together.”

Lisa, Mira's mother



### Types of therapy

Scientific studies show us that the chances of optimal development are considerably improved if the child is supported with specific therapy methods starting in infancy. Occupational therapy or treatments with therapy dogs can be prescribed alongside this. Parents and other caregivers are closely integrated into the therapy concept in both the Bobath and Vojta methods of physiotherapy. Numerous therapy centres and organisations around the world specialise in different therapy methods. Further information is available online or directly from your specialist dealer or doctor.



Art. no. HR2233=0000\_K

## Kimba indoor mobility base

Integrated at home, in nursery and at school

The Kimba indoor mobility base is a particularly robust and narrow mobility base for seating systems with a user weight of up to 50 kg. It is ideal for use in small or confined rooms.

### Options (selection)

- Push handle
- Foot support assembly
- Parallel or Kimba seating shell interface

**i** Further product information is available at [www.ottobock.com](http://www.ottobock.com) or directly from your specialist dealer.

Technical data	Size 1 + 2
Max. load	50 kg
Overall width	450 mm
Overall length	620–780 mm
Overall height	410–620 mm
Seat tilt	-10° to +25°
Indoor mobility base weight	6.4/6.6 kg

**i** Further product information is available at [www.ottobock.com](http://www.ottobock.com) or directly from your specialist dealer.

## Kimba Inline

### One for two – on the go together

The Kimba Inline is an outdoor mobility base for two seating systems positioned one behind the other. It's a great choice for siblings. For facilities and nurseries, it is also the perfect way to transport two children at the same time. This makes everyday life much simpler for carers.

#### Technical data

Max. load	50 kg
Overall width	640 mm
Front/rear wheel diameter	200/250 mm
Folding size	900x640x480 mm
Push handle height	930–1,030 mm
Seat tilt	-30° to +40°
Weight	10.6 kg

#### Options (selection)

- Foot support assembly for seating shell interface
- Front or rear seating shell interface



# The most common diagnoses

All babies are born with limited abilities and develop continuously day by day. That's why the early years are generally considered the most important time in every child's development. This is when the nervous system, senses, muscles and joints mature along with the child's thoughts and actions. They learn to work together seamlessly, thereby laying the foundation for subsequent stages of development. The most common causes that disrupt this development are cerebral palsy (CP), brittle bone disease, muscular dystrophy and spina bifida.

## The most common diagnosis in the world

Infantile cerebral palsy (CP) is a group of clinical pictures and different levels of movement. It is caused by brain damage at an early stage prior to maturity.

Since the nervous system is not yet mature, clear signs of CP aren't observed in infants in many cases. Abnormalities in physical development, such as reduced muscular strength, only become apparent after the first few months of life. Subsequently, neurological symptoms develop in addition, such as insufficient or excessive basic tension of the muscles (tonicity), difficulties with sitting and limited use of the hands and arms. Often, a final diagnosis can only be made at this point.

The "Gross Motor Functions Classification System" recognised around the world helps doctors and affected families classify the degree of the child's motor

impairment. Therapy goals are established and devices are chosen on this basis. The GMFCS serves as a guideline and can help with various diagnoses. Since every patient is different, relying on just one system is not recommended.<sup>1, 2, 3</sup>

## Brittle bone disease

On average, one child in about 20,000 births is born with brittle bone disease. Osteogenesis imperfecta is a rare congenital disorder of the bone metabolism, resulting in bone instability. In affected individuals, the body cannot produce a certain collagen, or only in an inferior quality. The elasticity and stability of the bone mass are not sufficient without collagen. Standing and walking are impossible for the majority of patients. They are permanently dependent on the protection of devices such as a wheelchair or children's rehab buggy.<sup>1</sup>





There are more than 17,000,000 CP patients worldwide<sup>4</sup>





### **Muscular dystrophy**

Muscular dystrophy occurs worldwide at a frequency of about one affected person per 3,500,000. It is a group of muscular disorders. These hereditary diseases are caused by mutations in the genetic makeup, mostly leading to defects or a lack of proteins occurring in the musculature. The most common cause of muscular dystrophy (MD) in children and adolescents is a congenital lack of or functional change in the muscle protein dystrophin. Various treatment and therapy options are available, depending on the symptoms.<sup>5</sup>

### **Spina bifida**

Spina bifida is a very rare congenital malformation of the spinal cord and spine. It is caused by the failure of the neural tube in the spine to close during the third and fourth weeks of pregnancy. About one out of 1,000 children in Central Europe is born with spina bifida. A distinction is made between two forms of the condition. In the open form (spina bifida aperta), the vertebral arch is split. Parts of the meninges and the spinal cord visibly protrude with a bag-like appearance. The closed form (spina bifida occulta) is usually discovered by chance and, as a rule, is initially asymptomatic. Physiotherapy, orthopaedic devices, rehabilitation devices and corrective surgery can make standing and walking possible.<sup>6</sup>

<sup>1</sup> <https://www.beobachter.ch/gesundheit/krankheit/glasknochenkrankheit-osteogenesis-imperfecta>

<sup>2</sup> <https://www.dgm.org/muskelerkrankungen/progressive-muskeldystrophien>

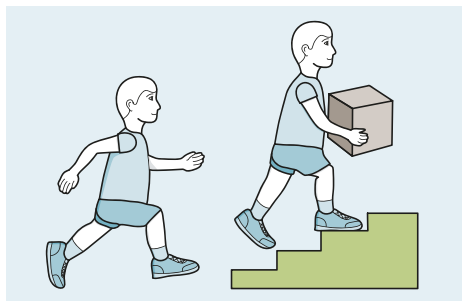
<sup>3</sup> [https://www.tk.de/techniker/gesundheit-und-medizin/orthopaedische-erkrankungen/spina-bifida-offener-ruecken-2017922](https://www.tk.de/techniker/gesundheit-und-medizin/behandlungen-und-medizin/orthopaedische-erkrankungen/spina-bifida-offener-ruecken-2017922)

<sup>4</sup> <http://bkf-petoe.de/>

<sup>5</sup> <https://www.schoen-klinik.de/cerebralparese>

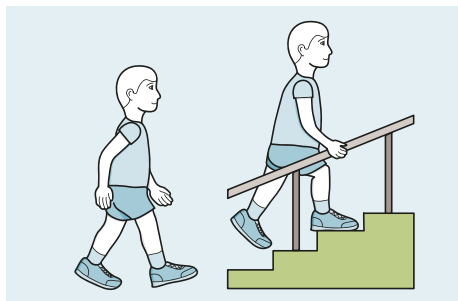
<sup>6</sup> <https://blog.madeformovement.com/de/was-bedeutet-gmfcs-und-wofür-braucht-man-es>

# GMFCS – CP Classification system



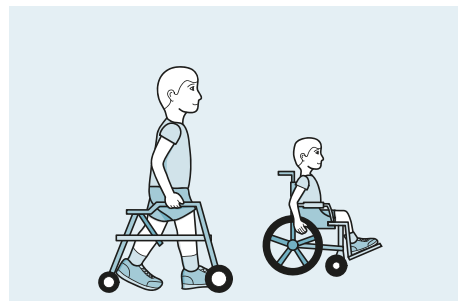
## Level I

- Able to walk indoors and outdoors and climb stairs unassisted.
- Able to perform common activities such as running and jumping.
- Experiences problems with speed, balance and coordination.



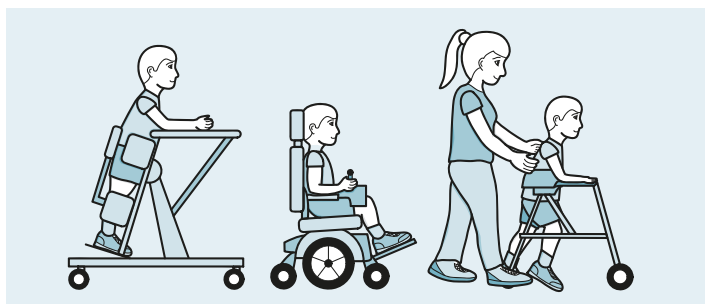
## Level II

- Child can walk indoors and outdoors and climb stairs with a handrail.
- Experiences difficulties with uneven surfaces, slopes or crowds of people.
- Limited ability to run or jump.



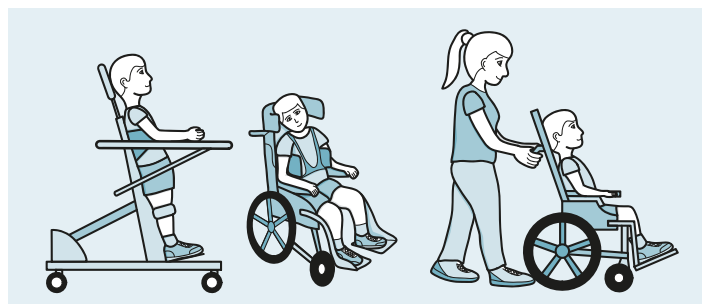
## Level III

- Walks indoors and outdoors on even surfaces with the support of mobility devices.
- May be able to climb stairs with a handrail.
- Additional support of a manual wheelchair required (for longer distances).



## Level IV

- The ability to walk is severely limited even with devices.
- A wheelchair is used most of the time. The wheelchair is user-propelled.
- Independent transfers do not pose a problem.



## Level V

- Has physical impairments that limit voluntary control of movements and the ability to maintain the position of the head and neck against the force of gravity.
- Motor impairments in all areas.
- Independent sitting or standing is not possible, even with adaptive devices.
- Independent walking is not possible, but motor-driven mobility may be (e.g. power wheelchair).<sup>1</sup>



<sup>1</sup> <https://cparf.org/what-is-cerebral-palsy/severity-of-cerebral-palsy/gross-motor-function-classification-system-gmfcs/>



# Modern and high-quality: Kimba padding

The padding material of a buggy has to meet numerous requirements. It needs to support the spine without excessive yielding. At the same time, it must be soft and comfortable. Naturally, it also has to look good and be hygiene-friendly. The Kimba padding and inlays meet all of these requirements.

## Available inlay colours



Grey



Blue



Green



Pink

## Benefits of the new inlays

- ✓ **Hygiene-friendly:** The inlays can be changed quickly and are washable, so the Kimba is always ready to use.
- ✓ **Individual:** Something to suit every taste. The covers are available in various colours.
- ✓ **Quality:** We use breathable and especially cuddly fabrics for outstanding sitting comfort. Naturally, the requirements for medical devices are also met by the fabrics.



In a few steps to the 100 % personal inlay. The sewing instructions you can get on [www.ottobock.de](http://www.ottobock.de) or directly from your dealer.



# Individual Ways

Optionally, you can order the Kimba Buggy with self-reflective stickers. Choose between two variants – “classic” or “sporty”, each in 3 colours, matching the available inlays. This is how the Kimba’s design can be designed individually to your own taste. In addition, the reflectors increase the safety of dark days or at night.

## Available sticker colours



Grey



Blue



Green



Adhesive variant “classic”



Adhesive variant “sporty”

# More Ottobock devices for children

Are you looking for something specific? We offer appropriate devices for treating your child's chronic or acute disability, thereby helping your child play to their heart's content to the greatest possible extent.

---

## Nurmi Neo

Art. no. HR2426=0000\_K

Adaptable walker – with various positioning options to optimise support.



---

## Walk Star

Art. no. RR160=0000\_K

A lifelong companion – thanks to a structure that grows with the child.



---

## KidWalk

Art. no. 420R119=20000\_K

The dynamic walking aid gives children the support they need to discover the world independently, right from day one.



---

## Skippi

Art. no. 490E55=00000\_K

The compact power wheelchair – for even more independence and autonomy thanks to power assistance.



**i** Further product information is available at [www.ottobock.com](http://www.ottobock.com) or directly from your specialist dealer.

---

## Avantgarde Teen 2 / Teen 2 VR

Art. no. 480F45=30000\_K / 480F45=40000

The flexible wheelchair for active use – can be folded up for transport in just a few steps to allow for more flexibility in daily life.



---

## Bravo Racer

Art. no. 480A60=00000\_K

The adaptable wheelchair for active use – with various positioning options and good driving comfort.



---

## StartM6 Junior

Art. no. 480F53=60000\_K

The folding lightweight wheelchair – for children who require a wheelchair on a temporary basis only.



---

## Robby bathing support

Art. no. HR510X0000-027

Everything in reach at bath time. Thanks to its low centre of gravity, comparatively little water is needed in the bath when using the Robby bathing support, and it's ideal for use at home or in facilities.



┌ With compliments from: ┐

└ ───────────────────────────┘