

Juvo B4 Power wheelchair.

☐ Quotation ☐ Order

Billing Address

PO no.

Cust Name

Street no.

PC, County

Shipping address (if different from billing address)

Cust Name

Street no.

PC, County

Name Date Signature



Rear-wheel drive
figure shows add charge options



Rear-wheel drive
figure shows add charge options



Rear-wheel drive
figure shows add charge options

Article number: 490E75=1_AS01_C
max. load capacity: xxx kg (standard equipment)

Base Price - £4305.00

Please email all orders to
Ottobockmobility@ottobock.com

Valid from 01.01.2025 to 31.12.25
Please ensure you are using the lastet order form

By placing the order, you agree to comply with the instructions for use/service manuals for accessories and products of other manufacturers when combining them with an Ottobock product, in addition to the instructions for use/ service manuals of the respective Ottobock products. Also you confirm to have read, understood and accepted, our general terms and conditions. In addition, you agree, upon placing an order, to conduct your own conformity assessment or approval in accordance with national requirements if and when you implement modifications or attachments that do not meet the specifications of Ottobock instructions for use/service manuals.
Wheelchairs with CLT package cannot be returned or exchanged

The number codes contained in this order form are not intended to be used as article numbers for spare parts orders.
Please scan the QR code to access the spare parts catalogue for any spare parts orders.

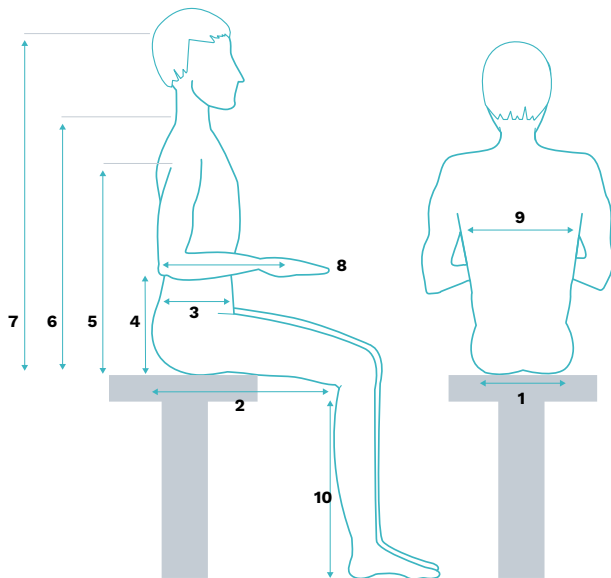


Juvo B4 Power wheelchair.

Basic data (voluntary information)

Gender ☐ male ☐ female ☐ divers

Indication



Mandatory information*

User height [cm]	
User weight [kg]	
1 Seat width [cm]	
2 Seat depth [cm]	
3 Trunk depth [cm]	
4 Arm support height [cm]	
5 Armpit height [cm]	
6 Shoulder height [cm]	
7 Head height [cm]	
8 Forearm length to middle of palm	
9 Trunk width [cm]	
10 Lower leg length [cm]	

* This information will help to support user-oriented settings and product development. Ottobock guarantees the confidential and purely internal use of these data.

Product classification

<input type="radio"/> EA001	Category A (Indoor, wheels: 12"/8")	£4305.00
<input type="radio"/> EA002	Category B (In-/Outdoor) (electric lighting mandatory in Europe)	£4305.00
<input type="radio"/> EA013	Category A (Indoor, wheels: 14"/9", 14"/10")	£4305.00

Max. user weight (mandatory information; user + personal luggage, information required for chassis suspension)

<input type="radio"/>	70 kg
<input type="radio"/>	100 kg (for category A up to 12.5"/8")
<input type="radio"/>	113 kg (not possible in combination with category A (indoor) see exclusions 2.1)
<input type="radio"/>	125 kg (not possible in combination with category A (indoor) see exclusions 2.1)
<input type="radio"/>	140 kg (not possible in combination with category A (indoor) see exclusions 2.1)
<input type="radio"/>	150 kg (not possible in combination with category A (indoor) see exclusions 2.1)
<input type="radio"/>	160 kg (not possible in combination with category A (indoor) see exclusions 2.1)

Seating systems (mandatory information)

<input type="radio"/> EC001	Standard seat Junior (max. user weight 75 kg)	£152.00
<input type="radio"/> EC002	Standard seat Small	Inclusive
<input type="radio"/> EC003	Standard seat Large	Inclusive
<input type="radio"/> EC004	Standard seat XL	£195.00
<input type="radio"/> EC005	VAS (Vario Adjust Seat) (possible only in combination with max. load capacity <= 125 kg) see exclusions 3.3)	£449.00

Juvo B4 Power wheelchair.

Settings for Standard seat Junior see exclusions 3.2) 4.0) 5.0)

Seat width SW in cm	<input type="radio"/> 34	<input type="radio"/> 36	<input type="radio"/> 38	<input type="radio"/> 40
Seat depth SD in cm	<input type="radio"/> 34	<input type="radio"/> 36	<input type="radio"/> 38	<input type="radio"/> 40
Back support height BH 47 cm (adjustable to 42 cm or 37 cm)				

Settings for Standard seat Small see exclusions 3.1) 4.0) 4.1) 4.4) 5.0)

Seat width SW in cm	<input type="radio"/> 38	<input type="radio"/> 40	<input type="radio"/> 42		
Seat depth SD in cm	<input type="radio"/> 38	<input type="radio"/> 40	<input type="radio"/> 42	<input type="radio"/> 44	<input type="radio"/> 46
Back support height BH 55 cm (adjustable to 50 cm or 45 cm)					

Settings for Standard seat Large see exclusions 4.0) 5.0)

Seat width SW in cm	<input type="radio"/> 44	<input type="radio"/> 46	<input type="radio"/> 48		
Seat depth SD in cm	<input type="radio"/> 42	<input type="radio"/> 44	<input type="radio"/> 46	<input type="radio"/> 48	<input type="radio"/> 50
Back support height BH 55 cm (adjustable to 50 cm or 45 cm)					

Settings for Standard seat XL see exclusions 4.0) 5.0)

Seat width SW in cm	<input type="radio"/> 50	<input type="radio"/> 52	<input type="radio"/> 54	<input type="radio"/> 56	
Seat depth SD in cm	<input type="radio"/> 42	<input type="radio"/> 44	<input type="radio"/> 46	<input type="radio"/> 48	<input type="radio"/> 50
Back support height BH 55 cm (adjustable to 50 cm or 45 cm)					

Settings for VAS see exclusions 4.0) 5.0)

Seat width SW in cm	<input type="radio"/> 38 <input type="radio"/> 50	<input type="radio"/> 40 <input type="radio"/> 52	<input type="radio"/> 42 <input type="radio"/> 54	<input type="radio"/> 44	<input type="radio"/> 46	<input type="radio"/> 48
Seat depth SD in cm	<input type="radio"/> 38 <input type="radio"/> 50	<input type="radio"/> 40 <input type="radio"/> 52	<input type="radio"/> 42 <input type="radio"/> 54	<input type="radio"/> 44 <input type="radio"/> 56	<input type="radio"/> 46 <input type="radio"/> 58	<input type="radio"/> 48

Back support height BH 55 cm (adjustable to 53 cm, 51 cm or 45 cm)

☐ Lower leg length LLL cm (15 ... 47 cm) (without Seat cushion)

Overview about seating systems, seat width and seat depth

Seat width

Seat	Seat width SW [cm]											
	34	36	38	40	42	44	46	48	50	52	54	56
Standard seat Junior	<input type="radio"/>	<input type="radio"/>	<input type="radio"/>	<input type="radio"/>								
Standard seat Small			<input type="radio"/>	<input type="radio"/>	<input type="radio"/>							
Standard seat Large						<input type="radio"/>	<input type="radio"/>	<input type="radio"/>				
Standard seat XL									<input type="radio"/>	<input type="radio"/>	<input type="radio"/>	<input type="radio"/>
VAS			<input type="radio"/>	<input type="radio"/>	<input type="radio"/>	<input type="radio"/>	<input type="radio"/>	<input type="radio"/>	<input type="radio"/>	<input type="radio"/>	<input type="radio"/>	

Juvo B4 Power wheelchair.

Seat depth

Seat	Seat depth SD [cm]												
	34	36	38	40	42	44	46	48	50	52	54	56	58
Standard seat Junior	○	○	○	○									
Standard seat Small			○	○	○	○	○						
Standard seat Large					○	○	○	○	○				
Standard seat XL					○	○	○	○	○				
VAS			○	○	○	○	○	○	○	○	○	○	○

Seat cushion (only possible in combination with standard seat or VAS, mandatory information) see exclusions 9.0) 9.1)

○ EC011	Without seat cushion	Inclusive
○ EC012	Seat cushion, sblack cover (functional height 5 cm)	Inclusive
○ EC013	Seat cushion with incontinence cover (functional height 5 cm)	£103.00
○ EC034	Livo (max. user weight 125 kg; functional height 5 cm) see exclusions 3.3) 7.6)	£85.00
○ EC035	Evoflair (max. user weight 200 kg; functional height 8 cm) see exclusions 7.7)	£303.00
○ EC014	Terra (up to 150 kg; functional height 6 cm) see exclusions 7.1) 7.2)	£207.00
○ EC015	Terra Aquos (up to 150 kg; functional height 6 cm) see exclusions 7.1) 7.2)	£233.00
○ EC016	Terra Flair (up to 150 kg; functional height 6 cm) see exclusions 7.1) 7.3)	£466.00
○ EC018	Cloud (functional height 11 cm) see exclusions 7.5)	£571.00
○ EC020	Contour, flach konturiert, Dartex fabric cover (functional height 7 cm) see exclusions 7.8) bis 7.11)	£252.00
○ EC021	Contour, tief konturiert, Dartex fabric cover (functional height 9 cm) see exclusions 7.8) bis 7.11)	£252.00

Please refer to our seat cushion brochure for information on additional seat cushions.

Accessories for Contour seat cushion with Dartex fabric cover

○ EC 039		Inclusive
----------	--	-----------

Back support version/with contour (mandatory information)

○ ED032	Without back support upholstery	Inclusive
○ ED033	Back support upholstery, adaptable	Inclusive
○ ED034	Back support pad flat contoured, Dartex fabric cover (SD reduction by approx. 2 cm) exclusions see 7.8) 7.9)	£359.00
○ ED035	Back support pad deep contoured, Dartex fabric cover (SD reduction by approx. 2 cm) exclusions see 7.8) 7.9)	£359.00
○ ED050	Back support pad flat contoured AD, Dartex fabric cover (adaptable, SD reduction by approx. 2 cm) exclusions see 9.1)	£420.00
○ ED051	Back support pad deep contoured AD, Dartex fabric cover (adaptable, SD reduction by approx. 2 cm) exclusions see 9.1)	£420.00
○ ED036	Baxx aluminium flat top back support (max. user weight 113 kg, installation accessories Quick Release is released for transportation in a vehicle, SD reduction by approx. 2 cm, back support width = chosen seat width) exclusions see 3.3) 9.1) 9.3)	£694.00

Juvo B4 Power wheelchair.

Accessories for back support pad, contoured

<input type="radio"/>	ED039	Side panels (only for back support pad deep contoured) exclusions see 10.0)	£95.00
<input type="radio"/>	ED040	Lumbar support exclusions see 11.1)	£72.00

Accessories for arm support exclusions see 12)

<input type="radio"/>	EL021	Padded covers for arm supports exclusions see 12.1)	£94.00
<input type="radio"/>	EL022	Padded covers for clothing guard	£72.00

Back support height for Baxx exclusions see 14.0) 14.1)

<input type="radio"/>	ED041	High (18"/46 cm)	Inclusive
<input type="radio"/>	ED042	Extra high (20"/51 cm)	Inclusive

Back support contour for Baxx exclusions see 14.0) 14.1)

<input type="radio"/>	ED043	Active (2,5"/6 cm)	Inclusive
<input type="radio"/>	ED044	Deep (4"/10 cm)	£29.00
<input type="radio"/>	ED045	Extra deep (6"/15 cm)	£56.00

Colour for Baxx (possible only in combination with Baxx Aluminium Flat Top back support; mandatory information) see exclusions 14.0) 14.1)

<input type="radio"/>	ED005	Sparkle light orange	Inclusive	<input type="radio"/>	ED014	Candy red	Inclusive
<input type="radio"/>	ED009	Vinho Sparkle	Inclusive	<input type="radio"/>	ED021	Sparkle granny-smith	Inclusive
<input type="radio"/>	ED010	Marine blue	Inclusive	<input type="radio"/>	ED023	White RAL 9016	Inclusive
<input type="radio"/>	ED013	Jet black RAL 9005 matte	Inclusive				

Seat inclination (pre-tilt)

<input type="radio"/>	-3° (not possible in combination with EC005) see exclusions 17.1)
<input type="radio"/>	0°
<input type="radio"/>	3° (not possible in combination with EC005 möglich) see exclusions 17.1)
<input type="radio"/>	6°
<input type="radio"/>	9°

Power seat adjustment (only possible in combination with seat inclination 0°)

<input type="radio"/>	EC025	Power seat tilt 45° with centre of gravity shifting (max. load capacity: VAS 100 kg, standard-/contour seat 140 kg) see exclusions 3.1) 18.1) 24.9)	£860.00
<input type="radio"/>	EC026	Power seat height adjustment 35 cm (max. load capacity: VAS 100 kg, standard-/contour seat 140 kg; not possible in combination with EU060 = VR2 (90A) or EU051 = VR2 (70 A) see exclusions 3.1) 18.1) 24.9)	£2374.00
<input type="radio"/>	EC027	Power seat height adjustment 35 cm with 45° seat tilt, with centre of gravity shifting (max. load capacity: VAS 100 kg, standard-/contour seat 140 kg; not possible in combination with EU060 or EU051) see exclusions 3.1) 18.1) 24.9)	£2774.00
<input type="radio"/>	EC028	Power seat tilt 20° (max. load capacity: standard-/contour seat 140 kg, not possible in combination with EC005) see exclusions 3.1) 17.1) 18.1)	£600.00

Seat adjustment accessories

<input type="checkbox"/>	ES307	Stabilisation for seat height adjustment see exclusions 68.1)	£78.00
--------------------------	-------	---	--------

Juvo B4 Power wheelchair.

Caster fork (mandatory information)

<input type="radio"/> EF001	Suspension (not possible in combination with EF007 and EF008) exclusions see 2.1)	£257.00
<input type="radio"/> EF002	No suspension	Inclusive

Caster wheels (mandatory information)

<input type="radio"/> EF005	9" pneumatic, puncture-resistant see exclusions 2.1)	Inclusive
<input type="radio"/> EF006	9" puncture-proof see exclusions 2.1)	Inclusive
<input type="radio"/> EF007	10" pneumatic, puncture-proof (not possible in combination with EF001) see exclusions 2.1) 20.1)	Inclusive
<input type="radio"/> EF008	10" puncture-proof (not possible in combination with EF001) see exclusions 2.1) 20.1)	Inclusive
<input type="radio"/> EF004	8" pneumatic, puncture-proof (not possible in combination with EG003) see exclusions 20.2)	£74.00

Drive wheels (mandatory information)

<input type="radio"/> EG001	14" pneumatic, puncture-resistant see exclusions 2.1)	Inclusive
<input type="radio"/> EG002	14" puncture-proof see exclusions 2.1)	Inclusive
<input type="radio"/> EG003	12" puncture-proof (not possible in combination with EF004) see exclusions 20.2)	£165.00

Tyre colour (mandatory information)

<input type="radio"/> EG011	Grey	Inclusive
<input type="radio"/> EG012	Black (not possible in combination with EG003 and EF004) see exclusions 22.1)	Inclusive

Tread (mandatory information)

<input type="radio"/> EG013	Ribs (only with tyre colour grey) see exclusions 23.1)	Inclusive
<input type="radio"/> EG014	Lugs (not possible in combination with wheels 12" and 8") see exclusions 22.1)	Inclusive
<input type="radio"/> EG015	Caster wheels with ribs, drive wheels with lugs (not possible in combination with EG003 and EF004) see exclusions 22.1) 23.1)	Inclusive

Back support angle adjustment (mandatory information)

<input type="radio"/> ED046	Mechanical in increments (standard seat: 0/10/20/30° or -9/1/11/21°; VAS: -5/0/10/20/30°)	Inclusive
<input type="radio"/> ED047	Power (30°)	£733.00

Mounting kit for head/neck support

<input type="radio"/> EL001	Gooseneck	£136.00
<input type="radio"/> EL002	Multi-axis, offset	£126.00
<input type="radio"/> EL003	Multi-axis, straight	£121.00
<input type="radio"/> EL031	UniLink holder for head support, multi-axis (suitable only for Advanced line head supports; not possible in combination with EL006, EL007, EL013 to EL016)	£251.00

Accessories UniLink see exclusions 69.0)

<input type="radio"/> EL039	UniLink extension element, 38 mm (may be used to compensate the distance at kyphotic head posture)	£87.00
<input type="radio"/> EL038	UniLink extension element, 50 mm (may be used to compensate the distance at kyphotic head posture)	£64.00
<input type="radio"/> EL040	UniLink extension element, 76 mm (may be used to compensate the distance at kyphotic head posture)	£87.00

Juvo B4 Power wheelchair.

Seat height (at 0° seat inclination, without seat cushion, suspension fully extended/without user, mandatory information)

Wheels		1.1)	1.1)	1.2)	1.3)	1.1)	1.2)	1.3)	1.1)	1.1)	1.2)	1.3)	1.2)	1.1)	1.2)	1.3)	1.3)	1.1)	1.2)	1.3)
Seat height	cm	38	40			42,5			44	45			46	47,5			48,5	50		
	inch	14,6	15,6			16,6			17,2	17,6			18	18,6			19	19,5		
Notices and exclusions		24.37) 24.32) 24.4) 24.5) 24.14) 24.0) 24.1) 24.2) 24.21)	24.37) 24.33) 24.16) 24.0) 24.17) 24.13) 24.28) 24.2) 24.14) 24.3)		24.37) 24.31) 24.29) 24.25) 24.17) 24.27) 24.15) 24.0) 24.11) 24.9) 24.2) 24.3)		24.37) 24.34) 24.4) 24.0) 24.10) 24.1) 24.6)		24.37) 24.31) 24.27) 24.26) 24.0) 24.2)		24.37) 24.0) 24.7) 24.6)		24.37) 24.36) 24.24) 24.21) 24.0) 24.20) 24.19) 24.18) 24.0) 24.2)		24.37) 24.0) 24.8) 24.6)		24.37) 24.35) 24.23) 24.22) 24.0) 24.12) 24.0) 2.1) 24.3) 24.2)			
Standard seat		□ 2.2)	□	□		□	□	□		□	□	□		□	□	□			□	□
VAS			□ 2.2)			□		□		□	□	□			□	□				
Standard seat, tilt 20°			□			□	□			□	□	□		□	□	□			□	□
Standard seat, tilt 45°								□ 2.2)					□				□			
VAS, tilt 45°								□ 2.1)					□				□			
Standard seat, seat lift 35 cm + tilt 45°								□ 2.1)					□				□			
VAS, seat lift 35 cm + tilt 45°													□				□			

Wheels

- 1.1) 8"/12,5"
 1.2) 9" caster wheels
 1.3) 9" caster wheels with suspension or 10" wheels

Weight

- 2.1) max. 75 kg
 2.2) max. 100 kg

□	combination possible
■	combination not possible

Head/neck supports see exclusions 27.0) 27.1)

Care line

○ EL006	Head support, small see exclusions 27.2)	£95.00
○ EL007	Head support, large see exclusions 27.2)	£95.00
○ EL013	Head/neck support, small see exclusions 27.2)	£90.00
○ EL014	Head/neck support, large see exclusions 27.2)	£90.00
○ EL015	Head/neck support X-shape, small see exclusions 27.2)	£109.00
○ EL016	Head/neck support X-shape, large see exclusions 27.2)	£109.00

Advanced line

○ EL033	Comfort Plus, size S	£168.00
○ EL034	Comfort Plus, size M	£194.00
○ EL035	Comfort Plus, size L	£194.00
○ EL036	Combo (3-pad), size S	£333.00
○ EL037	Combo (3-pad), size L	£347.00

Juvo B4 Power wheelchair.

Belts see exclusions 28.0)		
<input type="radio"/>	EP001	Lap belt standard Inclusive
<input type="radio"/>	EP002	2-point lap belt, padded, metal buckle £159.00
<input type="radio"/>	EP003	2-point lap belt, padded, plastic buckle £144.00
<input type="radio"/>	EP020	2-point lap belt with metal buckle and rewinder (buckle on side of joystick) see exclusions 7.8) 28.1) £244.00
Chest/shoulder harnesses		
<input type="radio"/>	EP005	Dynamic harness, size S £207.00
<input type="radio"/>	EP006	Dynamic harness, size M £207.00
<input type="radio"/>	EP007	Dynamic harness, size L £207.00
<input type="radio"/>	EP008	Sternum harness, size S £198.00
<input type="radio"/>	EP009	Sternum harness, size M £198.00
<input type="radio"/>	EP010	Sternum harness, size L £198.00
<input type="radio"/>	EP011	Slimline sternum harness, size S £192.00
<input type="radio"/>	EP012	Slimline sternum harness, size M £192.00
<input type="radio"/>	EP013	Slimline sternum harness, size L £192.00
<input type="radio"/>	EP014	Shoulder harness, size S £213.00
<input type="radio"/>	EP015	Shoulder harness, size M £213.00
<input type="radio"/>	EP016	Shoulder harness, size L £213.00
VAS accessories see exclusions 9.1)		
<input type="radio"/>	ED048	Push handles £72.00
<input type="radio"/>	ES302	Thigh lateral supports, size M (1 pair of outer thigh lateral supports with UniLink mounting materials multi-axis adjustment) see exclusions 3.1) 30.1) £755.00
<input type="radio"/>	ES303	Thigh lateral supports, size S (1 pair of outer thigh lateral supports with UniLink mounting materials multi-axis adjustment) see exclusions 3.1) 30.2) £755.00
Arm supports		
<input type="radio"/>	EE023	Standard Inclusive
<input type="radio"/>	EE024	Flip-up (effective seat width +/- 1 cm per side; on Standard seat Small, SW 42 cm; Standard seat Large, SW 48 cm; Standard seat XL, SW 54 cm; VAS plus 2 cm; max. user weight: 125 kg; not in combination with EC001) see exclusions 3.3) 7.8) 24.5) 67.1) bis 67.4) £276.00
Leg support version		
<input type="radio"/>	EB011	Standard (information LLL required) see exclusions 7.8) 31.1) 31.6) 31.7) 31.8) Inclusive
<input type="radio"/>	EB001	Standard (new design) see exclusions 31.1) 31.7) 31.8) £229.00
<input type="radio"/>	EB002	Mechanically elevating with length adjustment (max. user weight 140 kg; not available for LLL < 21 cm; not in combination with EB012, EB009) see exclusions 3.1) 31.1) bis 31.4) 31.7) 31.8) £638.00
<input type="radio"/>	EB003	Power elevating with length adjustment and separate control (max. load 140 kg; not available for LLL < 21 cm; not in combination with EB012, EB009) see exclusions 3.1) 31.1) bis 31.4) 31.7) 31.8) £1299.00
<input type="radio"/>	EB004	Power elevating with length adjustment and simultaneous control (not available for LLL < 21 cm; not in combination with EB012) see exclusions 31.1) bis 31.4) 31.7) 31.8) £1299.00
<input type="radio"/>	EB005	Without leg supports see exclusions 31.5) Inclusive

Juvo B4 Power wheelchair.

Foot plate version see exclusions 32.0) 32.1)

<input type="radio"/> EB006	Individual, plastic foot plates (max. load 140 kg; not available on elevating leg supports; not in combination with EB002, EB003, EB004) see exclusions 3.1) 31.6) 32.2) bis 32.4)	Inclusive
<input type="radio"/> EB007	Individual aluminium foot plates, new design (max. user weight 160 kg; not in combination with EB011, EB001) see exclusions 32.6) bis 32.8) 32.10)	£276.00
<input type="radio"/> EB009	Single-panel, aluminium foot plate (max. user weight 160 kg; not in combination with EB002, EB003) see exclusions 32.6) bis 32.9)	£161.00

Leg support accessories

<input type="radio"/> EB010	Lateral leg pad (for mechanical and power elevating leg support adjustment, pair) see exclusions 33.1)	£235.00
<input type="radio"/> EB017	Lock for single panel aluminium foot plate (only possible in combination with EB009) see exclusions 33.2) 33.3) 33.4)	£85.00
<input type="radio"/> EB022	Amputation leg support, right see exclusions 3.1) 33.5)	£641.00
<input type="radio"/> EB023	Amputation leg support, left see exclusions 3.1) 33.5)	£641.00

Batteries

<input type="radio"/> EU036	AGM 56 Ah (C5) / 60,4 Ah (C20)	Inclusive
<input type="radio"/> EU032	Gel 63 Ah (C5) / 74 Ah (C20)	£651.00
<input type="radio"/> EU500	Gel 62 Ah (C5) / 79,6 Ah (C20) Basic	£651.00

Battery charger

<input type="radio"/> EU040	Without battery charger	Inclusive
<input type="radio"/> EU041	Battery charger 8 A, fanless (suitable only for batteries with 56 Ah (C5)) see exclusions 35.3) 35.4)	Inclusive
<input type="radio"/> EU044	Battery charger 10 A, fanless (IP54) (suitable for batteries 56 Ah (C5) and 63 Ah (C5)) see exclusions 35.2)	£286.00
<input type="radio"/> EU046	Battery charger 10 A, with fan (suitable for batteries 56 Ah (C5) and 63 Ah (C5))	£298.00
<input type="radio"/> EU042	Battery charger 12 A, incl. external charging receptacle (magnetic, installation side right) see exclusions 35.4)	£506.00

Additional charging receptacle

<input type="radio"/> EU043	External magnetic charging receptacle (installation side right; possible only with EU042 see exclusions 36.1)	£205.00
-----------------------------	--	---------

Wheelchair colour (colour for caster fork and metal strip; frame colour: KTL black; mandatory information)

<input type="radio"/> 000	Without coloured caster wheel swing arm cover and without coloured metal strut	Inclusive	<input type="radio"/> 013	Jet black RAL 9005 matte	Inclusive
<input type="radio"/> 005	Sparkle light orange	Inclusive	<input type="radio"/> 014	Candy red	Inclusive
<input type="radio"/> 009	Vinho Sparkle	Inclusive	<input type="radio"/> 021	Sparkle granny-smith	Inclusive
<input type="radio"/> 010	Marine blue	Inclusive	<input type="radio"/> 023	White RAL 9016	Inclusive

Chassis accessories

<input type="radio"/> EA010	Splash guard for drive wheels see exclusions 2.1) 39.5) 39.6)	£119.00
<input type="radio"/> EA011	Splash guard for caster wheels see exclusions 2.1)	£70.00

Caster wheel swivel lock

<input type="radio"/> EF020	Mechanical	£472.00
-----------------------------	-------------------	---------

Juvo B4 Power wheelchair.

Chassis safety accessories

<input type="radio"/>	EF021	Curb climbing assist see exclusions 2.1)	£381.00
<input type="radio"/>	ES002	Kit for vehicle transport (not possible in combination with ED036; max. load capacity 140 kg) see exclusions 3.1) 41.1) 41.3)	Inclusive
<input type="radio"/>	ES013	Ottobock installation kit for Dahl docking system (not possible in combination with EA001 and EF021; max. load capacity 140 kg) see exclusions 2.1) 3.1) 24.5) 41.1) 41.2)	£119.00

General accessories

<input type="checkbox"/>	ES003	Pocket for mobile phone	£59.00
<input type="checkbox"/>	ES004	Luggage carrier see exclusions 2.1) 3.1)	£264.00
<input type="checkbox"/>	ES005	Crutch holder	£136.00
<input type="checkbox"/>	ES006	Rear-view mirror (installation side across from control panel side, not possible in combination with ES012 möglich) see exclusions 42.1)	£202.00
<input type="checkbox"/>	ES007	Tool kit	£70.00
<input type="checkbox"/>	ES010	Beverage holder	£30.00
<input type="checkbox"/>	ES011	Airman pump see exclusions 42.4)	£285.00
<input type="checkbox"/>	ET001	External horn	£553.00
<input type="checkbox"/>	ES012	Therapy tray (swivel mechanism across from control panel side; not possible in combination with ES006 möglich) see exclusions 42.2)	£465.00
<input type="checkbox"/>	EU095	Hand warmer (single hood for handmodule) see exclusions 42.3)	£1433.00
<input type="checkbox"/>	ES023	Backpack hooks (at rear)	£87.00
<input type="checkbox"/>	ES305	Backpack with Ottobock logo	£63.00
<input type="checkbox"/>	ES306	Catheter bag, large	£46.00

Receptacle for external power supply, right

<input type="radio"/>	ET002	12 V see exclusions 43.1) 43.4)	£355.00
<input type="radio"/>	ET003	24 V see exclusions 43.2)	£143.00
<input type="radio"/>	ET004	USB see exclusions 43.3)	£160.00

Lighting see exclusions 44.0)

<input type="radio"/>	ES021	Electric lighting according to German Motor Vehicle Safety Standards (StVZO)	£543.00
-----------------------	-------	---	---------

Control device

<input type="radio"/>	EU059	VR2 (70 A), without power functions and lighting (recommended for load capacity up to 140 kg) see exclusions 46.1) 46.2) 46.4)	Inclusive
<input type="radio"/>	EU060	VR2 (70 A), max. 2 power functions and lighting possible (recommended for load capacity up to 140 kg, not possible in combination with EC026 or EC027) see exclusions 46.2) 46.3) 46.5) 46.8)	Inclusive
<input type="radio"/>	EU050	VR2 (90 A), without power functions and lighting (recommended for load capacity up to 160 kg) see exclusions 2.1) 46.1) 46.4)	Inclusive
<input type="radio"/>	EU051	VR2 (90 A), max. 2 power functions and lighting possible (recommended for load capacity up to 160 kg, not possible in combination with EC026 or EC027) see exclusions 2.1) 46.3) 46.5) 46.8)	£202.00
<input type="radio"/>	EU052	TEN° (90 A), 1 power function, choose option EU056 for more power functions, lighting possible (recommended for load capacity up to 160 kg)	£937.00
<input type="radio"/>	EU058	R-net LED-L (90 A), 1 power function, choose option EU056 for more power functions, lighting possible (recommended for load capacity up to 160 kg)	£649.00

Juvo B4 Power wheelchair.

TEN° control panel (only possible in combination with EU052) see exclusions 47.0) 47.1)

<input type="radio"/>	EU065	Standard colour Shimano matte	Inclusive
<input type="radio"/>	EU066	Colour selectable	Inclusive

Colour for TEN° control panel (only possible in combination with EU066) see exclusions 48.0) 48.1)

<input type="radio"/>	EU005	Sparkle light orange	Inclusive	<input type="radio"/>	EU014	Candy red	Inclusive
<input type="radio"/>	EU009	Vinho Sparkle	Inclusive	<input type="radio"/>	EU021	Sparkle granny-smith	Inclusive
<input type="radio"/>	EU010	Marine blue	Inclusive	<input type="radio"/>	EU023	White RAL 9016	Inclusive
<input type="radio"/>	EU013	Jat black RAL 9005 matte	Inclusive				

Control panel button (only possible in combination with EU052) see exclusions 47.0)

<input type="radio"/>	EU067	Piko button, diameter 50 mm (red/black)	£421.00
<input type="radio"/>	EU068	Piko button, diameter 30 mm (red/black)	£421.00

Control panel holder (mandatory information)

<input type="radio"/>	EU070	Control panel holder standard (not possible in combination with TEN° (EU052)) see exclusions 50.1)	Inclusive
<input type="radio"/>	EU071	Control panel holder swing-away in parallel, 2 cm height-adjustable	£135.00
<input type="radio"/>	EU072	Control panel holder swing-away in parallel, 9,5 cm height-adjustable	£161.00

Control panel holder mounting side (mandatory information)

<input type="radio"/>	Right
<input type="radio"/>	Left

Joystick top

<input type="radio"/>	EU080	Fork for tetraplegics, horizontal (adjustable for hand width 70 - 90 mm)	£135.00
<input type="radio"/>	EU081	Stick S80 (special joystick handle 80 mm)	£119.00
<input type="radio"/>	EU082	Soft ball, black cover	£202.00
<input type="radio"/>	EU083	Ball top, small (diameter 43 mm)	£136.00
<input type="radio"/>	EU084	Ball top, large (diameter 48 mm)	£125.00
<input type="radio"/>	EU085	Soft ball (diameter 30 mm, black, 4 pieces)	£244.00

Modules for TEN°/R-net LED-L Colour control devices see exclusions 53.0)

<input type="radio"/>	EU054	TEN° LCD module (when using 1-switch scan drive, programming by service required; please order button separately; adapter switch box not required)	£1914.00
-----------------------	-------	--	----------

Holder for TEN° LCD module see exclusions 54.0) 54.1)

<input type="radio"/>	EU073	Standard (installation across from control panel side; not possible in combination with ES012) see exclusions 42.1)	£98.00
<input type="radio"/>	EU074	With gooseneck (installation across from control panel side; not possible in combination with ES012) see exclusions 42.1)	£303.00
<input type="radio"/>	EU075	With gooseneck for tray (included)	£227.00

Actuator module for TEN°/R-net LED-L/R-net Colour control device see exclusions 53.0) 55.0) 55.1)

<input type="radio"/>	EU056	Actuator module (required for power seat functions on R-net LED-L, R-net colour and TEN°, when more than one power seat function is needed)	£496.00
-----------------------	-------	---	---------

Juvo B4 Power wheelchair.

Control device accessories

<input type="checkbox"/>	EU057	Attendant control	£833.00
--------------------------	-------	-------------------	---------

Attendant control installation side see exclusions 57.0) 57.1)

<input type="radio"/>	Right	see exclusions 57.2)	
<input type="radio"/>	Left		

Track stabiliser see exclusions 53.0) 59.0)

<input type="radio"/>	EF023	Power (gyro module) (not possible in combination with EU059, EU060, EU050 or EU051; depending on terrain, the specified driving distance range can be reduced when using the gyro) see exclusions 59.1) 59.2)	£511.00
-----------------------	-------	---	---------

Drive unit (mandatory information)

<input type="radio"/>	ET016	Performance (usable up to a gross weight of 320 kg)	Inclusive
<input type="radio"/>	ET011	High Performance (only possible in combination with EU052, EU058 or EU064) see exclusions 2.1) 53.0)	£660.00

Speed

<input type="radio"/>	ET012	6 km/h	Inclusive
<input type="radio"/>	ET013	7,2 km/h see exclusions 2.1) 61.1)	Inclusive
<input type="radio"/>	ET014	10 km/h see exclusions 2.1) 61.1) 61.2)	Inclusive

Drive unit option see exclusions 62.0) 62.1)

<input type="radio"/>	ET008	Individual type approval for speed > 6 km/h (required only for Germany)	£596.00
-----------------------	-------	---	---------

Drive unit warranty extension

<input type="radio"/>	EW002	From 24 month to 48 month (the Mobility Solutions GmbH terms and exclusions apply)	£95.00
-----------------------	-------	--	--------

Additional instructions for use (additional IFU for non-national language)

<input type="checkbox"/>	ES028	Qualified personnel	Inclusive
<input type="checkbox"/>	ES029	User	Inclusive

Juvo B4 Power wheelchair.



EC001 - EC004 Standard seat



EC005 VAS



EC020/ED034 Contour seat with flat contour



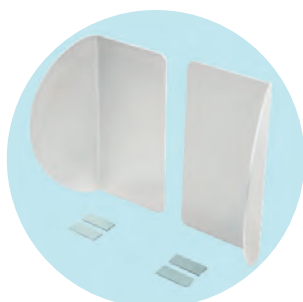
EC021/ED035 Contour seat with deep contour



ED050/051 Back support pad



ED036 Baxx aluminium flat top back support



ED039 Side panels



ED040 Lumbar support



EC025 Seat tilt 45°



EC026 Seat height adjustment 35 cm



ED047 power back support angle adjustment

Juvo B4 Power wheelchair.



EG013 Ribs



EG014 Lugs



EG015 Caster wheels with ribs



EL001 Gooseneck



EL002 Multi-axis, offset



EL003 Multi-axis, straight



EL031 UniLink head support holder, multi-axis



EL006/007 head support, small/large



EL013/014 Combination head/neck support small/large



EL015/016 head/neck support X-shape, small/large



EL033/034/035 Comfort Plus



EL036/037 Combo



EE024 Flip-up arm support



EP001 Standard lap belt



EP002 Lap belt with metal buckle

Juvo B4 Power wheelchair.



EP003 Lap belt with plastic buckle



EP020 Lap belt with rewin-der, metal buckle



EP005 - EP007 Dynamic harness



EP008 - EP010 Sternum harness



EP011 - EP013 Slimline ster-num harness



EP014 - EP016 Shoulder har-ness



EB011 Standard leg supports (basic design)



EB001 Standard leg supports (new design)



EB002 Mechanically elevating leg supports with length ad-justment



EB003 Power elevating leg support, separate control



EB004 Power elevating leg supports, simultaneous control



EB012 Individual foot plate, plastic



EB007 Individual foot plate, aluminium



EB017 Lock for single panel foot plate



EB022/023 Amputation leg support right/left

Juvo B4 Power wheelchair.



EU043 External magnetic charging receptacle



EA010 Splash guard for drive wheels



EU041 Battery charger 8 A, fanless



EU044 Battery charger 10 A, fanless (IP54)



EU046 Battery charger 10 A, with fan



EU042 Battery charger 12 A, incl. external charging receptacle



EF021 Curb climbing assist



ES013 Mounting kit for Dahl docking system



ES003 Pocket for mobile phone



ES004 Luggage carrier



ES005 Crutch holder



ES006 Rear-view mirror



ES010 Beverage holder



ES023 Hooks for backpack



ES305 Backpack with Otto-bock logo



ES306 Catheter bag, large

Juvo B4 Power wheelchair.



ET002 Receptacle for 12 V
ET003 Receptacle für 24 V
ET004 USB



ES021 Electr. lighting



EU050/059 VR2



EU051/060 VR2



EU052 TEN°



EU058 R-net LED-L



EU080 Fork for Tetraplegics,
horizontal



EU081 Stick S80



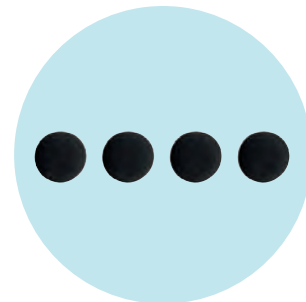
EU082 Soft ball, black cover



EU083 Ball top, small



EU084 Ball top, large



EU085 Soft ball



EU054 TEN° LCD module



EU057 Attendant control



EU125 P&G Wi-Fi Dongle



EU095 Hand warmer (single
hood for handmodule)

Juvo B4 Power wheelchair.

Seat cushion Livo												
SD [cm]	Seat width [cm]											
	34	36	38	40	42	44	46	48	50	52	54	56
34												
36												
38												
40												
42												
44												
46												
48												
50												
52												
54												
56												
58												



Juvo B4 Power wheelchair.

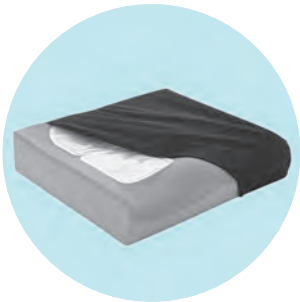
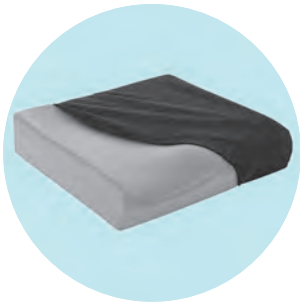
Seat cushion Evoflair												
SD [cm]	Seat width [cm]											
	34	36	38	40	42	44	46	48	50	52	54	56
34												
36												
38												
40												
42												
44												
46												
48												
50												
52												
54												
56												
58												



Juvo B4 Power wheelchair.

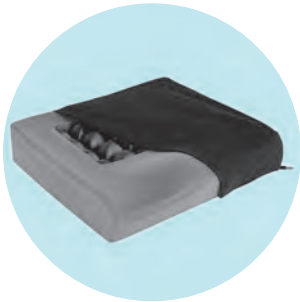
Seat cushion Terra, Terra Aquos

SD [cm]	Seat width [cm]													
	34	36	38	40	42	44	46	48	50	52	54	56		
34	○	○												
36	○	○												
38	○	○	○	○	○	○	○	○	○	○				
40	○	○	○	○	○	○	○	○	○	○				
42			○	○	○	○	○	○	○	○				
44			○	○	○	○	○	○	○	○				
46			○	○	○	○	○	○	○	○				
48			○	○	○	○	○	○	○	○				
50			○	○	○	○	○	○	○	○				
52			○	○	○	○	○	○	○	○				
54														
56														
58														



Juvo B4 Power wheelchair.

Seat cushion Terra Flair												
SD [cm]	Seat width [cm]											
	34	36	38	40	42	44	46	48	50	52	54	56
34												
36												
38	○	○	○	○	○	○	○	○	○	○		
40	○	○	○	○	○	○	○	○	○	○		
42			○	○	○	○	○	○	○	○		
44			○	○	○	○	○	○	○	○		
46			○	○	○	○	○	○	○	○		
48			○	○	○	○	○	○	○	○		
50			○	○	○	○	○	○	○	○		
52			○	○	○	○	○	○	○	○		
54												
56												
58												



Juvo B4 Power wheelchair.

Seat cushion Cloud												
SD [cm]	Seat width [cm]											
	34	36	38	40	42	44	46	48	50	52	54	56
34	○	○										
36	○	○	○	○								
38	○	○	○	○	○	○	○	○	○	○	○	
40	○	○	○	○	○	○	○	○	○	○	○	
42			○	○	○	○	○	○	○	○	○	○
44			○	○	○	○	○	○	○	○	○	○
46			○	○	○	○	○	○	○	○	○	○
48				○	○	○	○	○	○	○	○	○
50						○	○	○	○	○	○	○
52						○	○	○	○	○	○	
54												
56												
58												



Juvo B4 Power wheelchair.

Seat cushion with flat contour, deep contour

SD [cm]	Seat width [cm]								
	38	40	42	44	46	48	50	52	54
38	○	○							
40	○	○							
42	○	○	○	○	○	○	○	○	○
44	○	○	○	○	○	○	○	○	○
46	○	○	○	○	○	○	○	○	○
48			○	○	○	○	○	○	○
50			○	○	○	○	○	○	○
52			○	○	○	○	○	○	○
54			○	○	○	○	○	○	○
56			○	○	○	○	○	○	○
58									

○ : possible dimension in combination with VAS

Juvo B4 Power wheelchair.

Exclusions

- 2.1) Not possible in conjunction with product classification Category A (Indoor)
- 3.1) Possible only in combination with maximum user weight <= 140 kg
- 3.2) Possible only in combination with maximum user weight <= 75 kg
- 3.3) Possible only in combination with maximum user weight <= 125 kg
- 4.0) See table "seat depth" (490E75=1-Sitztiefe)
- 4.1) Not possible in conjunction with the combination of maximum user weight > 75 kg and standard seat, Junior or VAS
- 4.4) Possible only in combination with maximum load capacity <= 113 kg
- 5.0) See table "seat width" (490E75=1-Sitzbreite)
- 7.1) Possible only in combination with maximum load capacity <= 150 kg
- 7.2) See table "seat cushion Terra, Terra Aquos" (490E75=1-Terra_T-Aquos)
- 7.3) See table "seat cushion Terra-Flair" (490E75=1-Terra-Flair)
- 7.5) See table "seat cushion Cloud" (490E75=1-Cloud)
- 7.6) See table "seat cushion Livo" (490E75=1-Livo)
- 7.7) See table "seat cushion EvoFlair" (490E75=1-EvoFlair)
- 7.8) Cannot be combined with standard seat, Junior
- 7.9) Not possible in conjunction with the combination of VAS (Vario Adjust Seat), seat width 38 cm or 40 cm and seat depth > 46 cm, see table "seat cushion with flat contours, with deep contours" (490E75=0-konturiert)
- 7.10) Not possible in conjunction with the combination of VAS (Vario Adjust Seat), seat width > 40 cm and seat depth 38 cm or 40 cm, see table "seat cushion with flat contours, with deep contours" (490E75=0-konturiert)
- 7.11) Not possible in conjunction with the combination of VAS (Vario Adjust Seat) and seat depth 58 cm, see table "seat cushion with flat contours, with deep contours" (490E75=0-konturiert)
- 9.1) Possible only in combination with VAS
- 9.3) Cannot be combined with seat width 54 cm
- 11.1) Possible only in combination with back cushion with deep contours
- 12) Mandatory information in combination with Seat systems standard seat, small and SW 38 cm
- 12.1) Not possible in conjunction with seat systems standard seat, small and SW 38 cm and unselected Upholstery covers for arm supports
- 14.0) Possible only in combination with Baxx aluminium flat top back
- 14.1) Mandatory information in combination with Baxx aluminium flat top back
- 17.1) Cannot be combined with VAS
- 18.1) Possible only with seat inclination 0°
- 18.2) Cannot be combined with seat inclination -3° / 6° / 9°
- 20.1) Not possible in conjunction with caster wheel swing arm spring mounted
- 20.2) Not possible in conjunction with product classification Category B (Indoor/Outdoor) or product classification Category A (Indoor) (version HCD)
- 22.1) Not possible in conjunction with caster wheels 8" or drive wheels 12"
- 23.1) Possible only in conjunction with tyre colour grey
- 24.0) Seat height >= lower leg length +3 cm
- 24.1) Possible only in combination with product classification category A (Indoor)
- 24.2) Cannot be combined with seat tilt 45° or seat height adjustment 35 cm or seat height adjustment 35 cm with seat tilt 45°
- 24.3) Not possible in conjunction with seat systems VAS and caster wheel swing arm unsprung and caster wheels 9"
- 24.4) Not possible in combination with VAS and maximum user weight > 75 kg
- 24.5) Cannot be combined with seat tilt 20°
- 24.6) Possible only in combination with seat tilt 45° or seat height adjustment 35cm or seat height adjustment 35 cm with seat tilt 45°
- 24.7) Possible only in combination with caster wheel swing arm unsprung and caster wheels 9"
- 24.8) Possible only in combination with caster wheel swing arm spring mounted or caster wheels 10"
- 24.9) Not possible in conjunction with the combination of maximum user weight > 100 kg and VAS
- 24.10) Not possible in conjunction with the combination of seat height adjustment up to 35 cm with seat tilt 45° and VAS
- 24.11) Not possible in conjunction with the combination of VAS and SW > 42 cm and seat inclination 6°, 9° and caster wheel swing arm spring mounted or caster wheels 10"
- 24.12) Not possible in conjunction with the combination of VAS and caster wheel swing arm spring mounted or caster wheels 10"
- 24.13) Cannot be combined with caster wheels 10" or caster wheel swing arm spring mounted
- 24.14) Cannot be combined seat inclination -3°
- 24.15) Not possible in conjunction with the combination of seat inclination -3° and caster wheels 10" or caster wheel swing arm spring mounted
- 24.16) Not possible in conjunction with seat systems standard seat large / XL and seat tilt 20° and caster wheels 8"
- 24.17) Not possible in conjunction with seat systems standard seat large / XL and seat tilt 20° and caster wheel swing arm unsprung and Caster Wheels 9"
- 24.18) Not possible in conjunction with the combination of VAS and seat inclination 9° and caster wheel swing arm unsprung and caster wheels 9"
- 24.19) Not possible in conjunction with the combination of VAS and seat inclination 9° and caster wheel swing arm spring mounted or caster wheels 10"
- 24.20) Not possible in conjunction with seat systems VAS and seat inclination 9° and caster wheel swing arm unsprung and caster wheels 10" or caster wheel swing arm sprung and caster wheels 9"
- 24.21) Not possible in conjunction with seat systems VAS and caster wheels 8"
- 24.22) Not possible in conjunction with seat systems standard seat Junior / small / large / XL and seat inclination 6°, 9° and caster wheel swing arm unsprung and caster wheels 10" or caster wheel swing arm sprung and caster wheels 9"
- 24.23) Not possible in conjunction with seat systems standard seat Junior / small / large / XL and seat inclination 3°, 6°, 9° and caster wheel swing arm unsprung and caster wheels 9"
- 24.24) Not possible in conjunction with seat systems standard seat Junior / small / large / XL and seat inclination 9° and caster wheel swing arm unsprung and caster wheels 9"
- 24.25) Not possible in conjunction with the combination of caster wheels 10" or caster wheel swing arm spring mounted and seat tilt 20°
- 24.26) Not possible in conjunction with seat systems standard seat Junior / small / large / XL and seat inclination 9° and caster wheels 8"
- 24.27) Not possible in conjunction with seat systems standard seat large / XL and seat tilt 20° and caster wheel swing arm unsprung and Caster wheels 10" or caster wheel swing arm sprung and caster wheels 9"
- 24.28) Not possible in conjunction with the combination of caster wheel swing arm unsprung and caster wheels 9" and seat tilt 20°

Juvo B4 Power wheelchair.

- 24.29) Not possible in conjunction with the combination of VAS and SW > 42 cm and caster wheels 8"
- 24.31) Not possible in conjunction with the combination of VAS and seat inclination 9° and caster wheels 8"
- 24.32) Not possible in conjunction with seat systems standard seat large / XL
- 24.33) Not possible in conjunction with seat systems standard seat large / XL and caster wheel swing arm unsprung and caster wheels 9"
- 24.34) Not possible in combination with seat height adjustment up to 35 cm with seat tilt 45° and maximum user weight > 75 kg
- 24.35) Not possible in combination with seat tilt 20° and seat inclination 3° and caster wheel swing arm unsprung and caster wheels 9"
- 24.36) Not possible in combination with seat tilt 20° and seat inclination 3° and caster wheel swing arm unsprung and caster wheels 8"
- 24.37) See table "seat hight" (490E75=1-Sitzhoehe)
- 27.0) Possible only in combination with head/neck support mounting kit
- 27.1) Mandatory information in combination with head/neck support mounting kit
- 27.2) Possible only in combination with head/neck support mounting kit Goose Neck or Multi-axis, offset or Multi-axis, straight
- 28.0) Mandatory information in combination with category B
- 28.1) Not possible in conjunction with the combination of standard seat, small, seat depth < 42 cm and seat width > 38 cm
- 30.1) Possible only in combination with selected lower leg length
- 30.2) Not possible in conjunction with the combination of standard seat or VAS and lower leg length < 21 cm
- 31.1) Possible only in combination with selected lower leg length
- 31.2) Not possible in conjunction with the combination of standard seat or VAS and lower leg length < 21 cm
- 31.3) Not possible in conjunction with the combination of maximum user weight > 75 kg and standard seat and lower leg length < 28 cm
- 31.4) Not possible in conjunction with the combination of maximum user weight > 75 kg and VAS and lower leg length < 27 cm
- 31.5) Not possible in conjunction with selected lower leg length
- 31.7) Not possible in conjunction with the combination of seat depth 38 cm, belts lap belt with rewriter, metal buckle, accessories for VAS thigh lateral support, size M or thigh lateral support, size S and arm support, standard
- 31.8) Not possible in conjunction with the combination of seat depth < 44 cm, belts lap belt, standard, lap belt, padded, metal buckle or lap belt, padded, plastic buckle, accessories for VAS thigh lateral support, size M or thigh lateral support, size S and arm support, flip-up
- 31.6) Not possible in conjunction with the combination of seat height (SH) < 45 cm and lower leg length (LL) <= 30 cm
- 32.0) Cannot be combined with leg support version, without leg support
- 32.1) Mandatory information in combination with leg support version, standard, mechanically elevating or electrically elevating
- 32.2) Not possible in conjunction with the combination of standard seat and lower leg length < 25 cm
- 32.3) Not possible in conjunction with the combination of VAS and lower leg length < 24 cm
- 32.4) Cannot be combined with leg support version, mechanically elevating or electrically elevating
- 32.6) Cannot be combined with leg support version standard (Basic design)
- 32.7) Not possible in conjunction with the combination of standard seat or VAS and lower leg length < 17 cm and leg support version, standard
- 32.8) Not possible in conjunction with the combination of maximum user weight > 75 kg and standard seat or VAS and lower leg length < 24 cm and leg support version, standard
- 32.9) Cannot be combined with leg support version, mechanically elevating or electrically elevating, separate controllable
- 32.10) Not possible in conjunction with the combination of maximum user weight > 140 kg and leg support version, electrically elevating, simultaneously controllable
- 33.1) Possible only in combination with leg support version, mechanically or electrically elevating
- 33.2) Possible only in combination with Foot plate version Single-panel, aluminium foot plate
- 33.3) Not possible in conjunction with the combination of Leg support version Standard (New Design) and Lower leg length < 24 cm
- 33.4) Not possible in conjunction with the combination of Leg support version Electrically elevating, simult. controllable and Lower leg length < 28 cm
- 33.5) Possible only in combination with Leg support version Standard (Basic design)
- 35.2) Not possible in conjunction with the combination of Argentina, Australia, Brazil, Hong Kong, Japan, Canada, Columbia, Mexico, Thailand, United Kingdom or United States of America as the country of destination
- 35.3) Cannot be combined with AGM 63 Ah (C5) or Gel 63 Ah (C5) batteries
- 35.4) Not possible in conjunction with the combination of Argentina, Brazil, Canada, Columbia, Mexico or United States of America as the country of destination
- 36.1) Possible only in conjunction with battery charger, without
- 39.5) Not possible in conjunction with the combination of SH 40 cm and caster wheel swing arm unsprung and caster wheels 9" and VAS or standard seat large / XL
- 39.6) Not possible in conjunction with the combination of SH 42,5 cm and caster wheel swing arm Spring mounted or caster wheels 10" and VAS or standard seat large / XL
- 41.2) Cannot be combined with chassis safety accessories curb climbing assist
- 41.3) Not possible in conjunction with the combination of Electric seat adjustment Seat tilt 20° Electrical, Belts 2-point Lap belt with rewriter, metal buckle and SD <44 cm
- 42.1) Cannot be combined with therapy tray
- 42.2) Cannot be combined with rearview mirror
- 42.3) Cannot be combined with Germany as the country of destination
- 42.4) Not possible in conjunction with Australia as the country of destination
- 43.1) Cannot be combined with socket for external power supply, right 24 V and socket for external power supply, right USB
- 43.2) Cannot be combined with socket for external power supply, right 12 V and socket for external power supply, right USB
- 43.3) Cannot be combined with socket for external power supply, right 12 V and socket for external power supply, right 24 V
- 43.4) Cannot be combined with batteries/battery capacity AGM 63 Ah (C5) / 75 Ah (C20)
- 44.0) Mandatory information in conjunction with the combination of product classification category B and all countries of destination except Other countries, Argentina, Australia, Brazil, France, Hong Kong, Japan, Canada, Columbia, Korea, Mexico, Russia, Switzerland, Thailand, Turkey, United States of America or United Kingdom
- 44.1) Not possible in conjunction with the combination of Germany as the country of destination and product classification category B
- 45.1) Theoretical total weight (without special requests) = sum of the selected characteristic value weights
- 46.1) Cannot be combined with electric functions
- 46.2) Possible only in combination with total weight <= 260 kg
- 46.3) Possible only in combination with max. 3 electric functions
- 46.4) Cannot be combined with lighting acc. to German StVZO
- 46.5) Not possible in conjunction with the combination of country of destination Germany and more than 2 electric functions
- 46.8) Not possible in conjunction with the combination of electric seat adjustment seat height adjustment up to 35 cm, back angle adjust-

Juvo B4 Power wheelchair.

- ment, electric and and leg support version, electrically elevating, simultaneously controllable
- 47.0) Possible only in combination with control unit, TEN°
 - 47.1) Mandatory information in combination with control unit, TEN°
 - 48.0) Possible only in combination with control panel, TEN°, colour selectable
 - 48.1) Mandatory information in combination with control panel, TEN°, colour selectable
 - 50.1) Cannot be combined with control unit TEN°
 - 53.0) Possible only in combination with control unit, TEN° or R-net LED-L (90 A) or R-net Colour (90 A)
 - 54.0) Possible only in combination with TEN° LCD module
 - 54.1) Mandatory information in combination with TEN° LCD module
 - 55.0) Mandatory information in conjunction with the combination of control unit, TEN° (90A) or R-net LED-L (90 A) or R-net Colour (90 A) and > 1 electric function
 - 55.1) Mandatory information in conjunction with the combination of lighting acc. to German StVZO and control unit, TEN° or R-net LED-L (90 A)
 - 57.0) Possible only in combination with attendant control
 - 57.1) Mandatory information in combination with attendant control
 - 57.2) Not possible in conjunction with the combination of standard seat, Junior and actuator module for control unit, TEN°
 - 58.1) Possible only in combination with control unit, VR2
 - 59.0) Not possible in conjunction with Australia, Canada or the United States of America as the country of destination
 - 59.1) Not possible in conjunction with the combination of batteries Gel 63 Ah (C5) / 74 Ah (C20) and General accessories external horn
 - 59.2) Not possible in conjunction with the combination of batteries AGM 63 Ah (C5) / 75 Ah (C20) and general accessories external horn
 - 61.1) For Germany as the country of destination, this is possible only in conjunction with the combination of rear warning sign and lighting acc. to German StVZO
 - 61.2) Not possible in conjunction with drive unit high performance
 - 62.0) Possible only in conjunction with the combination of Germany as the country of destination and speed > 6 km/h
 - 62.1) Mandatory information in conjunction with the combination of Germany as the country of destination and speed > 6 km/h
 - 63.0) Not possible in conjunction with Australia as the country of destination
 - 64.0) Possible only in combination with additional instructions for use, qualified personnel
 - 64.1) Mandatory information in combination with additional instructions for use, qualified personnel
 - 65.0) Possible only in combination with additional instructions for use, user
 - 65.1) Mandatory information in combination with additional instructions for use, user
 - 67.1) Not possible in conjunction with the combination of standard seat, small and seat width 38 cm or 40 cm
 - 67.2) Not possible in conjunction with the combination of standard seat, large and seat width 44 cm or 46 cm
 - 67.3) Not possible in conjunction with the combination of standard seat, XL and seat width 50 cm or 52 cm
 - 67.4) Not possible in conjunction with 2-point Lap belt with rewinder, metal buckle
 - 68.1) Possible only in combination with electric seat adjustment seat height adjustment up to 35 cm or seat height adjustment up to 35 cm with seat tilt 45°
 - 69.0) Possible only in combination with head/neck support mounting kit UniLink, multi-axis