

## Power wheelchair Juvo B6.

Quotation

Order

### Billing Address

PO no.

Cust Name

Street no.

PC, County

### Shipping address (if different from billing address)

Cust Name

Street no.

PC, County

Name \_\_\_\_\_ Date \_\_\_\_\_ Signature \_\_\_\_\_



**Rear-wheel drive**

figure shows add charge options



**Mid-wheel drive**

figure shows add charge options



**Front-wheel drive**

figure shows add charge options

### Article number:

**EA004 - FWD - 490E75=0\_AS03\_C**  
**EA005 - RWD - 490E75=0\_AS03\_C**  
**EA006 - MWD - 490E75=0\_AS06\_C**

**max. load capacity: 160 kg** (standard equipment)

### Base Price

FWD - £7437.00  
 RWD - £6948.00  
 MWD - £8499.00

Please email all orders to  
[Ottobockmobility@ottobock.com](mailto:Ottobockmobility@ottobock.com)

Valid from 01.01.2025 to 31.12.25  
 Please ensure you are using the latest order form

By placing the order, you agree to comply with the instructions for use/service manuals for accessories and products of other manufacturers when combining them with an Ottobock product, in addition to the instructions for use/service manuals of the respective Ottobock products. Also you confirm to have read, understood and accepted, our general terms and conditions. In addition, you agree, upon placing an order, to conduct your own conformity assessment or approval in accordance with national requirements if and when you implement modifications or attachments that do not meet the specifications of Ottobock instructions for use/service manuals. Wheelchairs with CLT package cannot be returned or exchanged

The number codes contained in this order form are not intended to be used as article numbers for spare parts orders.  
 Please scan the QR code to access the spare parts catalogue for any spare parts orders.

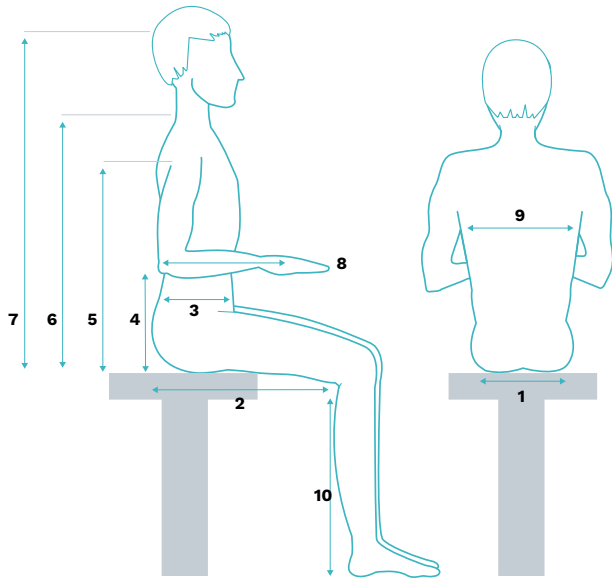


## Power wheelchair *Juvo B6*.

### Basic data (voluntary information)

**Gender**  male  female  divers

**Indication**



### Mandatory information\*

User height [cm]	<input type="text"/>
User weight [kg]	<input type="text"/>
1 Seat width [cm]	<input type="text"/>
2 Seat depth [cm]	<input type="text"/>
3 Trunk depth [cm]	<input type="text"/>
4 Arm support height [cm]	<input type="text"/>
5 Armpit height [cm]	<input type="text"/>
6 Shoulder height [cm]	<input type="text"/>
7 Head height [cm]	<input type="text"/>
8 Forearm length to middle of palm	<input type="text"/>
9 Trunk width [cm]	<input type="text"/>
10 Lower leg length [cm]	<input type="text"/>

\* This information will help to support user-oriented settings and product development. Ottobock guarantees the confidential and purely internal use of these data.

### Product classification

<input type="radio"/> EA002	<b>Category B</b> (In-/Outdoor) (electric lighting mandatory in Europe)	Inclusive
-----------------------------	---	-----------

### Drive type

<input type="radio"/> EA004	<b>Front-wheel drive</b> (FWD)	£7437.00
<input type="radio"/> EA005	<b>Rear-wheel drive</b> (RWD)	£6948.00
<input type="radio"/> EA006	<b>Mid-wheel drive</b> (MWD) see exclusions 2.1)	£8499.00

### Max. user weight (user + personal luggage, information required for chassis suspension)

<input type="radio"/>	<b>70 kg</b>	Inclusive
<input type="radio"/>	<b>75 - 100 kg</b>	Inclusive
<input type="radio"/>	<b>100 - 140 kg</b>	Inclusive
<input type="radio"/>	<b>140 - 160 kg</b>	Inclusive

### Chassis size

<input type="radio"/> EA008	<b>Size 2</b> (overall width approx. 64 cm; max.user weight 160 kg/200 kg)	Inclusive
-----------------------------	--	-----------

## Power wheelchair *Juvo B6*.

### Seating systems

<input type="radio"/>	EC001	<b>Standard seat Junior</b> (max. user weight 75 kg) (SW 34...40 cm, SD 34...40 cm, BH 47 cm bis 37 cm, adjustable in 5 cm increments) see exclusions 5.2)	£152.00
<input type="radio"/>	EC002	<b>Standard seat small</b> (SW 38...42 cm, SD 38...46 cm, BH 55 cm bis 45 cm, adjustable in 5 cm increments) see exclusions 4.1)	Inclusive
<input type="radio"/>	EC003	<b>Standard seat large</b> (SW 44...48 cm, SD 42...50 cm, BH 55 cm bis 45 cm, adjustable in 5 cm increments) see exclusions 5.1)	Inclusive
<input type="radio"/>	EC004	<b>Standard seat XL</b> (SW 50...56 cm, SD 42...50 cm, BH 55 cm bis 45 cm, adjustable in 5 cm increments) see exclusions 5.1)	£195.00
<input type="radio"/>	EC005	<b>VAS</b> (Vario Adjust Seat) (SW 38...54 cm, SD 38...58 cm, BH 55 cm, 53 cm, 51 cm, 45 cm)	£449.00

### Back support for modular Recaro seating system see exclusions 6.0) and 6.1)

<input type="radio"/>	ED030	<b>LX</b> (manually adjustable)	£1536.00
<input type="radio"/>	ED031	<b>LT</b> (adaptable lateral supports, manually adjustable)	£1595.00

### Seat bottom for modular Recaro back support system see exclusions 6.0) and 6.1)

<input type="radio"/>	EC008	<b>F</b> (flat padded, seat bottom sewn to lateral guides, cushion thickness approx. 14 cm)	£988.00
<input type="radio"/>	EC009	<b>X</b> (contoured lateral guides with seat extension, cushion thickness approx. 16.5 cm)	£1161.00
<input type="radio"/>	EC010	<b>W</b> (flat padded, with seat extension, cushion thickness approx. 14.5 cm)	£995.00

\* All Recaro seats are equipped with a head support.

### Settings for standard seat Junior see exclusions 8.0) to 8.12) and 9.0) to 9.2)

Seat width SD in cm	<input type="radio"/> 34	<input type="radio"/> 36	<input type="radio"/> 38	<input type="radio"/> 40
Seat depth SD in cm	<input type="radio"/> 34	<input type="radio"/> 36	<input type="radio"/> 38	<input type="radio"/> 40
Back support height BH 47 cm (adjustable to 42 cm or 37 cm)				

### Settings for standard seat small see exclusions 8.0) to 8.12) and 9.0) to 9.2)

Seat width SD in cm	<input type="radio"/> 38	<input type="radio"/> 40	<input type="radio"/> 42		
Seat depth SD in cm	<input type="radio"/> 38	<input type="radio"/> 40	<input type="radio"/> 42	<input type="radio"/> 44	<input type="radio"/> 46
Back support height BH 55 cm (adjustable to 50 cm or 45 cm)					

### Settings for standard seat large see exclusions 8.0) to 8.16) and 9.0) to 9.2)

Seat width SD in cm	<input type="radio"/> 44	<input type="radio"/> 46	<input type="radio"/> 48		
Seat depth SD in cm	<input type="radio"/> 42	<input type="radio"/> 44	<input type="radio"/> 46	<input type="radio"/> 48	<input type="radio"/> 50
Back support height BH 55 cm (adjustable to 50 cm or 45 cm)					

### Settings for standard seat XL see exclusions 8.0) to 8.16) and 9.0) to 9.2)

Seat width SD in cm	<input type="radio"/> 50	<input type="radio"/> 52	<input type="radio"/> 54	<input type="radio"/> 56	
Seat depth SD in cm	<input type="radio"/> 42	<input type="radio"/> 44	<input type="radio"/> 46	<input type="radio"/> 48	<input type="radio"/> 50
Back support height BH 55 cm (adjustable to 50 cm or 45 cm)					

### Settings for VAS see exclusions 8.0) to 8.2) and 9.0) to 9.2)

Seat width SD in cm	<input type="radio"/> 38	<input type="radio"/> 40	<input type="radio"/> 42	<input type="radio"/> 44	<input type="radio"/> 46	<input type="radio"/> 48	<input type="radio"/> 50	<input type="radio"/> 52	<input type="radio"/> 54
Seat depth SD in cm	<input type="radio"/> 38	<input type="radio"/> 40	<input type="radio"/> 42	<input type="radio"/> 44	<input type="radio"/> 46	<input type="radio"/> 48	<input type="radio"/> 50	<input type="radio"/> 52	<input type="radio"/> 54
	<input type="radio"/> 56	<input type="radio"/> 58							
Back support height BH 55 cm (adjustable to 53 cm, 51 cm or 45 cm)									

## Power wheelchair *Juvo B6*.

### Overview about seating systems, seat width and seat depth

#### Seat width

Seat	Seat width SW [cm]												
	34	36	38	40	42	44	46	48	50	52	54	56	
Standard seat Junior	○	○	○	○									
Standard seat small			○	○	○								
Standard seat large						○	○	○					
Standard seat XL									○	○	○	○	
VAS			○	○	○	○	○	○	○	○	○		

#### Seat depth

Seat	Seat depth SD [cm]												
	34	36	38	40	42	44	46	48	50	52	54	56	58
Standard seat Junior	○	○	○	○									
Standard seat small			○	○	○	○	○						
Standard seat large					○	○	○	○	○				
Standard seat XL					○	○	○	○	○				
VAS			○	○	○	○	○	○	○	○	○	○	○
Recaro n-Joy Plus			○	○	○	○	○	○	○	○	○	○	

○ Lower leg length LLL   cm (15 ... 54 cm) (without seat cushion; > 50 cm not possible in combination with Recaro)  
see exclusions 5.1) 8.12) 10.1) 10.2) 19.1) 19.3)

**Seat cushion** (only possible in combination with standard seat or VAS, mandatory information) see exclusions 9.0) 9.1)

○ EC011	<b>Without seat cushion</b>	Inclusive
○ EC012	<b>Seat cushion, sblack cover</b> (seat cushion thickness 5 cm)	Inclusive
○ EC013	<b>Seat cushion with incontinence cover</b> (seat cushion thickness 5 cm)	£103.00
○ EC035	<b>Evoflair</b> (max. user weight 200 kg; seat cushion thickness 8 cm) see exclusions 11.7)	£303.00
○ EC014	<b>Terra</b> (up to 150 kg; seat cushion thickness 6 cm) see exclusions 11.1) 11.2)	£207.00
○ EC015	<b>Terra Aquos</b> (up to 150 kg; seat cushion thickness 6 cm) see exclusions 11.1) 11.2)	£233.00
○ EC016	<b>Terra Flair</b> (up to 150 kg; seat cushion thickness 6 cm) see exclusions 11.1) 11.3)	£466.00
○ EC018	<b>Cloud</b> (seat cushion thickness 11 cm) see exclusions 11.5)	£571.00
○ EC020	<b>Contour, flat contoured</b> (seat cushion thickness 7 cm) see exclusions 11.8) 11.10) bis 11.12)	£252.00
○ EC021	<b>Contour, deep contoured</b> (seat cushion thickness 9 cm) see exclusions 11.8) 11.10) bis 11.12)	£252.00

Please refer to our seat cushion brochure for information on additional seat cushions.

## Power wheelchair *Juvo B6*.

**Cover for seat cushion contoured** (possible only in combination with seat cushion flat or deep contoured, mandatory information) see exclusions 12.0) 12.1)

<input type="radio"/>	EC022	<b>Fabric cover</b>	Inclusive
<input type="radio"/>	EC023	<b>Synthetic lether cover</b>	£308.00
<input type="radio"/>	EC024	<b>Fabric cover with incontinence barrier</b>	£335.00

**Back support version/with contour** (possible only in combination with standard seat or VAS, mandatory information) see exclusions 9.1)

<input type="radio"/>	ED032	<b>Without back support upholstery</b> see exclusions 9.0)	Inclusive
<input type="radio"/>	ED033	<b>Back support upholstery, adaptable</b> see exclusions 9.0)	Inclusive
<input type="radio"/>	ED034	<b>Back support pad flat contoured</b> (seat depth reduction by approx. 2 cm) see exclusions 9.0) 11.8)	£359.00
<input type="radio"/>	ED035	<b>Back support pad deep contoured</b> (seat depth reduction by approx. 2 cm) see exclusions 9.0) 11.8)	£359.00
<input type="radio"/>	ED050	<b>Back support pad flat contoured AD</b> (adaptable, seat depth reduction by approx. 2 cm) see exclusions 13.2)	£420.00
<input type="radio"/>	ED051	<b>Back support pad deep contoured AD</b> (adaptable, seat depth reduction by approx. 2 cm) see exclusions 13.2)	£420.00
<input type="radio"/>	ED036	<b>Baxx aluminium flat top back support</b> (max. user weight 113 kg, installation accessories 4-point-PRO, SD reduction by approx. 2 cm, back support width = chosen seat width) see exclusions 13.1) 13.2) 13.3)	£694.00

**Cover for back support pad, contoured** (possible only in combination with flat or deep contoured back support pad, mandatory information) see exclusions 14.0) 14.1)

<input type="radio"/>	ED037	<b>Fabric cover</b>	Inclusive
<input type="radio"/>	ED038	<b>Synthetic lether cover</b>	£51.00

**Accessories for back support pad, contoured** (possible only in combination with flat or deep contoured back support pad, mandatory information) see exclusions 14.0) 14.1)

<input type="radio"/>	ED039	<b>Side panels</b> (possible only in combination with deep contoured back support pad) see exclusions 15.1)	£95.00
<input type="radio"/>	ED040	<b>Lumbar support</b>	£72.00

**Back support height for Baxx** (possible only in combination with Baxx aluminium flat top back support; mandatory information) see exclusions 16.0) 16.1)

<input type="radio"/>	ED041	<b>High</b> (18"/46 cm)	Inclusive
<input type="radio"/>	ED042	<b>Extra high</b> (20"/51 cm)	Inclusive

**Back support contour for Baxx** (possible only in combination with Baxx aluminium flat top back support; mandatory information) see exclusions 16.0) 16.1)

<input type="radio"/>	ED043	<b>Active</b> (2,5"/6 cm)	Inclusive
<input type="radio"/>	ED044	<b>Deep</b> (4"/10 cm)	£29.00
<input type="radio"/>	ED045	<b>Extra deep</b> (6"/15 cm)	£56.00

**Colour for Baxx** (possible only in combination with Baxx aluminium flat top back support; mandatory information) see exclusions 16.0) 16.1)

<input type="radio"/>	ED002	Anthrazit metallic	Inclusive	<input type="radio"/>	ED016	Silver metallic	Inclusive
<input type="radio"/>	ED003	Jet black RAL 9005	Inclusive	<input type="radio"/>	ED017	Yellow RAL 1023	Inclusive
<input type="radio"/>	ED004	Ice blue	Inclusive	<input type="radio"/>	ED018	Signal red RAL 3001	Inclusive
<input type="radio"/>	ED005	Sparkle light orange	Inclusive	<input type="radio"/>	ED021	Sparkle granny-smith	Inclusive
<input type="radio"/>	ED009	Vinho Sparkle	Inclusive	<input type="radio"/>	ED022	Creame RAL 9001	Inclusive
<input type="radio"/>	ED012	Sky blue	Inclusive	<input type="radio"/>	ED023	White RAL 9016	Inclusive
<input type="radio"/>	ED013	Jet black RAL 9005 matte	Inclusive	<input type="radio"/>	ED027	Shimano matt	Inclusive
<input type="radio"/>	ED014	Candy red	Inclusive	<input type="radio"/>	ED029	Pink RAL 4010	Inclusive

## Power wheelchair *Juvo B6*.

### Seat inclination (pre-tilt)

<input type="radio"/>	-3° (not possible in combination with Recaro n-Joy, n-Joy-Plus, modular seating system; front-wheel drive; mid-wheel drive; combination of rear-wheel drive and VAS) see exclusions 10.1) 19.1) 19.2) 19.3)
<input type="radio"/>	0°
<input type="radio"/>	3° (not possible in combination with Recaro n-Joy, n-Joy-Plus or modular seating system) see exclusions 10.1)
<input type="radio"/>	6° (not possible in combination with Recaro n-Joy, n-Joy-Plus or modular seating system) see exclusions 5.1) 10.1)
<input type="radio"/>	9° (not possible in combination with Recaro n-Joy, n-Joy-Plus or modular seating system) see exclusions 5.1) 10.1)

### Seat height (at 0° seat tilt, without seat cushion, suspension fully extended/without user) SH >= LLL + 3 cm Recaro seat/system: additional approx. 13 cm for padding, recommended max. SH 49 cm

FWD, RWD, MWD Size 1 & 2	cm	41	43	45	47	49	51	53	55	57
	Inch	16,5	17,5	18	18,5	19,5	20,5	21	22	23
Notices and exclusions		21.0) bis 21.6) 21.9) 21.10)	21.0) 21.5) bis 21.7) 21.9) 21.10) 21.14) bis 21.17)	21.0) 21.5) 21.6) 21.15) bis 21.17)	21.0) 21.15) 21.17)	8.12) 21.0) 21.6) 21.15)	8.12) 10.2) 21.0) 21.6)	5.1) 19.1) 21.0) 21.6) 21.12)	5.1) 19.1) 21.0) 21.6) 21.11) bis 21.13)	10.1) 19.1) 19.3) 21.0) 21.6) 21.8) 21.12) 21.13)
Standard seat		○	○	○	○	○	○	○	○	○
Vario Adjust Seat (VAS)		○	○	○	○	○	○	○	○	○
Recaro (n-Joy, n-Joy Plus and seat modules) + ca. 13 - 16 cm seat cushion thickness		○	○	○	○	○	○	○	○	○
Standard seat; tilt 45°		○	○	○	○	○	○	○	○	○
Vario Adjust Seat (VAS); tilt 45°		○	○	○	○	○	○	○	○	○
Recaro (all); tilt 45°		○	○	○	○	○	○	○	○	○
Standard seat; tilt 45° & seat height adjustment		○	○	○	○	○	○	○	○	○
Vario Adjust Seat (VAS); tilt 45° & seat height adjustment		○	○	○	○	○	○	○	○	○
Recaro (all); tilt 45° & seat height adjustment		○	○	○	○	○	○	○	○	○

Seat height measured without load from floor to top of seat plate/seat frame (for Recaro), at 0° pre-tilt, without seat height adjustment and without seat cushion. Under load the specified seat height will be min. 1 cm.

## Power wheelchair *Juvo B6*.

<b>Power seat adjustment</b> (only possible in combination with seat inclination 0°)			
<input type="radio"/>	EC025	<b>Power seat tilt 45° with centre of gravity shifting</b> see exclusions 20.0) 20.11) to 20.13) 20.24) 20.29) 20.30)	£860.00
<input type="radio"/>	EC026	<b>Power seat height adjustment 35 cm</b> see exclusions 20.0) 20.10) to 20.14) 20.25) 20.29) 20.30) 42.3)	£2374.00
<input type="radio"/>	EC027	<b>Power seat height adjustment 35 cm with 45° seat tilt, with centre of gravity shifting</b> see exclusions 20.0) 20.10) to 20.14) 20.25) 20.29) 20.30) 42.3)	£2774.00
<input type="radio"/>	EC033	<b>Without</b> see exclusions 20.15) to 20.23) 20.26) to 20.28) 20.31) 20.32)	Inclusive
<b>Power seat adjustment accessories</b>			
<input type="checkbox"/>	ES307	<b>Stabilisation for power seat height adjustment</b> see exclusions 85.1)	£78.00
<b>Back support angle adjustment</b> (mandatory information in combination with standard seat or VAS) see exclusions 9.1)			
<input type="radio"/>	ED046	<b>Mechanical in increments</b> (standard seat: 0/10/20/30° or -9/1/11/21°; VAS: -5/0/10/20/30°9; possible only in combination with standard seat or VAS) see exclusions 9.0)	Inclusive
<input type="radio"/>	ED047	<b>Power</b> (Standard seat 30°; VAS -5° to 30°) see exclusions 22.1)	£733.00
<b>Mounting kit for head/neck supports</b> (not possible in combination with Recaro seat and seating system) see exclusions 10.1)			
<input type="radio"/>	EL001	<b>Gooseneck</b>	£136.00
<input type="radio"/>	EL002	<b>Multi-axis, offset</b>	£126.00
<input type="radio"/>	EL003	<b>Multi-axis, straight</b>	£185.00
<input type="radio"/>	EL031	<b>UniLink holder for head support, multi-axis</b> (suitable only for Advanced line head supports; not possible in combination with EL006, EL007, EL013 bis EL016)	£251.00
<b>UniLink accessories</b> (may be used to compensate the distance at kyphotic head posture) see exclusions 83.0)			
<input type="radio"/>	EL039	<b>UniLink extension, 38 mm</b>	£87.00
<input type="radio"/>	EL038	<b>UniLink extension, 50 mm</b>	£64.00
<input type="radio"/>	EL040	<b>UniLink extension, 75 mm</b>	£87.00
<b>Head/neck supports</b> (possible only in comb. with mounting kit for head/neck supports, mandatory information)) see exclusions 24.0) 24.1)			
<b>Care line</b>			
<input type="radio"/>	EL006	<b>Head support, small (PU)</b> see exclusions 24.2)	£95.00
<input type="radio"/>	EL007	<b>Head support, large (PU)</b> see exclusions 24.2)	£95.00
<input type="radio"/>	EL013	<b>Head/neck support, small (PU)</b> see exclusions 24.2)	£90.00
<input type="radio"/>	EL014	<b>Head/neck support, large (PU)</b> see exclusions 24.2)	£90.00
<input type="radio"/>	EL015	<b>Head/neck support, X-shape, small (PU)</b> see exclusions 24.2)	£109.00
<input type="radio"/>	EL016	<b>Head/neck support, X-shape, large (PU)</b> see exclusions 24.2)	£109.00
<b>Advanced line</b>			
<input type="radio"/>	EL033	<b>Comfort Plus, size S</b>	£168.00
<input type="radio"/>	EL034	<b>Comfort Plus, size M</b>	£194.00
<input type="radio"/>	EL035	<b>Comfort Plus, size L</b>	£194.00
<input type="radio"/>	EL036	<b>Combo (3-pad), size S</b>	£333.00
<input type="radio"/>	EL037	<b>Combo (3-pad), size L</b>	£347.00

## Power wheelchair *Juvo B6*.

<b>Belts</b> (mandatory information in combination with category B) see exclusions 25.0)			
<input type="radio"/>	EP001	<b>Standard lap belt</b>	Inclusive
<input type="radio"/>	EP002	<b>2-point lap belt, padded, metal buckle</b> (not possible in combination with Recaro seat and seating system) see exclusions 10.1)	£161.00
<input type="radio"/>	EP003	<b>2-point lap belt, padded, plastic buckle</b> (not possible in combination with Recaro seat and seating system) see exclusions 10.1)	£146.00
<input type="radio"/>	EP020	<b>2-point lap belt with metal buckle and rewinder</b> (buckle on side of joystick) see exclusions 10.1) 11.8) 25.2)	£244.00
<b>Chest/shoulder harnesses</b> (not possible in combination with Recaro) see exclusions 10.1)			
<input type="radio"/>	EP005	<b>Dynamic harness, size S</b>	£207.00
<input type="radio"/>	EP006	<b>Dynamic harness, size M</b>	£207.00
<input type="radio"/>	EP007	<b>Dynamic harness, size L</b>	£207.00
<input type="radio"/>	EP008	<b>Sternum harness, size S</b>	£198.00
<input type="radio"/>	EP009	<b>Sternum harness, size M</b>	£198.00
<input type="radio"/>	EP010	<b>Sternum harness, size L</b>	£198.00
<input type="radio"/>	EP011	<b>Slimline sternum harness, size S</b>	£192.00
<input type="radio"/>	EP012	<b>Slimline sternum harness, size M</b>	£192.00
<input type="radio"/>	EP013	<b>Slimline sternum harness, size L</b>	£192.00
<input type="radio"/>	EP014	<b>Shoulder harness, size S</b>	£213.00
<input type="radio"/>	EP015	<b>Shoulder harness, size M</b>	£213.00
<input type="radio"/>	EP016	<b>Shoulder harness, size L</b>	£213.00
<b>VAS accessories</b> (possible only in combination with VAS)			
<input type="radio"/>	ED048	<b>Push handles</b>	£72.00
<b>Arm supports</b>			
<input type="radio"/>	EE023	<b>Standard</b>	Inclusive
<input type="radio"/>	EE024	<b>Flip-up</b> (effective seat width (+/- 1 cm per side) on standard seat small, SW 42 cm; standard seat large, SW 48 cm; standard seat XL, SW 56 cm; VAS plus 2 cm) (max. user weight 125 kg; not in combination with standard seat junior and Recaro) see exclusions 10.1) 11.6) 11.8) 79.1) bis 79.3)	£271.00
Padding for arm support and clothing guard can be ordered from the spare parts catalogue.			
<b>Leg support version</b>			
<input type="radio"/>	EB001	<b>Standard</b> (LLL is required) see exclusions 20.29) 28.1)	Inclusive
<input type="radio"/>	EB002	<b>Mechanically elevating with length adjustment</b> (with length adjustment, not available for LLL < 21 cm; LLL is required) see exclusions 4.1) 28.1) to 28.5) 28.45)	£638.00
<input type="radio"/>	EB003	<b>Power elevating with length adjustment and separate control</b> (not available for LLL < 21 cm; LLL is required) see exclusions 4.1) 28.1) to 28.7)	£1299.00
<input type="radio"/>	EB004	<b>Power elevating with length adjustment and simultaneous control</b> (not available for LLL < 21 cm; LLL is required) see exclusions 28.1) to 28.7)	£1299.00
<input type="radio"/>	EB013	<b>Centrally mounted leg support</b> (LLL is required) exclusions see tables from page 24; see exclusions 28.1) 28.9) to 28.44) 28.46) to 28.48)	£923.00
<input type="radio"/>	EB005	<b>Without leg support</b> (not possible in combination with selected lower leg length) see exclusions 28.8)	Inclusive
<b>Foot plate version</b> see exclusions 29.0) 29.1)			
<input type="radio"/>	EB006	<b>Individual, plastic foot plate</b> (standard equipment by EB001, max. user weight 140 kg; not available on elevating leg supports) see exclusions 4.1) 29.2) bis 29.4) 29.6)	Inclusive
<input type="radio"/>	EB007	<b>Individual, aluminium foot plate</b> see exclusions 5.1) 29.11)	£271.00
<input type="radio"/>	EB009	<b>Single-panel, aluminium foot plate</b> see exclusions 29.10)	£202.00



## Power wheelchair *Juvo B6*.

<b>Leg support accessories</b>		
<input type="radio"/>	EB010	<b>Lateral leg pad for power and mechanical elevating leg supports</b> (pair) (possible only in combination with mechanically or power elevating leg support adjustment) see exclusions 30.1) £235.00
<input type="radio"/>	EB017	<b>Lock for single panel aluminium foot plate</b> (only possible in combination with EB009) see exclusions 30.2) 30.3) 30.4) £85.00
<b>Batteries</b>		
<input type="radio"/>	EU032	<b>Gel 63 Ah (C5) / 74 Ah (C20)</b> (possible only in combination with chassis size 2 see exclusions 31.1) £651.00
<input type="radio"/>	EU500	<b>Gel 62 Ah (C5) / 79,6 Ah (C20) Basic</b> (possible only in combination with chassis size 2 see exclusions 31.1) Inclusive
<input type="radio"/>	EU034	<b>AGM 75 Ah (C5) / 85 Ah (C20)</b> (Ø 250 Ladezyklen; possible only in combination with chassis size 2) see exclusions 31.1) £768.00
<b>Battery charger</b>		
<input type="radio"/>	EU041	<b>Battery charger 8 A, fanless</b> (suitable only for batteries with 56 Ah (C5)) see exclusions 32.1) 32.3) Inclusive
<input type="radio"/>	EU042	<b>Battery charger 12 A, incl. external charging receptacle</b> (magnetic, installation side right) see exclusions 32.3) Inclusive
<b>Additional charging receptacle</b>		
<input type="radio"/>	EU043	<b>External charging receptacle</b> (magnetic, installation side right; possible only with EU040; recommended with an existing 12 A battery charger) see exclusions 75.1) £205.00
<b>Caster wheel swing arm</b>		
<input type="radio"/>	EF001	<b>Suspension</b> £161.00
<input type="radio"/>	EF002	<b>No suspension</b> see exclusions 5.1) 19.3) Inclusive
<b>Caster wheels</b>		
<input type="radio"/>	EF003	<b>6" PU Komfort</b> (only for MWD) see exclusions 19.1) 64.6) Inclusive
<input type="radio"/>	EF009	<b>6" PU Performance</b> (only for MWD, harder rubber mixture) see exclusions 19.1) 64.6) £47.00
<input type="radio"/>	EF005	<b>9" pneumatic, puncture-resistant</b> see exclusions 19.3) Inclusive
<input type="radio"/>	EF006	<b>9" puncture-proof</b> see exclusions 19.3) Inclusive
<input type="radio"/>	EF007	<b>10" pneumatic, puncture-resistant</b> see exclusions 19.3) Inclusive
<input type="radio"/>	EF008	<b>10" puncture-proof</b> see exclusions 19.3) Inclusive
<b>Drive wheels</b>		
<input type="radio"/>	EG001	<b>14" pneumatic, puncture-resistant</b> Inclusive
<input type="radio"/>	EG002	<b>14" puncture-proof</b> Inclusive
<b>Tyre colour</b>		
<input type="radio"/>	EG011	<b>Grey</b> Inclusive
<input type="radio"/>	EG012	<b>Black</b> Inclusive
<b>Tread</b>		
<input type="radio"/>	EG013	<b>Ribs</b> (only with tyre colour grey) see exclusions 37.1) Inclusive
<input type="radio"/>	EG014	<b>Lugs</b> see exclusions 19.3) Inclusive
<input type="radio"/>	EG015	<b>Caster wheels with ribs, drive wheels with lugs</b> see exclusions 37.2) Inclusive

# Power wheelchair *Juvo B6*.

## Wheelchair colour

<input type="radio"/>	002	Anthrazit metallic	Inclusive	<input type="radio"/>	016	Silver metallic	Inclusive
<input type="radio"/>	003	Jet black RAL 9005	Inclusive	<input type="radio"/>	017	Yellow RAL 1023	Inclusive
<input type="radio"/>	004	Ice blue	Inclusive	<input type="radio"/>	018	Signal red RAL 3001	Inclusive
<input type="radio"/>	005	Sparkle light orange	Inclusive	<input type="radio"/>	021	Sparkle granny-smith	Inclusive
<input type="radio"/>	009	Vinho Sparkle	Inclusive	<input type="radio"/>	022	Creame RAL 9001	Inclusive
<input type="radio"/>	012	Sky blue	Inclusive	<input type="radio"/>	023	White RAL 9016	Inclusive
<input type="radio"/>	013	Jet black RAL 9005 matte	Inclusive	<input type="radio"/>	027	Shimano matt	Inclusive
<input type="radio"/>	014	Candy red	Inclusive	<input type="radio"/>	037	Pink RAL 4010	Inclusive

## Chassis accessories

<input type="radio"/>	EA010	<b>Splash guard for drive wheels</b> (included on FWD; not possible in conjunction with the combination of RWD, VAS and SH 43 cm) see exclusions 39.1) bis 39.3)	£102.00
<input type="radio"/>	EA011	<b>Splash guard for caster wheels</b>	£40.00

## Caster wheel swivel lock

<input type="radio"/>	EF020	<b>Mechanical</b> (possible only in conjunction with the combination of splash guard for drive wheels and splash guard for caster wheels) see exclusions 19.3) 40.1)	£472.00
-----------------------	-------	--	---------

## Chassis safety accessories

<input type="radio"/>	EF021	<b>Curb climbing assist</b> (only for RWD) see exclusions 19.1) 19.3) 41.2)	£381.00
<input type="radio"/>	ES002	<b>Kit for vehicle transport</b> (not possible in combination with ED036; max. load capacity 140 kg) see exclusions 4.1) 41.1)	Inclusive
<input type="radio"/>	ES013	<b>Ottobock installation kit for Dahl docking system</b> see exclusions 4.1) 41.1) 41.3)	£125.00

## Zubehör allgemein

<input type="checkbox"/>	ES003	<b>Pocket for mobile phone</b>	£59.00
<input type="checkbox"/>	ES004	<b>Luggage carrier</b> see exclusions 5.1)	£268.00
<input type="checkbox"/>	ES005	<b>Crutch holder</b>	£136.00
<input type="checkbox"/>	ES006	<b>Rear-view mirror</b> (installation side across from control panel side or swivel mechanism for mid-tray control or TEN° tray module) see exclusions 42.1)	£202.00
<input type="checkbox"/>	ES007	<b>Tool kit</b>	£70.00
<input type="checkbox"/>	ES010	<b>Beverage holder</b>	£30.00
<input type="checkbox"/>	ES011	<b>Airman pump</b>	£285.00
<input type="checkbox"/>	ET001	<b>External horn</b>	£553.00
<input type="checkbox"/>	ES012	<b>Therapy tray</b> (swivel mechanism across from control panel side; not possible in combination with ES006) see exclusions 42.2) 42.3)	£472.00
<input type="checkbox"/>	ES023	<b>Backpack hooks</b> see exclusions 10.1)	£87.00
<input type="checkbox"/>	ES305	<b>Backpack with Ottobock logo</b>	£63.00
<input type="checkbox"/>	ES306	<b>Catheter bag, large</b>	£46.00

## Receptacle for external power supply, right (front right next to safety switch, mandatory information) see exclusions 43.0) 43.1)

<input type="radio"/>	ET002	<b>12 V</b>	£355.00
<input type="radio"/>	ET003	<b>24 V</b>	£143.00
<input type="radio"/>	ET004	<b>USB</b>	£160.00

## Power wheelchair *Juvo B6*.

**Receptacle for external power supply, left** (front left next to safety switch, mandatory information) see exclusions 44.0) 44.1)

<input type="radio"/>	ET005	<b>12 V</b> (not possible in combination with receptacle for external power supply, right, 12 V or 24 V) see exclusions 44.2)	£355.00
<input type="radio"/>	ET006	<b>24 V</b> (not possible in combination with receptacle for external power supply, right, 12 V or 24 V) see exclusions 44.2)	£143.00
<input type="radio"/>	ET007	<b>USB</b>	£160.00

**Lighting** see exclusions 63.0)

<input type="radio"/>	ES021	<b>Electric lighting according to German Motor Vehicle Safety Standards (StVZO)</b>	£758.00
-----------------------	-------	---	---------

**Control device**

<input type="radio"/>	EU050	<b>VR2 (90 A), without power functions and lighting</b> (not recommended for user weight > 120 kg) see exclusions 45.1) 45.4) to 45.6)	Inclusive
<input type="radio"/>	EU051	<b>VR2 (90 A), max. 2 power functions and lighting possible</b> (not recommended for user weight > 120 kg) see exclusions 45.3) to 45.5) 45.7)	Inclusive
<input type="radio"/>	EU061	<b>VR2 (90 A) power module with tray module, manual flip over (max. 2 power functions and lighting are possible)</b> see exclusions 42.1) 45.3) to 45.5) 45.7)	£1566.00
<input type="radio"/>	EU053	<b>R-net/TEN° (120 A) power module</b> (mandatory for 14 km/h, recommended for >150 kg user weight)	£1161.00

**Input for R-net/TEN° power module** see exclusions 46.0)

<input type="radio"/>	EU079	<b>R-net LED hand module</b>	£788.00
<input type="radio"/>	EU065	<b>TEN° hand module, standard colour Shimano matte</b>	Inclusive
<input type="radio"/>	EU066	<b>TEN° hand module, colour selectable</b>	£89.00
<input type="radio"/>	EU063	<b>TEN° (120 A), tray module, electrical flip over</b> (incl. 1 Piko button for rotation) exclusions see 42.1) 42.3) Note: The supplied horn can be perceived as too quiet; Ottobock recommends the use of an external horn, if no TEN° Display module is used	£2577.00

**Colour for TEN° hand module** (possible only in combination with control panel TEN°, mandatory information) see exclusions 47.0) 47.1)

<input type="radio"/>	EU002	<b>Anthrazit metallic</b>	Inclusive	<input type="radio"/>	EU016	<b>Silver metallic</b>	Inclusive
<input type="radio"/>	EU003	<b>Jet black RAL 9005</b>	Inclusive	<input type="radio"/>	EU017	<b>Yellow RAL 1023</b>	Inclusive
<input type="radio"/>	EU004	<b>Ice blue</b>	Inclusive	<input type="radio"/>	EU018	<b>Signal red RAL 3001</b>	Inclusive
<input type="radio"/>	EU005	<b>Sparkle light orange</b>	Inclusive	<input type="radio"/>	EU021	<b>Sparkle granny-smith</b>	Inclusive
<input type="radio"/>	EU009	<b>Vinho Sparkle</b>	Inclusive	<input type="radio"/>	EU022	<b>Creame RAL 9001</b>	Inclusive
<input type="radio"/>	EU012	<b>Sky blue</b>	Inclusive	<input type="radio"/>	EU023	<b>White RAL 9016</b>	Inclusive
<input type="radio"/>	EU013	<b>Jet black RAL 9005 matte</b>	Inclusive	<input type="radio"/>	EU029	<b>Pink RAL 4010</b>	Inclusive
<input type="radio"/>	EU014	<b>Candy red</b>	Inclusive				

**Joystick for TEN° tray module** see exclusions 80.0) 80.1)

<input type="radio"/>	EU116	<b>Required force 250 g</b>	Inclusive
<input type="radio"/>	EU117	<b>Required force 120 g</b>	Inclusive

**External buttons** (connection on TEN° control panel or tray module; possible only in combination with TEN° (120 A) control device or TEN° tray module, electrical flip-over) see exclusions 48.0)

<input type="radio"/>	EU067	<b>2 Piko buttons, diameter 50 mm</b> (red/black)	£421.00
<input type="radio"/>	EU068	<b>2 Piko buttons, diameter 30 mm</b> (red/black)	£421.00
<input type="radio"/>	EU097	<b>Button module</b> (for power seat functions, installation opposite control panel side)	£1496.00
<input type="radio"/>	EU098	<b>Button module</b> (for power seat functions) <b>incl. 1 Piko button diameter 30 mm</b> (for installation on TEN° control panel, Piko button red for on/off)	£1708.00
<input type="radio"/>	EU099	<b>Button module</b> (for power seat functions) <b>incl. 1 Piko button diameter 50 mm</b> (for installation on TEN° control panel, Piko button red for on/off)	£1708.00

## Power wheelchair *Juvo B6*.

### Holder for hand module see exclusions 49.0) 49.2)

<input type="radio"/>	EU070	Control panel holder, <b>standard</b> (possible only in combination with VR2) see exclusions 49.3)	Inclusive
<input type="radio"/>	EU071	Control panel holder, <b>swing-away in parallel, height-adjustable</b>	£135.00
<input type="radio"/>	EU072	Control panel holder, <b>swing-away in parallel, 9.5 cm height-adjustable</b>	£161.00

### Mounting material tray for TEN° tray module see exclusions 80.0) 80.1)

<input type="radio"/>	ES014	Tray with attachment, <b>TEN° tray module centrally mounted</b>	£1051.00
<input type="radio"/>	ES015	Tray (without cut-out) <b>with attachment, incl. cutting template for TEN° tray module</b> (for individual placement by the dealer)	£745.00
<input type="radio"/>	ES016	<b>Attachment only, incl. cutting template for TEN° tray module</b> (for individual placement by the dealer)	£562.00
<input type="radio"/>	ES017	<b>Cutting template for TEN° tray module</b> (for individual placement by the dealer)	£103.00

### Mounting side for holder for hand module or tray

(for VR2, for mid-tray control (MTC) or TEN° tray module; mandatory information) see exclusions 50.0) 50.1)

<input type="radio"/>	<b>Right</b>
<input type="radio"/>	<b>Left</b>

### Joystick top

<input type="radio"/>	EU080	Fork for <b>tetraplegics, horizontal</b> (adjustable for hand width 70 - 90 mm) see exclusions 51.1) 51.2)	£135.00
<input type="radio"/>	EU081	<b>Stick S80</b> (special joystick handle 80 mm) see exclusions 51.1) 51.2)	£119.00
<input type="radio"/>	EU082	<b>Soft ball, black cover</b> see exclusions 51.1) 51.2)	£202.00
<input type="radio"/>	EU083	<b>Ball top, smal</b> (diameter 43 mm) see exclusions 51.1) 51.2)	£136.00
<input type="radio"/>	EU084	<b>Ball top, large</b> (diameter 48 mm) see exclusions 51.1) 51.2)	£125.00
<input type="radio"/>	EU085	<b>Soft balls</b> see exclusions 51.1)	£244.00

### Module for control device R-net/TEN° (possible only in combination with TEN° control device) see exclusions 46.0) 52.0)

<input type="radio"/>	EU054	<b>TEN° LCD module</b> (when using 1-switch scan drive, programming by service required; please order button separately; adapter switch box not required) see exclusions 52.0) 52.1)	£1914.00
<input type="radio"/>	EU055	<b>Input/Output module</b> (required e.g. for Easywave radio control) see exclusions 52.2) 52.3)	£985.00

### Holder for TEN° LCD module (possible only in combination with TEN° LCD module, mandatory information) see exclusions 53.0) 53.1)

<input type="radio"/>	EU073	<b>Standard</b> (installation across from control panel side; not possible in combination with tray) see exclusions 42.1) 51.2)	£98.00
<input type="radio"/>	EU074	<b>With gooseneck</b> (installation across from control panel side; not possible in combination with tray) see exclusions 42.1) 51.2)	£303.00
<input type="radio"/>	EU075	<b>With gooseneck for tray</b> (included)	£227.00

### Special input device for TEN° LCD-Modul (possible only in combination with TEN° LCD module) see exclusions 52.0) 53.0)

<input type="radio"/>	EU100	<b>mo-Vis micro joystick</b> (required force 10 g)	£4453.00
<input type="radio"/>	EU101	<b>mo-Vis multi joystick</b> (required force 50 g)	£4068.00
<input type="radio"/>	EU102	<b>mo-Vis all-round joystick light</b> (required force 120 g)	£3371.00
<input type="radio"/>	EU128	<b>mo-Vis all-round joystick</b> (required force 250 g)	£2146.00
<input type="radio"/>	EU129	<b>mo-Vis all-round heavy duty joystick</b> (required force 650 g)	£4139.00
<input type="radio"/>	EU150	<b>Calibratable mini joystick</b>	£1096.00
<input type="radio"/>	EU103	<b>Sip and puff control</b> (possible only in combination with Recaro seat and seating system) see exclusions 25.1)	£1399.00
<input type="radio"/>	EU104	<b>Button control</b> (for 3 or 4 buttons as driving input via adapter box, 2 additional buttons included on/off + mode on TEN° LCD module)	£789.00

## Power wheelchair *Juvo B6*.

### Top for calibratable mini joystick see exclusions 84.0) 84.1)

<input type="radio"/>	EU131	Soft ball with elastomer	£151.00
<input type="radio"/>	EU132	Soft ball with spring, hard	£115.00
<input type="radio"/>	EU133	Soft ball with spring, soft	£115.00
<input type="radio"/>	EU134	Control knob with elastomer	£113.00

### Number of buttons for button control (possible only in comb. with button control, mandatory information) see exclusions 55.0) 55.1)

<input type="radio"/>	3 Buttons
<input type="radio"/>	4 Buttons

### Button 1 for button control (mandatory information with number of buttons for button control = 3, 4; only in combination with number of buttons for button control = 3, 4) see exclusions 72.0) 72.1)

<input type="radio"/>	EU086	Piko button diameter 50 mm red	£202.00
<input type="radio"/>	EU087	Piko button diameter 50 mm yellow	£202.00
<input type="radio"/>	EU088	Piko button diameter 50 mm black	£202.00
<input type="radio"/>	EU089	Piko button diameter 50 mm silver	£202.00
<input type="radio"/>	EU090	Piko button diameter 30 mm red	£202.00
<input type="radio"/>	EU091	Piko button diameter 30 mm yellow	£202.00
<input type="radio"/>	EU092	Piko button diameter 30 mm black	£202.00
<input type="radio"/>	EU093	Piko button diameter 30 mm silver	£202.00

### Button 2 for button control (mandatory information with number of buttons for button control = 3, 4; only in combination with number of buttons for button control = 3, 4) see exclusions 72.0) 72.1)

<input type="radio"/>	EU186	Piko button diameter 50 mm red	£202.00
<input type="radio"/>	EU187	Piko button diameter 50 mm yellow	£202.00
<input type="radio"/>	EU188	Piko button diameter 50 mm black	£202.00
<input type="radio"/>	EU189	Piko button diameter 50 mm silver	£202.00
<input type="radio"/>	EU190	Piko button diameter 30 mm red	£202.00
<input type="radio"/>	EU191	Piko button diameter 30 mm yellow	£202.00
<input type="radio"/>	EU192	Piko button diameter 30 mm black	£202.00
<input type="radio"/>	EU193	Piko button diameter 30 mm silver	£202.00

### Button 3 for button control (mandatory information with number of buttons for button control = 3, 4; only in combination with number of buttons for button control = 3, 4) see exclusions 72.0) 72.1)

<input type="radio"/>	EU286	Piko button diameter 50 mm red	£202.00
<input type="radio"/>	EU287	Piko button diameter 50 mm yellow	£202.00
<input type="radio"/>	EU288	Piko button diameter 50 mm black	£202.00
<input type="radio"/>	EU289	Piko button diameter 50 mm silver	£202.00
<input type="radio"/>	EU290	Piko button diameter 30 mm red	£202.00
<input type="radio"/>	EU291	Piko button diameter 30 mm yellow	£202.00
<input type="radio"/>	EU292	Piko button diameter 30 mm black	£202.00
<input type="radio"/>	EU293	Piko button diameter 30 mm silver	£202.00

## Power wheelchair *Juvo B6*.

**Button 4 for button control** (mandatory information with number of buttons for button control = 3, 4; only in combination with number of buttons for button control = 3, 4) see exclusions 74.0) 74.1)

<input type="radio"/>	EU386	<b>Piko button diameter 50 mm red</b>	£202.00
<input type="radio"/>	EU387	<b>Piko button diameter 50 mm yellow</b>	£202.00
<input type="radio"/>	EU388	<b>Piko button diameter 50 mm black</b>	£202.00
<input type="radio"/>	EU389	<b>Piko button diameter 50 mm silver</b>	£202.00
<input type="radio"/>	EU390	<b>Piko button diameter 30 mm red</b>	£202.00
<input type="radio"/>	EU391	<b>Piko button diameter 30 mm yellow</b>	£202.00
<input type="radio"/>	EU392	<b>Piko button diameter 30 mm black</b>	£202.00
<input type="radio"/>	EU393	<b>Piko button diameter 30 mm silver</b>	£202.00

**Special input device** (direct connection to the bus system; possible only in combination with TEN° control device; not possible in combination with special controls with TEN° LCD module) see exclusions 46.0) 48.0) 57.0)

<input type="radio"/>	EU105	<b>mo-Vis micro joystick</b> (required force 10 g)	£4618.00
<input type="radio"/>	EU106	<b>mo-Vis multi joystick</b> (required force 50 g)	£4349.00
<input type="radio"/>	EU107	<b>mo-Vis all-round joystick light</b> (required force 120 g)	£3642.00
<input type="radio"/>	EU108	<b>mo-Vis all-round joystick</b> (required force 250 g)	£2542.00
<input type="radio"/>	EU109	<b>mo-Vis all-round heavy duty joystick</b> (required force 650 g)	£4545.00

**Holder for special input device** see exclusions 58.0) 58.1)

<input type="radio"/>	EU076	<b>Power swivel arm, installation side left on the back support</b> (to hold joysticks, sip & puff and button controls) see exclusions 42.3) 58.2) 58.4) 58.7)	£2956.00
<input type="radio"/>	EU077	<b>Power swivel arm, installation side right on the back support</b> (to hold joysticks, sip & puff and button controls) see exclusions 42.3) 58.2) 58.4) 58.7)	£2956.00
<input type="radio"/>	EU078	<b>Holder for tray</b> (must be installed by the customer) see exclusions 42.3)	£653.00
<input type="radio"/>	EU110	<b>Holder for arm support incl. 1 finger button</b> (for on/off, installation on control panel side) see exclusions 58.6)	£330.00
<input type="radio"/>	EU111	<b>Holder for arm support incl. 2 finger buttons</b> (for on/off, installation on control panel side) see exclusions 58.5)	£515.00
<input type="radio"/>	EU112	<b>Holder for arm support incl. 1 piko button</b> (diameter 30 mm red for on/off, installation on control panel side) see exclusions 58.6)	£358.00
<input type="radio"/>	EU113	<b>Holder for arm support incl. 2 piko buttons</b> (diameter 30 mm red/black for on/off and mode, installation on control panel side) see exclusions 58.5)	£571.00
<input type="radio"/>	EU118	<b>Without attachment incl. 2 Piko-Buttons</b> (diameter 30 mm red/black for on/off and mode)	£499.00

**Actuator module for R-net/TEN° control device** see exclusions 46.0) 59.0) 59.1)

<input type="radio"/>	EU056	<b>Actuator module</b> (required for lighting and/or power seat functions on TEN° (120 A)	Inclusive
-----------------------	-------	---	-----------

**Control device accessories**

<input type="checkbox"/>	EU057	<b>Attendant control</b> see exclusions 60.2)	£833.00
<input type="checkbox"/>	EU094	<b>Easywave radio module</b> (possible only in combination with input/output module) see exclusions 60.1)	£380.00

**Attendant control installation side** (possible only in combination with attendant control; mandatory information) see exclusions 61.0) 61.1)

<input type="radio"/>		<b>Right</b> see exclusions 61.2)	
<input type="radio"/>		<b>Left</b>	

## Power wheelchair *Juvo B6*.

**Track stabiliser** (mandatory information in conjunction with the combination of front-wheel drive and VR2 control device or front-wheel drive and TEN° control device) see exclusions 64.0)

<input type="radio"/>	EF022	<b>Mechanical</b> (not possible in comb. with drive type MWD; possible only in comb. with chassis acc. splash guard for caster wheels; not possible in comb. of drive type FWD and speed > 7,2 km/h) see exclusions 19.3) 40.2) 64.3)	Inclusive
<input type="radio"/>	EF023	<b>Power</b> (gyro-module, included for FWD 10 km/h; not in combination with FWD and VR2; depending on terrain, the specified driving distance range can be reduced when using a gyro) see exclusions 2.1) 46.0)	£658.00
<input type="radio"/>	EF024	<b>Mechanical incl. ASM</b> (stability control; only in combination with TEN°, only for Australia, Canada or USA, not for RWD) see exclusions 19.3) 46.0) 64.5) 64.6)	£470.00

**Memory module for power seat functions** (possible only in combination with TEN° (120A) control device or TEN° tray module, electrical flip-over) see exclusions 46.0)

<input type="radio"/>	EU122	<b>Back support angle adjustment, pre-programmed, 20°</b> see exclusions 77.1) 77.2)	£568.00
<input type="radio"/>	EU123	<b>Seat tilt, pre-programmed, 20°</b> see exclusions 77.2) 77.3)	£582.00
<input type="radio"/>	EU124	<b>Back support angle adjustment/seat tilt, pre-programmed 35°/15°</b> see exclusions 77.4) bis 77.6)	£1212.00

### Option for electric seat adjustment

<input type="radio"/>	EU127	<b>Speed limiter</b> (sum angle >35°) see exclusions 77.3) 82.0) 82.1)	£260.00
-----------------------	-------	--	---------

### Drive unit

<input type="radio"/>	ET010	<b>Standard</b> (max. user weight 140 kg; possible only in comb. with overall weight <= 260 kg; not possible in combination with TEN° control device (120A) or TEN° tray module, electrical flip-over)) see exclusions 4.1) 45.2) 65.1)	Inclusive
<input type="radio"/>	ET016	<b>Performance</b> (recommended for user weight > 100 kg; widening size 1 to 620 mm)	Inclusive
<input type="radio"/>	ET011	<b>High performance</b> (recommended for user weight > 100 kg; mandatory 14 km/h; (widening size 1 to 620 mm)	£660.00

### Speed

<input type="radio"/>	ET012	<b>6 km/h</b>	Inclusive
<input type="radio"/>	ET013	<b>7,2 km/h</b> see exclusions 66.1)	Inclusive
<input type="radio"/>	ET014	<b>10 km/h</b> (not in combination with FWD and VR2) see exclusions 5.1) 45.4) 64.2) 66.1) 66.5) 66.6)	Inclusive
<input type="radio"/>	ET015	<b>14 km/h</b> (only in comb. with RWD and TEN° (120A)) see exclusions 19.1) 45.2) 46.0) 66.1) 66.3) 66.4)	Inclusive

**Drive unit warranty extension** (only for drive motors, not for actuators)

<input type="radio"/>	EW002	<b>From 24 months to 48 months</b> (the Mobility Solutions GmbH terms and exclusions apply) see exclusions 5.1)	£95.00
-----------------------	-------	---	--------

**Additional instructions for use** (additional IFU for non-national languages) see exclusions 68.0)

<input type="checkbox"/>	ES028	<b>Qualified personnel</b>	£24.00
<input type="checkbox"/>	ES029	<b>User</b>	£24.00

**Power wheelchair *Juvo B6.***



**EC001-EC004  
Standard seat**



**EC005 VAS (Vario Adjust  
Seat)**



**EC006 Recaro n-Joy**



**ED050/051 Contour back  
support pad AD**



**ED008 Recaro seating sys-  
tem seat bottom F**



**ED009 Recaro seating sys-  
tem seat bottom X**



**ED010 Recaro seating sys-  
tem seat bottom W**



**ED036 Baxx aluminium flat  
top back support**



**ED031 Recaro LT**



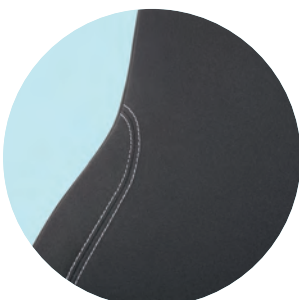
**ED030 Recaro LX**



**EC020/ED034 Contour seat  
with flat contour**



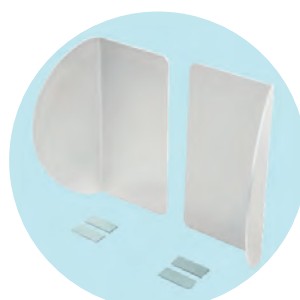
**EC021/ED035 Contour seat  
with deep contour**



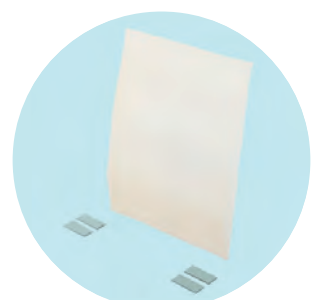
**EC022/ED037 Fabric cover  
for contour seat**



**EC023/ED038 Synthetic  
leather for contour seat**



**ED039 Side panels**



**ED040 Lumbar support**



**Power wheelchair *Juvo B6*.**



**EP002 Lap belt with metal buckle**



**EP003 Lap belt with plastic buckle**



**EP020 Lap belt with rewin-der, metal buckle**



**EP005 - EP007 Dynamic harness**



**EP008 - EP010 Sternum harness**



**EP011 - EP013 Slimline ster-num harness**



**EP014 - EP017 Shoulder har-ness**



**EL001 Gooseneck**



**EL002 Multi-axis, offset**



**EL003 Multi-axis, straight**



**EL031 UniLink head support holder, multi-axis**



**EL033/EL034/EL035 Com-fort Plus**



**EL036/EL037 Combo**



**EL006/007 Head support, small/large**



**EL013/014 Combination head/neck support small/large**



**EL015/016 head/neck sup-port X-shape, small/large**

## Power wheelchair *Juvo B6*.



**EE024** Flip-up arm support



**EC025** Power seat tilt



**EC026** Power seat height adjustment 35 cm



**EB003** Power elevating leg support, separate control



**EB013** Centrally mounted leg support



**EB007** Individual aluminium foot plate



**EB017** Lock for single panel foot plate



**EU043** External magnetic charging receptacle



**EU041** Battery charger 8 A, fanless



**EU044** Battery charger 10 A, fanless (IP54)



**EU046** Battery charger 10 A, with fan



**EU042** Battery charger 12 A, incl. external charging receptacle



**EG013** Ribs



**EG014** Lugs



**EG015** Caster wheel with ribs



**EF020** Caster wheel swivel lock

## Power wheelchair *Juvo B6*.



**EF021 Curb climbing assist**



**ES002 Kit for vehicle transport**



**ES013 Dahl docking system installation kit**



**ES003 Pocket for mobile phone**



**ES004 Luggage carrier**



**ES005 Crutch holder**



**ES006 Rearview mirror**



**ES010 Beverage holder**



**ES023 Backpack holder**



**ES305 Backpack with Ottobock logo**



**ES306 Catheter bag, large**



**ET002/005 12V**



**ET004/007 USB**



**ES020/021 Electr. lighting for footpaths**

**Power wheelchair *Juvo B6.***



**EU050/051 VR2**



**EU053 TEN° hand module**



**EU063 TEN° tray module, electrical flip over**



**EF001 Caster wheel swing arm, spring-mounted**



**EU098 Button module**



**EU054 TEN° LCD module**



**EU057 Attendant control**



**EU080 Fork for Tetraplegics, horizontal**



**EU081 Stick S80**



**EU082 Soft ball, black cover**



**EU083 Ball top, small**



**EU084 Ball top, large**



**EU085 Soft ball**



**EU110-113 3 Holder for arm support**



**EU111 mo-Vis Joystick incl. 2 finger buttons**

**Power wheelchair *Juvo B6*.**



**EU100/105 mo-Vis micro joystick**



**EU101/106 mo-Vis multi joystick**



**EU102/107 mo-Vis allround joystick light**



**EU103 Sip and puff control**

**Power wheelchair Juvo B6.**

**Overview possible combinations centrally mounted leg support - standard seat junior and standard seat small**

			SH [cm]		45		47		49		51		53		55		57		
SD [cm]	Chassis size	Equipment	MW	FW	MW	RW	FW	MW	RW	FW	MW	RW	MW	RW	MW	RW	RW		
34	1	without tilt	Green	Red	Green	Red	Red	Green	Red	Red	Green	Red	Green	Red	Green	Red	Red		
		with seat lift and tilt	Red	Green	Green	Red	Red	Green	Red	Red	Green	Red	Green	Red	Green	Red	Red		
		with tilt	Red	Green	Green	Red	Green	Green	Green	Green	Green	Green	Green	Green	Green	Green	Green	Green	
	2	without tilt	Green	Red	Green	Red	Red	Green	Red	Red	Green	Red	Green	Red	Green	Red	Red	Red	
		with seat lift and tilt	Red	Green	Green	Red	Red	Green	Red	Red	Green	Red	Green	Red	Green	Red	Red	Red	
		with tilt	Red	Green	Green	Red	Green	Green	Green	Green	Green	Green	Green	Green	Green	Green	Green	Green	
36	1	without tilt	Green	Red	Green	Red	Red	Green	Red	Red	Green	Red	Green	Red	Green	Red	Red	Red	
		with seat lift and tilt	Red	Green	Green	Red	Red	Green	Red	Red	Green	Red	Green	Red	Green	Red	Red	Red	
		with tilt	Red	Green	Green	Red	Green	Green	Green	Green	Green	Green	Green	Green	Green	Green	Green	Green	
	2	without tilt	Green	Red	Green	Red	Red	Green	Red	Red	Green	Red	Green	Red	Green	Red	Red	Red	Red
		with seat lift and tilt	Red	Green	Green	Red	Red	Green	Red	Red	Green	Red	Green	Red	Green	Red	Red	Red	Red
		with tilt	Red	Green	Green	Red	Green	Green	Green	Green	Green	Green	Green	Green	Green	Green	Green	Green	Green
38	1	without tilt	Green	Red	Green	Red	Red	Green	Red	Red	Green	Red	Green	Red	Green	Red	Red	Red	
		with seat lift and tilt	Red	Green	Green	Red	Red	Green	Red	Red	Green	Red	Green	Red	Green	Red	Red	Red	
		with tilt	Red	Green	Green	Red	Green	Green	Green	Green	Green	Green	Green	Green	Green	Green	Green	Green	
	2	without tilt	Green	Red	Green	Red	Red	Green	Red	Red	Green	Red	Green	Red	Green	Red	Red	Red	Red
		with seat lift and tilt	Red	Green	Green	Red	Red	Green	Red	Red	Green	Red	Green	Red	Green	Red	Red	Red	Red
		with tilt	Red	Green	Green	Red	Green	Green	Green	Green	Green	Green	Green	Green	Green	Green	Green	Green	Green
40	1	without tilt	Green	Red	Green	Red	Red	Green	Red	Red	Green	Red	Green	Red	Green	Red	Red	Red	
		with seat lift and tilt	Red	Green	Green	Red	Red	Green	Red	Red	Green	Red	Green	Red	Green	Red	Red	Red	
		with tilt	Red	Green	Green	Red	Green	Green	Green	Green	Green	Green	Green	Green	Green	Green	Green	Green	
	2	without tilt	Green	Red	Green	Red	Red	Green	Red	Red	Green	Red	Green	Red	Green	Red	Red	Red	Red
		with seat lift and tilt	Red	Green	Green	Red	Red	Green	Red	Red	Green	Red	Green	Red	Green	Red	Red	Red	Red
		with tilt	Red	Green	Green	Red	Green	Green	Green	Green	Green	Green	Green	Green	Green	Green	Green	Green	Green
42	1	without tilt	Green	Red	Green	Red	Red	Green	Red	Red	Green	Red	Green	Red	Green	Red	Red	Red	
		with seat lift and tilt	Red	Green	Green	Red	Red	Green	Red	Red	Green	Red	Green	Red	Green	Red	Red	Red	
		with tilt	Red	Green	Green	Red	Green	Green	Green	Green	Green	Green	Green	Green	Green	Green	Green	Green	
	2	without tilt	Green	Red	Green	Red	Red	Green	Red	Red	Green	Red	Green	Red	Green	Red	Red	Red	Red
		with seat lift and tilt	Red	Green	Green	Red	Red	Green	Red	Red	Green	Red	Green	Red	Green	Red	Red	Red	Red
		with tilt	Red	Green	Green	Red	Green	Green	Green	Green	Green	Green	Green	Green	Green	Green	Green	Green	Green
44	1	without tilt	Green	Red	Green	Red	Red	Green	Red	Red	Green	Red	Green	Red	Green	Red	Red	Red	
		with seat lift and tilt	Red	Green	Green	Red	Red	Green	Red	Red	Green	Red	Green	Red	Green	Red	Red	Red	
		with tilt	Red	Green	Green	Red	Green	Green	Green	Green	Green	Green	Green	Green	Green	Green	Green	Green	
	2	without tilt	Green	Red	Green	Red	Red	Green	Red	Red	Green	Red	Green	Red	Green	Red	Red	Red	Red
		with seat lift and tilt	Red	Green	Green	Red	Red	Green	Red	Red	Green	Red	Green	Red	Green	Red	Red	Red	Red
		with tilt	Red	Green	Green	Red	Green	Green	Green	Green	Green	Green	Green	Green	Green	Green	Green	Green	Green
46	1	without tilt	Green	Red	Green	Red	Red	Green	Red	Red	Green	Red	Green	Red	Green	Red	Red	Red	
		with seat lift and tilt	Red	Green	Green	Red	Red	Green	Red	Red	Green	Red	Green	Red	Green	Red	Red	Red	
		with tilt	Red	Green	Green	Red	Green	Green	Green	Green	Green	Green	Green	Green	Green	Green	Green	Green	
	2	without tilt	Green	Red	Green	Red	Red	Green	Red	Red	Green	Red	Green	Red	Green	Red	Red	Red	Red
		with seat lift and tilt	Red	Green	Green	Red	Red	Green	Red	Red	Green	Red	Green	Red	Green	Red	Red	Red	Red
		with tilt	Red	Green	Green	Red	Green	Green	Green	Green	Green	Green	Green	Green	Green	Green	Green	Green	Green

Green: Combination possible      Red: Combination not possible

© Ottobock - 647E566=en - MASTER-14-2401 - Technical modifications and printing errors reserved - November 2024 - V1

**Power wheelchair Juvo B6.**

**Overview possible combinations centrally mounted leg support - standard seat large and standard seat XL**

SD [cm]	Chassis size	SH [cm]	43			45			47 SS large			47 SS XL			49 SS large			49 SS XL			
			Equipment	FW	RW	FW	MW	RW	FW	MW	RW	FW	MW	RW	FW	MW	RW	FW	MW	RW	
42	1	A	Green	Green	Green	Green	Green	Green	Green	Green	Green	Green	Green	Green	Green	Green	Green	Green	Green	Green	
		B	Red	Red	Red	Red	Red	Red	Red	Red	Red	Red	Red	Red	Red	Red	Red	Red	Red	Red	Red
		C	Green	Green	Green	Green	Green	Green	Green	Green	Green	Green	Green	Green	Green	Green	Green	Green	Green	Green	Green
	2	A	Red	Red	Red	Green	Red	Red	Red	Red	Red	Red	Red	Red	Red	Red	Red	Red	Red	Red	Red
		B	Red	Red	Red	Red	Red	Red	Red	Red	Red	Red	Red	Red	Red	Red	Red	Red	Red	Red	Red
		C	Red	Red	Red	Red	Red	Red	Red	Red	Red	Red	Red	Red	Red	Red	Red	Red	Red	Red	Red
44	1	A	Red	Green	Red	Green	Red	Red	Red	Red	Red	Red	Red	Red	Red	Red	Red	Red	Red	Red	
		B	Red	Red	Red	Red	Red	Red	Red	Red	Red	Red	Red	Red	Red	Red	Red	Red	Red	Red	Red
		C	Red	Red	Red	Red	Red	Red	Red	Red	Red	Red	Red	Red	Red	Red	Red	Red	Red	Red	Red
	2	A	Red	Red	Red	Green	Red	Red	Red	Red	Red	Red	Red	Red	Red	Red	Red	Red	Red	Red	Red
		B	Red	Red	Red	Red	Red	Red	Red	Red	Red	Red	Red	Red	Red	Red	Red	Red	Red	Red	Red
		C	Red	Red	Red	Red	Red	Red	Red	Red	Red	Red	Red	Red	Red	Red	Red	Red	Red	Red	Red
46	1	A	Red	Green	Red	Green	Red	Red	Red	Red	Red	Red	Red	Red	Red	Red	Red	Red	Red	Red	
		B	Red	Red	Red	Red	Red	Red	Red	Red	Red	Red	Red	Red	Red	Red	Red	Red	Red	Red	Red
		C	Red	Red	Red	Red	Red	Red	Red	Red	Red	Red	Red	Red	Red	Red	Red	Red	Red	Red	Red
	2	A	Red	Red	Red	Green	Red	Red	Red	Red	Red	Red	Red	Red	Red	Red	Red	Red	Red	Red	Red
		B	Red	Red	Red	Red	Red	Red	Red	Red	Red	Red	Red	Red	Red	Red	Red	Red	Red	Red	Red
		C	Red	Red	Red	Red	Red	Red	Red	Red	Red	Red	Red	Red	Red	Red	Red	Red	Red	Red	Red
48	1	A	Green	Green	Green	Green	Green	Green	Green	Green	Green	Green	Green	Green	Green	Green	Green	Green	Green	Green	
		B	Red	Red	Red	Red	Red	Red	Red	Red	Red	Red	Red	Red	Red	Red	Red	Red	Red	Red	
		C	Red	Red	Red	Red	Red	Red	Red	Red	Red	Red	Red	Red	Red	Red	Red	Red	Red	Red	
	2	A	Red	Red	Red	Green	Red	Red	Red	Red	Red	Red	Red	Red	Red	Red	Red	Red	Red	Red	
		B	Red	Red	Red	Red	Red	Red	Red	Red	Red	Red	Red	Red	Red	Red	Red	Red	Red	Red	Red
		C	Red	Red	Red	Red	Red	Red	Red	Red	Red	Red	Red	Red	Red	Red	Red	Red	Red	Red	Red
50	1	A	Green	Green	Green	Green	Green	Green	Green	Green	Green	Green	Green	Green	Green	Green	Green	Green	Green	Green	
		B	Red	Red	Red	Red	Red	Red	Red	Red	Red	Red	Red	Red	Red	Red	Red	Red	Red	Red	
		C	Red	Red	Red	Red	Red	Red	Red	Red	Red	Red	Red	Red	Red	Red	Red	Red	Red	Red	
	2	A	Red	Red	Red	Green	Red	Red	Red	Red	Red	Red	Red	Red	Red	Red	Red	Red	Red	Red	
		B	Red	Red	Red	Red	Red	Red	Red	Red	Red	Red	Red	Red	Red	Red	Red	Red	Red	Red	Red
		C	Red	Red	Red	Red	Red	Red	Red	Red	Red	Red	Red	Red	Red	Red	Red	Red	Red	Red	Red


Combination possible  
 Combination not possible

A without tilt  
 B with seat lift and tilt  
 C with tilt

## Power wheelchair *Juvo B6*.

Continuation overview possible combinations centrally mounted leg support - standard seat large and standard seat XL

SD [cm]	Chassis size	SH [cm]	Equipment	51 SS large			51 SS XL			53		55		57
				FW	MW	RW	FW	MW	RW	MW	RW	MW	RW	RW
42	1		without tilt	Not possible	Possible	Possible	Not possible	Possible	Possible	Possible	Possible	Possible	Not possible	
			with seat lift and tilt	Not possible	Not possible	Not possible	Not possible	Not possible	Not possible	Not possible	Not possible	Not possible	Not possible	
			with til	Possible	Possible	Possible	Possible	Possible	Possible	Possible	Possible	Possible	Possible	Possible
	2		without tilt	Not possible	Possible	Not possible	Not possible	Possible	Not possible	Possible	Not possible	Possible	Not possible	Not possible
			with seat lift and tilt	Not possible	Not possible	Not possible	Not possible	Not possible	Not possible	Not possible	Not possible	Not possible	Not possible	Not possible
			with til	Possible	Possible	Possible	Possible	Possible	Possible	Possible	Possible	Possible	Possible	Possible
44	1		without tilt	Not possible	Possible	Not possible	Not possible	Possible	Not possible	Possible	Not possible	Possible	Not possible	Not possible
			with seat lift and tilt	Not possible	Not possible	Not possible	Not possible	Not possible	Not possible	Not possible	Not possible	Not possible	Not possible	Not possible
			with til	Possible	Possible	Possible	Possible	Possible	Possible	Possible	Possible	Possible	Possible	Possible
	2		without tilt	Not possible	Possible	Not possible	Not possible	Possible	Not possible	Possible	Not possible	Possible	Not possible	Not possible
			with seat lift and tilt	Not possible	Not possible	Not possible	Not possible	Not possible	Not possible	Not possible	Not possible	Not possible	Not possible	Not possible
			with til	Possible	Possible	Possible	Possible	Possible	Possible	Possible	Possible	Possible	Possible	Possible
46	1		without tilt	Not possible	Possible	Not possible	Not possible	Possible	Not possible	Possible	Not possible	Possible	Not possible	Not possible
			with seat lift and tilt	Not possible	Not possible	Not possible	Not possible	Not possible	Not possible	Not possible	Not possible	Not possible	Not possible	Not possible
			with til	Possible	Possible	Possible	Possible	Possible	Possible	Possible	Possible	Possible	Possible	Possible
	2		without tilt	Not possible	Possible	Not possible	Not possible	Possible	Not possible	Possible	Not possible	Possible	Not possible	Not possible
			with seat lift and tilt	Not possible	Not possible	Not possible	Not possible	Not possible	Not possible	Not possible	Not possible	Not possible	Not possible	Not possible
			with til	Possible	Possible	Possible	Possible	Possible	Possible	Possible	Possible	Possible	Possible	Possible
48	1		without tilt	Possible	Possible	Possible	Possible	Possible	Possible	Possible	Possible	Possible	Possible	Not possible
			with seat lift and tilt	Not possible	Not possible	Not possible	Not possible	Not possible	Not possible	Not possible	Not possible	Not possible	Not possible	Not possible
			with til	Possible	Possible	Possible	Possible	Possible	Possible	Possible	Possible	Possible	Possible	Possible
	2		without tilt	Possible	Possible	Possible	Possible	Possible	Possible	Possible	Possible	Possible	Possible	Not possible
			with seat lift and tilt	Not possible	Not possible	Not possible	Not possible	Not possible	Not possible	Not possible	Not possible	Not possible	Not possible	Not possible
			with til	Possible	Possible	Possible	Possible	Possible	Possible	Possible	Possible	Possible	Possible	Possible
50	1		without tilt	Possible	Possible	Possible	Possible	Possible	Possible	Possible	Possible	Possible	Possible	Not possible
			with seat lift and tilt	Not possible	Not possible	Not possible	Not possible	Not possible	Not possible	Not possible	Not possible	Not possible	Not possible	Not possible
			with til	Possible	Possible	Possible	Possible	Possible	Possible	Possible	Possible	Possible	Possible	Possible
	2		without tilt	Possible	Possible	Possible	Possible	Possible	Possible	Possible	Possible	Possible	Possible	Not possible
			with seat lift and tilt	Not possible	Not possible	Not possible	Not possible	Not possible	Not possible	Not possible	Not possible	Not possible	Not possible	Not possible
			with til	Possible	Possible	Possible	Possible	Possible	Possible	Possible	Possible	Possible	Possible	Possible

	Combination possible
	Combination not possible



# Power wheelchair Juvo B6.

## Overview possible combinations centrally mounted leg support - VAS

SD [cm]	Chassis size	SH [cm]	43		45			47			49			51			53		55		57		
			FW	RW	FW	MW	RW	FW	MW	RW	FW	MW	RW	FW	MW	RW	MW	RW	MW	RW	MW	RW	
38	1	A	Green	Green	Green	Green	Green	Green	Green	Green	Green	Green	Green	Green	Green	Green	Green	Green	Green	Green	Green	Green	
		B	Red	Red	Red	Red	Red	Red	Red	Red	Red	Red	Red	Red	Red	Red	Red	Red	Red	Red	Red	Red	Red
		C	Green	Green	Green	Green	Green	Green	Green	Green	Green	Green	Green	Green	Green	Green	Green	Green	Green	Green	Green	Green	Green
	2	A	Green	Green	Green	Green	Green	Green	Green	Green	Green	Green	Green	Green	Green	Green	Green	Green	Green	Green	Green	Green	Green
		B	Red	Red	Red	Red	Red	Red	Red	Red	Red	Red	Red	Red	Red	Red	Red	Red	Red	Red	Red	Red	Red
		C	Green	Green	Green	Green	Green	Green	Green	Green	Green	Green	Green	Green	Green	Green	Green	Green	Green	Green	Green	Green	Green
40	1	A	Green	Green	Green	Green	Green	Green	Green	Green	Green	Green	Green	Green	Green	Green	Green	Green	Green	Green	Green	Green	Green
		B	Red	Red	Red	Red	Red	Red	Red	Red	Red	Red	Red	Red	Red	Red	Red	Red	Red	Red	Red	Red	Red
		C	Green	Green	Green	Green	Green	Green	Green	Green	Green	Green	Green	Green	Green	Green	Green	Green	Green	Green	Green	Green	Green
	2	A	Green	Green	Green	Green	Green	Green	Green	Green	Green	Green	Green	Green	Green	Green	Green	Green	Green	Green	Green	Green	Green
		B	Red	Red	Red	Red	Red	Red	Red	Red	Red	Red	Red	Red	Red	Red	Red	Red	Red	Red	Red	Red	Red
		C	Green	Green	Green	Green	Green	Green	Green	Green	Green	Green	Green	Green	Green	Green	Green	Green	Green	Green	Green	Green	Green
42	1	A	Green	Green	Green	Green	Green	Green	Green	Green	Green	Green	Green	Green	Green	Green	Green	Green	Green	Green	Green	Green	Green
		B	Red	Red	Red	Red	Red	Red	Red	Red	Red	Red	Red	Red	Red	Red	Red	Red	Red	Red	Red	Red	Red
		C	Green	Green	Green	Green	Green	Green	Green	Green	Green	Green	Green	Green	Green	Green	Green	Green	Green	Green	Green	Green	Green
	2	A	Green	Green	Green	Green	Green	Green	Green	Green	Green	Green	Green	Green	Green	Green	Green	Green	Green	Green	Green	Green	Green
		B	Red	Red	Red	Red	Red	Red	Red	Red	Red	Red	Red	Red	Red	Red	Red	Red	Red	Red	Red	Red	Red
		C	Green	Green	Green	Green	Green	Green	Green	Green	Green	Green	Green	Green	Green	Green	Green	Green	Green	Green	Green	Green	Green
44	1	A	Green	Green	Green	Green	Green	Green	Green	Green	Green	Green	Green	Green	Green	Green	Green	Green	Green	Green	Green	Green	Green
		B	Red	Red	Red	Red	Red	Red	Red	Red	Red	Red	Red	Red	Red	Red	Red	Red	Red	Red	Red	Red	Red
		C	Green	Green	Green	Green	Green	Green	Green	Green	Green	Green	Green	Green	Green	Green	Green	Green	Green	Green	Green	Green	Green
	2	A	Green	Green	Green	Green	Green	Green	Green	Green	Green	Green	Green	Green	Green	Green	Green	Green	Green	Green	Green	Green	Green
		B	Red	Red	Red	Red	Red	Red	Red	Red	Red	Red	Red	Red	Red	Red	Red	Red	Red	Red	Red	Red	Red
		C	Green	Green	Green	Green	Green	Green	Green	Green	Green	Green	Green	Green	Green	Green	Green	Green	Green	Green	Green	Green	Green
46	1	A	Green	Green	Green	Green	Green	Green	Green	Green	Green	Green	Green	Green	Green	Green	Green	Green	Green	Green	Green	Green	Green
		B	Red	Red	Red	Red	Red	Red	Red	Red	Red	Red	Red	Red	Red	Red	Red	Red	Red	Red	Red	Red	Red
		C	Green	Green	Green	Green	Green	Green	Green	Green	Green	Green	Green	Green	Green	Green	Green	Green	Green	Green	Green	Green	Green
	2	A	Green	Green	Green	Green	Green	Green	Green	Green	Green	Green	Green	Green	Green	Green	Green	Green	Green	Green	Green	Green	Green
		B	Red	Red	Red	Red	Red	Red	Red	Red	Red	Red	Red	Red	Red	Red	Red	Red	Red	Red	Red	Red	Red
		C	Green	Green	Green	Green	Green	Green	Green	Green	Green	Green	Green	Green	Green	Green	Green	Green	Green	Green	Green	Green	Green
48	1	A	Green	Green	Green	Green	Green	Green	Green	Green	Green	Green	Green	Green	Green	Green	Green	Green	Green	Green	Green	Green	Green
		B	Red	Red	Red	Red	Red	Red	Red	Red	Red	Red	Red	Red	Red	Red	Red	Red	Red	Red	Red	Red	Red
		C	Green	Green	Green	Green	Green	Green	Green	Green	Green	Green	Green	Green	Green	Green	Green	Green	Green	Green	Green	Green	Green
	2	A	Green	Green	Green	Green	Green	Green	Green	Green	Green	Green	Green	Green	Green	Green	Green	Green	Green	Green	Green	Green	Green
		B	Red	Red	Red	Red	Red	Red	Red	Red	Red	Red	Red	Red	Red	Red	Red	Red	Red	Red	Red	Red	Red
		C	Green	Green	Green	Green	Green	Green	Green	Green	Green	Green	Green	Green	Green	Green	Green	Green	Green	Green	Green	Green	Green

- Combination possible
- Combination not possible
- A without tilt
- B with seat lift and tilt
- C with tilt

**Power wheelchair Juvo B6.**

**Continuation verview possible combinations centrally mounted leg support - VAS**

SD [cm]	Chassis size	Equipment	SH [cm]		43		45			47			49			51			53		55		57	
			FW	RW	FW	MW	RW	FW	MW	RW	FW	MW	RW	FW	MW	RW	FW	MW	RW	MW	RW	MW	RW	MW
50	1	A	Green	Green	Green	Green	Green	Green	Green	Green	Green	Green	Green	Green	Green	Green	Green	Green	Green	Green	Green	Green	Green	Green
		B	Red	Red	Red	Red	Red	Red	Red	Red	Red	Red	Red	Red	Red	Red	Red	Red	Red	Red	Red	Red	Red	Red
		C	Green	Green	Green	Green	Green	Green	Green	Green	Green	Green	Green	Green	Green	Green	Green	Green	Green	Green	Green	Green	Green	Green
	2	A	Green	Green	Green	Green	Green	Green	Green	Green	Green	Green	Green	Green	Green	Green	Green	Green	Green	Green	Green	Green	Green	Green
		B	Red	Red	Red	Red	Red	Red	Red	Red	Red	Red	Red	Red	Red	Red	Red	Red	Red	Red	Red	Red	Red	Red
		C	Green	Green	Green	Green	Green	Green	Green	Green	Green	Green	Green	Green	Green	Green	Green	Green	Green	Green	Green	Green	Green	Green
52	1	A	Green	Green	Green	Green	Green	Green	Green	Green	Green	Green	Green	Green	Green	Green	Green	Green	Green	Green	Green	Green	Green	
		B	Red	Red	Red	Red	Red	Red	Red	Red	Red	Red	Red	Red	Red	Red	Red	Red	Red	Red	Red	Red	Red	
		C	Green	Green	Green	Green	Green	Green	Green	Green	Green	Green	Green	Green	Green	Green	Green	Green	Green	Green	Green	Green	Green	
	2	A	Green	Green	Green	Green	Green	Green	Green	Green	Green	Green	Green	Green	Green	Green	Green	Green	Green	Green	Green	Green	Green	Green
		B	Red	Red	Red	Red	Red	Red	Red	Red	Red	Red	Red	Red	Red	Red	Red	Red	Red	Red	Red	Red	Red	Red
		C	Green	Green	Green	Green	Green	Green	Green	Green	Green	Green	Green	Green	Green	Green	Green	Green	Green	Green	Green	Green	Green	Green
54	1	A	Green	Green	Green	Green	Green	Green	Green	Green	Green	Green	Green	Green	Green	Green	Green	Green	Green	Green	Green	Green	Green	
		B	Red	Red	Red	Red	Red	Red	Red	Red	Red	Red	Red	Red	Red	Red	Red	Red	Red	Red	Red	Red	Red	
		C	Green	Green	Green	Green	Green	Green	Green	Green	Green	Green	Green	Green	Green	Green	Green	Green	Green	Green	Green	Green	Green	
	2	A	Green	Green	Green	Green	Green	Green	Green	Green	Green	Green	Green	Green	Green	Green	Green	Green	Green	Green	Green	Green	Green	Green
		B	Red	Red	Red	Red	Red	Red	Red	Red	Red	Red	Red	Red	Red	Red	Red	Red	Red	Red	Red	Red	Red	Red
		C	Green	Green	Green	Green	Green	Green	Green	Green	Green	Green	Green	Green	Green	Green	Green	Green	Green	Green	Green	Green	Green	Green
56	1	A	Green	Green	Green	Green	Green	Green	Green	Green	Green	Green	Green	Green	Green	Green	Green	Green	Green	Green	Green	Green	Green	
		B	Red	Red	Red	Red	Red	Red	Red	Red	Red	Red	Red	Red	Red	Red	Red	Red	Red	Red	Red	Red	Red	
		C	Green	Green	Green	Green	Green	Green	Green	Green	Green	Green	Green	Green	Green	Green	Green	Green	Green	Green	Green	Green	Green	
	2	A	Green	Green	Green	Green	Green	Green	Green	Green	Green	Green	Green	Green	Green	Green	Green	Green	Green	Green	Green	Green	Green	Green
		B	Red	Red	Red	Red	Red	Red	Red	Red	Red	Red	Red	Red	Red	Red	Red	Red	Red	Red	Red	Red	Red	Red
		C	Green	Green	Green	Green	Green	Green	Green	Green	Green	Green	Green	Green	Green	Green	Green	Green	Green	Green	Green	Green	Green	Green
58	1	A	Green	Green	Green	Green	Green	Green	Green	Green	Green	Green	Green	Green	Green	Green	Green	Green	Green	Green	Green	Green	Green	
		B	Red	Red	Red	Red	Red	Red	Red	Red	Red	Red	Red	Red	Red	Red	Red	Red	Red	Red	Red	Red	Red	
		C	Green	Green	Green	Green	Green	Green	Green	Green	Green	Green	Green	Green	Green	Green	Green	Green	Green	Green	Green	Green	Green	
	2	A	Green	Green	Green	Green	Green	Green	Green	Green	Green	Green	Green	Green	Green	Green	Green	Green	Green	Green	Green	Green	Green	Green
		B	Red	Red	Red	Red	Red	Red	Red	Red	Red	Red	Red	Red	Red	Red	Red	Red	Red	Red	Red	Red	Red	Red
		C	Green	Green	Green	Green	Green	Green	Green	Green	Green	Green	Green	Green	Green	Green	Green	Green	Green	Green	Green	Green	Green	Green

Combination possible  
 Combination not possible

- A without tilt
- B with seat lift and tilt
- C with tilt

© Ottobock - 647F566=en MASTER-14-2401 - Technical modifications and printing errors reserved - November 2024 - V1

**Power wheelchair *Juvo B6*.**

**Seat cushion Livo**

SD [cm]	Seat width [cm]											
	34	36	38	40	42	44	46	48	50	52	54	56
34												
36												
38				○								
40			○		○							
42				○	○	○	○	○		○		
44					○	○	○	○	○	○		
46					○	○	○	○	○	○		
48					○	○	○					
50						○	○					
52					○	○	○				○	
54												
56												
58												



**Power wheelchair *Juvo B6*.**

**Seat cushion Evoflair**

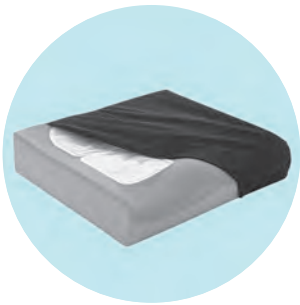
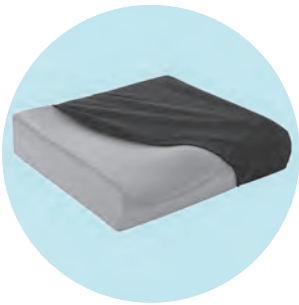
SD [cm]	Seat width [cm]											
	34	36	38	40	42	44	46	48	50	52	54	56
34												
36												
38												
40			○	○	○							
42				○	○		○	○	○			
44					○		○	○		○		
46					○		○	○		○		
48												
50												
52					○		○			○		
54												
56												
58												



**Power wheelchair *Juvo B6*.**

**Seat cushion Terra, Terra Aquos**

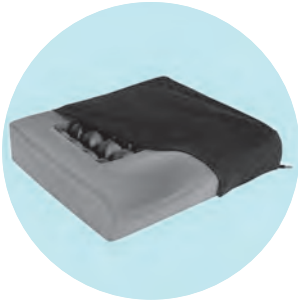
SD [cm]	Seat width [cm]											
	34	36	38	40	42	44	46	48	50	52	54	56
34		○										
36		○										
38		○	○	○	○	○	○	○	○	○		
40				○	○	○	○					
42				○	○	○	○					
44				○	○	○	○	○	○	○		
46				○	○	○	○	○	○	○		
48				○	○	○	○	○	○	○		
50												
52												
54												
56												
58												



**Power wheelchair *Juvo B6*.**

**Seat cushion Terra Flair**

SD [cm]	Seat width [cm]											
	34	36	38	40	42	44	46	48	50	52	54	56
34												
36												
38			○	○	○	○	○	○	○	○		
40				○	○	○	○					
42				○	○	○	○					
44				○	○	○	○	○	○	○		
46				○	○	○	○	○	○	○		
48				○	○	○	○	○	○	○		
50												
52												
54												
56												
58												



**Power wheelchair *Juvo B6*.**

**Seat cushion Cloud**

SD [cm]	Seat width [cm]											
	34	36	38	40	42	44	46	48	50	52	54	56
34	○	○										
36	○	○	○									
38	○	○	○	○	○		○					
40	○	○	○	○	○	○	○					
42			○	○	○	○	○	○	○	○	○	
44				○	○	○	○	○	○	○	○	
46				○	○	○	○	○	○	○	○	
48				○	○	○	○	○	○	○	○	
50							○	○				
52							○	○				
54												
56												
58												



**Power wheelchair Juvo B6.**

**Seat cushion with flat contour and with deep contour**

SD [cm]	Seat width [cm]								
	38	40	42	44	46	48	50	52	54
38	○	○							
40	○	○							
42	○	○	○	○	○	○	○	○	○
44	○	○	○	○	○	○	○	○	○
46	○	○	○	○	○	○	○	○	○
48			○	○	○	○	○	○	○
50			○	○	○	○	○	○	○
52			○	○	○	○	○	○	○
54			○	○	○	○	○	○	○
56			○	○	○	○	○	○	○
58									

○ : possible dimension in combination with VAS



## Power wheelchair *Juvo B6*.

### Notices and exclusions

- 2.1) Not possible in conjunction with Australia, Canada or the United States of America as the country of destination
- 4.1) Possible only in combination with maximum user weight <= 140 kg
- 4.2) Not possible in conjunction with the combination of Australia, Canada or the United States of America as the country of destination and drive type Mid Wheel Drive (MWD)
- 5.1) Possible only in combination with maximum user weight <= 160 kg
- 5.2) Possible only in combination with maximum user weight <= 100 kg
- 6.0) Possible only in combination with modular Recaro seating system
- 6.1) Mandatory information in combination with modular Recaro seating system
- 8.0) Possible only in combination with standard seat, VAS (Vario Adjust Seat) or Recaro n-Joy-Plus
- 8.1) Mandatory information in combination with standard seat, VAS (Vario Adjust Seat) or Recaro n-Joy-Plus
- 8.2) See table "seat depth" (490E75=0-Sitztiefe)
- 8.3) Not possible in conjunction with the combination of maximum user weight > 75 kg and drive type Mid Wheel Drive (MWD)
- 8.4) Not possible in conjunction with the combination of maximum user weight > 100 kg, chassis, size 1 and standard seat, small or VAS (Vario Adjust Seat)
- 8.5) Not possible in conjunction with the combination of maximum user weight > 100 kg, drive type Rear Wheel Drive (RWD) and VAS (Vario Adjust Seat)
- 8.6) Not possible in conjunction with the combination of maximum user weight > 100 kg, drive type Rear Wheel Drive (RWD), chassis, size 1 and VAS (Vario Adjust Seat)
- 8.7) Not possible in conjunction with the combination of maximum user weight > 100 kg, drive type Rear Wheel Drive (RWD), chassis, size 2 and VAS (Vario Adjust Seat)
- 8.8) Not possible in conjunction with the combination of maximum user weight > 100 kg, drive type Mid Wheel Drive (MWD), chassis, size 2 and standard seat, small or VAS (Vario Adjust Seat)
- 8.9) Not possible in conjunction with the combination of maximum user weight > 140 kg, drive type Mid Wheel Drive (MWD) and VAS (Vario Adjust Seat)
- 8.10) Not possible in conjunction with the combination of maximum user weight > 140 kg, drive type Rear Wheel Drive (RWD) and VAS (Vario Adjust Seat)
- 8.11) Not possible in conjunction with the combination of maximum user weight > 140 kg, drive type Front Wheel Drive (FWD) and VAS (Vario Adjust Seat)
- 8.12) Not possible in conjunction with the combination of maximum user weight > 160 kg and drive type Front Wheel Drive (FWD)
- 8.13) Not possible in conjunction with the combination of maximum user weight > 160 kg and drive type Mid Wheel Drive (MWD)
- 8.14) Not possible in conjunction with the combination of maximum user weight > 180 kg and drive type Mid Wheel Drive (MWD)
- 8.15) Not possible in conjunction with the combination of maximum user weight > 180 kg and drive type Front Wheel Drive (FWD)
- 8.16) Not possible in conjunction with the combination of maximum user weight > 140 kg, drive type Rear Wheel Drive (RWD) or Mid Wheel Drive (MWD) and standard seat, large or standard seat, XL
- 9.0) Possible only in combination with standard seat or VAS (Vario Adjust Seat)
- 9.1) Mandatory information in combination with standard seat or VAS (Vario Adjust Seat)
- 9.2) See table "seat width" (490E75=0-Sitzbreite)
- 10.1) Cannot be combined with Recaro n-Joy, Recaro n-Joy-Plus or modular Recaro seating system
- 10.2) Not possible in conjunction with the combination of drive type Front Wheel Drive (FWD) and Recaro n-Joy, Recaro n-Joy-Plus or modular Recaro seating system
- 10.3) Cannot be combined with standard seat or VAS (Vario Adjust Seat)
- 10.4) Not possible in conjunction with the combination of maximum user weight > 70 kg and Recaro n-Joy, Recaro n-Joy-Plus or modular Recaro seating system
- 10.5) Not possible in conjunction with the combination of maximum user weight > 70 kg and standard seat
- 10.6) Not possible in conjunction with the combination of maximum user weight > 70 kg and VAS (Vario Adjust Seat)
- 10.7) Not possible in conjunction with the combination of maximum user weight > 70 kg, drive type Rear Wheel Drive (RWD) or Mid Wheel Drive (MWD) and VAS (Vario Adjust Seat)
- 10.8) Not possible in conjunction with the combination of maximum user weight > 70 kg, VAS (Vario Adjust Seat) and seat depth <= 46 cm
- 11.1) Possible only in combination with maximum user weight <= 150 kg
- 11.2) See table "seat cushion Terra, Terra Aquos" (490E75=0-Terra\_T-Aquos)
- 11.3) See table "seat cushion Terra-Flair" (490E75=0-Terra-Flair)
- 11.4) See table "seat cushion Livo" (490E75=0-Livo)
- 11.5) See table "seat cushion Cloud" (490E75=0-Cloud)
- 11.6) Possible only in combination with maximum user weight <= 125 kg
- 11.7) See table "seat cushion Evoflair" (490E75=0-Evoflair)
- 11.8) Cannot be combined with standard seat, Junior
- 11.10) Not possible in conjunction with the combination of VAS (Vario Adjust Seat), seat width 38 cm or 40 cm and seat depth > 46 cm, see table "seat cushion with flat contours, with deep contours" (490E75=0-konturiert)
- 11.11) Not possible in conjunction with the combination of VAS (Vario Adjust Seat), seat width > 40 cm and seat depth 38 cm or 40 cm, see table "seat cushion with flat contours, with deep contours" (490E75=0-konturiert)
- 11.12) Not possible in conjunction with the combination of VAS (Vario Adjust Seat) and seat depth 58 cm, see table "seat cushion with flat contours, with deep contours" (490E75=0-konturiert)
- 12.0) Possible only in combination with seat cushion with flat or deep contours
- 12.1) Mandatory information in combination with seat cushion with flat or deep contours
- 13.1) Possible only in combination with maximum user weight <= 113 kg
- 13.2) Possible only in combination with VAS (Vario Adjust Seat)
- 13.3) Cannot be combined with seat width 54 cm
- 14.0) Possible only in combination with back version back cushion with flat or deep contours
- 14.1) Mandatory information in combination with back version back cushion with flat or deep contours
- 15.1) Possible only in combination with back version back cushion with deep contours
- 16.0) Possible only in combination with back version ADI aluminium flat top back
- 16.1) Mandatory information in combination with back version ADI aluminium flat top back
- 19.1) Cannot be combined with drive type Front Wheel Drive (FWD)
- 19.2) Not possible in conjunction with the combination of drive type Rear Wheel Drive (RWD) and VAS (Vario Adjust Seat)
- 19.3) Cannot be combined with drive type Mid Wheel Drive (MWD)



- 20.0) Possible only with seat inclination 0°
- 20.11) Not possible in conjunction with the combination of maximum user weight > 100 kg, drive type Mid Wheel Drive (MWD), chassis, size 1, standard seat, small and seat depth 40 cm
- 20.12) Not possible in conjunction with the combination of maximum user weight > 100 kg, drive type Rear Wheel Drive (RWD), chassis, size 1, standard seat, large or standard seat, XL and seat depth 42 cm
- 20.13) Not possible in conjunction with the combination of maximum user weight > 100 kg, drive type Mid Wheel Drive (MWD), chassis, size 1, standard seat, XL and seat depth 42 cm
- 20.14) Cannot be combined with lower leg length  $\geq$  45 cm
- 20.15) Not possible in conjunction with the combination of maximum user weight > 75 kg, drive type Front Wheel Drive (FWD) and seat depth 34 cm
- 20.16) Not possible in conjunction with the combination of maximum user weight > 100 kg, drive type Front Wheel Drive (FWD), chassis, size 2, standard seat, small or VAS (Vario Adjust Seat) and seat depth 38 cm
- 20.17) Not possible in conjunction with the combination of maximum user weight > 100 kg, drive type Front Wheel Drive (FWD), standard seat, small and seat depth 40 cm
- 20.18) Not possible in conjunction with the combination of maximum user weight > 100 kg, drive type Mid Wheel Drive (MWD), chassis, size 1, VAS (Vario Adjust Seat) and seat depth 40 cm
- 20.19) Not possible in conjunction with the combination of maximum user weight > 100 kg, drive type Front Wheel Drive (FWD), chassis, size 1, standard seat, large or standard seat, XL and seat depth 42 cm
- 20.20) Not possible in conjunction with the combination of maximum user weight > 140 kg, drive type Front Wheel Drive (FWD), VAS (Vario Adjust Seat) and seat depth 42 cm
- 20.21) Not possible in conjunction with the combination of maximum user weight > 100 kg, drive type Rear Wheel Drive (RWD), chassis, size 1, VAS (Vario Adjust Seat) and seat depth 44 cm
- 20.22) Not possible in conjunction with the combination of maximum user weight  $\leq$  75 kg, drive type Mid Wheel Drive (MWD), chassis, size 2, standard seat, small and seat depth 46 cm
- 20.23) Not possible in conjunction with the combination of maximum user weight  $\leq$  100 kg, drive type Mid Wheel Drive (MWD), chassis, size 2, standard seat, XL and seat depth 50 cm
- 20.24) Not possible in conjunction with the combination of France as the country of destination, drive type Rear Wheel Drive (RWD), maximum user weight  $\geq$  150 kg and lower leg length  $\geq$  49 cm
- 20.25) Not possible in conjunction with the combination of maximum user weight > 100 kg and chassis, size 1
- 20.26) Not possible in conjunction with the combination of maximum user weight > 160 kg, drive type Front Wheel Drive (FWD) and seat depth 50 cm
- 20.27) Not possible in conjunction with the combination of maximum user weight > 160 kg, drive type Mid Wheel Drive (MWD) and seat depth 44 cm
- 20.28) Not possible in conjunction with the combination of maximum user weight > 180 kg, drive type Mid Wheel Drive (MWD) and seat depth 46 cm or 48 cm
- 20.29) Not possible in conjunction with the combination of maximum user weight > 70 kg, VAS (Vario Adjust Seat) and lower leg length 23 cm
- 20.30) Not possible in conjunction with the combination of maximum user weight > 140 kg, drive type Rear Wheel Drive (RWD), standard seat, large or standard seat, XL and seat depth 44 cm
- 20.31) Not possible in conjunction with the combination of maximum user weight > 140 kg, drive type Front Wheel Drive (FWD), standard seat, large or standard seat, XL and seat depth 42 cm
- 20.32) Not possible in conjunction with the combination of maximum user weight > 140 kg, drive type Mid Wheel Drive (MWD), standard seat, large and seat depth 44 cm
- 21.0) Seat height  $\geq$  lower leg length + 3 cm
- 21.1) Cannot be combined with VAS (Vario Adjust Seat), Recaro n-Joy, Recaro n-Joy-Plus or modular Recaro seating system
- 21.2) Not possible in conjunction with the combination of drive type Front Wheel Drive (FWD), chassis, size 1 and standard seat, large
- 21.3) Not possible in conjunction with the combination of drive type Front Wheel Drive (FWD) and standard seat, XL
- 21.4) Not possible in conjunction with the combination of drive type Rear Wheel Drive (RWD) and standard seat
- 21.5) Cannot be combined with electric seat adjustment seat tilt 45°
- 21.6) Not possible in conjunction with the combination of electric seat adjustment seat height adjustment up to 35 cm or seat height adjustment up to 35 cm with seat tilt 45°
- 21.7) Not possible in conjunction with the combination of drive type Rear Wheel Drive (RWD), standard seat, large or standard seat, XL and seat inclination -3°
- 21.8) Not possible in conjunction with the combination of standard seat and unselected electric seat adjustment seat tilt 45°
- 21.9) Not possible in conjunction with the combination of drive type Mid Wheel Drive (MWD) and standard seat, large or standard seat, XL
- 21.10) Not possible in conjunction with the combination of drive type Mid Wheel Drive (MWD), standard seat, Junior or standard seat, small
- 21.11) Not possible in conjunction with the combination of drive type Mid Wheel Drive (MWD) and Recaro n-Joy, Recaro n-Joy-Plus or modular Recaro seating system
- 21.12) Not possible in conjunction with the combination of France as the country of destination, drive type Rear Wheel Drive (RWD), maximum user weight  $\geq$  150 kg and electric seat adjustment seat tilt 45°
- 21.13) Cannot be combined with seat inclination -3°
- 21.14) Not possible in conjunction with the combination of maximum user weight > 70 kg, chassis, size 1, VAS (Vario Adjust Seat), seat depth 50 cm and lower leg length 23 cm
- 21.15) Not possible in conjunction with the combination of maximum user weight > 70 kg, chassis, size 2, VAS (Vario Adjust Seat), seat depth 48 cm and lower leg length 23 cm
- 21.16) Not possible in conjunction with the combination of maximum user weight > 70 kg, chassis, size 2, VAS (Vario Adjust Seat), seat depth 50 cm or 52 cm or 54 cm and lower leg length 23 cm
- 21.17) Not possible in conjunction with the combination of maximum user weight > 70 kg, chassis, size 1, VAS (Vario Adjust Seat), seat depth 48 cm and lower leg length 23 cm
- 22.1) Cannot be combined with Recaro n-Joy or Recaro n-Joy Plus
- 24.0) Possible only in combination with head/neck support mounting kit
- 24.1) Mandatory information in combination with head/neck support mounting kit
- 24.2) Possible only in combination with head/neck support mounting kit, Goose Neck or Multi-axis, offset or Multi-axis, straight
- 25.0) Mandatory information in combination with product classification category B (In-/Outdoor)
- 25.1) Possible only in combination with Recaro n-Joy or Recaro n-Joy-Plus or modular Recaro seating system
- 25.2) Not possible in conjunction with the combination of standard seat, small, seat depth < 42 cm and seat width > 38 cm

## Power wheelchair *Juvo B6*.

- 28.1) Possible only in combination with selected lower leg length
- 28.2) Not possible in conjunction with the combination of standard seat or VAS (Vario Adjust Seat) and lower leg length < 21 cm
- 28.3) Not possible in conjunction with the combination of maximum user weight > 70 kg, standard seat and lower leg length < 28 cm
- 28.4) Not possible in conjunction with the combination of maximum user weight > 70 kg, VAS (Vario Adjust Seat) and lower leg length < 27 cm
- 28.5) Not possible in conjunction with the combination of maximum user weight > 70 kg, Recaro n-Joy, Recaro n-Joy-Plus or modular Recaro seating system and lower leg length < 21 cm
- 28.6) Not possible in conjunction with the combination of drive type Rear Wheel Drive (RWD), chassis, size 2, standard seat, small and seat height 43 cm
- 28.7) Not possible in conjunction with the combination of drive type Rear Wheel Drive (RWD), chassis, size 2, standard seat, small, seat inclination -3° and seat height 43 cm
- 28.8) Not possible in conjunction with selected lower leg length
- 28.9) Not possible in conjunction with the combination of drive type Front Wheel Drive (FWD), standard seat, Junior or standard seat, small and electric seat adjustment, without
- 28.10) Not possible in conjunction with the combination of drive type Front Wheel Drive (FWD), standard seat, large or standard seat, XL, seat depth <= 46 cm and electric seat adjustment, without
- 28.11) Not possible in conjunction with the combination of drive type Front Wheel Drive (FWD), chassis, size 2, standard seat, large or standard seat, XL, seat depth >= 48 cm, seat height 43 cm and electric seat adjustment, without
- 28.12) Not possible in conjunction with the combination of drive type Front Wheel Drive (FWD), chassis, size 2, standard seat, large, seat depth 42 cm and electric seat adjustment seat height adjustment up to 35 cm or seat height adjustment up to 35 cm with seat tilt 45°
- 28.13) Not possible in conjunction with the combination of drive type Front Wheel Drive (FWD), chassis, size 2, standard seat, large, seat depth 42 cm, seat height 47 cm or 49 cm and electric seat adjustment seat tilt 45°
- 28.14) Not possible in conjunction with the combination of drive type Front Wheel Drive (FWD), standard seat and lower leg length < 28 cm
- 28.15) Not possible in conjunction with the combination of drive type Front Wheel Drive (FWD), VAS (Vario Adjust Seat), seat depth <= 46 cm and electric seat adjustment, without
- 28.16) Not possible in conjunction with the combination of drive type Front Wheel Drive (FWD), chassis, size 1, VAS (Vario Adjust Seat), seat depth 48 cm, seat height <= 47 cm and electric seat adjustment, without
- 28.17) Not possible in conjunction with the combination of drive type Front Wheel Drive (FWD), chassis, size 1, VAS (Vario Adjust Seat), seat depth 50 cm, seat height 43 cm and electric seat adjustment, without
- 28.18) Not possible in conjunction with the combination of drive type Front Wheel Drive (FWD), chassis, size 2, VAS (Vario Adjust Seat), seat depth 48 cm, seat height <= 49 cm and electric seat adjustment, without
- 28.19) Not possible in conjunction with the combination of drive type Front Wheel Drive (FWD), chassis, size 2, VAS (Vario Adjust Seat), seat depth 50 cm or 52 cm or 54 cm, seat height <= 45 cm and electric seat adjustment, without
- 28.20) Not possible in conjunction with the combination of drive type Front Wheel Drive (FWD), VAS (Vario Adjust Seat), Recaro n-Joy, Recaro n-Joy-Plus or modular Recaro seating system, lower leg length < 28 cm or > 43 cm and electric seat adjustment, without
- 28.21) Not possible in conjunction with the combination of drive type Front Wheel Drive (FWD), VAS (Vario Adjust Seat), Recaro n-Joy, Recaro n-Joy-Plus or modular Recaro seating system, lower leg length < 28 cm and electric seat adjustment seat tilt 45°, seat height adjustment up to 35 cm or seat height adjustment up to 35 cm with seat tilt 45°
- 28.22) Not possible in conjunction with the combination of drive type Rear Wheel Drive (RWD), chassis, size 1, standard seat, Junior or standard seat, small, seat height <= 51 cm and electric seat adjustment, without
- 28.23) Not possible in conjunction with the combination of drive type Rear Wheel Drive (RWD), chassis, size 1, standard seat, Junior or standard seat, small, seat depth <= 40 cm, seat height 53 cm or 55 cm and electric seat adjustment, without
- 28.24) Not possible in conjunction with the combination of drive type Rear Wheel Drive (RWD), chassis, size 1, standard seat, Junior, seat depth 34 cm or 36 cm, seat height 49 cm or 51 cm or 53 cm and electric seat adjustment seat tilt 45°
- 28.25) Not possible in conjunction with the combination of drive type Rear Wheel Drive (RWD), chassis, size 2, standard seat, Junior or standard seat, small or standard seat, XL and electric seat adjustment, without
- 28.26) Not possible in conjunction with the combination of drive type Rear Wheel Drive (RWD), chassis, size 2, standard seat, Junior and electric seat adjustment seat height adjustment up to 35 cm or seat height adjustment up to 35 cm with seat tilt 45°
- 28.27) Not possible in conjunction with the combination of drive type Rear Wheel Drive (RWD), chassis, size 2, standard seat, small, seat depth <= 42 cm and electric seat adjustment seat height adjustment up to 35 cm or seat height adjustment up to 35 cm with seat tilt 45°
- 28.28) Not possible in conjunction with the combination of drive type Rear Wheel Drive (RWD), chassis, size 2, standard seat, Junior, seat height 47 cm and electric seat adjustment seat tilt 45°
- 28.29) Not possible in conjunction with the combination of drive type Rear Wheel Drive (RWD), chassis, size 2, standard seat, small, seat depth <= 42 cm, seat height 47 cm and electric seat adjustment seat tilt 45°
- 28.30) Not possible in conjunction with the combination of drive type Rear Wheel Drive (RWD), standard seat, lower leg length < 28 cm or > 48 cm and electric seat adjustment, without
- 28.31) Not possible in conjunction with the combination of drive type Rear Wheel Drive (RWD), standard seat, lower leg length < 28 cm and electric seat adjustment seat height adjustment up to 35 cm or seat height adjustment up to 35 cm with seat tilt 45°
- 28.32) Not possible in conjunction with the combination of drive type Rear Wheel Drive (RWD), standard seat, lower leg length < 28 cm or > 49 cm and electric seat adjustment seat tilt 45°
- 28.33) Not possible in conjunction with the combination of drive type Rear Wheel Drive (RWD), chassis, size 1, VAS (Vario Adjust Seat), seat depth <= 42 cm, seat height 43 cm and electric seat adjustment, without
- 28.34) Not possible in conjunction with the combination of drive type Rear Wheel Drive (RWD), chassis, size 2, VAS (Vario Adjust Seat), seat depth <= 40 cm, seat height 43 cm and electric seat adjustment, without
- 28.35) Not possible in conjunction with the combination of drive type Rear Wheel Drive (RWD), VAS (Vario Adjust Seat), Recaro n-Joy, Recaro n-Joy-Plus or modular Recaro seating system, lower leg length < 28 cm or > 49 cm and electric seat adjustment, without
- 28.36) Not possible in conjunction with the combination of drive type Rear Wheel Drive (RWD), VAS (Vario Adjust Seat), Recaro n-Joy, Recaro n-Joy-Plus or modular Recaro seating system, lower leg length < 28 cm and electric seat adjustment seat height adjustment up to 35 cm or seat height adjustment up to 35 cm with seat tilt 45°
- 28.37) Not possible in conjunction with the combination of drive type Rear Wheel Drive (RWD), VAS (Vario Adjust Seat), Recaro n-Joy, Recaro n-Joy-Plus or modular Recaro seating system, lower leg length < 28 cm or > 48 cm and electric seat adjustment seat tilt 45°
- 28.38) Not possible in conjunction with the combination of drive type Mid Wheel Drive (MWD), standard seat, Junior or standard seat, small, seat height 41 cm or 43 cm and electric seat adjustment, without
- 28.39) Not possible in conjunction with the combination of drive type Mid Wheel Drive (MWD), standard seat, lower leg length < 28 cm or > 48 cm and electric seat adjustment, without

## Power wheelchair *Juvo B6*.

- 28.40) Not possible in conjunction with the combination of drive type Mid Wheel Drive (MWD), standard seat, lower leg length < 27 cm or > 40 cm and electric seat adjustment seat height adjustment up to 35 cm or seat height adjustment up to 35 cm with seat tilt 45°
- 28.41) Not possible in conjunction with the combination of drive type Mid Wheel Drive (MWD), standard seat, lower leg length < 27 cm or > 48 cm and electric seat adjustment seat tilt 45°
- 28.42) Not possible in conjunction with the combination of drive type Mid Wheel Drive (MWD), VAS (Vario Adjust Seat), Recaro n-Joy, Recaro n-Joy-Plus or modular Recaro seating system, seat height 43 cm and electric seat adjustment, without
- 28.43) Not possible in conjunction with the combination of drive type Mid Wheel Drive (MWD), VAS (Vario Adjust Seat), Recaro n-Joy, Recaro n-Joy-Plus or modular Recaro seating system, lower leg length < 28 cm or > 49 cm and electric seat adjustment set tilt 45° or without
- 28.44) Not possible in conjunction with the combination of drive type Mid Wheel Drive (MWD), VAS (Vario Adjust Seat), Recaro n-Joy, Recaro n-Joy-Plus or modular Recaro seating system, lower leg length < 28 cm or > 41 cm and electric seat adjustment seat height adjustment up to 35 cm or seat height adjustment up to 35 cm with seat tilt 45°
- 28.45) Not possible in conjunction with the combination of VAS (Vario Adjust Seat), seat depth 38 cm and arm support, flip-up
- 28.46) Not possible in conjunction with the combination of VAS (Vario Adjust Seat) and seat width 38 cm
- 28.47) Not possible in conjunction with the combination of drive type Rear Wheel Drive (RWD), chassis, size 1, standard seat, Junior, seat depth 34 cm and electric seat adjustment seat height adjustment up to 35 cm or seat height adjustment up to 35 cm with seat tilt 45°
- 28.48) Not possible in conjunction with the combination of drive type Mid Wheel Drive (MWD), chassis, size 1, standard seat, small, seat depth 42 cm, seat height 45 cm and electric seat adjustment, without
- 28.49) Not possible in conjunction with the combination of drive type Rear Wheel Drive (RWD), chassis, size 2, standard seat, large, seat depth 44 cm, lower leg length 28 cm and seat height 43 cm
- 29.0) Cannot be combined with leg support version, without leg support or centre mounted
- 29.1) Mandatory information in combination with leg support version, standard, mechanically elevating or electrically elevating
- 29.2) Not possible in conjunction with the combination of standard seat and lower leg length < 25 cm
- 29.3) Not possible in conjunction with the combination of VAS (Vario Adjust Seat) and lower leg length < 24 cm
- 29.4) Not possible in conjunction with the combination of Recaro n-Joy, Recaro n-Joy-Plus or modular Recaro seating system and lower leg length < 18 cm
- 29.6) Cannot be combined with leg support version, mechanically elevating or electrically elevating
- 29.10) Cannot be combined with leg support version, mechanically elevating or electrically elevating, separate controllable
- 29.11) Not possible in conjunction with the combination of maximum user weight > 140 kg and leg support version, electrically elevating, simultaneously controllable
- 30.1) Possible only in combination with leg support version, mechanically or electrically elevating
- 30.2) Possible only in combination with foot plate version single-panel, aluminium foot plate
- 30.3) Not possible in conjunction with the combination of standard seat and lower leg length < 24 cm or VAS (Vario Adjust Seat) and lower leg length < 24 cm or Recaro n-Joy, Recaro n-Joy-Plus or modular Recaro seating system and lower leg length < 17 cm and leg support version standard
- 30.4) Not possible in conjunction with the combination of standard seat and lower leg length < 28 cm or VAS (Vario Adjust Seat) and lower leg length < 27 cm or Recaro n-Joy, Recaro n-Joy-Plus or modular Recaro seating system and lower leg length < 21 cm and leg support version electrically elevating, simultaneously controllable
- 31.1) Possible only in combination with chassis, size 2
- 31.3) Not possible in conjunction with the combination of maximum user weight > 100 kg and electric seat adjustment seat height adjustment up to 35 cm or seat height adjustment up to 35 cm with seat tilt 45°
- 32.1) Possible only in combination with batteries, AGM 56Ah (C5) / 60,4Ah (C20)
- 32.2) Not possible in conjunction with Argentina, Australia, Brazil, Hong Kong, Japan, Canada, Columbia, Mexico, Thailand, United Kingdom or United States of America as the country of destination
- 32.3) Not possible in conjunction with Argentina, Brazil, Canada, Columbia, Mexico or United States of America as the country of destination
- 37.1) Possible only in combination with tyre colour, grey
- 37.2) Not possible in conjunction with the combination of drive type Front Wheel Drive (FWD) or Rear Wheel Drive (RWD) and tyre colour, black
- 39.1) Mandatory information in combination with drive type Front Wheel Drive (FWD) or Mid Wheel Drive (MWD) (derivation)
- 39.2) Not possible in conjunction with the combination of drive type Rear Wheel Drive (RWD), VAS (Vario Adjust Seat) and seat height 43 cm
- 39.3) Not possible in conjunction with the combination of drive type Rear Wheel Drive (RWD), Recaro n-Joy, Recaro n-Joy-Plus or modular Recaro seating system and seat height 43 cm
- 40.1) Possible only in conjunction with the combination of chassis accessories splash guard for rear wheels and splash guard for caster wheels
- 40.2) Possible only in combination with chassis accessories splash guard for caster wheels
- 41.1) Cannot be combined with back version ADI aluminium flat top back
- 41.2) Cannot be combined with leg support version, centre mounted
- 41.3) Cannot be combined with chassis safety accessories curb climbing assist
- 42.1) Cannot be combined with general accessories therapy tray
- 42.2) Cannot be combined with general accessories rearview mirror
- 42.3) Possible only in combination with maximum user weight <= 180 kg
- 43.0) Possible only in combination with general accessories external power supply, mounting side right
- 43.1) Mandatory information in combination with general accessories external power supply, mounting side right
- 44.0) Possible only in combination with general accessories external power supply, mounting side left
- 44.1) Mandatory information in combination with general accessories external power supply, mounting side left
- 44.2) Cannot be combined with socket for external power supply, right, 12V or 24V
- 45.1) Cannot be combined with electric functions
- 45.2) Possible only in combination with total weight <= 260 kg
- 45.3) Possible only in combination with max. 2 electric functions
- 45.4) Possible only in combination with total weight <= 320 kg
- 45.5) Possible only in combination with drive type Rear Wheel Drive (RWD), Mid Wheel Drive (MWD) or in conjunction with the combination of Front Wheel Drive (FWD) and chassis accessories splash guard for caster wheels
- 45.6) Cannot be combined with lighting acc. to German StVZO

## Power wheelchair *Juvo B6*.

- 45.7) Not possible in conjunction with the combination of modular Recaro seating system and back angle adjustment, electric
- 46.0) Possible only in combination with control unit, R-net/TEN° (120A) power module
- 46.1) Mandatory information in conjunction with the combination of standard seat and unselected battery charger, 12A, incl. external charging socket
- 47.0) Possible only in combination with input for R-net/TEN° power module - TEN° hand module, colour selectable
- 47.1) Mandatory information in combination with input for R-net/TEN° power module - TEN° hand module, colour selectable
- 48.0) Possible only in combination with input for R-net/TEN° power module - TEN° hand module, Shimano matte or TEN° hand module, colour selectable or TEN° tray module, electrical flip over
- 49.0) Possible only in combination with control unit, VR2, without electric functions and lighting or VR2, max. 2 electric functions and lighting poss. or input for R-net/TEN° power module - R-net LED hand module or TEN° hand module, Shimano matte or TEN° hand module, colour selectable
- 49.1) Possible only in combination with control unit, VR2
- 49.2) Mandatory information in combination with control unit, VR2, without electric functions and lighting or VR2, max. 2 electric functions and lighting poss. or input for R-net/TEN° power module - R-net LED hand module or TEN° hand module, Shimano matte or TEN° hand module, colour selectable
- 49.3) Cannot be combined with input for R-net/TEN° power module
- 50.0) Possible only in combination with control unit, VR2 or input for R-net/TEN° power module - R-net LED hand module or TEN° hand module, Shimano matte or TEN° hand module, colour selectable or in conjunction with the combination of input for R-net/TEN° power module - TEN° tray module and mounting material tray for tray module - tray with attachment, tray module centrally mounted or tray with attachment, incl. template or only attachment, incl. template
- 50.1) Mandatory information in combination with control unit, VR2 or input for R-net/TEN° power module - R-net LED hand module or TEN° hand module, Shimano matte or TEN° hand module, colour selectable or in conjunction with the combination of input for R-net/TEN° power module - TEN° tray module and mounting material tray for tray module - tray with attachment, tray module centrally mounted or tray with attachment, incl. template or only attachment, incl. template
- 51.1) Cannot be combined with control unit, VR2 with tray module, manual flip over
- 51.2) Cannot be combined with input for R-net/TEN° power module - TEN° tray module, electrical flip over
- 52.0) Mandatory information in combination with unselected input for R-net/TEN° power module
- 52.1) Not possible in conjunction with the combination of standard seat and modules for control unit, R-net/TEN° - Input/Output Module
- 52.2) Not possible in conjunction with the combination of standard seat and modules for control unit, R-net/TEN° - TEN° LCD module
- 52.3) Not possible in conjunction with the combination of unselected input for R-net/TEN° power module and unselected TEN° LCD module
- 53.0) Possible only in combination with modules for control unit, R-net/TEN° - TEN° LCD module
- 53.1) Mandatory information in combination with modules for control unit, R-net/TEN° - TEN° LCD module
- 55.0) Possible only in combination with special input device for TEN° LCD module - button control
- 55.1) Mandatory information in combination with special input device for TEN° LCD module - button control
- 57.0) Cannot be combined with modules for control unit, R-net/TEN° - TEN° LCD module
- 58.0) Possible only in combination with special input device for TEN° LCD module - Micro Joystick, Multi Joystick, All-round Joystick light, All-round Joystick, All-round Heavy Duty Joystick, calibratable mini joystick or special input device - Micro Joystick, Multi Joystick, All-round Joystick light, All-round Joystick, All-round Heavy Duty Joystick
- 58.1) Mandatory information in combination with special input device for TEN° LCD module - Micro Joystick, Multi Joystick, All-round Joystick light, All-round Joystick, All-round Heavy Duty Joystick, calibratable mini joystick or special input device - Micro Joystick, Multi Joystick, All-round Joystick light, All-round Joystick, All-round Heavy Duty Joystick
- 58.2) Cannot be combined with special input device for TEN° LCD module - All-round Heavy Duty Joystick or Special Input Device - All-round Heavy Duty Joystick
- 58.4) Cannot be combined with external buttons - 2 Piko buttons diam. 50 mm or 2 Piko buttons diam. 30 mm
- 58.5) Cannot be combined with special input device for TEN° LCD module - All-round Joystick light, All-round Joystick, All-round Heavy Duty Joystick or special input device - All-round Joystick light, All-round Joystick or All-round Heavy Duty Joystick
- 58.6) Cannot be combined with special input device for TEN° LCD module - All-round Joystick light, All-round Joystick, All-round Heavy Duty Joystick or special input device - Micro Joystick, Multi Joystick, All-round Joystick light, All-round Joystick, All-round Heavy Duty Joystick
- 58.7) Cannot be combined with general accessories hooks for backpack
- 59.0) Mandatory information in conjunction with the combination of  $\geq 1$  electric function and control unit, R-net/TEN° (120A) power module
- 59.1) Mandatory information in conjunction with the combination of lighting acc. to German StVZO and control unit, R-net/TEN° (120A) power module
- 60.1) Possible only in combination with modules for control unit, R-net/TEN° - Input/Output Module
- 60.2) Not possible in conjunction with the combination of standard seat, Junior and modules for control unit, R-net/TEN°
- 61.0) Possible only in combination with control unit accessories attendant control
- 61.1) Mandatory information in combination with control unit accessories attendant control
- 61.2) Not possible in conjunction with the combination of standard seat, Junior and control unit, R-net/TEN° (120A) power module
- 63.0) Mandatory information in conjunction with the combination of all countries of destination except Other countries, Argentina, Australia, Brazil, France, Hong Kong, Japan, Canada, Columbia, Korea, Mexico, Russia, Switzerland, Thailand, United Kingdom or United States of America and product classification category B (In-/Outdoor)
- 63.1) Not possible in conjunction with the combination of Germany as the country of destination and product classification category B (In-/Outdoor)
- 64.0) Mandatory information in conjunction with drive type Front Wheel Drive (FWD)
- 64.2) Not possible in conjunction with the combination of drive type Front Wheel Drive (FWD) and control unit, VR2
- 64.3) Not possible in conjunction with the combination of drive type Front Wheel Drive (FWD) and speed  $> 7,2$  km/h
- 64.5) Possible only in conjunction with Australia, Canada or the United States of America as the country of destination
- 64.6) Cannot be combined with drive type Rear Wheel Drive (RWD)
- 65.1) Cannot be combined with control unit, R-net/TEN° (120A) power module
- 66.1) For Germany as the country of destination, this is possible only in conjunction with the combination of chassis accessories rear warning sign and lighting acc. to German StVZO
- 66.3) Possible only in combination with drive unit High Performance
- 66.4) Cannot be combined with batteries, AGM 56Ah (C5) / 60,4Ah (C20)
- 66.5) Not possible in conjunction with the combination of maximum user weight  $> 100$  kg and batteries, AGM 56Ah (C5) / 60,4Ah (C20)

## Power wheelchair *Juvo B6*.

- 66.6) Cannot be combined with drive unit High Performance
- 67.0) Possible only in conjunction with the combination of Germany as the country of destination and speed > 6 km/h
- 67.1) Mandatory information in conjunction with the combination of Germany as the country of destination and speed > 6 km/h
- 68.0) Not possible in conjunction with Australia as the country of destination
- 69.0) Possible only in combination with additional instructions for use, qualified personnel
- 69.1) Mandatory information in combination with additional instructions for use, qualified personnel
- 70.0) Possible only in combination with additional instructions for use, user
- 70.1) Mandatory information in combination with additional instructions for use, user
- 71.1) Theoretical total weight (without special requests) = sum of the selected characteristic value weights
- 71.2) Cannot be combined with theoretical total weight > 380 kg (the evaluated options exceed the permissible total weight of 380 kg)
- 72.0) Mandatory information in combination with number of button for button control = 3, 4
- 72.1) Possible only in combination with number of button for button control = 3, 4
- 74.0) Mandatory information in combination with number of button for button control = 4
- 74.1) Possible only in combination with number of button for button control = 4
- 75.1) Possible only in combination with battery charger, without
- 77.1) Possible only in combination with back angle adjustment, electric
- 77.2) Cannot be combined with > 5 electric functions
- 77.3) Possible only in combination with electric seat adjustment seat tilt 45° or seat height adjustment up to 35 cm with seat tilt 45°
- 77.4) Possible only in conjunction with the combination of back angle adjustment, electric and electric seat adjustment seat tilt 45° or back angle adjustment, electric and electric seat adjustment seat height adjustment up to 35 cm with seat tilt 45°
- 77.5) Cannot be combined with > 4 electric functions
- 77.6) Cannot be combined with track stabilisation, mechanical incl. ASM
- 79.1) Not possible in conjunction with the combination of standard seat, small and seat width 38 cm or 40 cm
- 79.2) Not possible in conjunction with the combination of standard seat, large and seat width 44 cm or 46 cm
- 79.3) Not possible in conjunction with the combination of standard seat, XL and seat width 50 cm or 52 cm
- 79.4) Cannot be combined with belts lap belt with rewinder, metal buckle
- 80.0) Possible only in combination with input for R-net/TEN° power module - TEN° tray module, electrical flip over
- 80.1) Mandatory information in combination with input for R-net/TEN° power module - TEN° tray module, electrical flip over
- 82.0) Not possible in conjunction with France as the country of destination
- 82.1) Mandatory information in conjunction with the combination of maximum user weight > 160 kg and electric seat adjustment seat tilt 45° or seat height adjustment up to 35 cm with seat tilt 45° except with France as the country of destination
- 83.0) Possible only in combination with head/neck support mounting kit, UniLink, multi-axis
- 84.0) Possible only in combination with special input device for TEN° LCD module - calibratable mini joystick
- 84.1) Mandatory information in combination with special input device for TEN° LCD module - calibratable mini joystick
- 85.1) Possible only in combination with electric seat adjustment seat height adjustment up to 35 cm or seat height adjustment up to 35 cm with seat tilt 45°