



Mackworth Deluxe Hammock Sling Sling Fitting Guide



Mackworth Deluxe Hammock Sling

Table of Contents

Product Overview 3

Deluxe Hammock Sling Generic Design 3

Patient Measuring..... 4

Sling Sizes 4

Material Types 4

Carry Bar Attachment 6

Sling Fitting..... 7

Sling Checks..... 8

Further Information 8

Product Overview

The **sling range** is used by carers and health care professionals to assist in the lifting and transferring of patients whilst also satisfying the professional and home care environments.

The sling is designed to provide a patient handling and moving solution within a healthcare setting. The sling range is designed to support a patient when used in conjunction with a hoist. It has the ability to safely and securely raise an individual up from one location such as a bed, move the individual and then be easily removed or left in location once the patient is in the desired location.

The sling range will be used in conjunction with a hoist (either ceiling track or mobile) and will also interact with the environment eg bed and/or chair. The specific size and type of sling will be selected for each task based on a couple of user and environmental factors:

- Size and weight of the patient
- Other medical conditions of the patient
- The nature of the task to be completed
- If the sling is to be left in situ after the manoeuvre

The sling is the component that provides the fit around the patient and ensures a safe and secure lift. Due to this there needs to be consideration of the weight and size of the patient to ensure a safe manoeuvre. The sling attaches to a hoist through the use of a carry bar. There are two types of connectors – hook and clip. Slings need to be manufactured to the correct specification to meet the need of the carry bar.

Deluxe Hammock Sling Generic Design

It is often the sling of choice in cases where the patient has a degree of body strength and the carer is looking to conduct tasks where access is required – such as toileting.

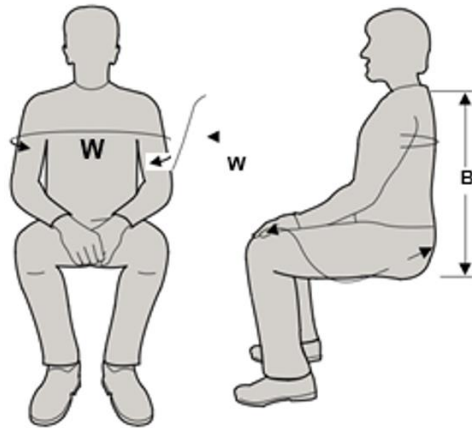
This sling offers great comfort and versatility whilst providing the patient with a degree of dignity whilst being manoeuvred.

The Deluxe Hammock Sling is available in different materials, each providing a number of different benefits to the user.



Designed to be easier to remove once the patient is in a chair and the split legs helps with patient dignity whilst being manoeuvred.

Patient Measuring



W: Humorous bone – outer most post (left to right)



B: Coccyx to base of neck



Sling Sizes

Sling sizes are identified through the colour of the ribbon edging. The colour and size is identified below.

Size	Col	Sling Width	User Width Range		Sling Back	User Back Range	
			(Minimum)	(Maximum)		(Minimum)	(Maximum)
Small	Blue	720	458	532	620	570	670
Medium	Red	820	521	606	665	615	715
Large	Yellow	840	534	621	780	730	830

Material Types

The various materials provide various benefits to the patient, the material options are:

- Polyester Solid (Grey)
- Polyester Mesh (Grey)
- Parasilk (Aquamarine Blue)
- Supersoft Spacer (Black)
- Single Use Material
- Patient Specific Material

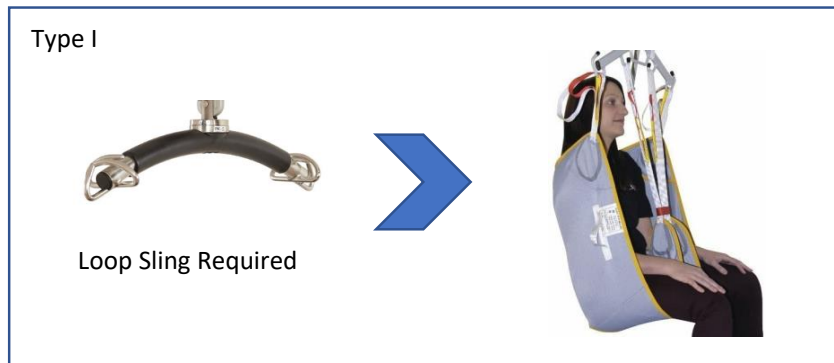
Material specifications and benefits are summarised below:

Material	Benefits
Polyester Solid (Grey)	<p>The material is quick to dry and is able to be submerged in water along with being extremely tough, lightweight and flexible, reducing shock while loading.</p> <p>The high-quality polyester webbing material allows for these slings to be used time and time again, giving you outstanding value for money.</p>
Polyester Mesh (Grey)	<p>The mesh version of the polyester material adds an additional benefit of assisting in body temperature regulation and provides some breathability. As with the solid polyester material is quick to dry and is able to be submerged in water along with being extremely tough, lightweight and flexible, reducing shock while loading.</p> <p>The high-quality polyester webbing material allows for these slings to be used time and time again, giving you outstanding value for money.</p>
Parasilk (Aquamarine Blue)	<p>Parasilk fabric is a fine and soft material, allowing the sling to slide smoothly under the patient. This soft fabric also prevents pressure areas, making it suitable for patients with sensitive skin conditions.</p>
Supersoft Spacer (Black)	<p>A “supersoft” breathable, stretch capable fabric, which is also padded for comfort during longer periods of transfer and reducing the risk of skin conditions.</p>
Single Use Material	<p>An economical, disposable, single patient use material. Cannot be laundered. Can be used multiple times by the same patient but once the material becomes soiled then it requires disposal. It saves on the laundering process of the sling. This disposable material is ideal for short term use and assist in infection control.</p>
Patient Specific Material	<p>An economical material that can be washed up to 20 times. This is a white sanforised, cotton that can be laundered at 85°C. This semi disposable material can assist in a medium term use and assist in infection control.</p>

Carry Bar Attachment

The sling attaches to a hoist through the use of a carry bar. There are two types of connectors – hook and clip. Slings need to be manufactured to the correct specification to meet the need of the carry bar.

Refer to 'The General User Safety Guide: Patient Slings' for instructions how to safely and correctly attach the sling to the carry bar.



Sling Fitting

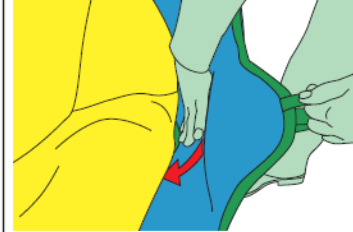
- 1** Ensure that the guiding handles and identification label are on the outside.



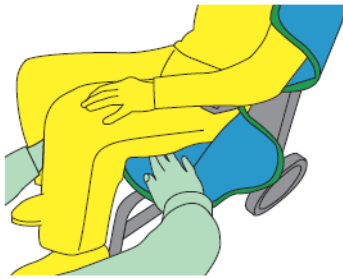
- 2** Place the sling down the back of the client using the rear pocket. Ensure the aperture is tucked under the client's coccyx.



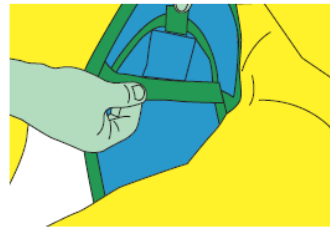
- 3** Straighten the leg section and push the side of the aperture underneath the client's hip. Repeat on the opposite side. The long outer leg loops should be pulled so they are positioned mid-thigh.



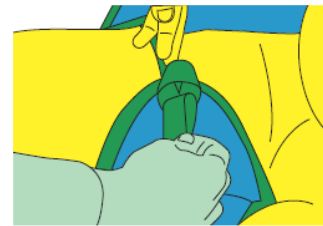
- 4** Carefully feed the leg of the sling underneath pushing the sling section down into the seating surface to avoid friction and shear against the clients legs. Repeat the procedure on the other leg.



- 5** Ensure that the sling is not twisted or creased under the thighs and check both leg straps are equal in length. Feed the right leg through the loop on the back of the opposite leg.



- 6** Feed the short inner leg loop on the left hand leg through the small dignity loop on the right hand leg.



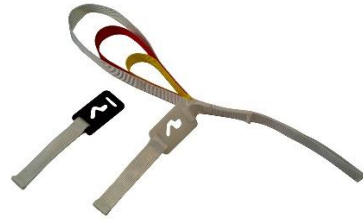
- 7** Feed the long outer leg strap on the left leg through the short inner loop of the left leg and the right leg long strap through the short loop of the right leg. Attach the leg straps to the spreader bar then the shoulder straps.



Sling Checks



Sling Loops – Check the condition and integrity (if relevant)



Sling Clips – Check the condition and integrity (if relevant)



Clips – Check the condition and integrity



Fabric and Seams – Check the condition and integrity

Equipment safety checks for slings prior to each use, need to ensure that:

- The sling is the correct size and type for the patient and is fit for purpose
- The sling and hoist are compatible
- All labels are legible and show the SWL (safe working load) and unique identifier and size
- There are no signs of fraying, tears or deterioration
- All fabric and stitching is present and intact
- The Velcro (if applicable) is clean and free of fibres/fluff etc.
- The loops/clips have no obvious signs of damage/fraying etc.
- It has been cleaned.

Do not use the sling if it fails any of these checks.

If the sling appears damaged during the lift return the patient to a surface as soon as possible.

If the sling is not safe to use, please follow instructions provided in 'The General User Safety Guide: Patient Slings'.

Further Information

More information can be found in 'The General User Safety Guide: Patient Slings'