

Invoice to:  
Name:  
Street:  
Town: Postal code:  
E-Mail:  
Tel: Fax:

Deliver to:  
Name:  
Street:  
Town: Postal code:  
E-Mail:  
Tel: Fax:

Order date:  
Purchase order:  
Number required:

Marked for:  
Sunrise order no:

**Jay® J3 Cushion Standard Features**  
 Unique Optiwell technology to maximise stability & pressure redistribution  
 Fluid pad (standard factory filled or field variable) or Air (single or dual valve) insert to optimise immersion & accommodate positioning needs  
 Modifications and positioning accessories available  
 Std or deep flat foam base. Microclimatic cover with foam comfort layer  
 2 Year guarantee. 6 months on cover

**E-mail:** orders@sunmed.co.uk

**Fax:** 0845 605 66 89

**Max. user weight:**

**150kg (cushion width 30 to 50cm)**

**227kg (cushion width: 56 to 60cm)**



## HOW TO ORDER

To order a J3 Cushion, a J3 SMART Part Number must be built. Follow the steps below to build your own unique Smart Part #.

Start	STEP 1	STEP 2	STEP 3	STEP 4	STEP 5
JAY J3 Cushion	Contour	Size	PLA (Well Size)	Insert	Cover
<b>J3C</b>	<b>S</b>	<b>4040</b>	<b>B</b>	<b>FF</b>	<b>M</b>
J3 Cushion	Standard Contour	40 x 40cm	B wells size	Factory Filled Fluid Insert	Micro climatic cover

## STEP 1 - CUSHION HEIGHT

CUSHION HEIGHT	Select	Part #	Base Price	30-48cm	50-60cm	Selected Components
Standard (9.1cm unloaded state with cover)	<input type="checkbox"/>	S	£715	£825		
Deep (10.5cm unloaded state with cover)	<input type="checkbox"/>	D	£770	£875		

S or D

**Note: Deep height not available in 30x30, 30x35 or 35x30cm sizes**  
 Deep height designed for maximum immersion/envelopment for a higher risk user with decreased tissue mass

## STEP 2 - CUSHION SIZE

CUSHION WIDTH AND DEPTH	Part #	Selected Components
Standard Cushion (width: 30 - 50cm)	Select	
Bariatric Cushion (width: 56 - 60cm)	in matrix	

Width x Depth (cm)

		Width										
		30	35	38	40	42	44	46	48	50	56	60
Depth	30	△	△									
	35	△	○									
	38		○	○	○	○	○					
	40		○	○	○	○	○					
	42			○	○	○	○	○				
	44			○	○	○	○	○	○			
	46		○		○	○	○	○	○	○	○	○
	48				○	○	○	○	○	○	○	○
	50					○	○	○	○	○	○	○
	56										○	○
60										○	○	
Standard PLA		A			B (can be reduced to PLA A)				C (can be reduced to PLA A & B)			

- △ Only available in standard height
- Available in Standard and Deep height
- ▨ Available on an extended lead-time, subject to clinical evaluation
- ▩ Not available



Note: measure depth from front of seat notch to front top side of cushion.  
 All measurements are including the cover

### STEP 3 - PELVIC LOADING AREA SIZE (WELL SIZE)

Experience has indicated that the PLA (well) size that is standard on the cushion is appropriate for the majority of users. There is an option to reduce the PLA size via PLA reducer rings if this is clinically appropriate to optimise immersion, lateral stability and prevent bottoming out.

#### PELVIC LOADING AREA (PLA) SIZE

- A - Small (Standard with 30 - 38cm width\*)
- B - Medium (Standard with 40 - 48cm width\*)
- C - Large (Standard with 50 - 60cm width\*)

- |                          |               |
|--------------------------|---------------|
| <b>Select</b>            | <b>Part #</b> |
| <input type="checkbox"/> | A             |
| <input type="checkbox"/> | B             |
| <input type="checkbox"/> | C             |

#### Selected Components

A, B or C

There is an option to reduce the PLA size via PLA reducer rings if this is clinically appropriate to optimize immersion, lateral stability and prevent bottoming out

\*Unless another size is requested B and C PLA sizes are not available on 30 - 38cm wide cushions. / C PLA size are not available on 30 - 48cm wide cushions

### STEP 4 - PELVIC LOADING AREA SIZE (WELL SIZE)

#### PELVIC LOADING AREA (PLA) INSERT

- FLUID - Factory Filled Fluid Pad Option
- FLUID - Field Variable Fluid Pad Option\*

- |                          |               |
|--------------------------|---------------|
| <b>Select</b>            | <b>Part #</b> |
| <input type="checkbox"/> | FF            |
| <input type="checkbox"/> | FV            |
| <input type="checkbox"/> | AS            |
| <input type="checkbox"/> | AD            |

#### Price

£0  
£25

#### Selected Components

FF, FV, AS, AD

- AIR Insert Option - Single Valve\*\*\*
- AIR Insert Pad Option - Dual Valve\*\*\*

£40  
£40



Factory Fluid - FF



Field Variable - FV



Air single valve - AS



Air dual valve - AD

FV	Fluid Supplement Pads Size
FV Size A	2x Medium - J3CFSPM
FV Size B	2x Large - J3CFSPPL
FV Size C	2x X-Large - J3CFSPXL

\*Field Variable Insert comes standard with two 3D fluid supplement pads for adjustment or assessment purposes and can accommodate two additional pads, available in: Small, Medium; Large, X-Large \*\*Air Bladder Options ship with instructions, air pump, patch kit and nozzle fittings \*\*\* N/A with Deep Contour cushion

### STEP 5 - COVER OPTION

- |                          |               |
|--------------------------|---------------|
| <b>Select</b>            | <b>Part #</b> |
| <input type="checkbox"/> | I             |
| <input type="checkbox"/> | M             |

- Incontinent Cover
- Microclimatic Cover

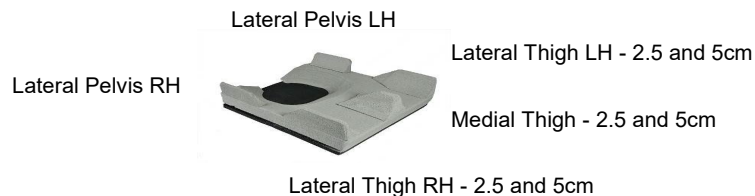
#### Components

I OR M

### POSITIONING OPTIONS

	Short (Width 30 - 38cm)	Medium (Width 40 - 48cm)	Long (width 50 - 60cm)	Price
Lateral Thigh 2.5cm (1") (Left & Right)	<input type="checkbox"/> J3CALS1	<input type="checkbox"/> J3CALM1	<input type="checkbox"/> J3CALL1	£60
Lateral Thigh 5cm (2") (Left & Right)	<input type="checkbox"/> J3CALS2	<input type="checkbox"/> J3CALM2	<input type="checkbox"/> J3CALL2	£65
Medial Thigh 2.5cm (1") (each)	<input type="checkbox"/> J3CAMS1	<input type="checkbox"/> J3CAMP1	<input type="checkbox"/> J3CAML1	£55
Medial Thigh 5cm (2") (each)	<input type="checkbox"/> J3CAMS2	<input type="checkbox"/> J3CAMP2	<input type="checkbox"/> J3CAML2	£60
Lateral Pelvic 5cm (2") (Left & Right)	<input type="checkbox"/> J3CAPS2	<input type="checkbox"/> J3CAPM2		£75

	PLA A	PLA B	PLA C	Price
Obliquity Pad Left - Standard base	<input type="checkbox"/> J3CSAOL	<input type="checkbox"/> J3CSBOL	<input type="checkbox"/> J3CSCOL	£40
Obliquity Pad Right - Standard base	<input type="checkbox"/> J3CSAOR	<input type="checkbox"/> J3CSBOR	<input type="checkbox"/> J3CSCOR	£40
Obliquity Pad Left - Deep base	<input type="checkbox"/> J3CDAOL	<input type="checkbox"/> J3CDBOL	<input type="checkbox"/> J3CDCOL	£40
Obliquity Pad Right - Deep base	<input type="checkbox"/> J3CDAOR	<input type="checkbox"/> J3CDBOR	<input type="checkbox"/> J3CDCOR	£40



### J3 PART NUMBER

J3C					
	STEP 1	STEP 2	STEP 3	STEP 4	STEP 5

<b>JAY J3 Cushion Price</b>	£
Option Price	£
VAT	£
<b>Total Price</b>	£

SPARE PARTS					
<b>PLA Reducer - Standard base</b>		<b>£</b>			
<input type="checkbox"/>	J3CPLARSCB PLA reducer Std C -> B	25.00			
<input type="checkbox"/>	J3CPLARSCA PLA reducer Std C -> A	25.00			
<input type="checkbox"/>	J3CPLARSBA PLA reducer Std B -> A	25.00			
<b>PLA Reducer - Deep base</b>		<b>£</b>			
<input type="checkbox"/>	J3CPLARDCB PLA reducer Deep C -> B	25.00			
<input type="checkbox"/>	J3CPLARDCA PLA reducer Deep C -> A	25.00			
<input type="checkbox"/>	J3CPLARDBA PLA reducer Deep B -> A	25.00			
<b>Evaluation (Fluid &amp; Air) &amp; Positioning Kits</b>		<b>£</b>			
<input type="checkbox"/>	J3CEKSAEU Standard PLA evaluation kit	730.00			
<input type="checkbox"/>	J3CEKDAEU Deep PLA evaluation kit	730.00			
<input type="checkbox"/>	J3CPEKEU Positioning kit	730.00			
<b>Fluid &amp; Air inserts</b>					
<b>PLA A</b>		<b>£</b>	<b>PLA B</b>		<b>£</b>
<input type="checkbox"/>	J3CSAFFEU FF Fluid Std	370.00	<input type="checkbox"/>	J3CSBFFEUE FF Fluid Std	370.00
<input type="checkbox"/>	J3CSAFVEU FV Fluid Std	370.00	<input type="checkbox"/>	J3CSBFVEUE FV Fluid Std	370.00
<input type="checkbox"/>	J3CDAFFEUE FF Fluid Deep	420.00	<input type="checkbox"/>	J3CDBFFEUE FF Fluid Deep	420.00
<input type="checkbox"/>	J3CDAFVEUE FV Fluid Deep	420.00	<input type="checkbox"/>	J3CDBFVEUE FV Fluid Deep	420.00
<input type="checkbox"/>	J3CSAASEU AS Air Std	460.00	<input type="checkbox"/>	J3CSBASEU AS Air Std	460.00
<input type="checkbox"/>	J3CSAADEU AD Air Std	460.00	<input type="checkbox"/>	J3CSBADEU AD Air Std	460.00
<input type="checkbox"/>	J3CSCFFEU FF Fluid Std	370.00	<input type="checkbox"/>	J3CSCFVEUE FV Fluid Std	370.00
<input type="checkbox"/>	J3CSCDFEU FF Fluid Deep	420.00	<input type="checkbox"/>	J3CSCDFVEUE FV Fluid Deep	420.00
<input type="checkbox"/>	J3CSCASEU AS Air Std	460.00	<input type="checkbox"/>	J3CSCADEU AD Air Std	460.00
<b>J3 POSITIONING KIT - J3CPEKEU</b>					
		<b>Short (width 30 - 38cm)</b>	<b>Medium (width 40 - 48cm)</b>	<b>Long (width 50 - 60cm)</b>	
Lateral Thigh Left 2.5cm (1") (Left & Right)			1x J3CALM1	1x J3CALL1	
Lateral Thigh Left 5cm (2") (Left & Right)		1x J3CALS2	1x J3CALM2	1x J3CALL2	
Medial Thigh 2.5cm (1") (each)			1x J3Camm1	1x J3CAML1	
Medial Thigh 5cm (2") (each)		1x J3CAMS2	1x J3Camm2	1x J3CAML2	
Lateral Pelvic 5cm (2") (Left & Right)		1x J3CAPS2	1x J3CAPM2		
			<b>PLA B</b>	<b>PLA C</b>	
Obliquity Pad Left - Standard base (each)			1x J3CSBOL	1x J3CSCOL	
Obliquity Pad Right - Standard base (each)			1x J3CSBOR	1x J3CSCOR	
Obliquity Pad Left - Deep base (each)			1x J3CDBOL	1x J3CDCOL	
Obliquity Pad Right - Deep base (each)			1x J3CDBOR	1x J3CDCOR	
Replacement tape roll		1x J3CPRT			
<b>J3C FLUID STANDARD EVALUATION KIT - J3CEKSAEU</b>					
		<b>Qty</b>	<b>Part Nr.</b>	<b>Qty</b>	<b>Part Nr.</b>
Field Variable Fluid Pad Option (PLA B & PLA C)		1x	J3CSBFVEUE	1x	J3CSCFVEUE
AIR Fluid Pad Option - Single Valve (PLA B & PLA C)		1x	J3CSBASEU	1x	J3CSCASEU
AIR Fluid Pad Option - Dual Valve (PLA B & PLA C)		1x	J3CSBADEU	1x	J3CSCADEU
PLA reducer Std C -> B		1x	J3CPLARSCB		
Fluid Supplement Pads - Small & Medium		2x	J3CFSPS	2x	J3CFSPM
Fluid Supplement Pads - Large & X-Large		2x	J3CFSPXL	2x	J3CFSPXL
Air Repair Kit		1x	J3CRK		
Air Pump		1x	J3CAP		
<b>J3C FLUID DEEP EVALUATION KIT - J3CEKDAEU</b>					
		<b>Qty</b>	<b>Part Nr.</b>	<b>Qty</b>	<b>Part Nr.</b>
Field Variable Fluid Pad Option (PLA B & PLA C)		1x	J3CDBFVEUE	1x	J3CDCFVEUE
PLA reducer Std C -> B		1x	J3CPLARDCB		
Fluid Supplement Pads - Small & Medium		2x	J3CFSPS	2x	J3CFSPM
Fluid Supplement Pads - Large & X-Large		2x	J3CFSPXL	2x	J3CFSPXL

**MODIFICATIONS - The following modifications can be ordered through Sunrise Medical customer service.**

**Translate a FV (Field Variable - blue) bladder with additional Fluid supplement pads into a FF (Factory Filled - grey) bladder**

Translating an FV bladder with additional Fluid supplement pads into a FF bladder can be achieved by ordering a modified cushion. There is the possibility to add up to 2 Fluid supplement pads on each side of the FV bladder. When the right filling has been defined, complete the item number of the cushion with the following information:- (in the final item number always use **FF**, as this is what you want to achieve **LxyRxy** (e.g. J3CS4040BFFMLxyRxy)

**L:** for left side

**x:** the letter of the first fluid supplement pad that you want to add (S, M, L or X)

**y:** the letter of the second fluid supplement pad that you want to add (S, M, L or X)

(if no fluid supplement pads are required, please add u instead of x & y)

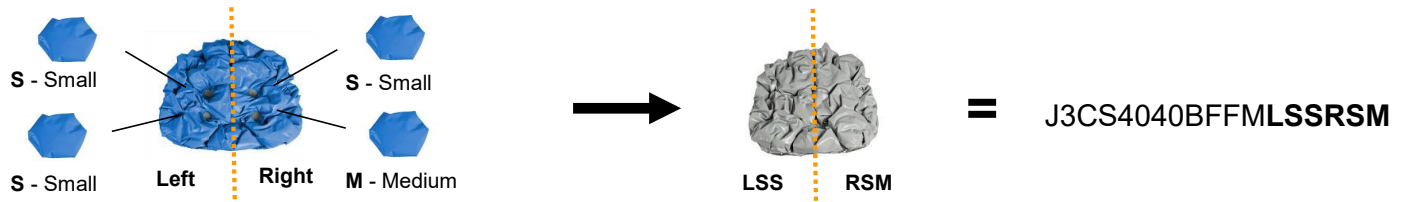
**R:** for right side

**x:** the letter of the first fluid supplement pad that you want to add (S, M, L or X)

**y:** the letter of the second fluid supplement pad that you want to add (S, M, L or X)

(if no fluid supplement pads are required, please add u instead of x & y)

**Example:** an FV with 2 S fluid supplement pads on the left and 1 S & 1 M on the right would be ordered as follows:-



**Ordering a non-standard cushion size**

Please refer to the first page of the order form where all sizes of standard and modified cushions are given.

When ordering please write the item number with the size required and add in the comment box "Modify size to (width) x (depth) cm"

**Example:** JAY J3 cushion is required in the size 38x56 (width x depth)

J3CS3856AFFM

**Comment box:** "Modify to size 38x56 cm (width x depth)"

**Ordering a larger PLA size**

Please refer to the first page of the order form where the width of the cushions and the standard PLA sizes are indicated.

If a larger PLA size is required, please verify the possibilities below and adapt the item number with the new PLA size.

And add in the comment box: "Modify PLA to (B/C)"

PLA C: can be ordered as a modification down to seat width 40cm (40 - 60cm)

PLA B: can be ordered as a modification down to seat width 35cm (35 - 48cm)

**Example:** JAY J3 cushion is required in the size 40x40 cm with a PLA C (standard PLA would be size B)

J3CS4040CFFM

**Comment box:** "Modify to PLA C"

**Additional modifications to the cushion base**

If one of the following modifications is needed, please add the comment in bold to the comment box and add the part number

**FTR - Femoral Relief**

Additional cut-away at the front of the PLA to decrease the slope angle from the PLA to the femoral support areas

**SR - Scrotal Relief**

Front and centre of PLA is scooped out to accommodate organ tissue

**TR - Trochanteric Relief**

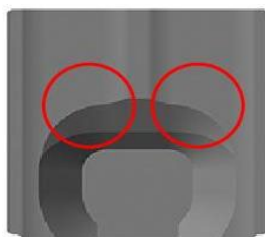
Base material is removed to create less pressure at or near the trochanters

**NR - Notch for Rails**

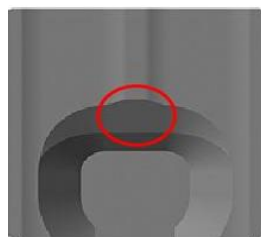
Notch foam base to lower cushion between the seat rails

**LTC - Leg Trough Cut**

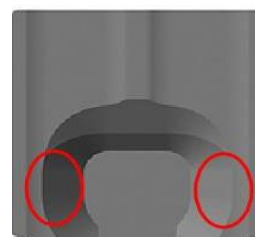
For improved positioning, use this modification to increase the depth by approx. 2.5cm of the femoral trough to support the femurs



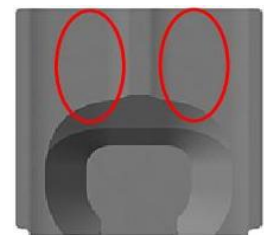
**FTR - Femoral Relief**



**SR - Scrotal Relief**



**TR - Trochanteric Relief**



**LTC - Leg Trough Cut**